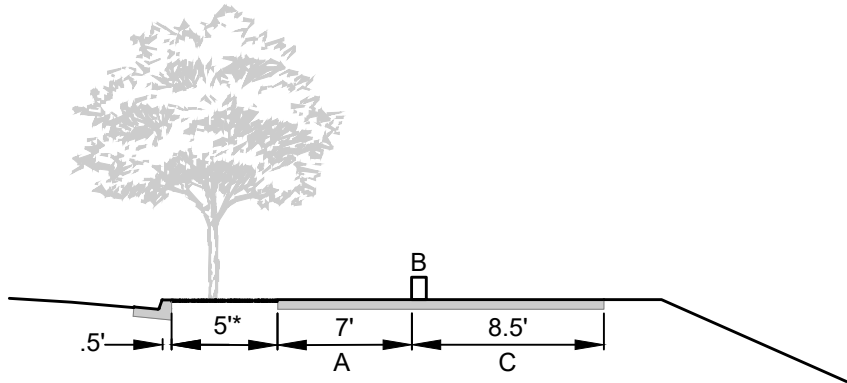


I-280 / WOLFE ROAD INTERCHANGE IMPROVEMENTS

BIKE/PED PATH TREATMENTS



WOLFE ROAD BICYCLE AND PEDESTRIAN PATH - OPTION 1
* LANDSCAPE WIDTH VARIES

A - BIKEPATH

1) ASPHALT



2) GREEN PAINTED ASPHALT



3) CONCRETE



4) DECORATIVE INLAY

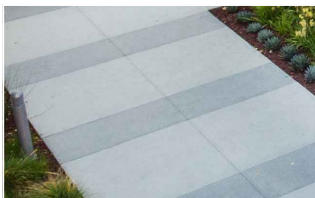


C - SIDEWALK

1) STANDARD CONCRETE



2) DECORATIVE INLAY



DIB 89: CLASS IV BIKEWAY GUIDANCE- APPLICABLE SECTIONS

3.2 SEPARATION WIDTH

- 1) GRADE SEPARATION. FOR A SEPARATED BIKEWAY ON THE SAME GRADE AS A SIDEWALK, THE SEPARATED BIKEWAY SEPARATION WIDTH SHOULD BE **1.5 FEET MINIMUM INCLUDING THE CURB WIDTH** (WHICH MAY INCLUDE LANDSCAPING), AND 3 FEET MINIMUM WITH PARKING TO ACCOUNT FOR VEHICLE DOORS. NOTE, THIS PORTION OF THE SIDEWALK CAN NO LONGER BE USED BY PEDESTRIANS.

3.3 SEPARATED BIKEWAY WIDTH

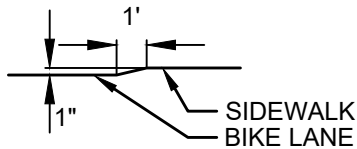
- 1) THE SEPARATED BIKEWAY CLEAR WIDTH SHOULD BE **7 FEET PREFERRED**, WITH 5 FEET BEING THE MINIMUM WIDTH FOR ONE-WAY TRAVEL WHEN ADJACENT TO A ROADWAY.

3.5 RAISED SEPARATED BIKEWAY

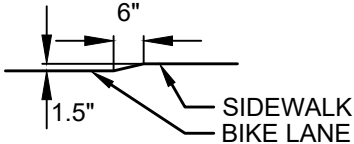
- 1) A RAISED SEPARATED BIKEWAY SHOULD BE ELEVATED 3 INCHES MINIMUM ABOVE THE FINISHED GRADE, BUT NO HIGHER THAN THE ADJACENT CURB IN ORDER TO ALLOW DRAINAGE TOWARDS THE STREET UNLESS SOME OTHER DRAINAGE DESIGN IS IMPLEMENTED.
- 2) A VERTICAL TAPERED EDGE SHOULD BE **4:1 OR FLATTER** OCCURRING IN THE MARKED BUFFER.
- 3) A SEPARATED BIKEWAY AT SIDEWALK ELEVATION SHOULD HAVE A **CONTINUOUS DETECTABLE VERTICAL ELEMENT OR CURB** SEPARATING THE BIKEWAY FROM THE SIDEWALK.

B - SEPARATION

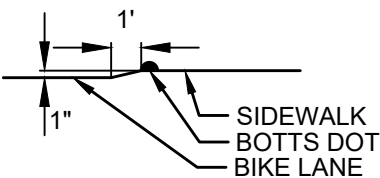
1) VERTICAL - 12:1



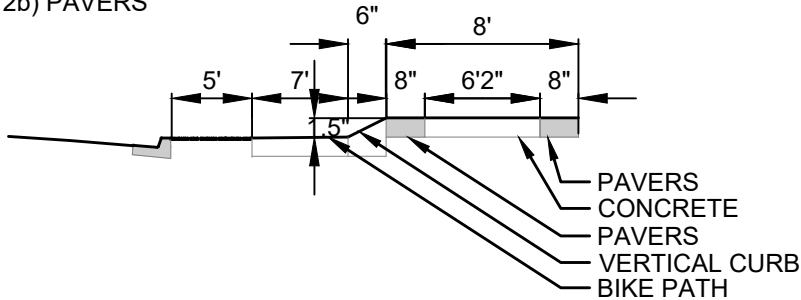
2) VERTICAL - 4:1



1b) BOTTS DOTS

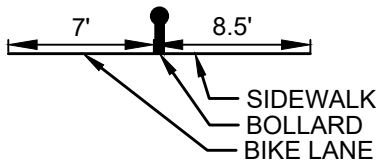


2b) PAVERS

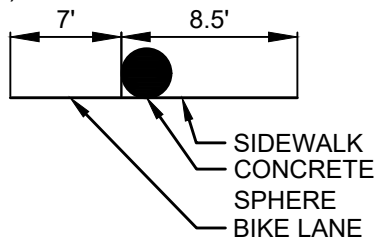


3) CONTINUOUS SEPARATION

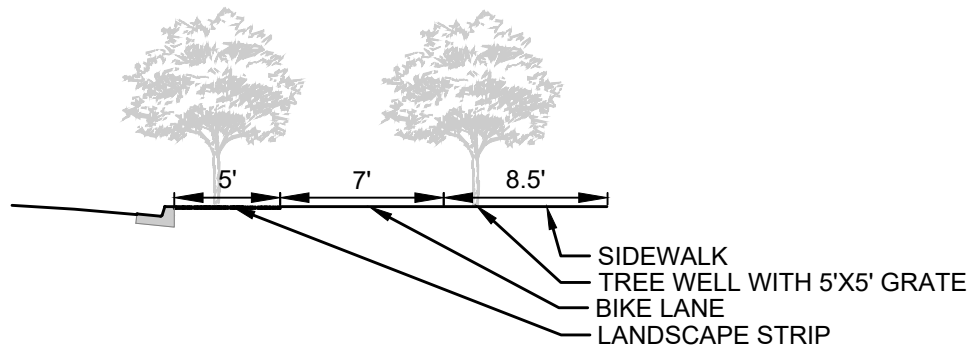
3a) BOLLARDS



3b) CONCRETE SPHERES



3c) TREE WELLS



NOTE: PEDESTRIAN LEVEL LIGHTING WILL BE PROVIDED SO THAT CONTINUOUS SEPARATION ELEMENTS ARE VISIBLE AT NIGHT.