

ENFORCED SAFETY REGULATIONS

FOR WILDLAND URBAN INTERFACE (WUI) ZONES:

HIGH OR MODERATE FIRE HAZARD SEVERITY WUI ZONES:

Cupertino, Los Altos Hills, Los Gatos, Monte Sereno, Saratoga and unincorporated County areas

- 🔥 Create **30 feet** of defensible space around your home. To accomplish this, you must clear all flammable vegetation a **minimum of 30 feet** around structures.
- 🔥 Clear dead leaves and branches from shrubs and trees.
- 🔥 Remove pine needles and leaves from roof, eaves and rain gutters.
- 🔥 Trim tree limbs 10 ft. from chimneys or stovepipes and remove dead limbs that hang over rooftops.
- 🔥 Cover chimney outlets or flues with a 1/2" mesh spark arrestor.
- 🔥 Ensure address numbers are at least 4" tall and clearly visible from street. For homes located more than 50 feet from street, post address numbers at the driveway entrance.

IN ADDITION, VERY HIGH FIRE HAZARD SEVERITY WUI ZONES MUST:

Cupertino, Los Gatos, Monte Sereno, Saratoga and all unincorporated County areas in State Responsibility Areas

- 🔥 Create **100 feet** of defensible space around your home. To accomplish this, create a Green Zone by clearing all flammable vegetation **30 feet** around structures and create a reduced fuel zone for the remaining **70 feet** or to your property line.

FAMILY COMMUNICATION PLAN

Complete this form and place it where it is accessible by every household member. Keep duplicate copies of this information in your vehicles and emergency supply kits.

IN CASE OF EVACUATION, WE WILL MEET AT:

OUT-OF-AREA EMERGENCY CONTACT:

Name: _____ Relationship: _____

Cell Phone: _____ Home Phone: _____

Email: _____

www.sccfd.org/rsg

Learn more about
Ready, Set, Go:
www.sccfd.org/rsg

Contact Us:

Register for AlertSCC
Emergency Notifications at
www.alertscc.com

Email us at
info@sccfd.org

For non-emergencies,
call (408) 378-4010



FOR EMERGENCIES, CALL 911

SANTA CLARA COUNTY FIRE DEPARTMENT



A California Fire Protection District serving Santa Clara County and the communities of Campbell, Cupertino, Los Altos, Los Altos Hills, Los Gatos, Monte Sereno and Saratoga.

BE READY for a wildfire with...



READY, SET, GO.



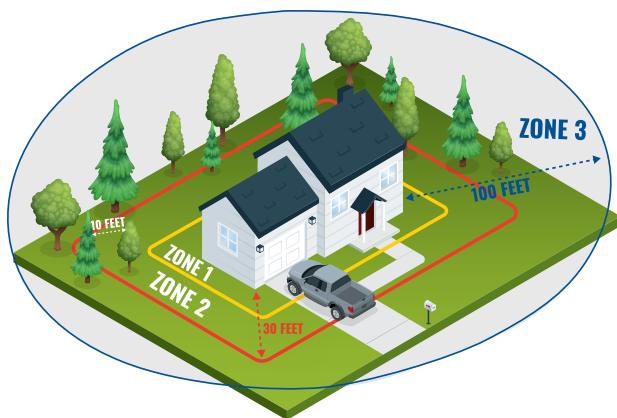
www.sccfd.org/rsg

READY

Being ready for wildfires starts with maintaining a good defensible space and hardening your home to fire risks. **READY, SET, GO** is a national campaign to help property owners like you prepare for threats of wildfires.

THREE-ZONE DEFENSIBLE SPACE

Create a three-zone defensible space by removing dead plants, grass and weeds from your property.



Zone 1 extends 0-5 feet out: Remove all plants and vegetation, especially those touching your home.

Zone 2 extends 30 feet out: Remove all dead vegetation from your yard and keep branches at least 10 feet away from your home.

Zone 3 extends 100 feet out: Keep at least 10-feet of spacing between shrubs and trees.

HARDEN YOUR HOME

Flying embers can destroy homes up to a mile away from a wildfire. Harden your home by using ember-resistant materials.

- Roof:** Build your roof or re-roof with materials such as composition, metal or tile.
- Windows:** Install dual-paned windows with tempered glass to reduce the chance of breakage in a fire.
- Deck:** Use ignition-resistant and non-combustible materials, and ensure all combustible items are removed from underneath your deck.

SET

Before wildfire strikes, it is important that you prepare yourself and your family for the possibility of having to evacuate.

WILDFIRE ACTION PLAN

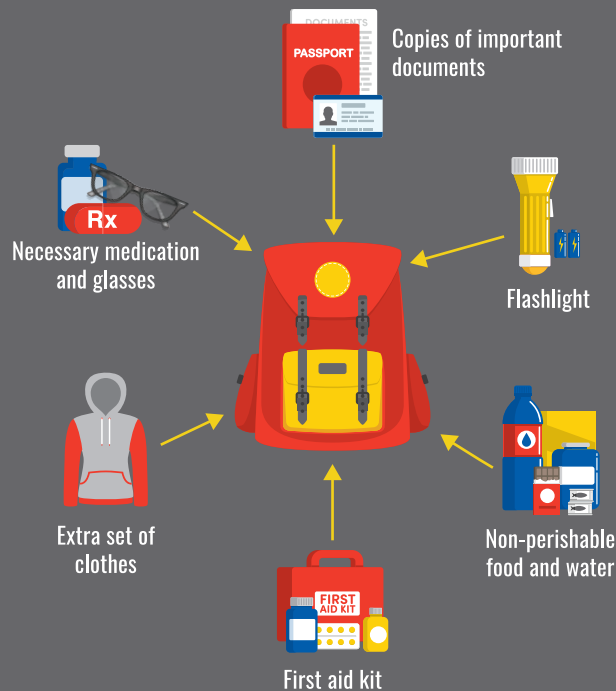
Wildfire action plans include several elements that define how to get out of dangerous areas, where you and your family will meet if separated, and how you will stay in contact.

Simple plans should include:

- ▶ Designating an emergency meeting location outside of fire or hazard areas.
- ▶ Identifying several different escape routes from your home and community.
- ▶ Developing a family communications plan that designates an out-of-area friend or relative as a single point of contact.

EMERGENCY KIT

Prepare an emergency kit to grab and go when needed. Below are essential items that should be in your kit.



GO

Be ready and act early. Take the evacuation steps necessary to give your household the best chance of surviving a wildfire or disaster. Stay informed and leave early to avoid being caught in fire, smoke or road congestion. Don't wait to be ordered by authorities to leave.

STAY IN CONTACT



If you evacuate, notify your out-of-area contact to give them a status update. Let them know what route you're taking and where you are planning to go. Provide updates as routes and plans change.

IF YOU ARE TRAPPED...

- Stay calm and keep your family together.
- Call 911 to let them know where you are and what your situation is.
- If you're at home, stay inside, keep doors and windows closed and unlocked.
- If you're in a vehicle, park it in an area clear of vegetation.
- If smoke is around you, stay as close to the ground as possible and cover your face with a mask, bandana or breathable clothing.

