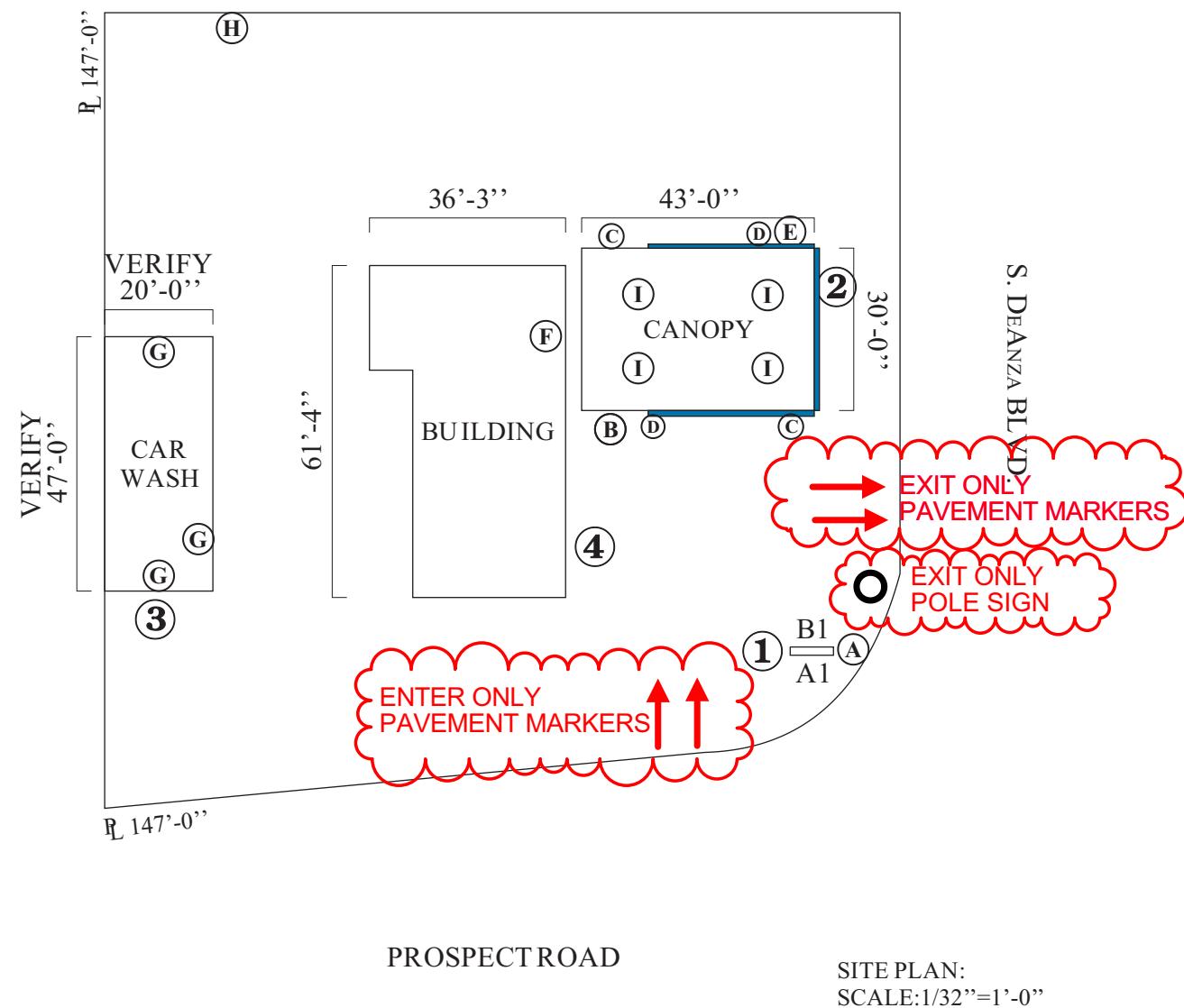


ALL ILLEGAL WINDOW SIGNAGE,
WALL SIGNAGE, AND FREESTANDING
SIGNAGE WILL BE REMOVED PROIR
TO SIGNAGE FINAL.



DESCRIPTION OF EXISTINGSIGNS:		EXISTING SITE	
TYPE	SIGN COPY	DIMENSIONS	AREA
(A) Monument Sign (Existing to remain)	Price/ID	8'- 5 1/2" x 5'- 11"	50.04 Sq.Ft.
(B) Illuminated Canopy Sign (Existing)	Valero	7'-4 1/2" x 1'-9"	12.90 Sq.Ft.
(C) Illuminated Canopy Sign (Removed)	V Logo	1'- 10 1/2" x 2'- 3 3/16"	4.25 Sq.Ft.
(D) Illuminated Canopy Sign (Removed)	Valero/Gesture	20'-2" x 1'-5"	28.50 Sq.Ft.
(E) Illuminated Canopy Sign (Existing)	Valero	7'-4 1/2" x 1'-9"	12.90 Sq.Ft.
(F) Building Sign (To remian)	Food Shop	15'-9" x 1'-6"	14.00 Sq.Ft.
(G) Building Sign (Signs removed)	Car Wash x 3ea	9'-0" x 1'-6"	40.50 Sq.Ft.
(H) Monument Sign (To remove)	Car Wash	8'-0" x 4'-0"	32.00 Sq.Ft.
(I) Pump topper	Pump topper x 4ea	1' 0" x 1'-8"	1.60 Sq.Ft.

DESCRIPTION OF PROPOSED SIGNS:			
TYPE	SIGN COPY	DIMENSIONS	AREA
① Monument Sign (Reface existing)	Price/ID	8'- 5 1/2" x 5'- 11"	50.04 Sq.Ft.
② Illuminated Canopy Sign (Proposed)	V Logo	2'-2 1/8" x 1'-9"	3.25 Sq.Ft.
③ Building Sign (Non-Illuminated)	Car Wash	9'-0" x 1'-6"	13.50 Sq.Ft.
④ Building Sign (Illuminated)	Smog Shop	9'-10" x 1'-6"	14.75 Sq.Ft.
⑤ Pump topper	Pump topper x 4ea	1' 0" x 1'-8"	1.60 Sq.Ft.
■ Canopy Eyebrow Bar	Eyebrow x 2ea	27'-11" x 2.5"	11.62 Sq.Ft.
■ Canopy Eyebrow Bar	Eyebrow	19'-8" x 2.5"	4.09 Sq.Ft.



PROPRIETARY INFORMATION. The information disclosed in this document, including all drawings, designs and related materials, is the valuable and proprietary information of Sign Development Inc. It is provided solely for the purpose of evaluation for purchase and, without the express written authorization of Sign Development Inc., may not be disclosed or duplicated, in whole or in part, for any reason. Sign Development Inc. expressly reserves all patent, copyright and other proprietary rights to this document, including all design, manufacturing, reproduction, use, and sales rights thereto. © 2011 SIGN DEVELOPMENT INC.

CUSTOMER APPROVAL

SIGN AND PRINT FULL NAME _____ DATE _____

NO. U7180 PAGE: 1 OF 8
DATE: 02.22.19SM
REV: 03.13.19BA 06.24.19GO 06.27.19GO
07.01.19GO 07.12.19GO 11.13.19GO

Valero 1699 DeAnza Blvd.
Cupertino, CA 95014

SIDE A1

8'- 5 1/2"

5'- 11"



1699

6" ABLE
LEDs

PAINT CABINETS AND RETAINERS
VALERO LIGHT GRAY

NO TOUCH
NATURAL BRICK

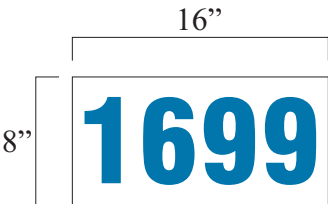
① PROPOSED REFACE EXISTING D/F PRICE ID SIGN
50.04 sq.ft.

SCALE: 1/2"=1'-0"

PER CITY REQUIREMENT -
A SITE LIGHTING STUDY WILL
NEED TO BE CONDUCTED FOR
THE NEW INTERNALLY ILLUMINATED
FUEL PRICE ID SIGN TO VERIFY
IT DOES NOT EXCEED 250 FOOT LABERT



EXISTING D/F PRICE/ID SIGN
50.04 SQ.FT.



SCALE: 1"=1'-0"

INSTALL NEW NON-ILLUMINATED
ALUMINUM ADDRESS PANEL

SIDE B1

8'- 5 1/2"

5'- 11"



6" ABLE
LEDs

ALL ILLEGAL WINDOW SIGNAGE,
WALL SIGNAGE, AND FREESTANDING
SIGNAGE WILL BE REMOVED PROIR
TO SIGNAGE FINAL.



Sign Development Inc.

License #576277

Upland, CA 91786 (909) 920-5535

PROPRIETARY INFORMATION. The information disclosed in this document, including all drawings, designs and related materials, is the valuable and proprietary information of Sign Development Inc. It is provided solely for the purpose of evaluation for purchase and, without the express written authorization of Sign Development Inc., may not be disclosed or duplicated, in whole or in part, for any reason. Sign Development Inc. expressly reserves all patent, copyright and other proprietary rights to this document, including all design, manufacturing, reproduction, use, and sales rights thereto. © 2011 SIGN DEVELOPMENT INC.

CUSTOMER APPROVAL

SIGN AND PRINT FULL NAME

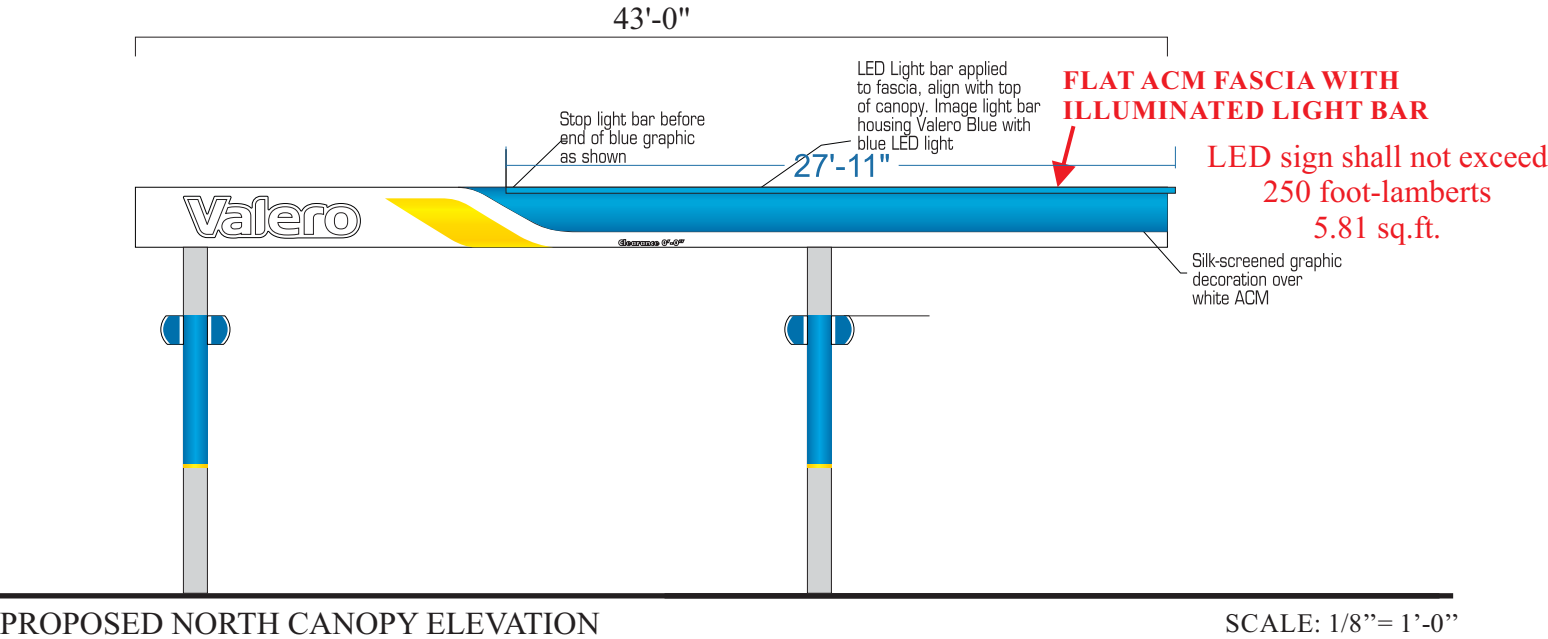
DATE

NO. U7180 PAGE: 2 OF 8

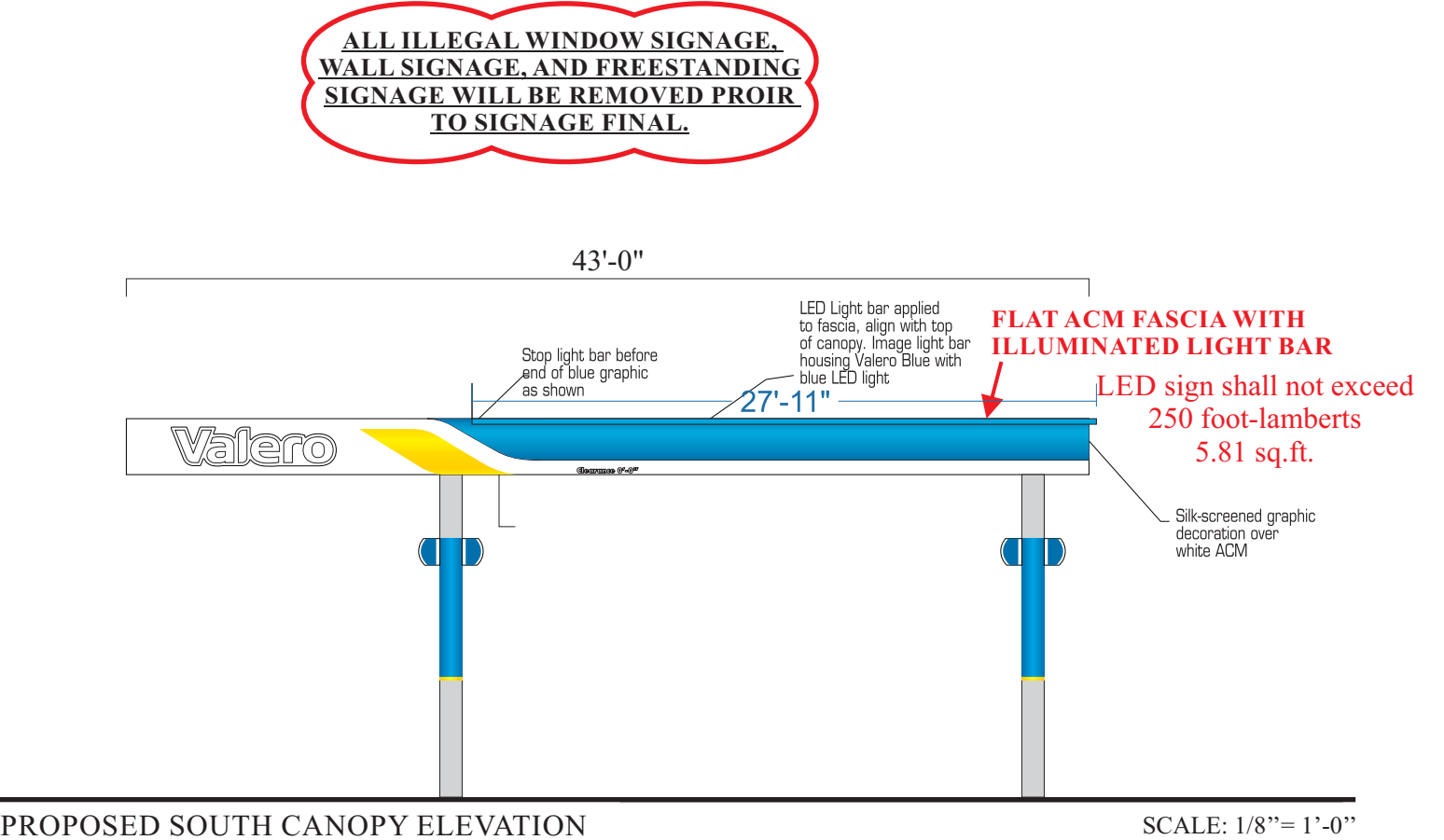
DATE: 02.20.19SM

REV: 03.13.19BA 06.24.19GO 06.27.19GO
07.01.19GO 07.12.19GO 11.13.19GO

Valero 1699 DeANZA BLVD.
CUPERTINO, CA 95014



EXISTING SOUTH CANOPY ELEVATION



EXISTING NORTH CANOPY ELEVATION



Sign Development Inc.

License #576277

Upland, CA 91786 (909) 920-5535

PROPRIETARY INFORMATION. The information disclosed in this document, including all drawings, designs and related materials, is the valuable and proprietary information of Sign Development Inc. It is provided solely for the purpose of evaluation for purchase and, without the express written authorization of Sign Development Inc., may not be disclosed or duplicated, in whole or in part, for any reason. Sign Development Inc. expressly reserves all patent, copyright and other proprietary rights to this document, including all design, manufacturing, reproduction, use, and sales rights thereto. © 2011 SIGN DEVELOPMENT INC.

CUSTOMER APPROVAL

SIGN AND PRINT FULL NAME

DATE

NO. U7180

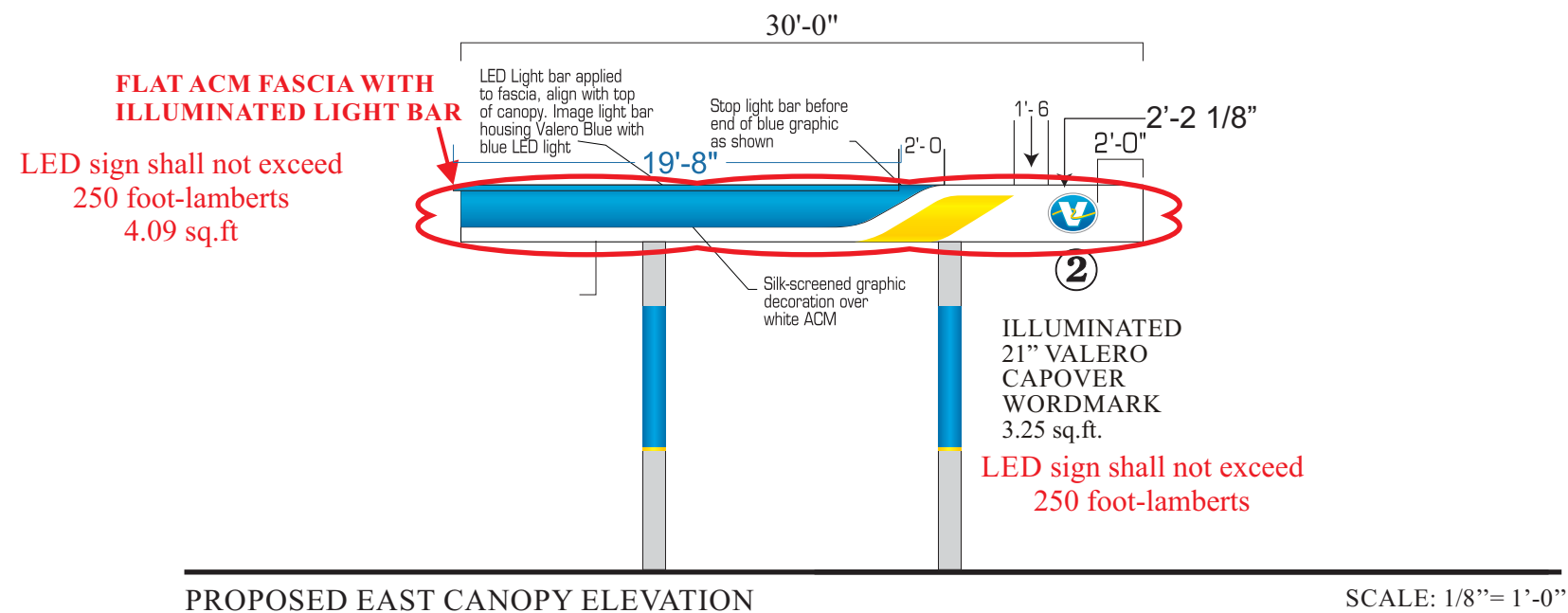
PAGE: 3 OF 8

DATE: 02.20.19SM

**REV: 03.13.19BA 06.24.19GO 06.27.19GO
07.01.19GO 07.12.19GO 11.13.19GO**

Valero

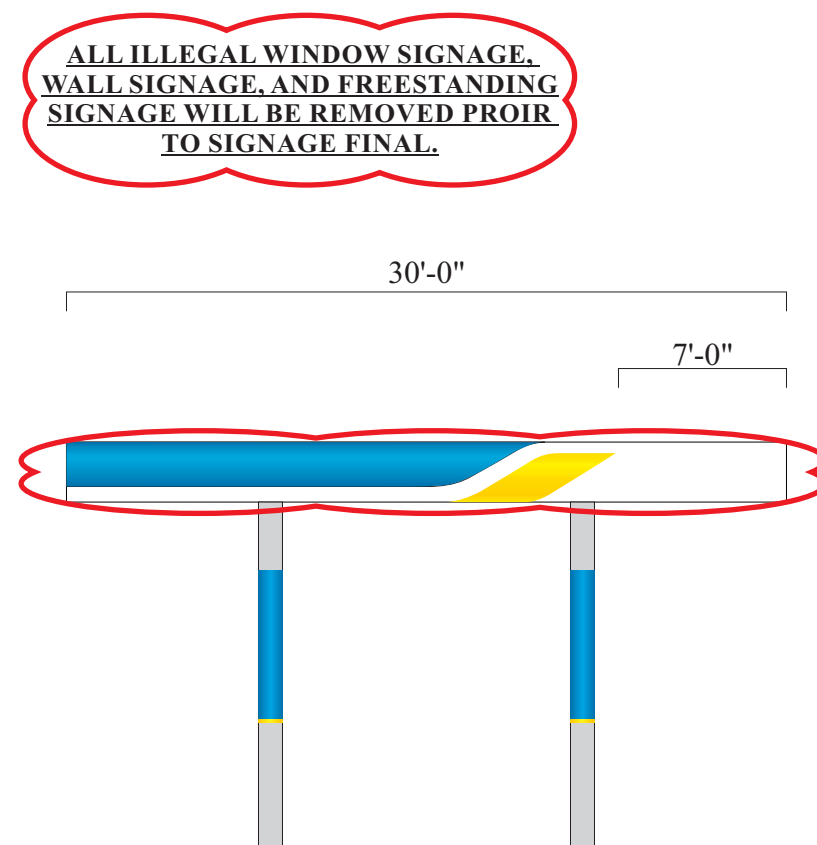
**1699 DeANZA BLVD.
CUPERTINO, CA 95014**



LOGO TO BE ILLUMINATED
(Currently unilluminated)



EXISTING EAST CANOPY ELEVATION



EXISTING WEST CANOPY ELEVATION



Sign Development Inc.

License #576277

Upland, CA 91786 (909) 920-5535

PROPRIETARY INFORMATION. The information disclosed in this document, including all drawings, designs and related materials, is the valuable and proprietary information of Sign Development Inc. It is provided solely for the purpose of evaluation for purchase and, without the express written authorization of Sign Development Inc., may not be disclosed or duplicated, in whole or in part, for any reason. Sign Development Inc. expressly reserves all patent, copyright and other proprietary rights to this document, including all design, manufacturing, reproduction, use, and sales rights thereto. © 2011 SIGN DEVELOPMENT INC.

CUSTOMER APPROVAL

SIGN AND PRINT FULL NAME

DATE

NO. U7180

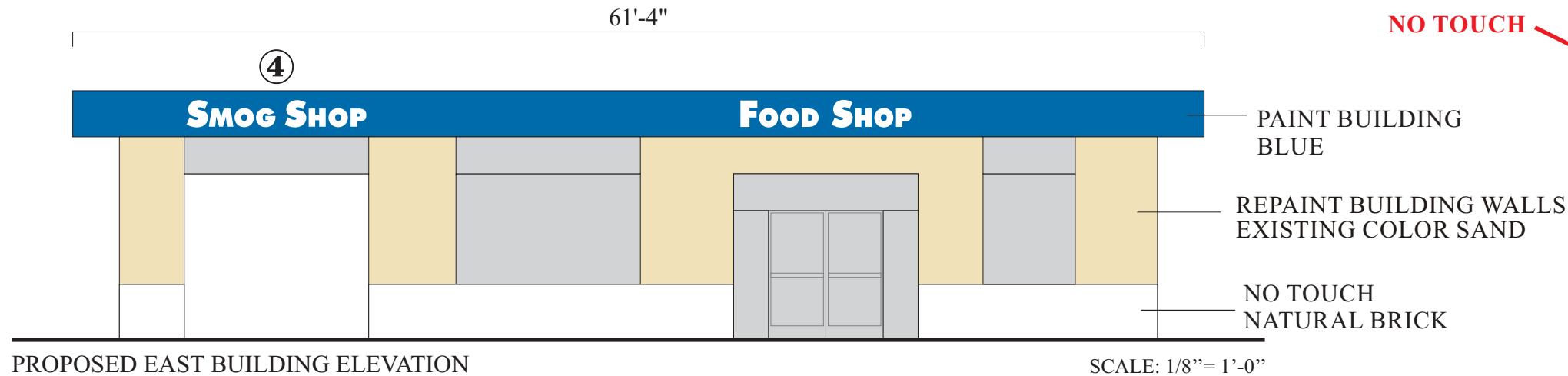
PAGE: 4 OF 8

DATE: 02.20.19SM

**REV: 03.13.19BA 06.24.19GO 06.27.19GO
07.01.19GO 07.12.19GO 11.13.19GO**

Valero

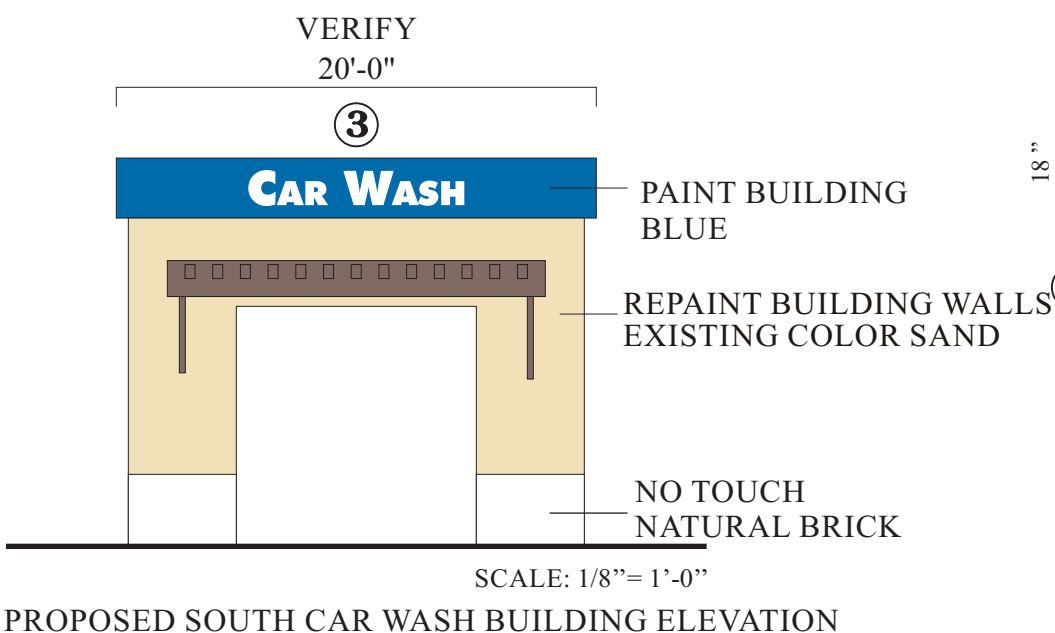
**1699 DeANZA BLVD.
CUPERTINO, CA 95014**



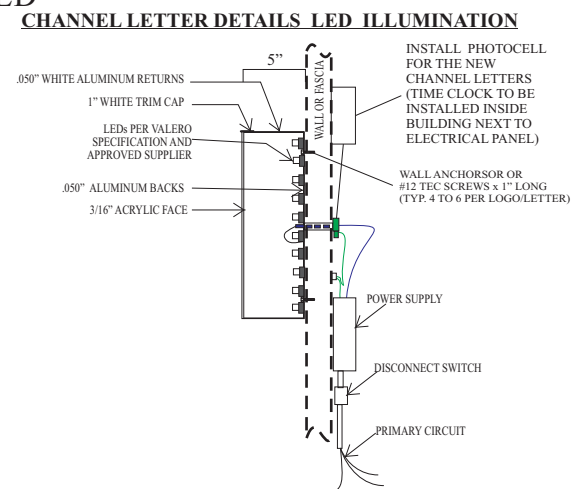
NOTES:
REMOVE ALL EXISTING BANNERS AND AD SIGNS FROM BUILDING.
PAINT ALL FOUR (4) SIDES OF BUILDING EXTERIOR VALERO SAND.
PAINT FRONT, BACK, AND ONE (1) SIDE OF CAR WASH BUILDING VALERO SAND.
PAINT BUILDING & CAR WASH FASCIA VALERO BLUE.
INSTALL NEW SET ILLUMINATED CHANNEL LETTERS.
PAINT ALL BUMPER POLES VALERO BLUE.
NO TOUCH EXISTING NATURAL BRICK.



EXISTING EAST BUILDING ELEVATION



ALL ILLEGAL WINDOW SIGNAGE, WALL SIGNAGE, AND FREESTANDING SIGNAGE WILL BE REMOVED PRIOR TO SIGNAGE FINAL.



EXISTING SOUTH CAR WASH ELEVATION



Sign Development Inc.

License #576277

Upland, CA 91786 (909) 920-5535

PROPRIETARY INFORMATION. The information disclosed in this document, including all drawings, designs and related materials, is the valuable and proprietary information of Sign Development Inc. It is provided solely for the purpose of evaluation for purchase and, without the express written authorization of Sign Development Inc., may not be disclosed or duplicated, in whole or in part, for any reason. Sign Development Inc. expressly reserves all patent, copyright and other proprietary rights to this document, including all design, manufacturing, reproduction, use, and sales rights thereto. © 2011 SIGN DEVELOPMENT INC.

CUSTOMER APPROVAL

SIGN AND PRINT FULL NAME

DATE

NO. U7180

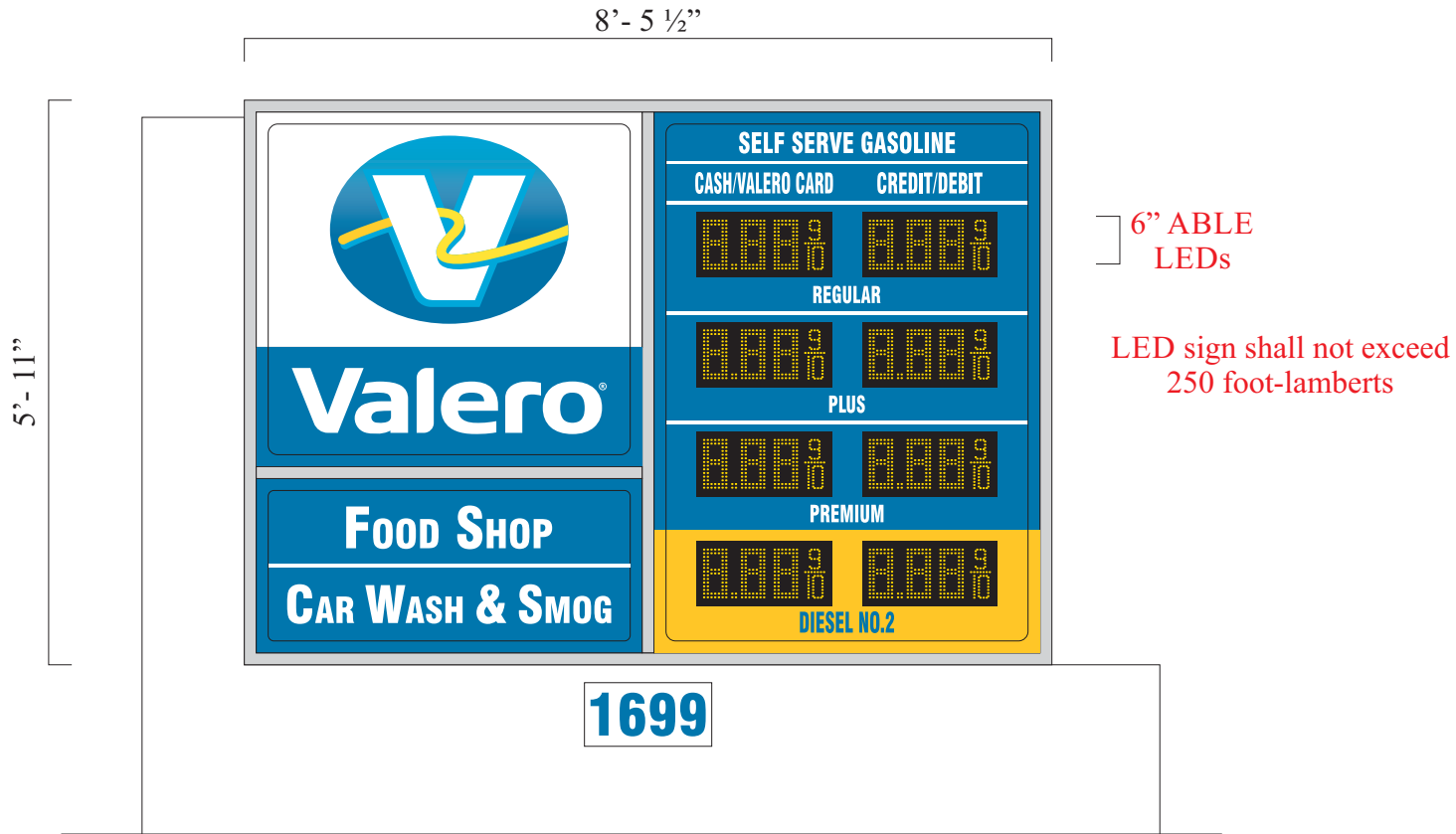
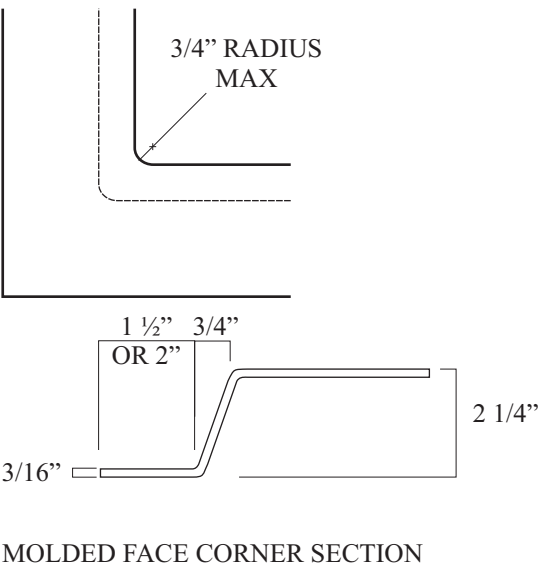
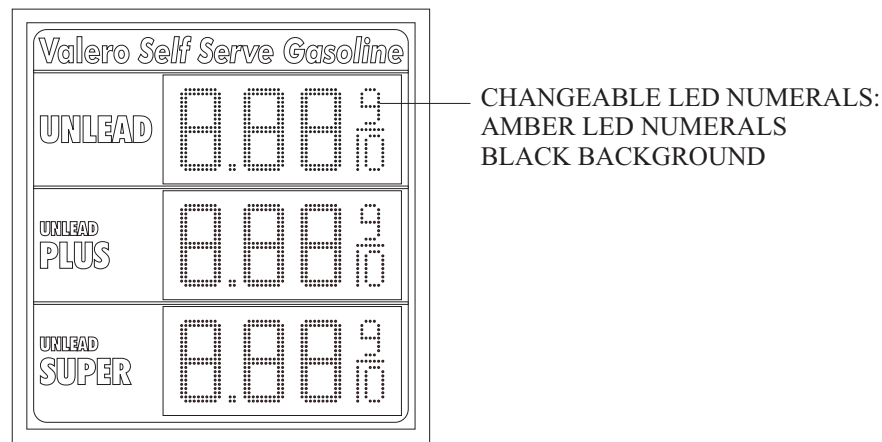
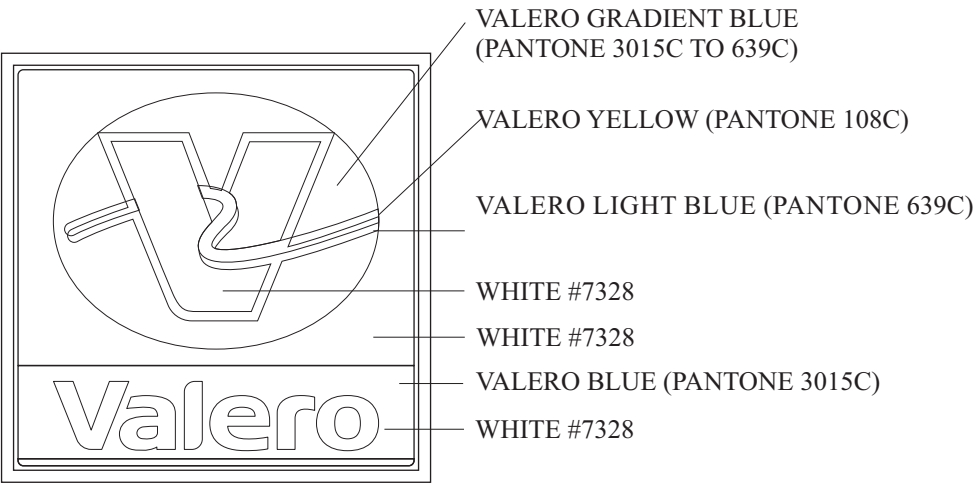
PAGE: 5 OF 8

DATE: 02.20.19SM

**REV: 03.13.19BA 06.24.19GO 06.27.19GO
07.01.19GO 07.12.19GO 11.13.19GO**

Valero

**1699 DeANZA BLVD.
CUPERTINO, CA 95014**



① REFACE EXISTING D/F PRICE ID SIGN 50.04 sq.ft. SCALE: 1/2"=1'-0"

REFACE/REPAINT EXISTING CABINET.

CABINET CONSTRUCTION: ALUMINUM
ILLUMINATION/ELECTRICAL: STANDARD FLOURESCENT
COOL WHITE HIGH OUTPUT INTERNAL ILLUMINATION,
INTERNAL MAGNETEK BALLASTS (OR EQUAL), UL LABEL
AND VISIBLE DISCONNECT SWITCH ALL ELECTRICAL
COMPONENTS TO BE UL LISTED
AND APPROVED

FACE MATERIALS: MOLDED HIGH IMPACT POLYCARBONATE
FACES WITH TRANSLUCENT 3M VINYL
SECOND SURFACE DECORATION

FINISH SPECIFICATIONS: SHERWIN WILLIAMS
PAINTED, RETAINERS, DIVIDER BARS, POLE AND
BASE TO MATCH VALERO LIGHT GRAY

GENERAL NOTE: ALL SIGNAGE TO BE MANUFACTURED
AND INSTALLED ACCORDING TOLOCAL AND NATIONAL
BUILDING AND ELECTRICAL CODES

**ALL ILLEGAL WINDOW SIGNAGE,
WALL SIGNAGE, AND FREESTANDING
SIGNAGE WILL BE REMOVED PROIR
TO SIGNAGE FINAL.**



Sign Development Inc.

License #576277

Upland, CA 91786 (909) 920-5535

PROPRIETARY INFORMATION. The information disclosed in this document, including all drawings, designs and related materials, is the valuable and proprietary information of Sign Development Inc. It is provided solely for the purpose of evaluation for purchase and, without the express written authorization of Sign Development Inc., may not be disclosed or duplicated, in whole or in part, for any reason. Sign Development Inc. expressly reserves all patent, copyright and other proprietary rights to this document, including all design, manufacturing, reproduction, use, and sales rights thereto. © 2011 SIGN DEVELOPMENT INC.

CUSTOMER APPROVAL

SIGN AND PRINT FULL NAME

DATE

NO. U7180

PAGE: 6 OF 8

DATE: 02.20.19SM

**REV: 03.13.19BA 06.24.19GO 06.27.19GO
07.01.19GO 07.12.19GO 11.13.19GO**

Valero

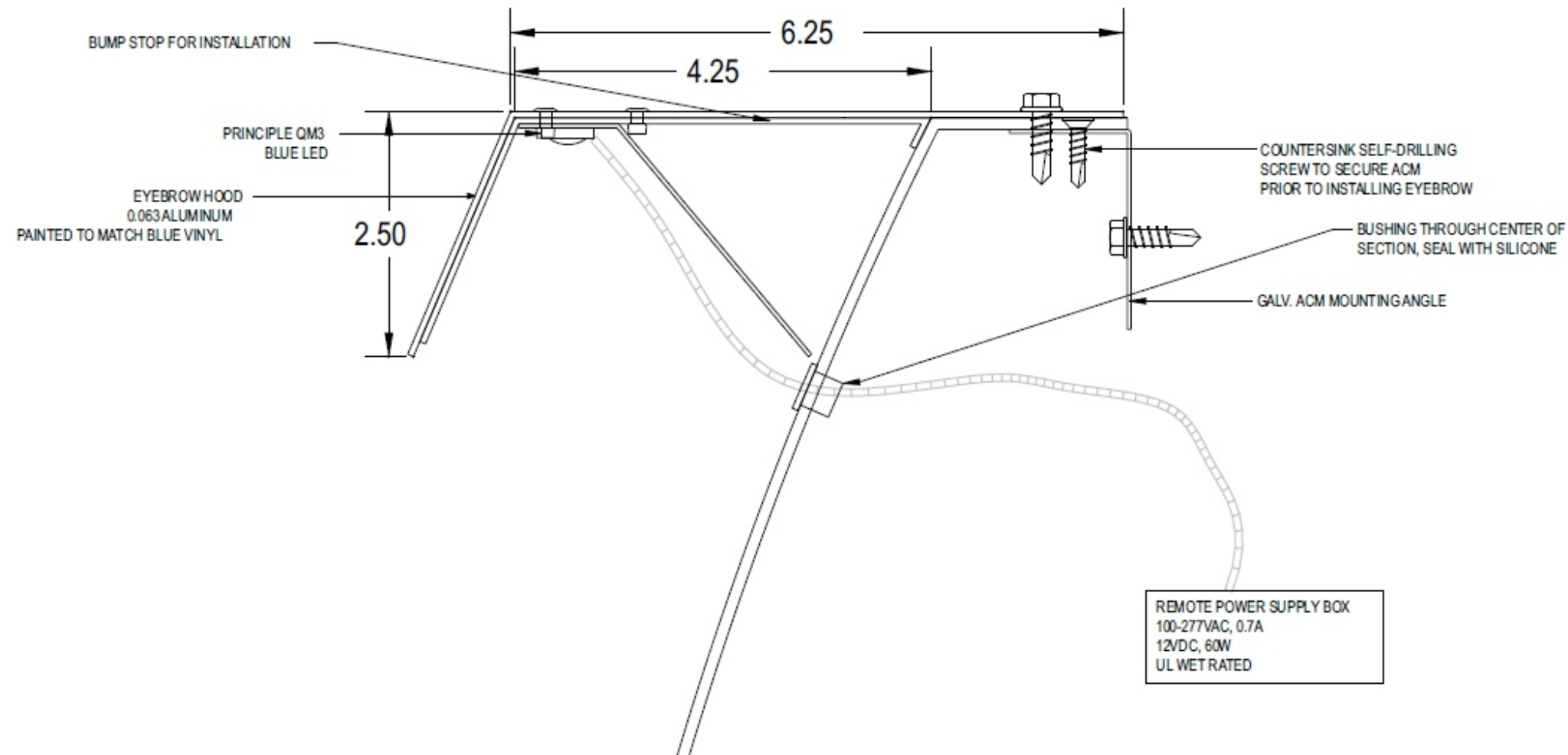
**1699 DeANZA BLVD.
CUPERTINO, CA 95014**

ALL ILLEGAL WINDOW SIGNAGE,
WALL SIGNAGE, AND FREESTANDING
SIGNAGE WILL BE REMOVED PROIR
TO SIGNAGE FINAL.

NIGHT PHOTO OF EYEBROW



EYEBROW SECTION VIEW DETAILS LED ILLUMINATION



Sign Development Inc.

License #576277

Upland, CA 91786 (909) 920-5535

PROPRIETARY INFORMATION. The information disclosed in this document, including all drawings, designs and related materials, is the valuable and proprietary information of Sign Development Inc. It is provided solely for the purpose of evaluation for purchase and, without the express written authorization of Sign Development Inc., may not be disclosed or duplicated, in whole or in part, for any reason. Sign Development Inc. expressly reserves all patent, copyright and other proprietary rights to this document, including all design, manufacturing, reproduction, use, and sales rights thereto. © 2011 SIGN DEVELOPMENT INC.

CUSTOMER APPROVAL

SIGN AND PRINT FULL NAME

DATE

NO. U7180

PAGE: 8 OF 8

DATE: 02.20.19SM

REV: 03.13.19BA 06.24.19GO 06.27.19GO
07.01.19GO 07.12.19GO 11.13.19GO

Valero

1699 DeANZA BLVD.
CUPERTINO, CA 95014