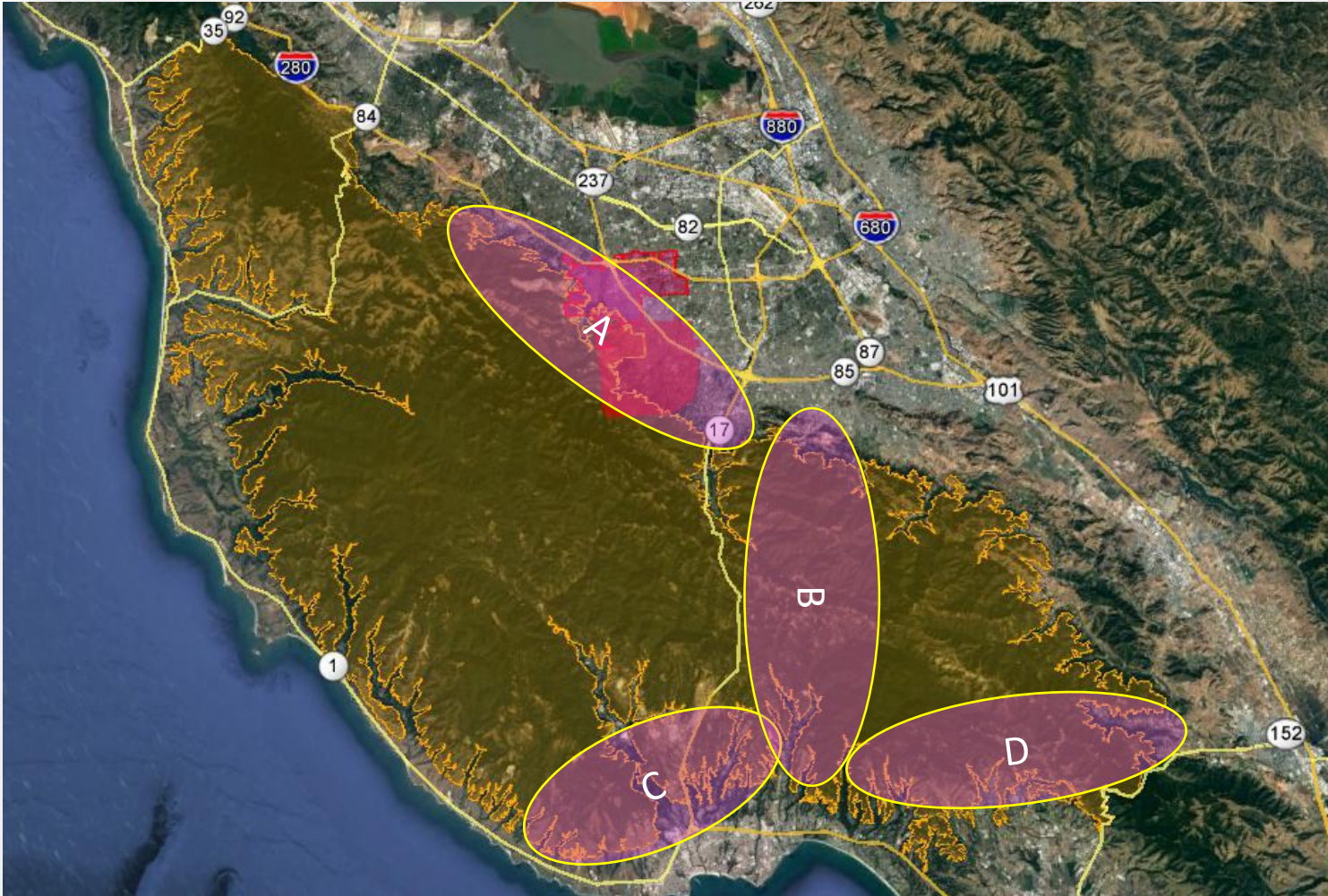


Signage

- 3 components:
 - **Wine Trail Sign**
(24" x 30")
 - **Directional Arrow**
(10" x 12")
 - **Directional w/Mileage**
(42" x 18")
- *Selection site dependent*



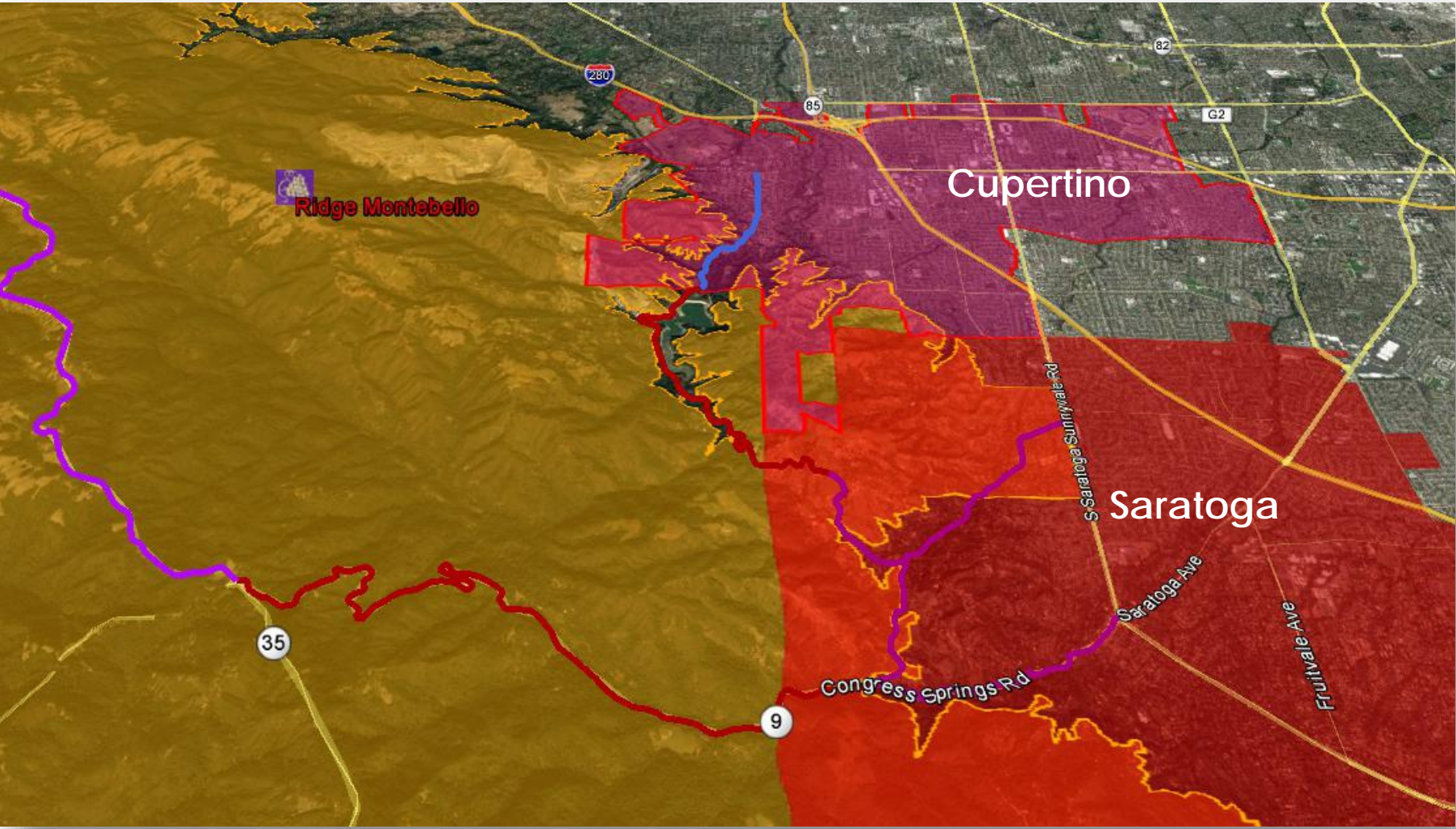
Geography



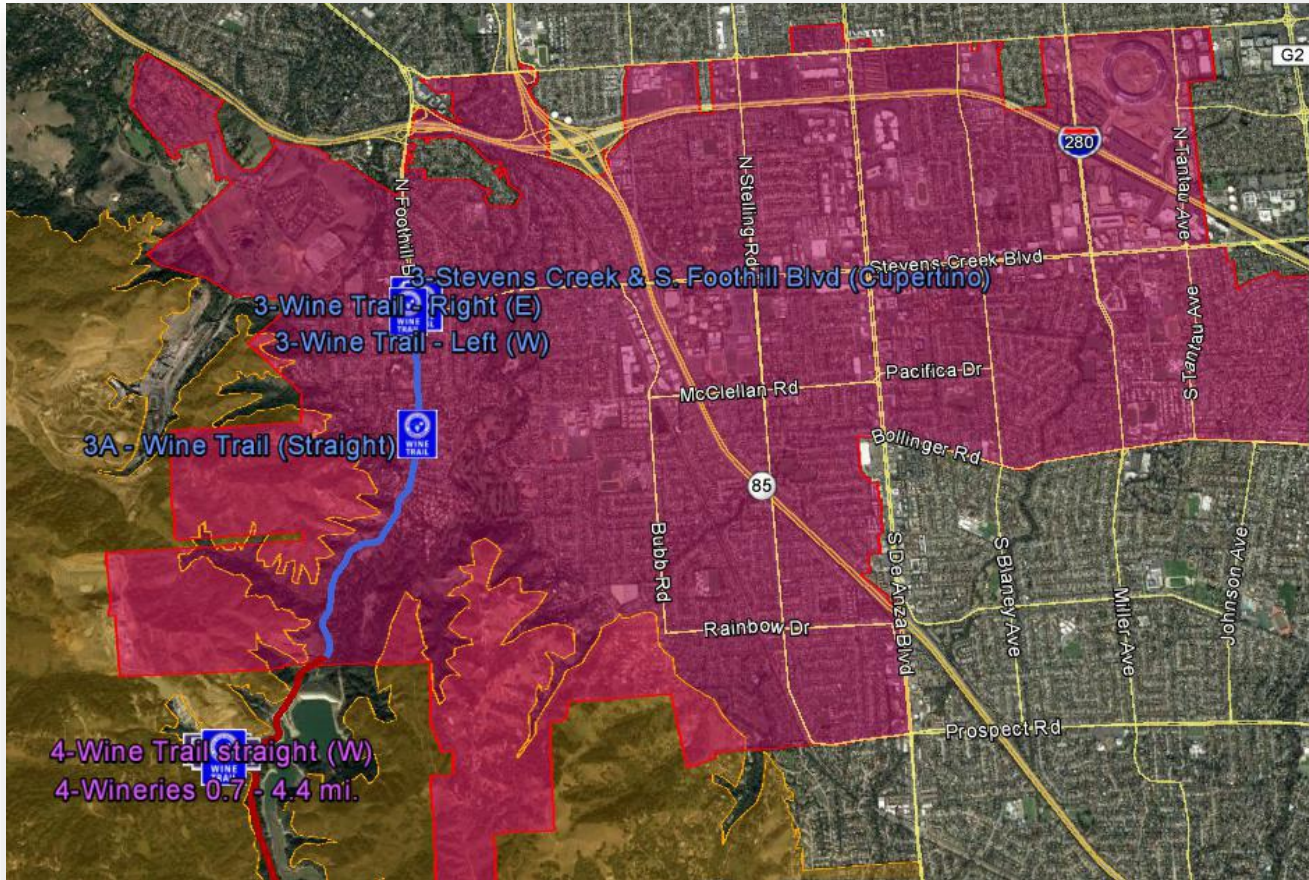
SCMWA Regions

- A. Saratoga-Cupertino-Skyline
- B. Summit – Soquel
- C. Surf City
- D. Corralitos

Geography



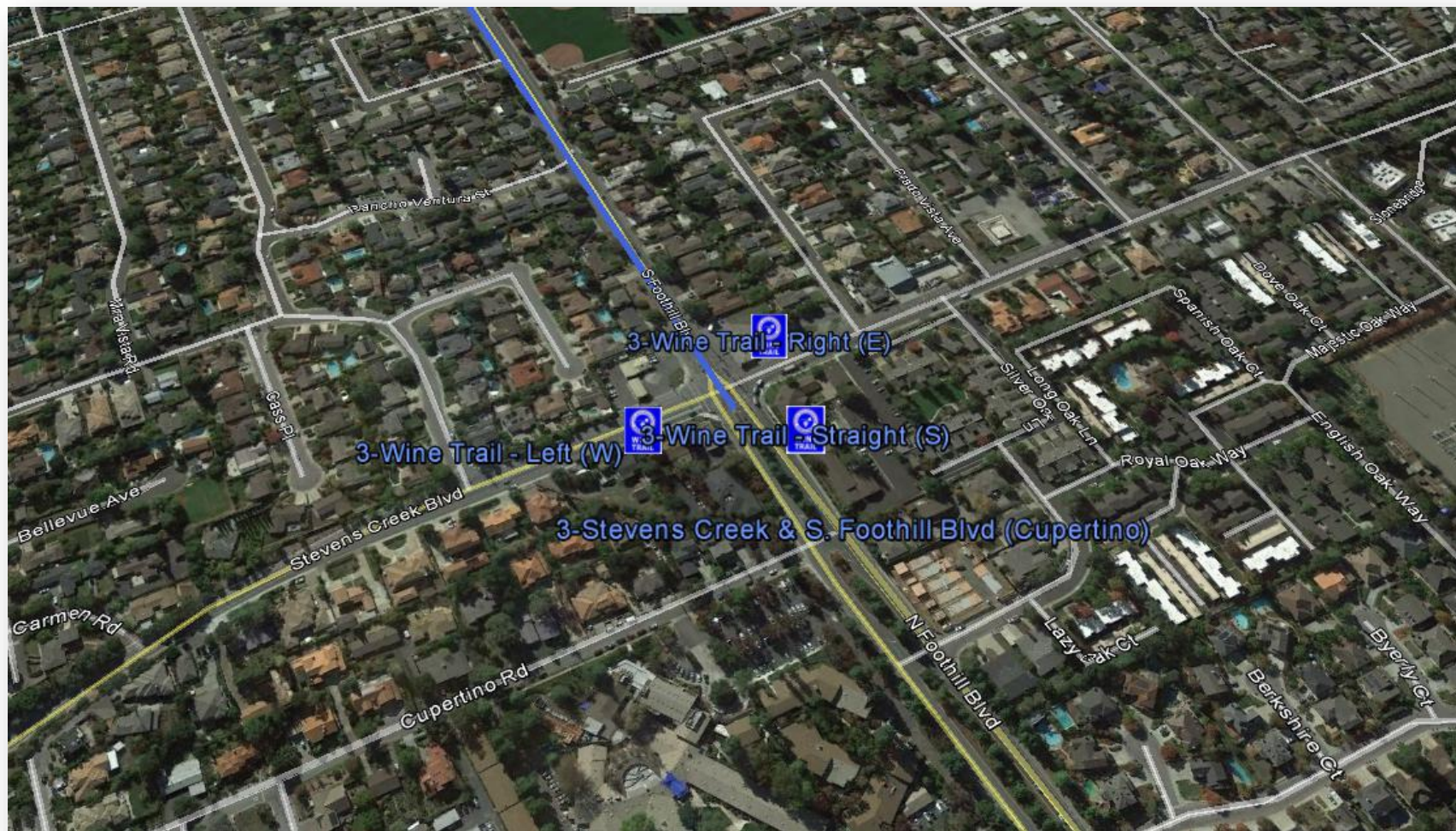
Geography



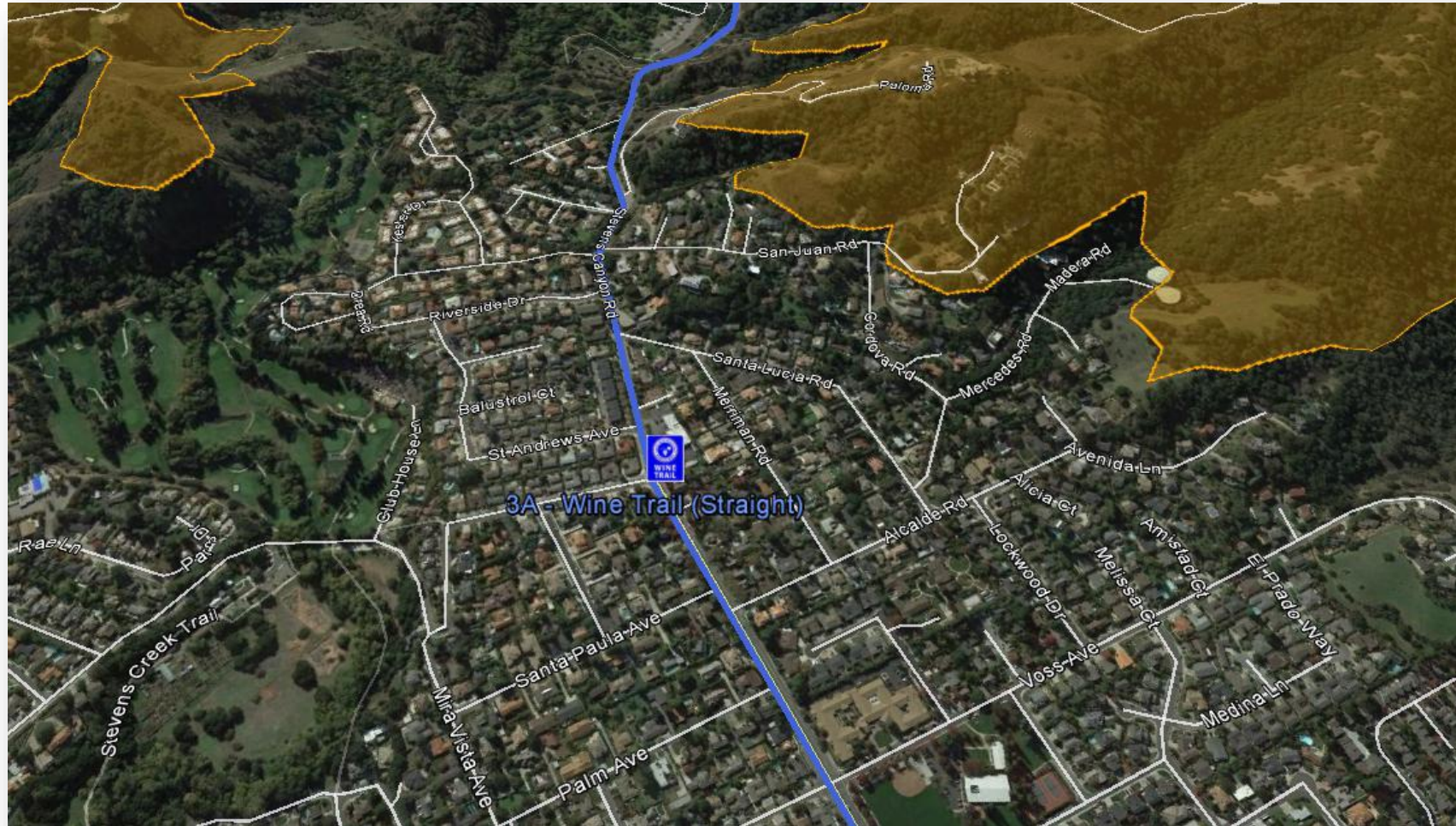
- City of Cupertino*
- Stevens Creek and South Foothill Blvd
- Foothill Blvd

* 1 Santa Clara County location

Locations: Stevens Creek @ Foothill Blvd



Locations: Foothill Blvd @ St Andrews Ave



Signage Summary

Location	Wine Trail w/Arrows	Winery Directional
Stevens Creek @ Foothill Blvd	3	
Foothill Blvd @ St Andrews Ave	1	
Along Stevens Creek Blvd @ N Wolfe Rd, De Anza Blvd, Stelling Road, and Bubb Rd	4	
Along Stevens Creek Blvd @ De Anza Blvd		
Totals	8	0