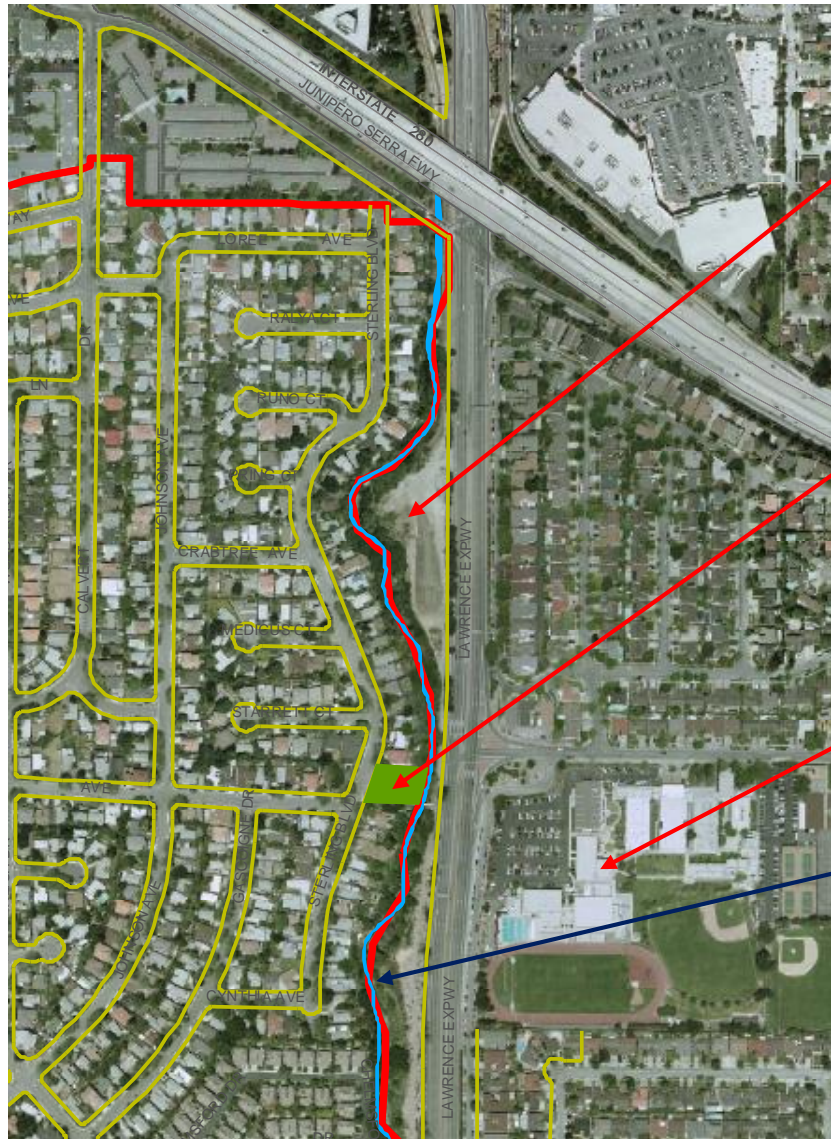


ATTACHMENT A-1 – MAPS & AERIAL PHOTOS

LAWRENCE-MITTY PARCEL at SARATOGA CREEK & TRAIL



County Roads & Airports parcel,
current materials storage site,
acquire for park use

APN 375-21-333, 001, 7.1 acres,
parcel between creek & expressway, approx. limits
Lawrence Expwy near Hwy 280 to south of Mitty Way

Sterling Barnhart Park
bridge & trailhead access to
Saratoga Creek & exist. trail segment

Mitty High School

Saratoga Creek
(light blue line)

Cupertino City Limit = red line

ATTACHMENT A-2

County Corporation Yard & Adjacent San Jose Water Co. Parcel, Lawrence Expressway at Doyle Rd.



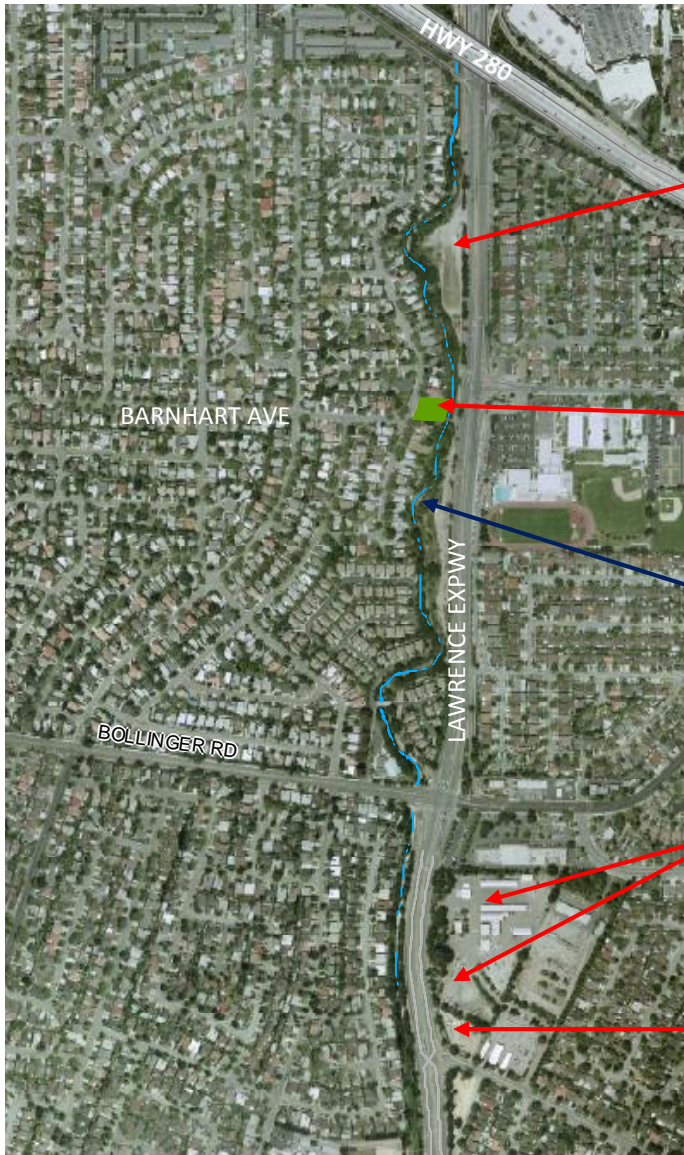
County Roads & Airports exist. corporation yard, southeast of Bollinger & Lawrence Expwy.

APN 381-19-002

San Jose Water Co. parcel, APN 381-19-015, Adjacent to exist. County corp. yard.

ATTACHMENT A-3

AREA MAP OF LAWRENCE-MITTY & LAWRENCE-DOYLE PARCELS



County Roads & Airports parcel,
current materials storage site,
acquire for park use

APN 375-21-333, 001, 7.1 acres,
parcel between creek & expressway

Sterling-Barnhart Park,
bridge & trailhead access to
Saratoga Creek & exist. trail segment

Saratoga Creek

County Roads & Airports
corporation yard,
APN 381-19-002

San Jose Water Co. parcel,
APN 381-19-015, adj. to exist. County corp. yard.