

All-Inclusive Playground Grant Opportunity

City Council
October 2, 2018



CUPERTINO

All-Inclusive Playgrounds

- Provide recreational play for people of all ages and abilities
- Disabilities are not just physical but also mental, emotional, & developmental
 - Includes autistic population; cognitively challenged; visually & hearing impaired; sensory or social/emotional or communication challenges; physical or mobility limitations, & the aging & frail population
- Nearly 1/5 of population has a physical, sensory or intellectual disability (per National Organization on Disability)

All-Inclusive Playgrounds

- Elements are accessible “not only to the 10% of those with disabilities that use wheelchairs, but also to the 90% of those with disabilities who are not in wheelchairs”
(AIPG program procedural guide)
- A place for active & passive play with features that can be shared by all, side to side
- People with challenges can freely interact with family members & friends
- Exceeds ADA standards

All-Inclusive Playground Feasibility Study

Primary Tasks

- Identify & evaluate potential park sites
- Develop sample conceptual plans and construction estimates
- Provide materials to support grant applications



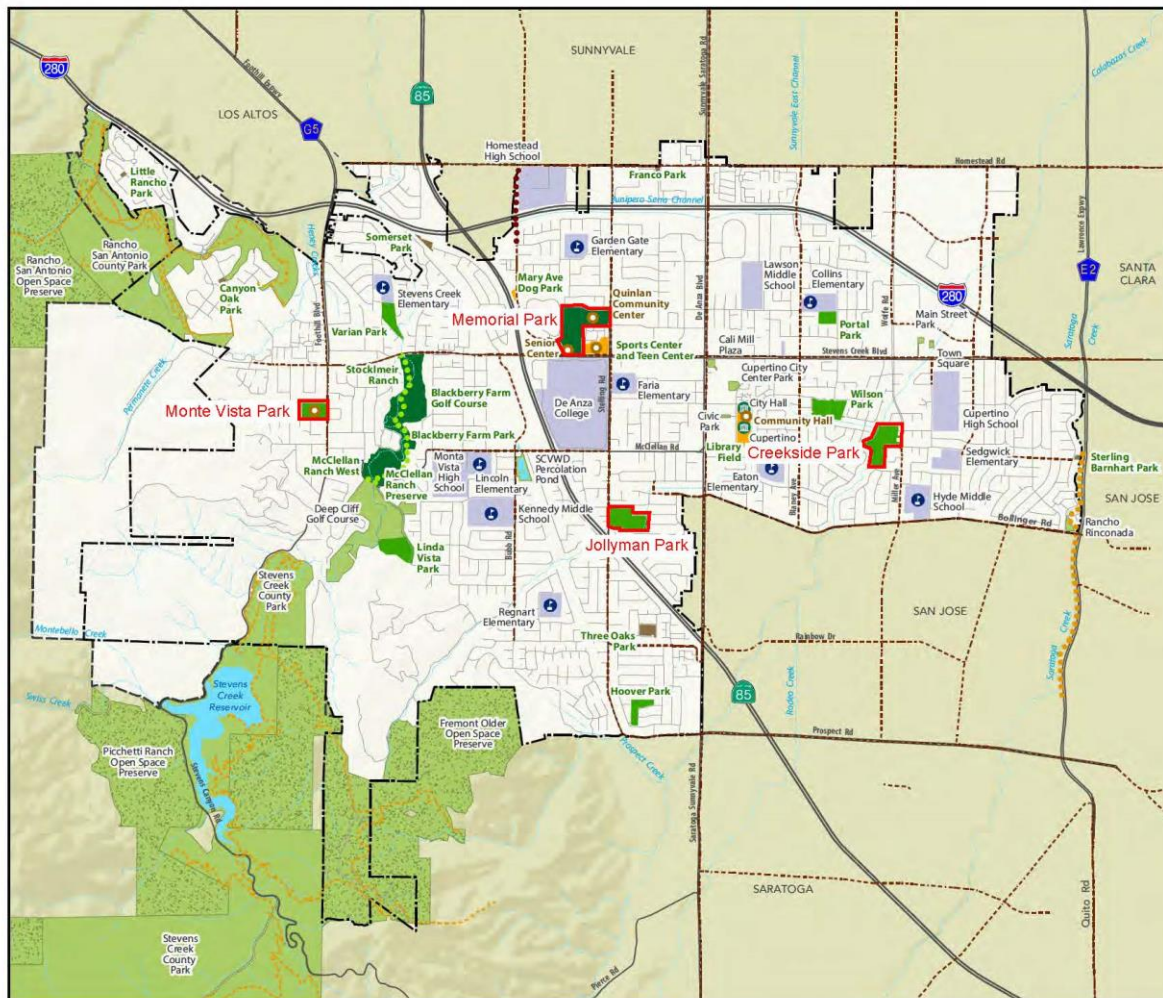
Site Selection Criteria

- Within city limits
- Proximity to arterial or collector streets
- Space available for play area
- Topography (can be made ADA-compliant)
- Can be inviting for users of all ages & abilities
- Park uses appropriate for inclusive play area



Sites Evaluated

- Memorial Park
- Jollyman Park
- Creekside Park
- Monta Vista Park



EXISTING PARKS AND RECREATION FACILITIES MAP

Selected Feasibility Study Parks

Park and Recreation Facilities




Cupertino Parks and Recreation Facilities

-  Community Parks
-  Large Neighborhood Parks
-  Small Neighborhood Parks
-  Special Use Sites

Other Recreation Resources

-  Park & Recreation Resources
-  Open Space Preserves
-  Schools and Colleges

Trail Corridors

-  Don Burnett Bicycle-Pedestrian Bridge & Homestead Rd. to Mary Ave. Trail
-  Stevens Creek Trail
-  Saratoga Creek Trail





Trails and Bike Facilities

-  Park/Open Space Trails
-  Class II Bike Lane

Recreation Centers/Fields

-  Recreation Centers/Facilities
-  Other Facilities
-  School Sport Fields Managed by City

Base Map Features

-  Cupertino City Boundary
-  Cupertino Sphere of Influence*
-  Creeks and Channels
-  Water Bodies

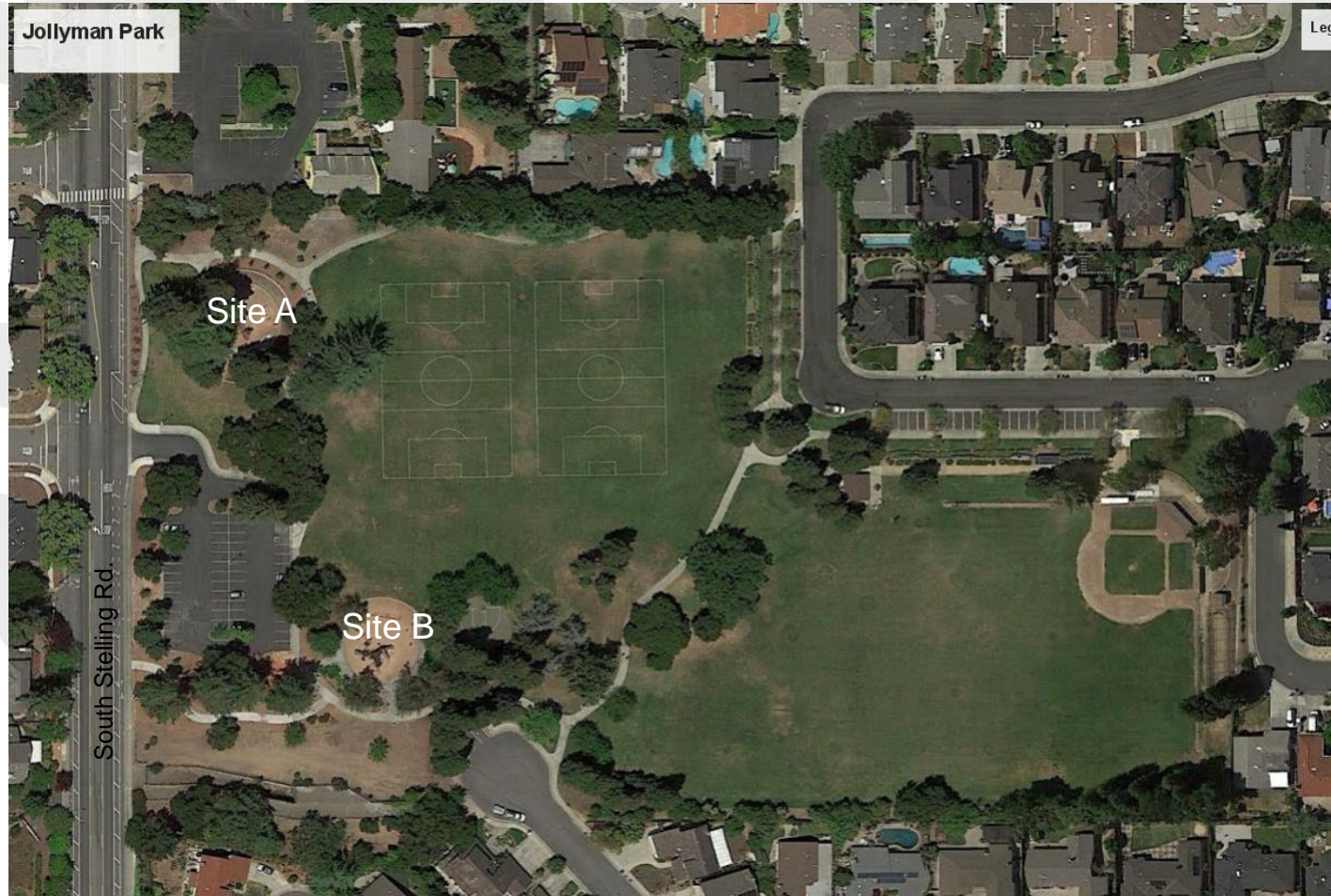


Conclusions

Top choice:

- Jollyman Park, sites A and B (at existing play areas)
- Parks & Recreation Commission endorsed findings June 7, 2018
- Consultant developed sample concept plans
- All have common elements

Jollyman Park



Swing Zone



Biggo Swing



Sway Glider



Wheelchair Swing



Bucket Swing

Spinner Zone



Spinner Bowl



Dish Spinner



Integration Carousel



Net Spinner

Slide Zone



Roller Slide



Tunnel Slide



S Slide



Double Slide

Climbing Zone



Climber Net



Climber Wall



Loop Climbers



Climbing Eagles Nest

Sound and Tactile Zone



Laser Harp



Chimes



Tuned Drums



Kettle Drum

Tot Zone



Tot Slide



Expression Swing



Play House



See-Saw

Conceptual Plans

- Presented to Parks & Recreation Commission with budgetary estimates August 6, 2018
- Public input was favorable

Site Plan, Jollyman Park



Conceptual Layout Plans, Jollyman Park



Conceptual Layout Plans, Jollyman Park

Main Entry

- Fun Directional Signage
- Stroller Parking
- Decorative Paving
- Arbor
- Bike Racks

ADA Accessible Parking and Path of Travel

Platform Overlook with Guardrail

Sound and Sensory Zone

- Laser Harp
- Musical Music Features
- Quiet Cocoon

Art Wall

Bridges

- Sway Bridge
- Steble Bridge

Playhouse

- 2 Story

Open Play

- Seating
- Shade Structure

Look Outs

Planting

Art Element

Sloping Path with Handrails Existing Path

Stage

Perimeter Fence



Existing Park

Spinner Zone

- Shade Sail
- Quiet Cocoon

Slide and Climbing Zone

Climbing Cargo Net

Swing and Sway Zone

Colored Concrete

Tot Zone

- Quiet Cocoon
- Slide
- Climbing Giraffe
- Kinder Bells
- Seesaw

Proposed Shade Trees - Typical

Textured Zone Entry Banding

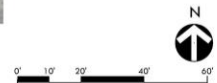
Kindness and Compassion Area

Synthetic Turf Slopes and Climbing Loops

Planters with Benches - Typical

Existing Trees - Typical

Picnic Area under Existing Trees



All-Inclusive Playground Grant Opportunity

Santa Clara County All-Inclusive Playground Grant Program (AIPG)

- Feb 2017, County Board of Supervisors considers creating AIPG program
 - City officials attended & spoke in favor (Mayor Paul, CM, Rec Dir., Commissioner)
- \$10M program approved, \$2M/district
- Applications invited July 2017
- Feas. Study funding approved in 2017-18 CIP; city did not have a project identified
 - Mayor Vaidhyanathan letter to Board of Supervisors

All-Inclusive Playground Grant Opportunity

Santa Clara County All-Inclusive Playground Grant Program (AIPG)

- Jan. 2018 Board of Supervisors approves awards including all \$2M available in our district
 - May 2018, funding agreements approved

+++++

- Sept. 11, 2018, new funding cycle issued
- \$10M program approved, \$2M/district
- Unique local funding opportunity
- Applications due Oct 12, 2018
 - Short turnaround

All-Inclusive Playground Grant Opportunity

Santa Clara County All-Inclusive Playground Grant Program (AIPG)

Grant Program involves some strings:

- Complete the project 3 years from agmt.
- Operate & maintain the project for 20 years
- Provide the rest of the project funding
- Provide 1:1 non-grant match

[Typical grant conditions]

All-Inclusive Playground Grant Opportunity

Santa Clara County All-Inclusive Playground Grant Program (AIPG)

If City Council is interested in this opportunity:

- Staff recommends a \$1.2M city contribution
- Request a substantial AIPG grant
- Provide the balance via fundraising
 - ~\$5M total budget
 - All-Inclusive Playground projects in our area have attracted strong donations
 - Staff to return with fundraising options
- Involve neighbors & stakeholders in planning & design process

All-Inclusive Play Feasibility Study

Parks & Recreation Commission

October 2, 2018



CUPERTINO

Jollyman Park



Site Reviews

- Evaluation included infrastructure & siting considerations
- Ranked using 38 criteria
- Additional screening considerations
 - Frequency & intensity of existing site use
 - Amount & configuration of avail. space
 - Parking Availability

Site Comparisons

PARK SITES		MEMORIAL AREA - A		MEMORIAL AREA - B		CREEKSIDE		JOLLYMAN AREA - A		JOLLYMAN AREA - B		MONTA VISTA	
SCORING AND WEIGHTING	Weighting	Score 1-5	WEIGHTED SCORE	Score 1-5	WEIGHTED SCORE	Score 1-5	WEIGHTED SCORE	Score 1-5	WEIGHTED SCORE	Score 1-5	WEIGHTED SCORE	Score 1-5	WEIGHTED SCORE
INFRASTRUCTURE NEEDS													
Restroom Building													
ADA Compliant	10	5	50	5	50	5	50	5	50	5	50	5	50
Close to Playground	10	4	40	5	50	5	50	2	20	2	20	4	40
Shade													
Shade Structures at Playground	2	0	0	0	0	5	10	0	0	0	0	0	0
Mature Trees at Playground	5	3	15	4	20	5	25	5	25	4	20	2	10
Lighting													
Lighting from Parking Lot to Play Area	2	5	10	5	10	5	10	5	10	5	10	5	10
Drinking Fountain													
ADA Compliant Fountain near Playground	2	3	6	5	10	5	10	2	4	5	10	2	4
Utilities													
Drainage near Playground	2	5	10	5	10	5	10	5	10	5	10	3	6
Domestic Water near Playground	2	2	4	5	10	5	10	2	4	5	10	4	8
Sanitary Sewer near Playground	5	2	10	5	25	5	25	2	10	2	10	4	20
Electrical Service near Playground	2	5	10	5	10	5	10	1	2	1	2	4	8
Irrigation Service near Playground	2	5	10	5	10	4	8	4	8	4	8	3	6
Parking													
Standard Stalls	10	5	50	5	50	5	50	5	50	5	50	5	50
Accessible Stalls 6-8 Stalls	10	3	30	3	30	4	40	2	20	2	20	4	40
Bicycle Parking near Playground	1	1	1	2	2	4	4	1	1	1	1	0	0
Availability of existing parking	20	1	20	1	20	2	40	3	60	3	60	4	80
Circulation													
Accessible Paths throughout Park	5	5	25	4	20	5	25	5	25	5	25	3	15
Accessible Ramp and Path from Parking	5	4	20	4	20	5	25	5	25	5	25	5	25
Public Bus Stop near Park	5	5	25	5	25	5	25	3	15	3	15	2	10
Adjacent Facilities													
Basketball Courts too close to Playground	5	5	25	5	25	1	5	5	25	1	5	5	25
Soccer Field close to Playground	10	5	50	5	50	3	30	3	30	3	30	5	50
Softball Field-close to Playground	10	3	30	5	50	5	50	5	50	5	50	5	50
Picnic Tables close to Playground	1	2	2	5	5	5	5	5	5	5	5	4	4
Benches close to Playground	1	2	2	4	4	5	5	4	4	3	3	2	2
Frequency & scale of site use adj. to play area	10	1	10	1	10	2	20	4	40	5	50	4	40

Site Comparisons

PARK SITES		MEMORIAL AREA - A		MEMORIAL AREA - B		CREEKSIDE		JOLLYMAN AREA - A		JOLLYMAN AREA - B		MONTA VISTA	
SCORING AND WEIGHTING	Weighting	Score 1-5	WEIGHTED SCORE	Score 1-5	WEIGHTED SCORE	Score 1-5	WEIGHTED SCORE	Score 1-5	WEIGHTED SCORE	Score 1-5	WEIGHTED SCORE	Score 1-5	WEIGHTED SCORE
SITING CONDITIONS													
Acoustics													
Noise from Busy Streets	5	5	25	4	20	4	20	2	10	4	20	3	15
Noise from Sport Features	10	3	30	5	50	3	30	3	30	4	40	4	40
Noise from Neighboring Properties	2	5	10	4	8	5	10	3	6	4	8	3	6
Visibility													
Surveillance from City Street	10	0	0	2	20	0	0	5	50	0	0	5	50
Surveillance from Parking Lot	10	2	20	0	0	2	20	4	40	3	30	5	50
Surveillance from Park Features	5	5	25	5	25	2	10	5	25	5	25	2	10
Visibility from/proximity to Neighbors	5	5	25	5	25	4	20	5	25	4	20	0	0
Mature Trees													
Condition of Tree Health	5	5	25	2	10	5	25	5	25	3	15	3	15
Site Grading													
Flat Site without Obstructions	2	5	10	3	6	3	6	4	8	4	8	4	8
Gentle Slopes that Add Interest	2	3	6	4	8	0	0	2	4	5	10	1	2
Slopes that Help Create Slide Area	2	4	8	3	6	0	0	0	0	4	8	0	0
Space Available for Playground Area													
1-.5ac. (0), .6ac. (2), .7ac. (4), 8 - 1.0ac. (5)	20	5	100	4	80	2	40	4	80	5	100	2	40
Configuration & flexibility of avail. space	10	5	50	5	50	4	40	5	50	5	50	1	10
Site Location													
Central Location for Community	10	5	50	5	50	3	30	4	40	4	40	1	10
SCORE TOTALS			839		874		793		886		863		809
RANKING			4		2		6		1		3		5



ADA Accessible Path of Travel

Theme Main Entry

- Fun Directional Sign
- Stroller Parking
- Decor Paving
- Lighting
- Arbor
- Bike Racks

Sound Play Zone

with Shade Sail

Mound with Slides

Art Wall Fence

Bridge

Playhouse Location

- Option 1

Play Zone

- Seesaw
- Roller Table
- Steps to Climbing Wall

Look Outs

Theme Planting

Art Element and Sign

Climbing Zone

Ramp

Existing Path

Existing Tree Trunks

- Typical

Landscape Areas

- Typical

Bike Racks

Sound Echo Element

Theme Secondary Entry

- Sign
- Stroller Parking
- Decor Paving

Spinner Zone with Shade Sail

Picnic Area

Playground Circulation - Typical

Older Children Swing Zone

Younger Children Play and Swing Zone

Transitional Areas - Typical

Stage

Synthetic Turf Open Play Areas

Seating under Existing Trees

Playhouse Location - Option 2

Tot Play Zone

Ornamental Fencing within Landscape Buffer

Maintenance Access Gate

Quiet Area in Existing Trees

Play Zone and Use Area Signage - Typical

ADA Accessible Path of Travel

