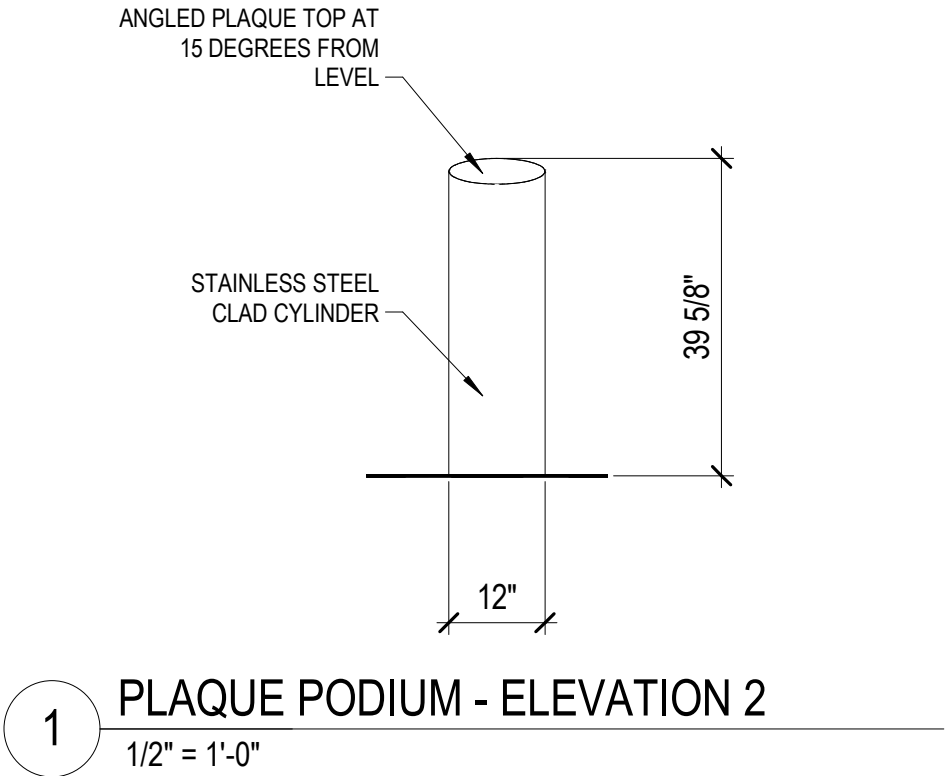
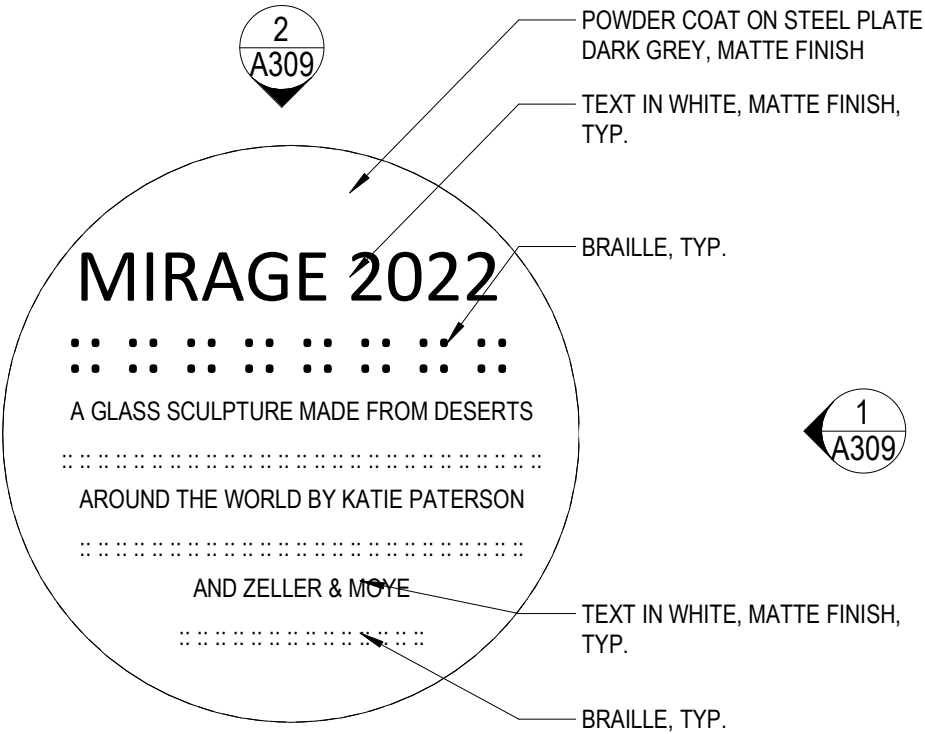


Art Title Plaque



2 PLAQUE PODIUM - ELEVATION 1  
1/2" = 1'-0"



3 ENLARGED FLOOR PLAN - TITLE PLAQUE  
3" = 1'-0"

### 1 Title Sign (from Visitor Center)

**Content:**  
'Mirage, 2022  
A glass sculpture made from deserts around the world  
by Katie Paterson and Zeller & Moye'  
Information of the Artwork  
+ Content in braille

**Material:**  
Steel, powder coating matt finish, dark gray color  
\*To match pathway material and finish,  
TBD by samples  
Text: matt finish, white color

**Height:**  
3.3' (1 m) center of plate (angled plate)

**Dimensions:**  
12" (30 cm x 30 cm)

### 2 Title Sign

**Content:**  
'Mirage, 2022  
A glass sculpture made from deserts around the world  
by Katie Paterson and Zeller & Moye'  
Information of the Artwork  
+ Content in braille

**Material:**  
Steel, powder coating matt finish, dark gray color  
\*To match pathway material and finish,  
TBD by samples  
Text: matt finish, white color

**Height:**  
3.3' (1 m) center of plate (angled plate)

**Dimensions:**  
12" x 12" (30 cm x 30 cm)

### 3 Exit Sign

**Content:**  
'Exit'  
+ Content in braille

**Material:**  
Transparent adhesive plastic  
TBD by samples  
Text: black color  
Braille as relief on the plastic

**Height:**  
3.3' (1 m) glued to glass column

**Dimensions:**  
5" x 4" (13 cm x 10 cm)

