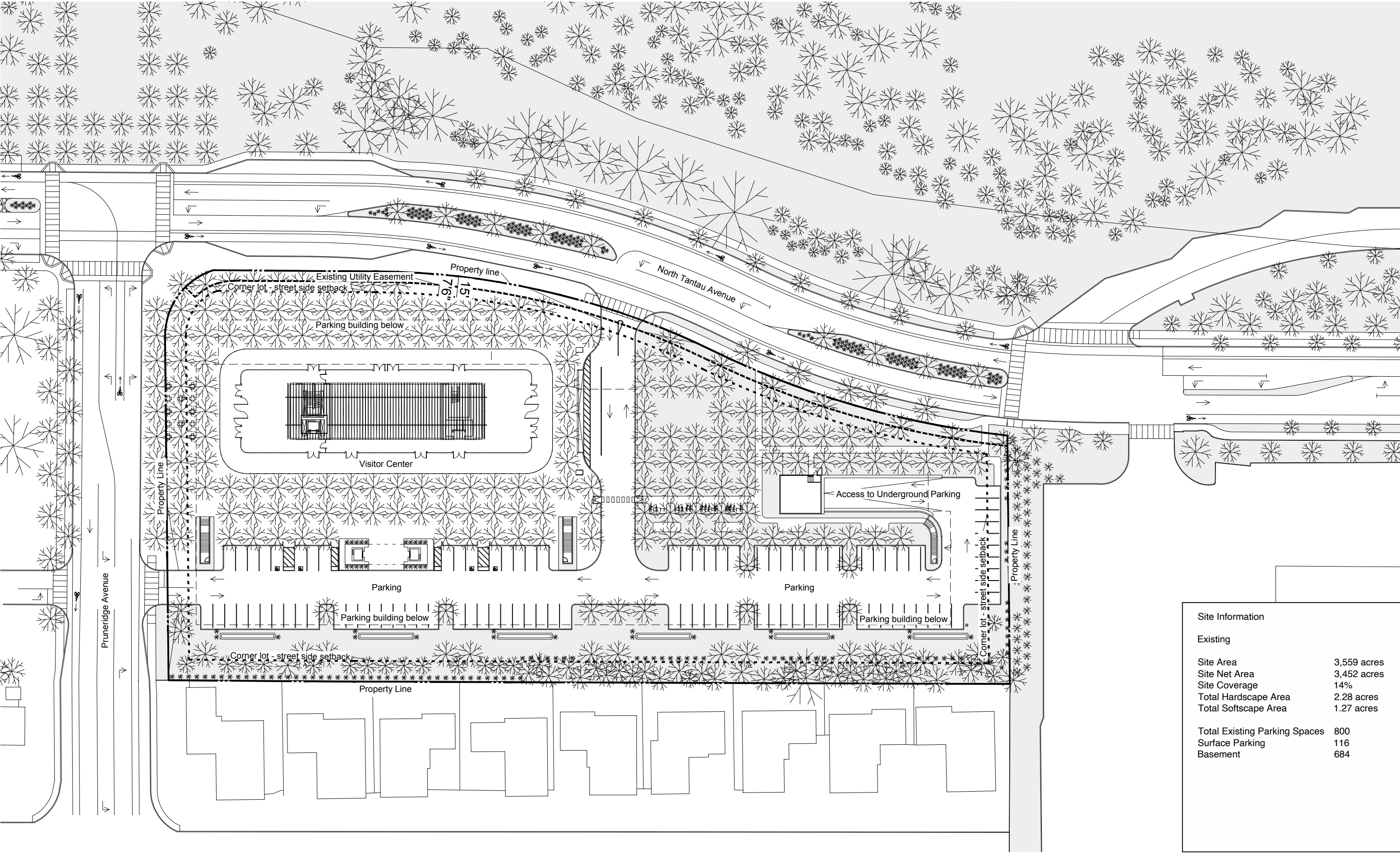
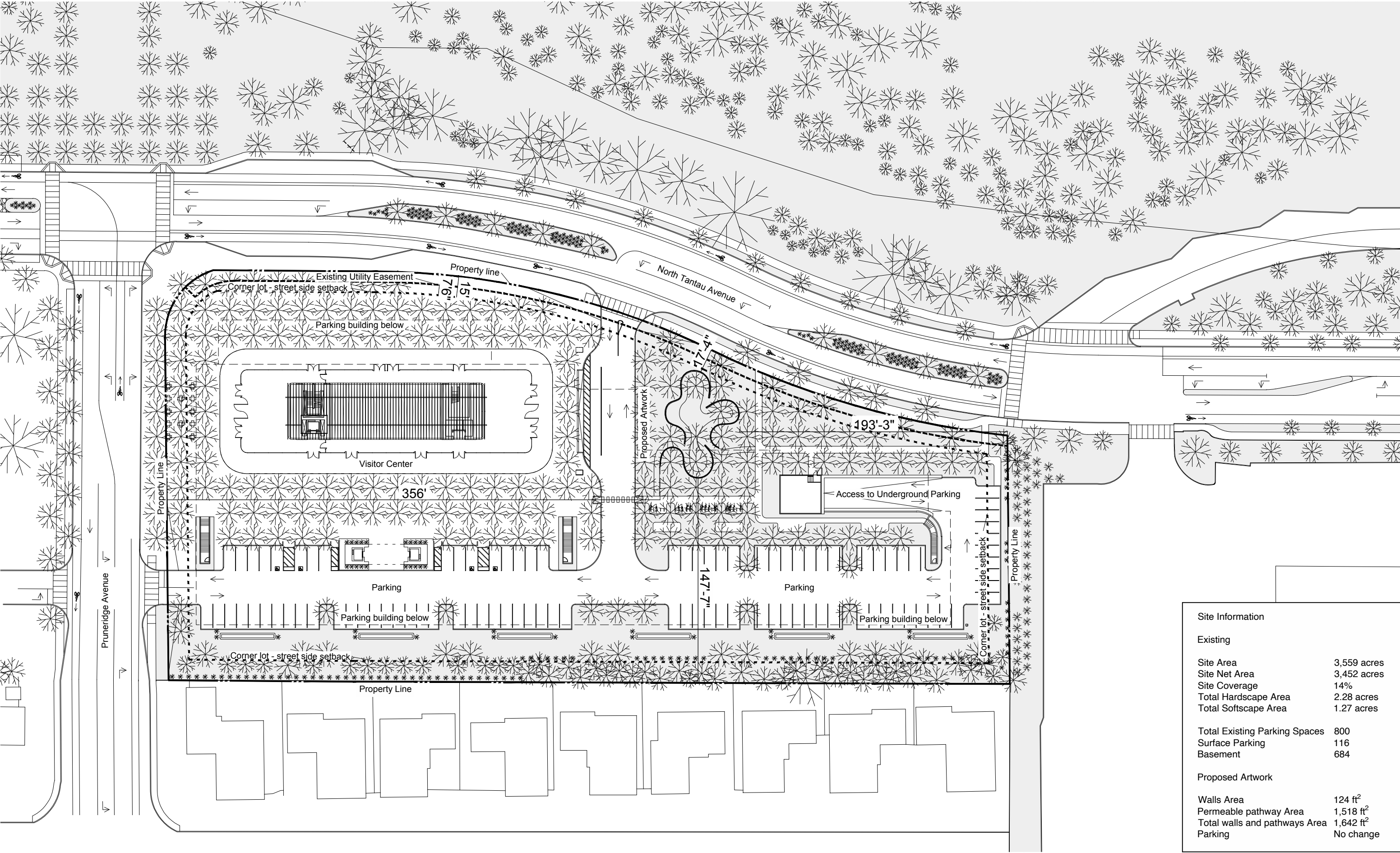


## Art & Site Design

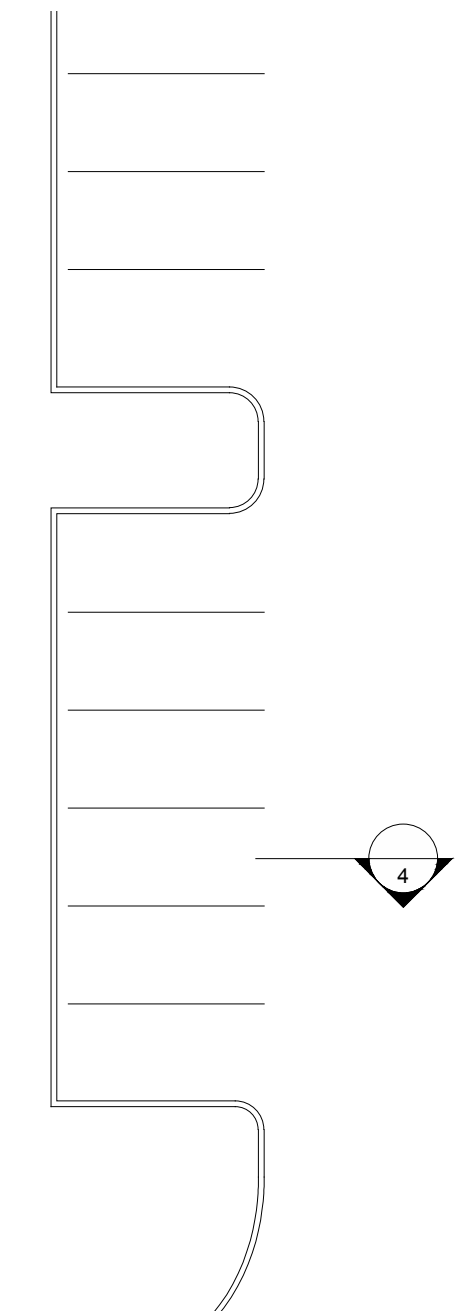
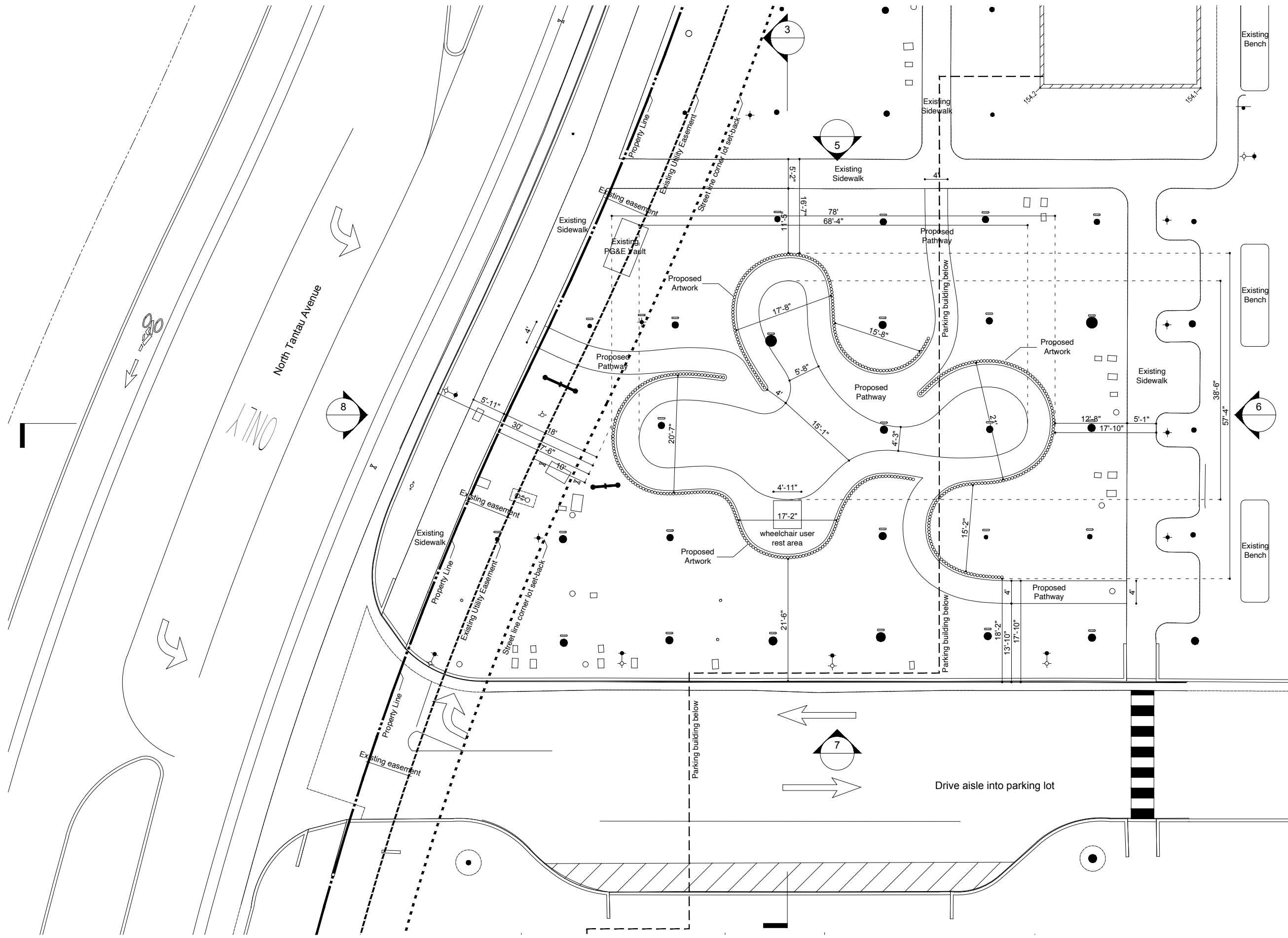


Site Information	
Existing	
Site Area	3,559 acres
Site Net Area	3,452 acres
Site Coverage	14%
Total Hardscape Area	2.28 acres
Total Softscape Area	1.27 acres
Total Existing Parking Spaces	
Surface Parking	116
Basement	684

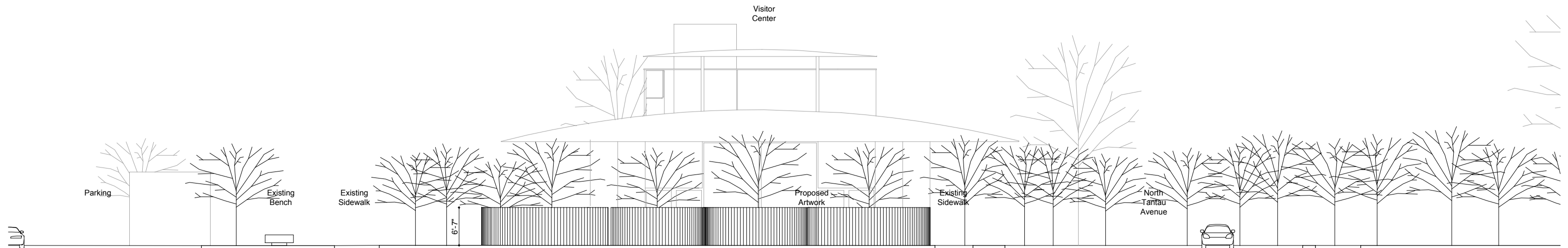


Mirage / Site Plan, 1:750  
10.09.21

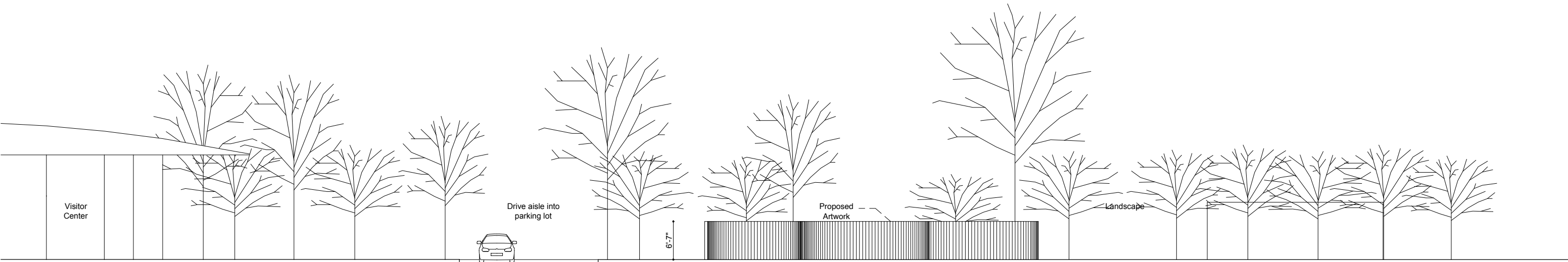
Site Information	
Existing	
Site Area	3,559 acres
Site Net Area	3,452 acres
Site Coverage	14%
Total Hardscape Area	2.28 acres
Total Softscape Area	1.27 acres
Total Existing Parking Spaces	800
Surface Parking	116
Basement	684
Proposed Artwork	
Walls Area	124 ft <sup>2</sup>
Permeable pathway Area	1,518 ft <sup>2</sup>
Total walls and pathways Area	1,642 ft <sup>2</sup>
Parking	No change



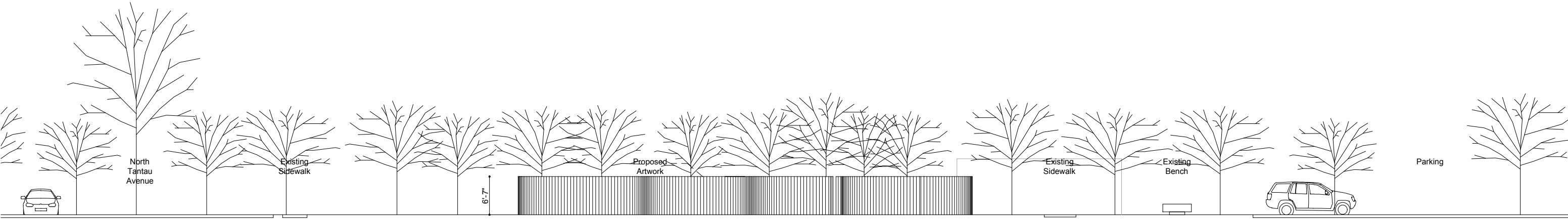




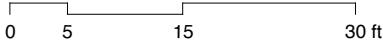
Artwork's material:  
 Pure cast glass cylinders made out of sand,  
 collected from deserts across the earth.  
 Color:  
 Translucent, with a slight coloration is expected  
 as a result of the variation of sands.

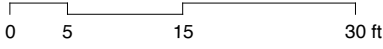
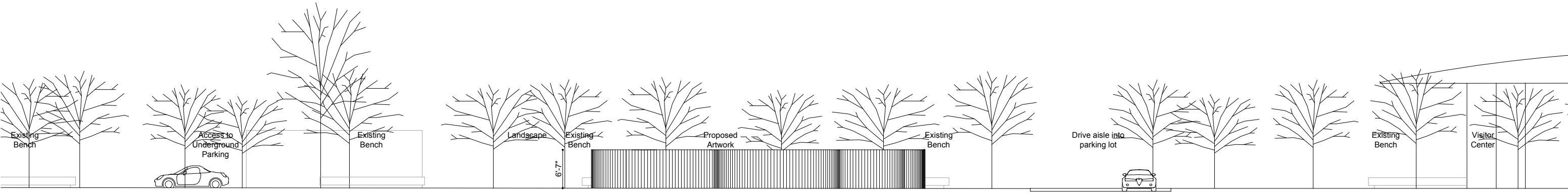


Artwork's material:  
Pure cast glass cylinders made out of sand,  
collected from deserts across the earth.  
Color:  
Translucent, with a slight coloration is expected  
as a result of the variation of sands.



Artwork's material:  
Pure cast glass cylinders made out of sand,  
collected from deserts across the earth.  
Color:  
Translucent, with a slight coloration is expected  
as a result of the variation of sands.





Glass column sample

Artwork's material:  
Pure cast glass cylinders made out of sand,  
collected from deserts across the earth.  
Color:  
Translucent, with a slight coloration is expected  
as a result of the variation of sands.



### 1 Title Sign (from Visitor Center)

**Content:**  
'Mirage, 2022  
A glass sculpture made from deserts around the world  
by Katie Paterson and Zeller & Moye'  
Information of the Artwork  
+ Content in braille

**Material:**  
Steel, powder coating matt finish, dark gray color  
\*To match pathway material and finish,  
TBD by samples  
Text: matt finish, white color

**Height:**  
3.3' (1 m) center of plate (angled plate)

**Dimensions:**  
12" (30 cm x 30 cm)

### 2 Title Sign

**Content:**  
'Mirage, 2022  
A glass sculpture made from deserts around the world  
by Katie Paterson and Zeller & Moye'  
Information of the Artwork  
+ Content in braille

**Material:**  
Steel, powder coating matt finish, dark gray color  
\*To match pathway material and finish,  
TBD by samples  
Text: matt finish, white color

**Height:**  
3.3' (1 m) center of plate (angled plate)

**Dimensions:**  
12" x 12" (30 cm x 30 cm)

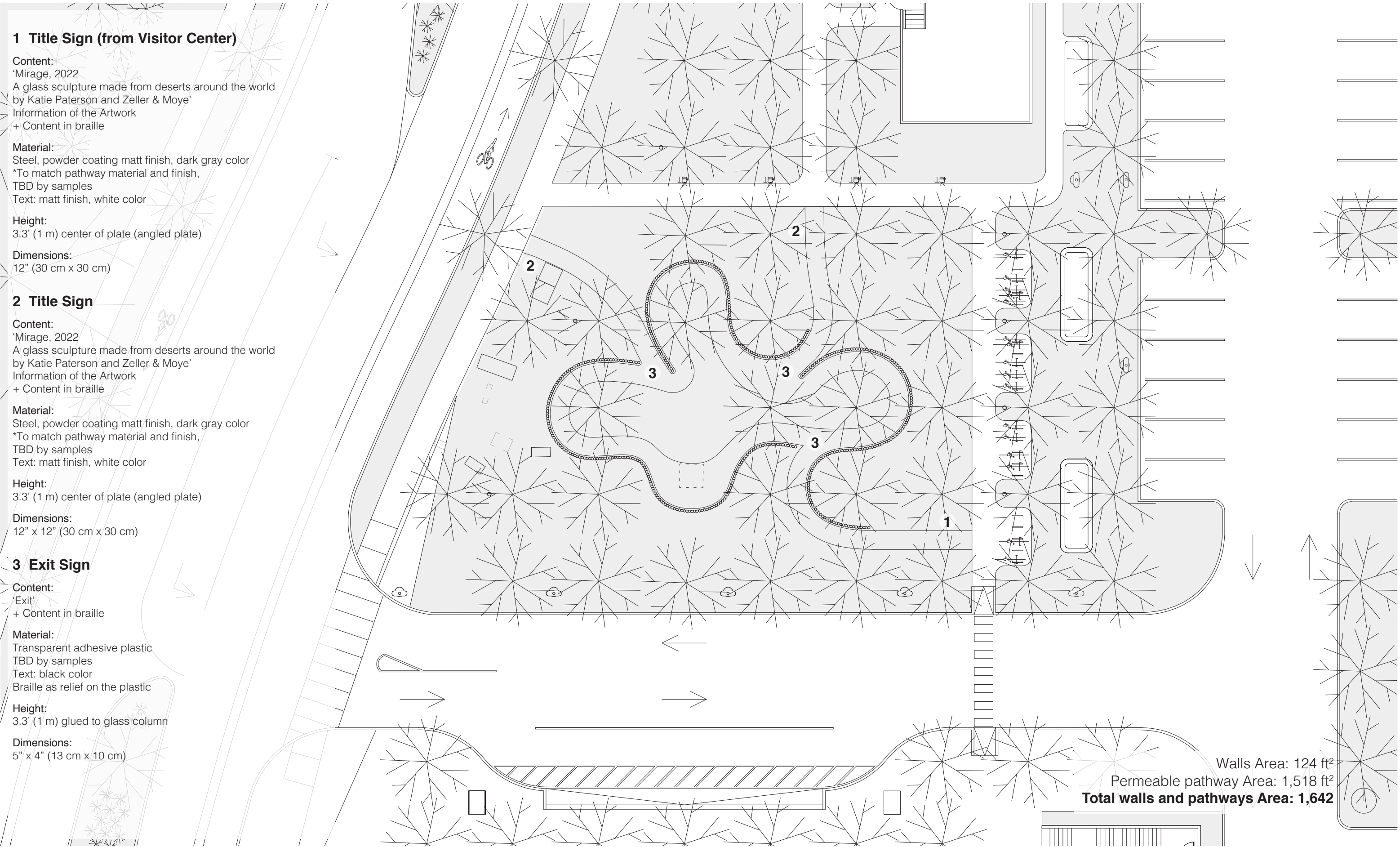
### 3 Exit Sign

**Content:**  
'Exit'  
+ Content in braille

**Material:**  
Transparent adhesive plastic  
TBD by samples  
Text: black color  
Braille as relief on the plastic

**Height:**  
3.3' (1 m) glued to glass column

**Dimensions:**  
5" x 4" (13 cm x 10 cm)





**Signage  
Concept**