

CC 06-18-21

Special Meeting
Study Session # 1

Housing
Development
Opportunities

Presentation



HOUSING DEVELOPMENT OPPORTUNITIES

June 18, 2021

Site Description

2

Land Use & Zoning

Office/Industrial /
Commercial / Residential

P (CG, ML, Res)

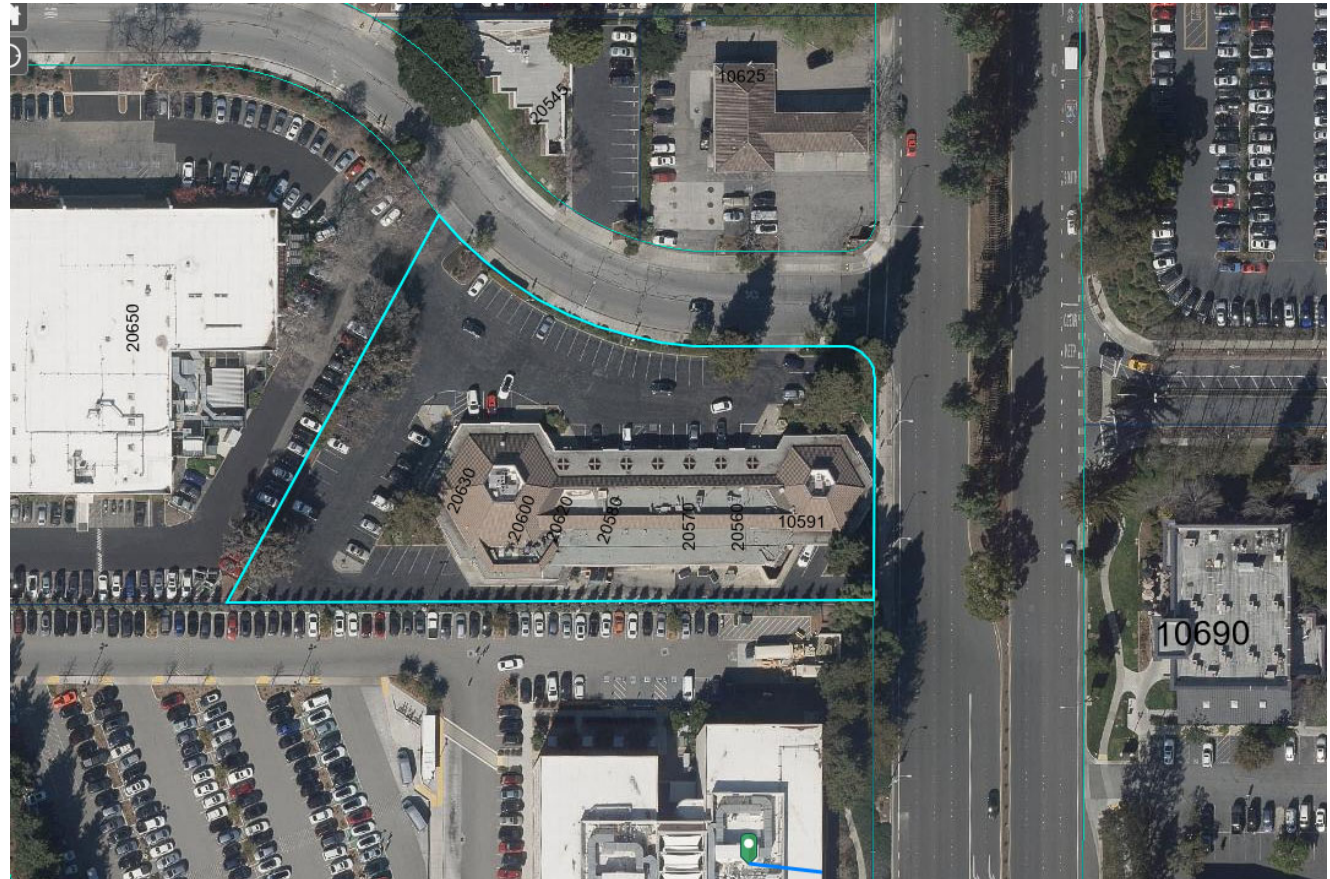
N. De Anza Blvd.
Conceptual Plan

N. De Anza Special Area

-25 Du/Acre
-45' heigh limit

Development Standards
Consistent with CMC for
Multi-family Projects

Landscape Setbacks with
N. De Anza Blvd.
Conceptual Plan



Site Description

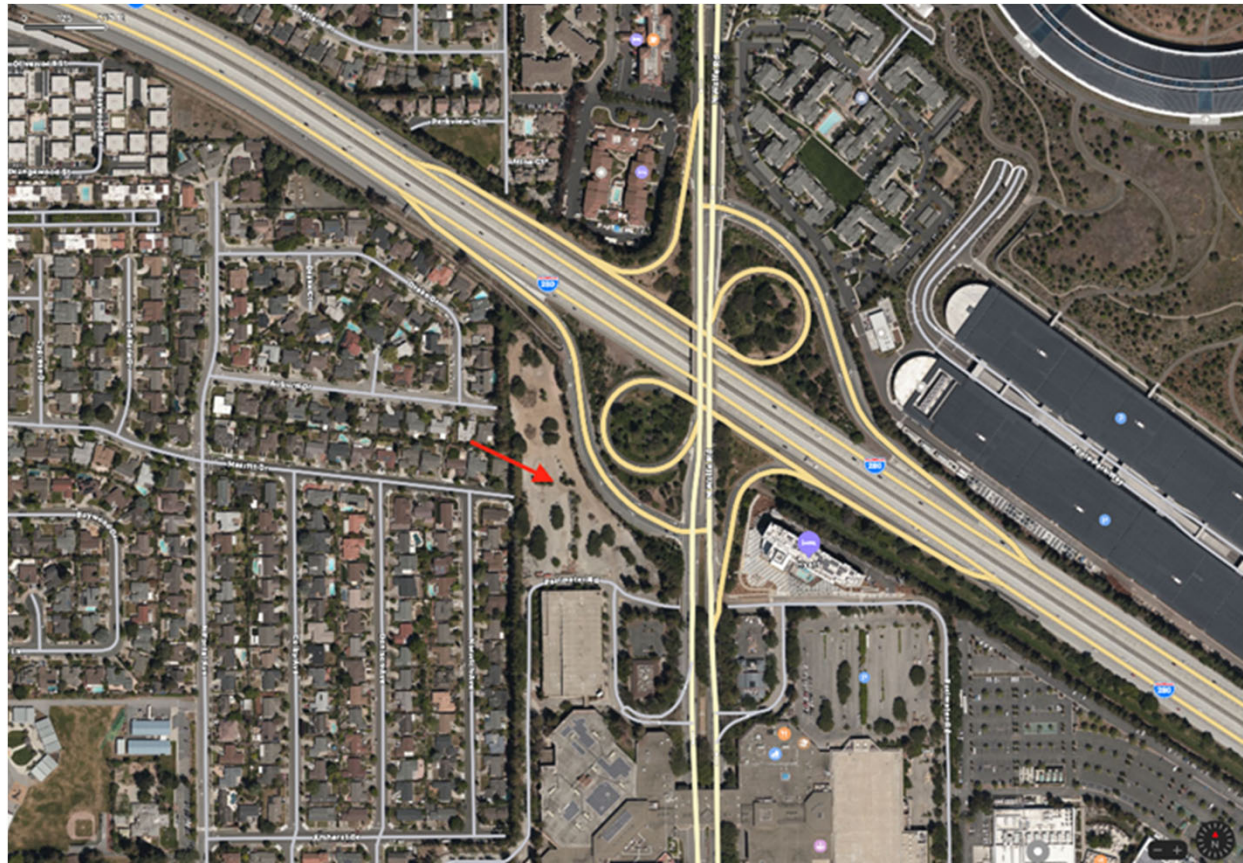
3

Land Use & Zoning

Regional Shopping

Commercial
General

Vallco Shopping
District Special
Area



CC 06-18-21

#2

Letter of Support
1972 Ridgeline
Easement

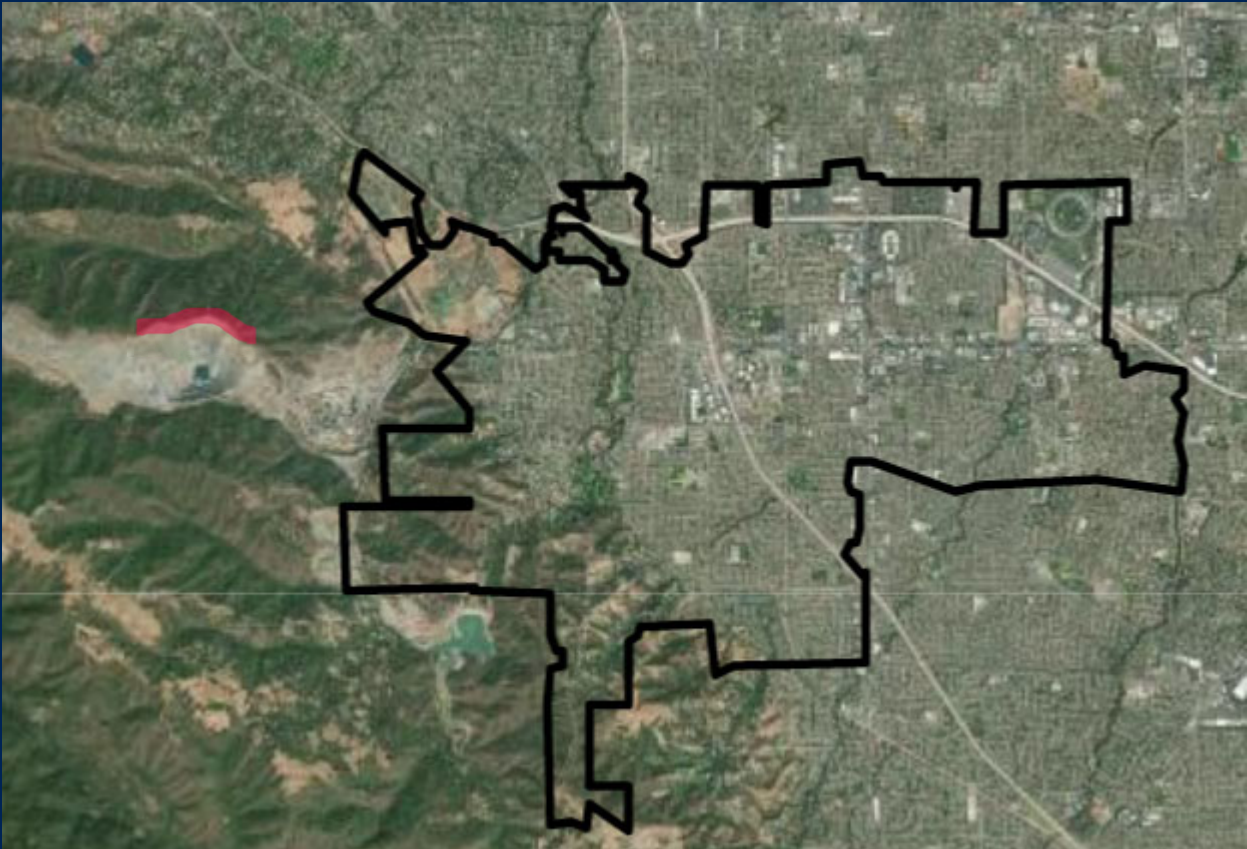
Presentation

Letter of Support Regarding 1972 Ridgeline Easement Enforcement Rights to Midpeninsula Regional Open Space District

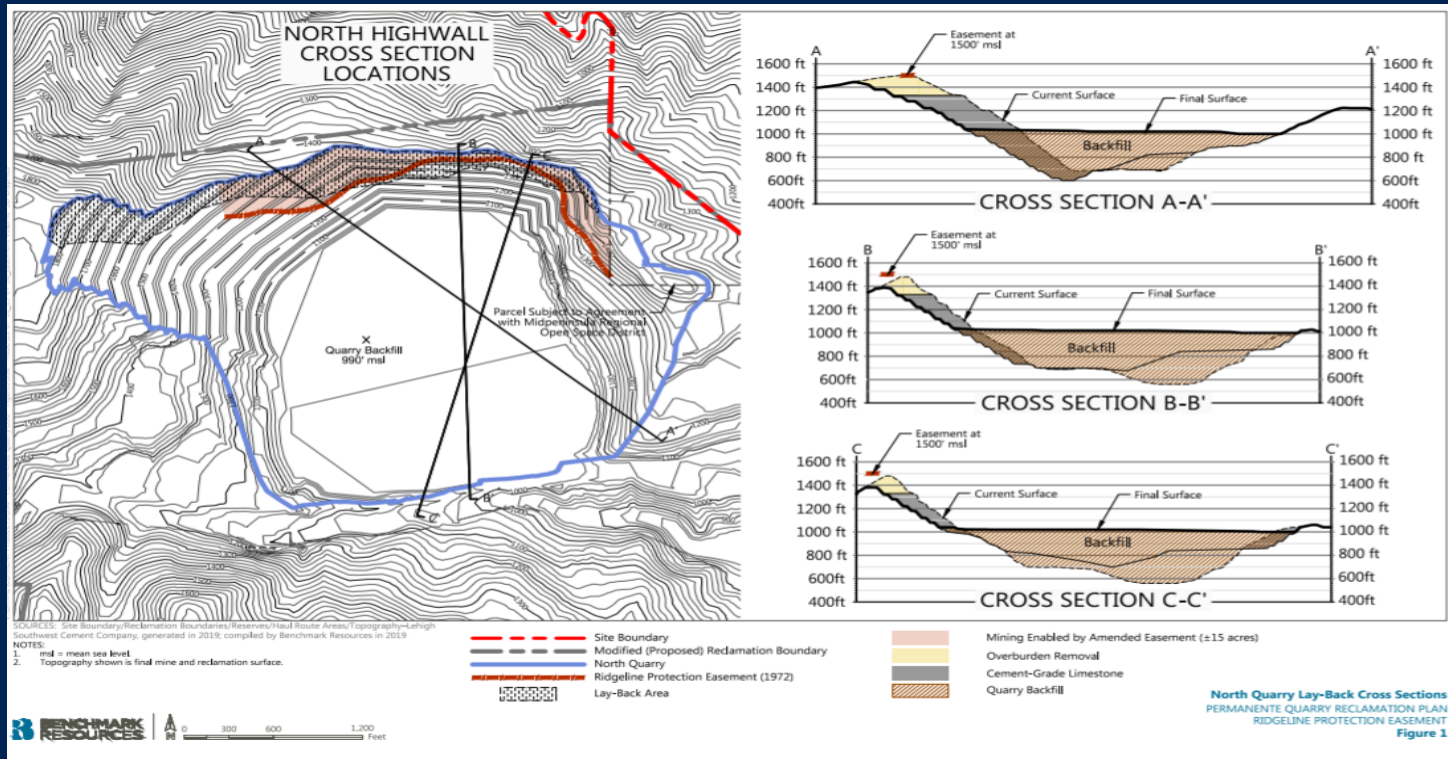
**Cupertino City Council
June 18, 2021**

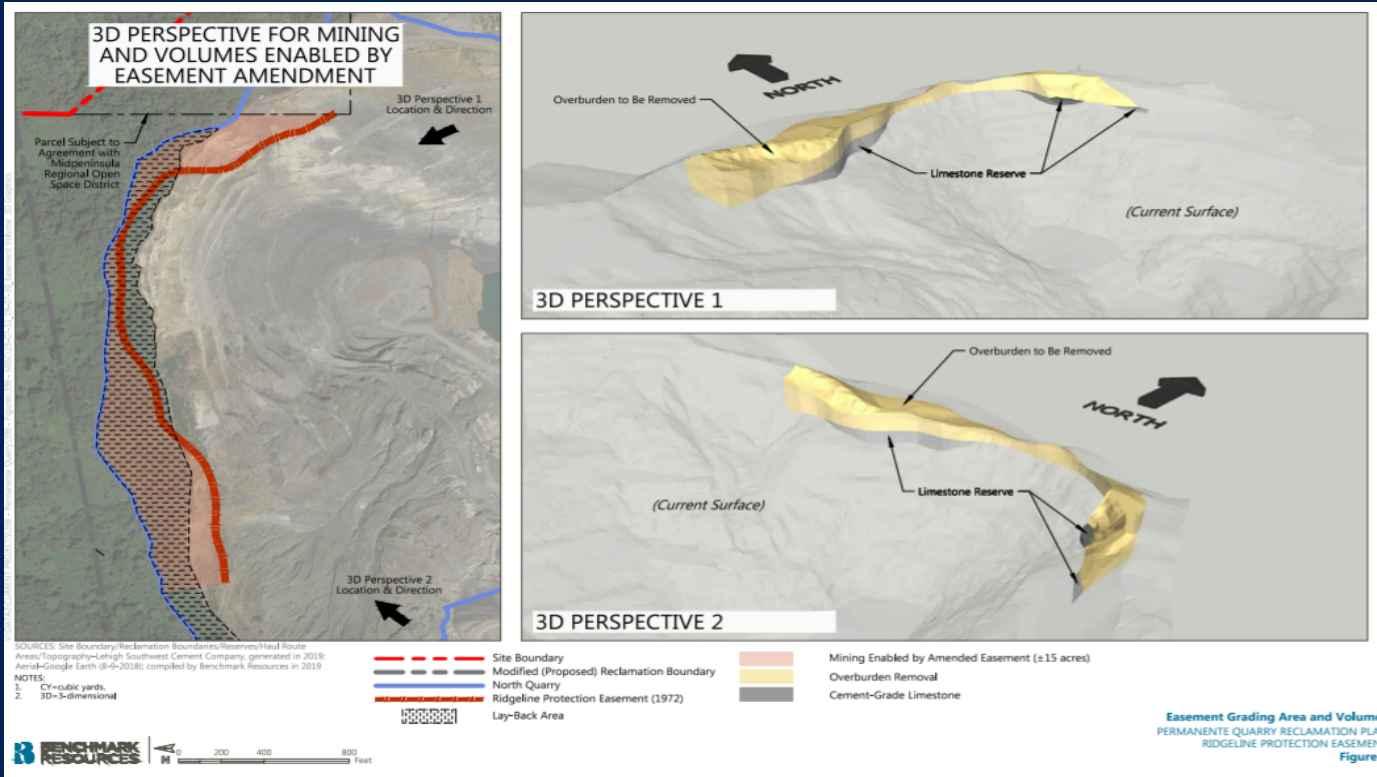


CUPERTINO









Letter of Support Regarding 1972 Ridgeline Easement Enforcement Rights to Midpeninsula Regional Open Space District

**Cupertino City Council
June 18, 2021**



CUPERTINO