

PRC Meeting

May 6, 2021

Presentations

Item 3

Satellite Community Garden Evaluation Data
and Potential Satellite Garden Locations



1



2

Satellite Community Garden History

- Fiscal Year 2019-2020 Capital Improvement Program
- \$300,000 allocation for the development of satellite community gardens.

3

Park Amenity Improvement Evaluation

COMMUNITY PARKS	CUPERTINO REGION	COMMISSIONER AVERAGE	PR STAFF AVERAGE	PW STAFF AVERAGE	OVERALL AVERAGE
Memorial Park	West	1.67	2.83	2.60	2.37
Stevens Creek Corridor Park	West	3.67	1.00	1.83	2.17

LARGE NEIGHBORHOOD PARKS	CUPERTINO REGION	COMMISSIONER AVERAGE	PR STAFF AVERAGE	PW STAFF AVERAGE	OVERALL AVERAGE
Creekside Park	East	3.33	1.67	2.67	2.56
Hoover Park	West	2.33	4.25	2.83	3.14
Jollyman Park	West	1.67	3.00	3.50	2.72
Linda Vista Park	West	1.00	2.67	1.80	1.82
Monta Vista Park & Rec Center	West	1.33	2.33	2.60	2.09
Portal Park	East	3.50	1.67	2.17	2.44
Varian Park	West	1.00	3.75	3.40	2.71
Wilson Park	East	4.67	2.67	2.67	3.33

SMALL NEIGHBORHOOD PARKS	CUPERTINO REGION	COMMISSIONER AVERAGE	PR STAFF AVERAGE	PW STAFF AVERAGE	OVERALL AVERAGE
Canyon Oak Park	West	1.00	1.00	1.00	1.00
Franco Park	West	1.00	1.00	1.00	1.00
Little Rancho Park	West	1.00	1.00	1.00	1.00
Somerset Park	West	2.67	2.67	2.60	2.64
Sterling Barnhart Park	East	1.00	1.00	1.00	1.00
Three Oaks Park	West	1.00	2.00	1.00	1.33

SPECIAL USE SITES	CUPERTINO REGION	COMMISSIONER AVERAGE	PR STAFF AVERAGE	PW STAFF AVERAGE	OVERALL AVERAGE
Civic Center Plaza	East	1.00	1.00	1.00	1.00
Library Field	East	2.33	1.50	2.33	2.06

4

Strategic Plan Park Amenity Improvement Evaluation Results

TOP THREE RATED PARKS	PRC AVERAGE	PR STAFF AVERAGE	PW STAFF AVERAGE	OVERALL AVERAGE
Wilson Park	4.67	2.67	2.67	3.33
Hoover Park	2.33	4.25	2.83	3.14
Jollyman Park	1.67	3.00	3.50	2.72

* Two additional City-owned sites were identified. Both are under long-term lease with the San Jose Water District.

5

Parks and Recreation System Master Plan

Develop a community garden implementation plan that identifies suitable sites and priorities for implementation. Add one or more community garden in an underutilized area or unneeded lawn area within a park, preferably in an area with higher density population

6

Recommended Action

Review the satellite community garden evaluation data and provide input on potential satellite garden locations.



PRC Meeting

May 6, 2021

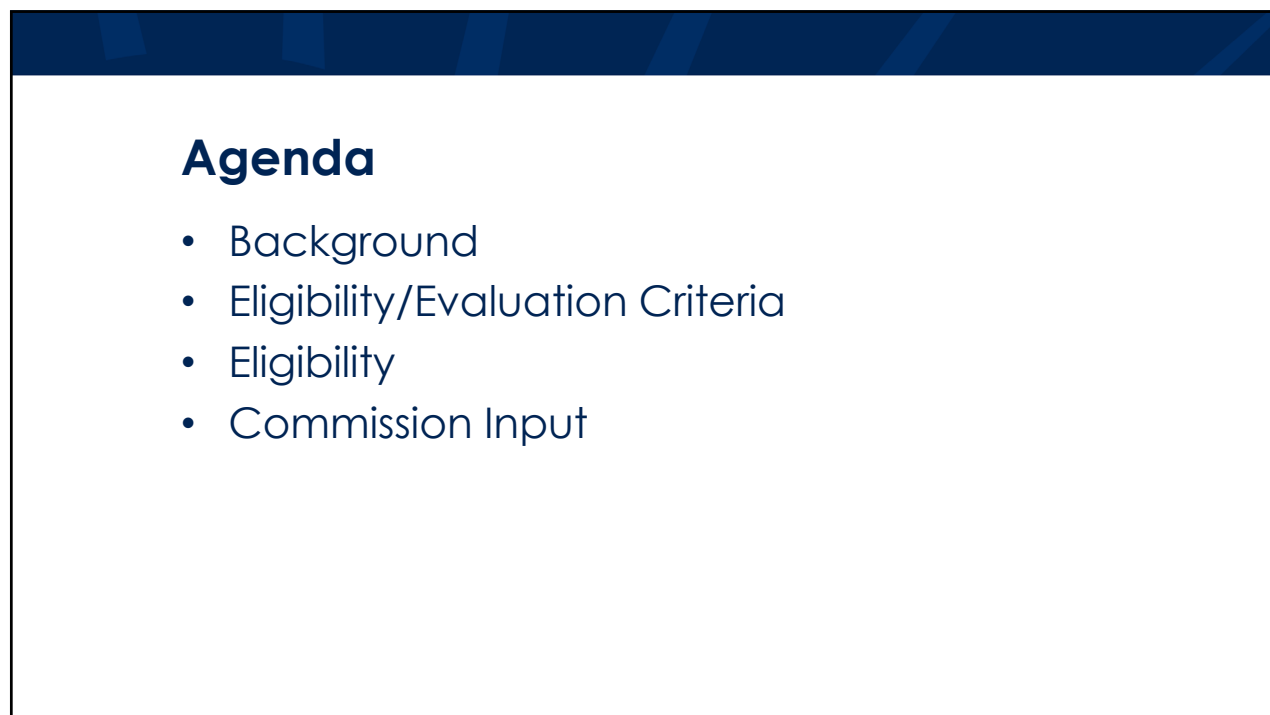
Presentations

Item 5

Community Funding Grant Policy



1



2

Background

- Current Community Funding Grant Policy approved by Council in December 2020
 - Earlier application submission date
 - Program funding range (\$70k to \$90k)
 - All applicant materials brought to Council
- Updated policy applied for Fiscal Year 2020-21 application process
 - Opportunities for clarification and improvement

3

Eligibility/Evaluation Criteria

Eligibility

Be made or sponsored by a 501(c)(3) non-profit organization with experienced members capable of implementing and managing the program/project/event

Identify how the funds will be used to benefit the Cupertino community

Be awarded only once per project

For specific needs, not ongoing operational costs

Have more than 75% of the requested funds allocated for direct service costs versus administrative costs

Be complete and submitted by the application deadline

Restrictions/Guidelines

An organization that is applying for multiple grants shall only submit one application

Proceeds generated from the funded activity may only be used for the conducted activity

Admission to or participation in the event must be "free of charge" to Cupertino residents unless stated in the application and approved by the Parks and Recreation Commission

Evaluation Criteria

Impact on and benefit to the Cupertino Community

Community Need for the program/project/event

Alignment with City Mission and values

Uniqueness of the program/project/event

Reasonable cost

Demonstrated effort to secure funding from other sources

Qualifications/experience of the organization/members

(New Applicants) Application impact

(Returning Applicants) Past performance and program efficacies

4

Eligibility

	Rebry Club of Cupertino		Epiphany Museum		West Valley Community Services		Santa Clara Valley Audubon Society		Silicon Valley Jewish Film Festival		Merita Vista High School Speech Boosters Inc.		Discovery Counseling Center		Diversi Academy of Percussion Music		Cunha		Chinese American Coalition for Compassionate Care	
Eligibility	Initial	Final	Initial	Final	Initial	Final	Initial	Final	Initial	Final	Initial	Final	Initial	Final	Initial	Final	Initial	Final	Initial	Final
Be made or sponsored by a 501(c)(3) non-profit organization with experienced members capable of implementing and managing the program/project/event	Yes	Yes	Yes	Yes	Yes	Yes	Yes	Yes	Yes	Yes	Yes	Yes	Yes	Yes	Yes	Yes	Yes	Yes	Yes	Yes
Identify how the funds will be used to benefit the Cupertino community	Yes	Yes	Yes	Yes	Yes	Yes	Yes	Yes	Yes	Yes	Yes	Yes	Yes	Yes	Yes	Yes	Yes	Yes	Yes	Yes
Be awarded only once per project	No	Yes	No	Yes	No	Yes	No	Yes	No	Yes	Yes	Yes	Yes	Yes	Yes	Yes	Yes	Yes	No	Yes
For specific needs, not on going, operational costs	Yes	Yes	Yes	Yes	Yes	Yes	Yes	Yes	Yes	Yes	Yes	Yes	No	Yes	Yes	Yes	Yes	Yes	No	Yes
Have more than 75% of the requested funds allocated for direct service costs versus administrative costs	Yes	Yes	Yes	Yes	Yes	Yes	Yes	Yes	Yes	Yes	No	Yes	No	Yes	No	Yes	No	Yes	No	Yes
Be complete and submitted by the application deadline	Yes	Yes	Yes	Yes	Yes	Yes	Yes	Yes	Yes	Yes	Yes	Yes	Yes	Yes	Yes	Yes	Yes	Yes	Yes	Yes
Restrictions/Guidelines	Initial	Final	Initial	Final	Initial	Final	Initial	Final	Initial	Final	Initial	Final	Initial	Final	Initial	Final	Initial	Final	Initial	Final
An organization that is applying for multiple grants shall only submit one application	NA	NA	NA	NA	NA	NA	NA	NA	NA	NA	NA	NA	NA	NA	NA	NA	NA	NA	NA	NA
Proceeds generated from the funded activity may only be used for the conducted activity	NA	NA	NA	NA	NA	NA	NA	NA	-	-	NA	NA	NA	NA	-	-	NA	NA	NA	NA
Admission to or participation in the event must be 'free of charge' to Cupertino residents unless stated in the application and approved by Parks and Recreation Commission	NA	NA	NA	NA	NA	NA	NA	NA	No	No	NA	NA	No	Yes	No	No	NA	NA	NA	NA

*Green notes a change in eligibility from the initial to final review. The seven applicants not listed did not have a change in eligibility.

5

Commission Input

- Reflect on the recently facilitated process
- Provide input
 - Eligibility
 - Evaluation Criteria
 - Restrictions/Guidelines

6

PRC Meeting

May 6, 2021

Presentations

Item 6

Rancho Rinconada Recreation and Park District
Community Outreach

Rancho Rinconada

Parks and Recreation Commission

May 6, 2021



CUPERTINO

1

Agenda

- Background
- RRRPD Community Meetings
- RRRPD Survey
- City RRRPD Project Webpage

2

Background

- Council Direction
 - Delay consideration of RRRPD acquisition, to allow for engagement in long-term planning for aquatics facilities in the City, and until RRRPD completes their strategic visioning and outreach and makes a recommendation.

3

RRRPD Community Meetings

- RRRPD has hosted two community meetings
- The RRRPD website notes video recordings of the meetings are anticipated to be posted to view

4

RRRPD Survey

- The District issued a survey to its residents, which their website notes was concluded on April 12
- Included seven questions
 - Programs/facilities
 - Acquisition of the District
 - Communication

5

City RRRPD Project Webpage

- cupertino.org/ranchorinconada
 - Background
 - Documents
 - Timeline
 - Link to RRRPD website

6

Questions

PRC Meeting

May 6, 2021

Presentations

Item 7

Use of Public Tennis Courts and Regulation of
Use



1

Public Tennis Court Outreach

- Contacted 11 cities
 - **Sunnyvale, Los Altos, Mountain View, Milpitas, Palo Alto**, San Jose, **Santa Clara, Campbell**, Log Gatos/Saratoga, Menlo Park, Morgan Hill
- Responses from 7 cities (bolded)

2

COVID impacts on public courts

- All responding cities are seeing a similar increase in public court use due to State and County guidelines authorizing tennis to be one of the few sports allowed for a majority of the pandemic

3

Responses to Customers

- Public courts are self monitored; issues can be directed to the Sheriffs via a non-emergency number
 - Sunnyvale, Los Altos, Milpitas, Palo Alto, Campbell
- Questa Park has a *staff shack* on site with part-time staffing
 - Mountain View
- Outside contractor oversees and manages courts
 - Santa Clara

4

Court Management in Other Cities

Court Management in Other Cities			
City	Racket order	Timing clocks	Notes:
Campbell		x	
Los Altos			Signage with rules, but no mechanism for court management
Los Gatos/Saratoga			Signage with rules, but no mechanism for court management
Menlo Park			Annual tennis keys are valid from January 15th through January 1st of the following year. The fee is \$63 for residents and \$127 for non-residents January-June, and \$42/\$84 July-December. Tennis courts are available for rental \$17 resident \$22 non-resident per court per hour. When possible, 50% of each court site will be accessible to the general public. The City of Menlo Park reserves the right to confiscate the tennis key of any user(s) not adhering to City Tennis Rules, Use Policies, or City Ordinances without refund. Additionally, any violation of use policies may result in the inability to either rent tennis courts or be issued a tennis key in the future. Lost keys replaced at key purchaser's expense.
Millpitas			Signage with rules, but no mechanism for court management
Morgan Hill			Tennis courts may be reserved or first come first serve. Signage with rules, but no mechanism for court management
Mountain View	x	x	Staff Shack on-site with part-time staff at Questa Park
Palo Alto			Signage with rules, but no mechanism for court management
San Jose			Rules say to use timing board, but no board currently exists
Santa Clara			Outside contractor oversees courts
Sunnyvale			Rules say to use timing board, but no board currently exists

5

Memorial, Varian, & Monta Vista Park

- Racket court order
- Timing system



Pictures from Memorial Park Tennis Courts

6

Recommended Action

Discuss the use of public tennis courts and regulation of use.

PRC Meeting

May 6, 2021

Presentations

Item 8

Monthly Update Reports



1

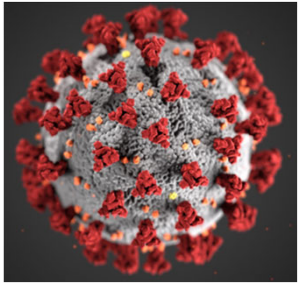
COVID Updates

May 19 – Free COVID testing

- Cupertino Senior Center
- 9:30 a.m. to 3:45 p.m.
- By appointment
- sccfreetest.org

Vaccine Information

- sccfreevax.org



2

COVID Updates

Orange Tier

- Gatherings
 - No household limits
 - Outdoor – maximum of 50 people
 - Indoor (discouraged) – limited to 25% of maximum capacity or 25 people, whichever is fewer

3

COVID Updates

Orange Tier

- No changes for youth sports groups, museums, indoor and outdoor activities, playgrounds, or picnic areas

4

COVID Updates - Programs	
Activities/Programs	Participation Numbers
Sports Center Tennis Courts	1791 Average participants per week
Blackberry Farm Golf Course	910 Average participants per week
Free Virtual Exercise Classes	236 Average participants per week
Fee-Based Virtual Exercise Classes	69 Currently enrolled
Lifetime Classes, Camps, Private Lessons, etc.	631 Currently enrolled

5

Council Updates
<p>May 4 Regular Meeting:</p> <ul style="list-style-type: none"> • Acceptance of Grant Funds for Full-Size Outdoor Basketball Court • Field Use Policy (Postponed from April 20) • Fee Schedule Updates (Postponed from April 20)

6

Council Updates

Field Use Policy

- Approved with the following amendments:
 - Proposed fees will be phased in over 2 years (50% in FY 21-22, 100% in FY 22-23)
 - Resident, nonprofit youth organizations – \$5/hour/field
 - Non-resident, nonprofit youth organizations – \$15/hour/field
 - Resident adult or resident for-profit youth organizations – \$25/hour/field
 - Non-resident adult or non-resident for-profit youth organizations —\$30/hour/field

7

Council Updates

Field Use Policy

- Approved with the following amendments:
 - Additional two Sundays are expanded from 10 a.m. to 4 p.m. and allows for tournaments
 - For Sunday use, each park site can only be reserved up to 10 times at most per year
 - Present a status update on the revised policy to City Council in a year

8

Council Updates

Fee Schedule Updates

- Effective May 5
 - Revised Community Garden fees
 - \$110 fee with \$55 PG&E CARES Program Discount
 - Refundable deposit of \$150 with \$75 PG&E CARES Program Discount

9

Council Updates

Fee Schedule Updates

- Effective July 1
 - Senior Center
 - Sports Center
 - Field Use
 - Outdoor Facilities
 - Blackberry Farm Golf Course

10

General Updates

Memorial Park - Playgrounds Restrooms Renovation Complete



11

General Updates

Jollyman Park - Restrooms Plumbing Work

- Estimated closure until Monday, May 10
- Port-o-potties and hand washing stations will be available while restrooms are closed

12

General Updates

Community Garden Sign



13

General Updates

Community Gardens



14

General Updates

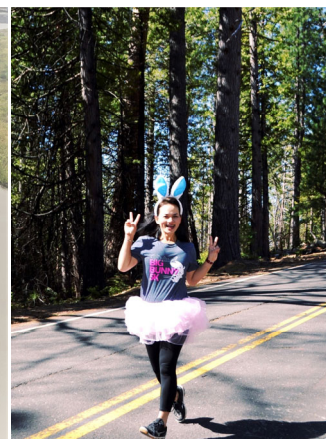
Virtual Big Bunny 5k – April 3 to 11



15

General Updates

Virtual Big Bunny 5k – April 3 to 11



16

General Updates

Blackberry Farm Pool

- Season begins June 15
- Reservations required
- blackberryfarm.org



Hours

Tuesday – Friday: 12 to 6 p.m.

Saturday – Sunday: 10 a.m. to 6 p.m.

17

Junipero Serra Trail Community Meetings

Thursday, May 13: 6 p.m. to 8 p.m.
- East Segment

Thursday, May 20: 6 p.m. to 8 p.m.
- Central Segment

Thursday, May 27: 6 p.m. to 8 p.m.
- City Wide

Webpage: Cupertino.org/jst

18

Budget and Dashboards

Budget – cupertino.org/budget

CIP Dashboard – cupertino.org/CIP

City Work Program Dashboard –
cupertino.org/cityworkprogram

19

Upcoming Mayor's Meetings

May 12 – Commissioner Tambe

June 9 – Vice Chair Xu

20

