

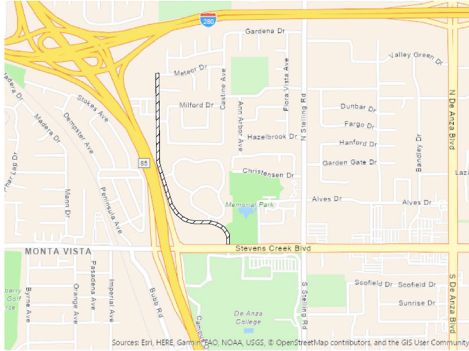
Mary Ave Protected Bikeway

Transportation Division

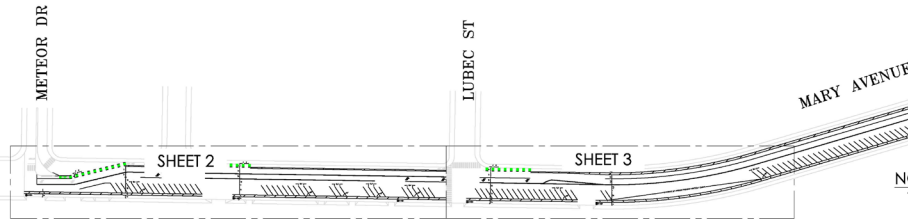


CUPERTINO

CITY OF CUPERTINO, CALIFORNIA
MARY AVE PROTECTED BIKE LANES
STRIPING PLANS FOR THE CORRIDOR OF MARY AVENUE



VICINITY MAP



NOTES:

1. REMOVE ALL EXISTING STRIPING IN CONFLICT WITH PROPOSED DESIGN. PROTECT IN PLACE EXISTING STRIPING WHERE INDICATED ON PLANS.
2. ALL STRIPING AND PAVEMENT MARKINGS SHALL BE THERMOPLASTIC
3. ALL STRIPING AND PAVEMENT MARKINGS ARE PER CALTRANS 2015 STANDARD PLANS, UNLESS OTHERWISE NOTED.
4. LANE DIMENSIONS ARE MEASURED FROM CENTER OF STRIPE TO CENTER OF STRIPE OR TO FACE OF CURB

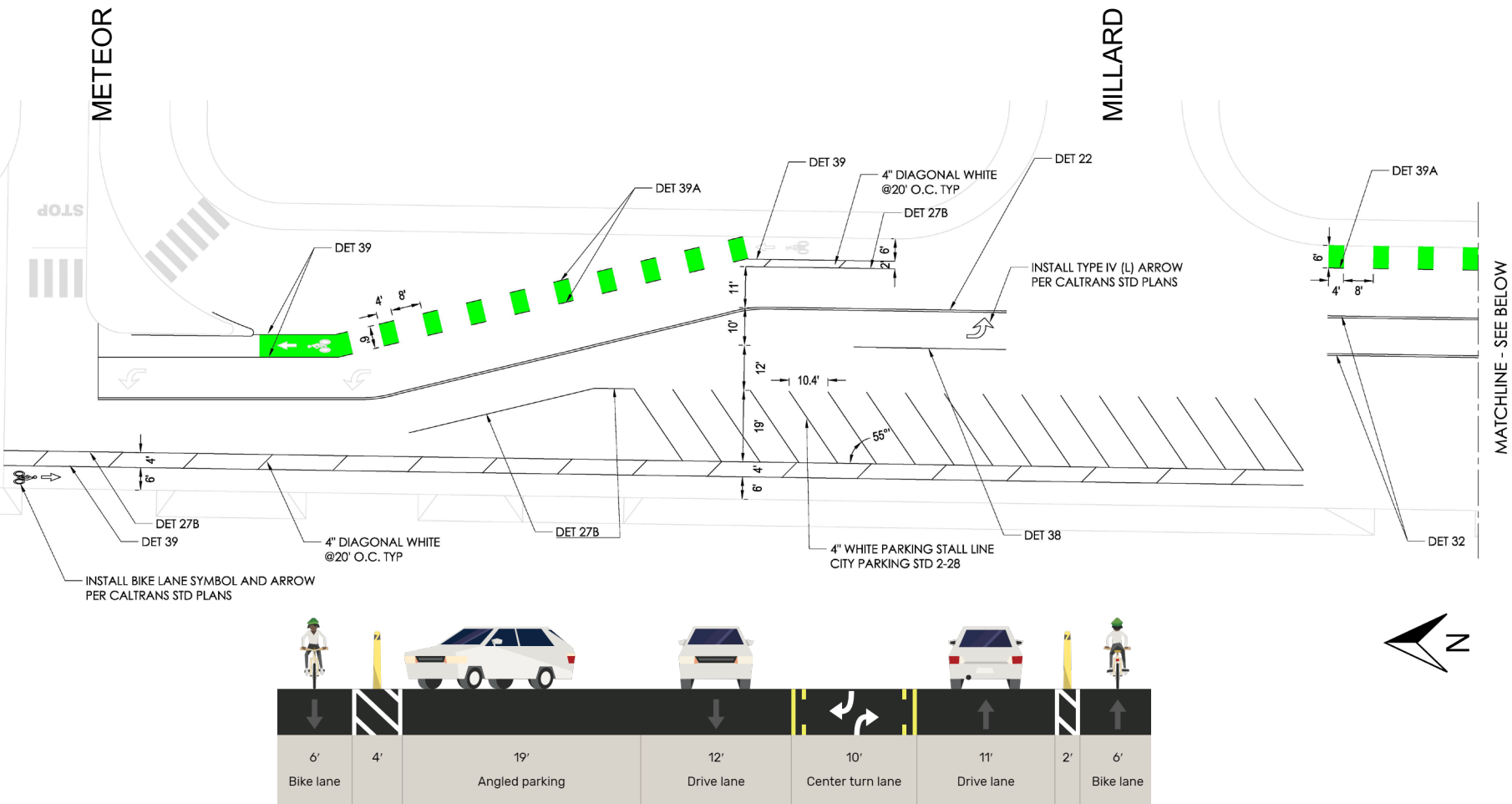
FINAL
100% PLANS

DESIGN: MA	CHECKED:	NO.	REVISION:	DATE:
DRAWN BY: MA	DATE:			
APPROVED BY:				

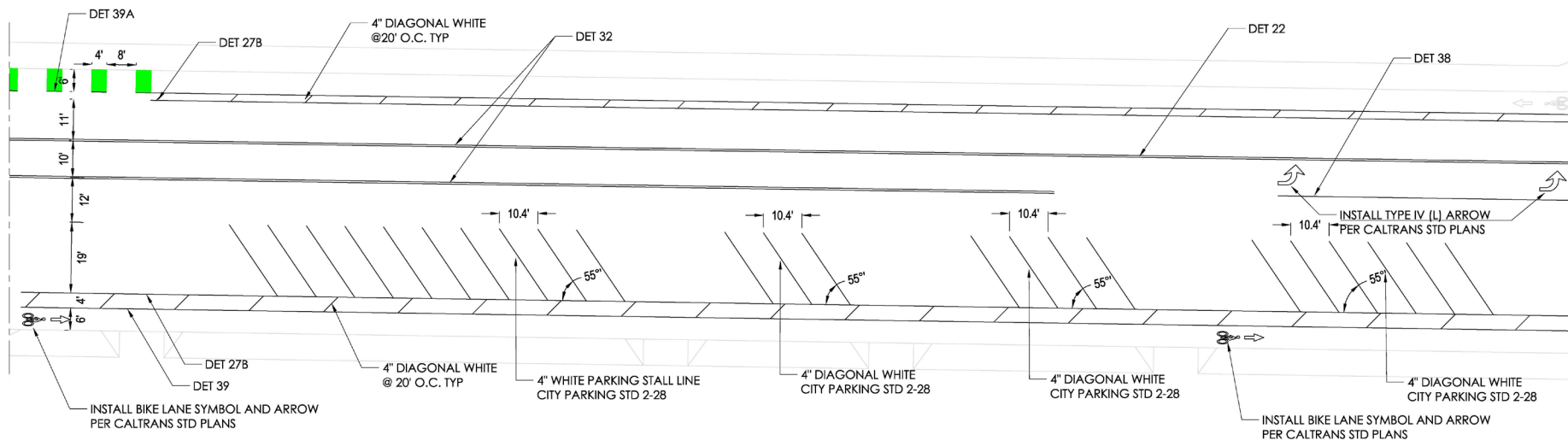
MARY AVE PROTECTED BIKE LANES
STRIPING LAYOUT PLAN

CITY OF CUPERTINO
DEPARTMENT OF PUBLIC WORKS

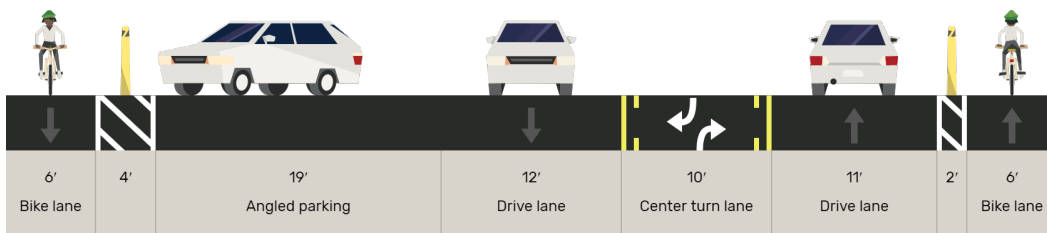
SCALE
1"=6'
T-1
1 OF 4 SHEETS



MATCHLINE - SEE ABOVE

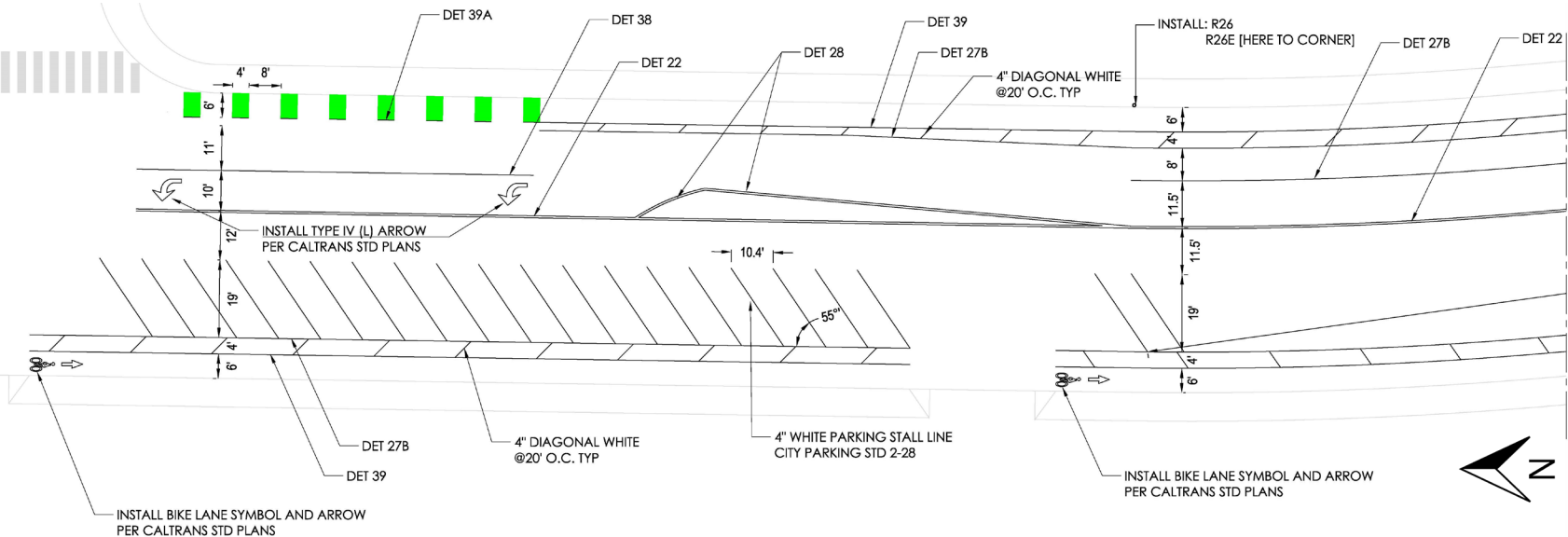


MATCHLINE - SEE SHEET 3

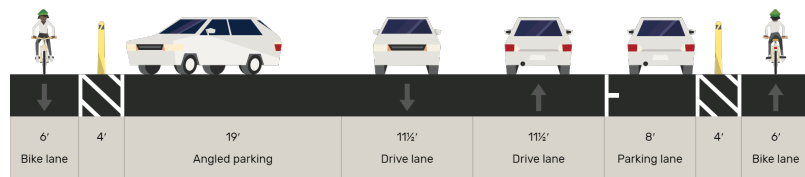
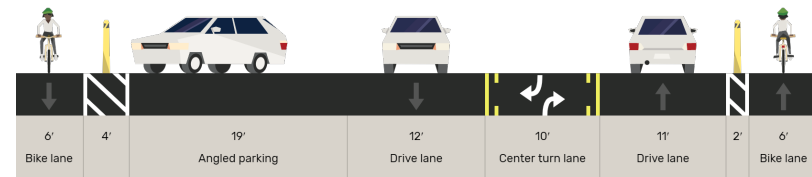


MATCHLINE - SEE SHEET 2

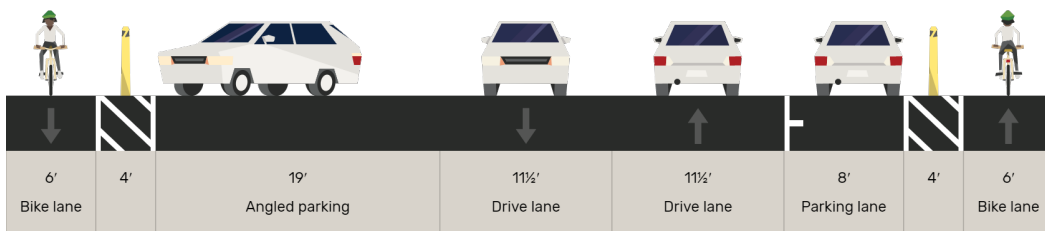
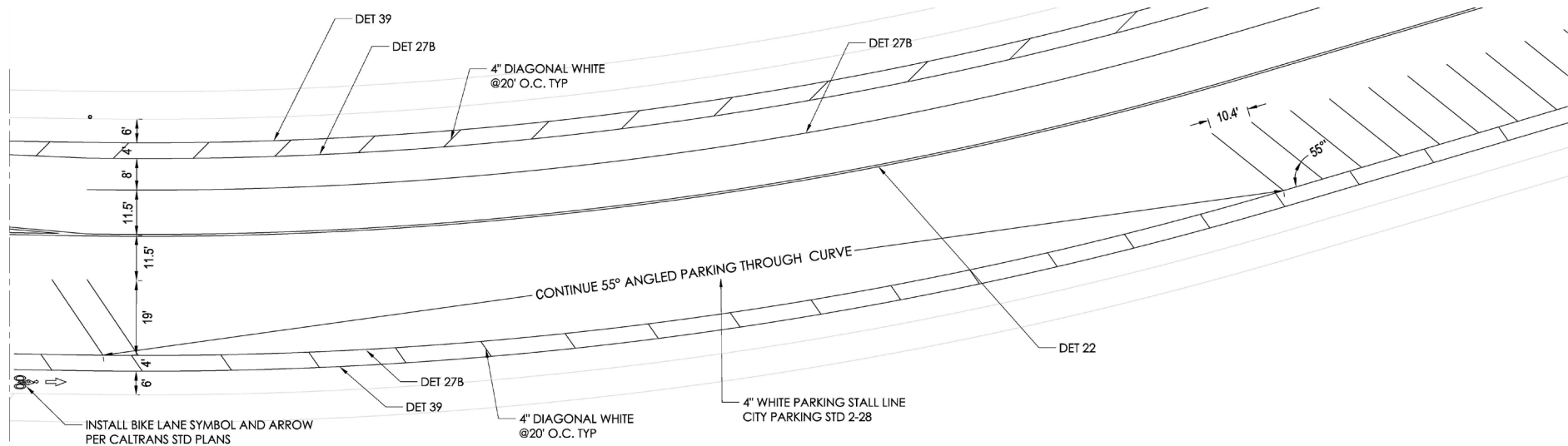
LUBEC

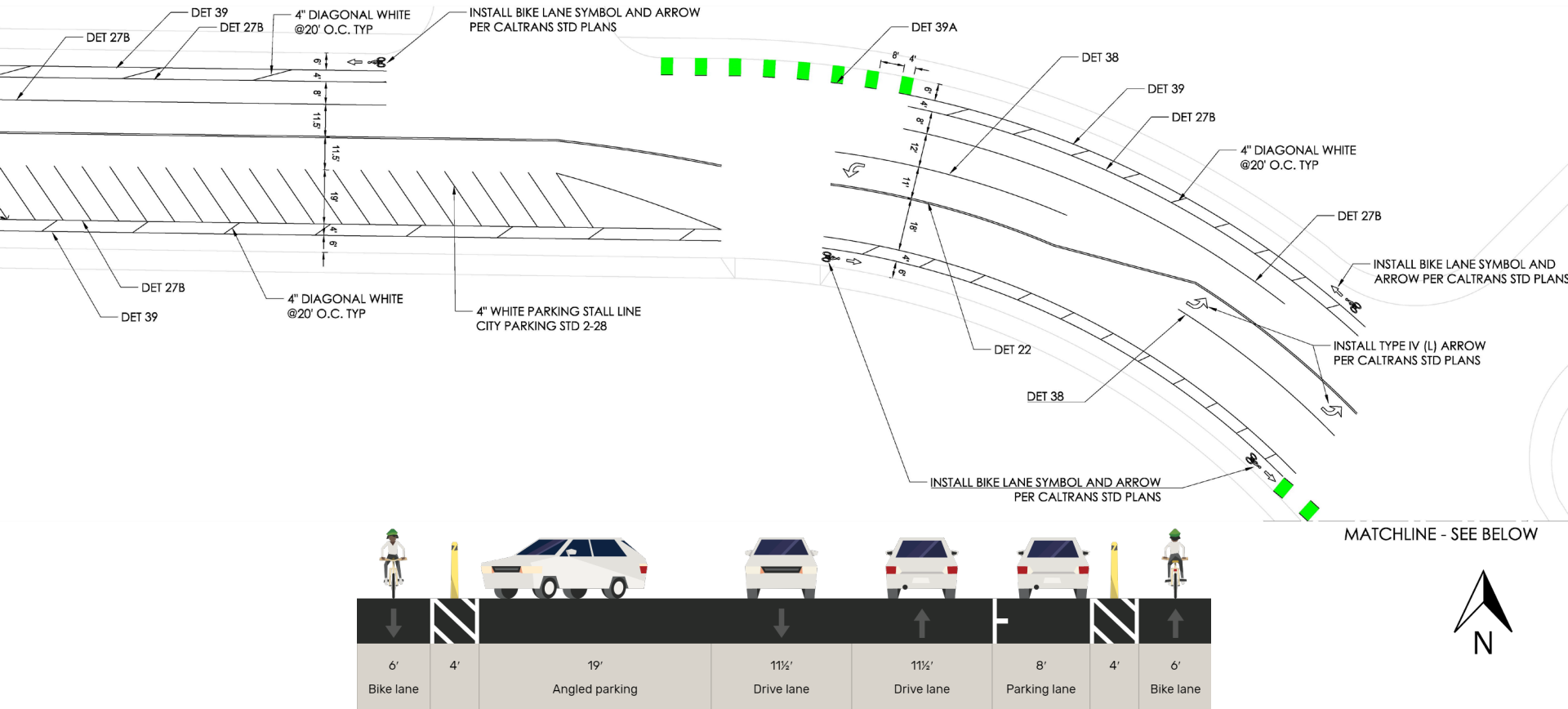


MATCHLINE - SEE BELOW



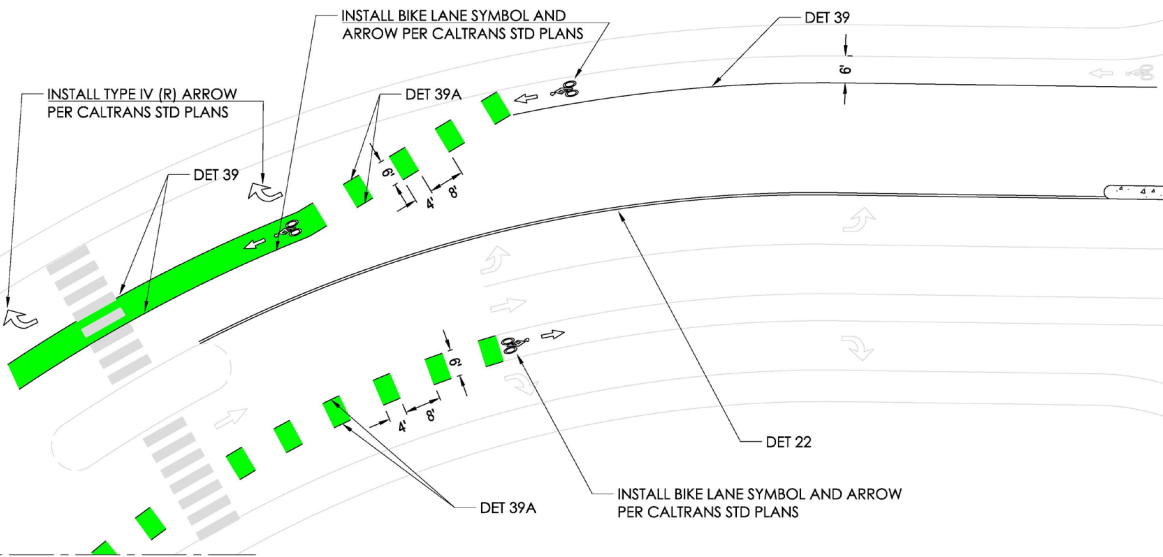
MATCHLINE - SEE ABOVE







MATCHLINE - SEE ABOVE



VTA BPAC Material

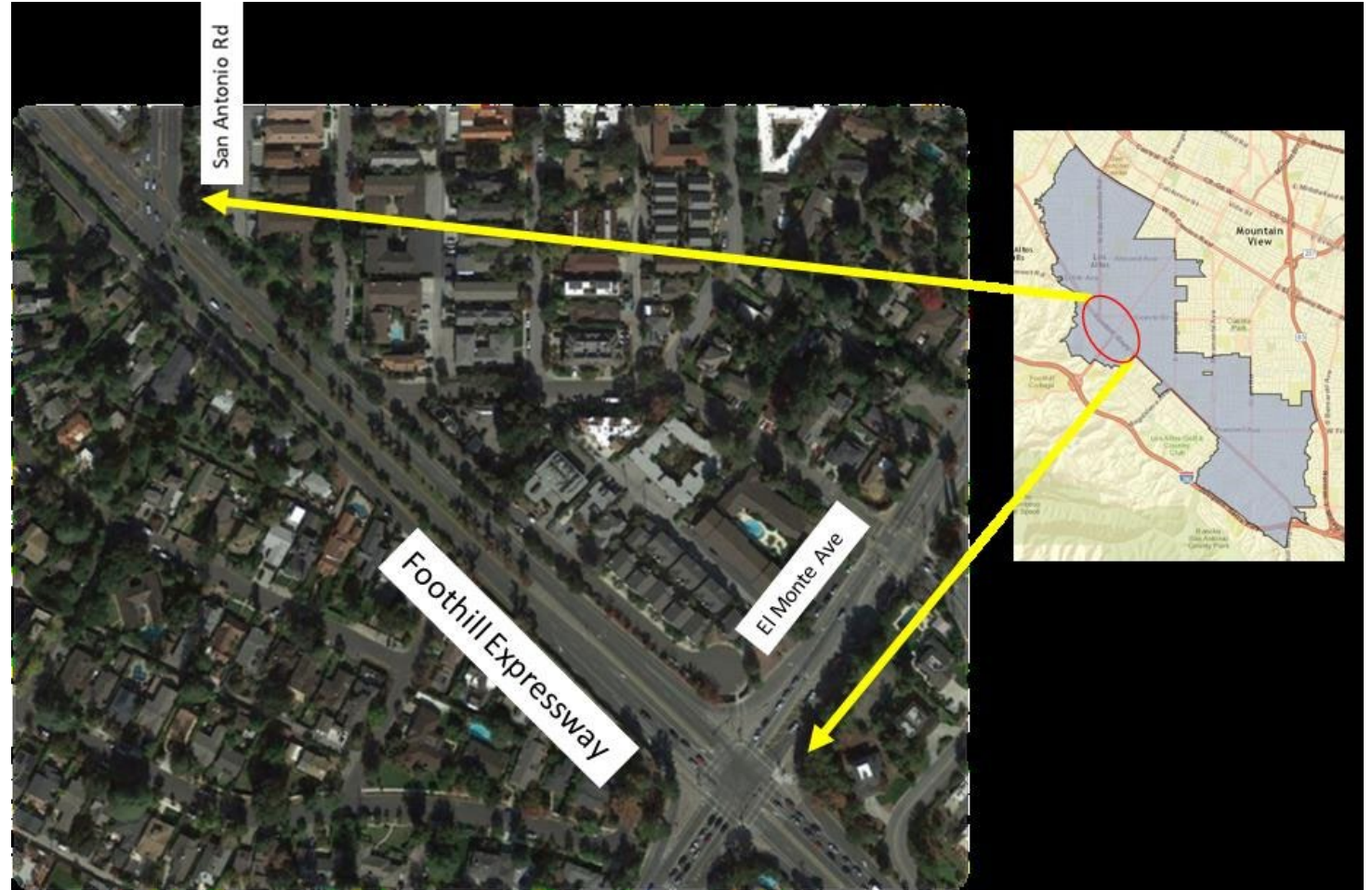
From Sept 9, 2020 meeting

Main VTA Agenda items

- Tamien and Blossom Hill Station Access (In San Jose)
 - Tamien – Light rail + CalTrain
 - Blossom Hill – Light Rail
 - Improving bicycle and pedestrian access
- County roads update
 - Foothill expressway
 - Work with widening bike lanes and squaring off corners is ongoing (between El Monte Avenue and San Antonio Road?).
- Manilla Ave Bike/Ped path – Sunnyvale
 - Google funded and lead bike/ped path design

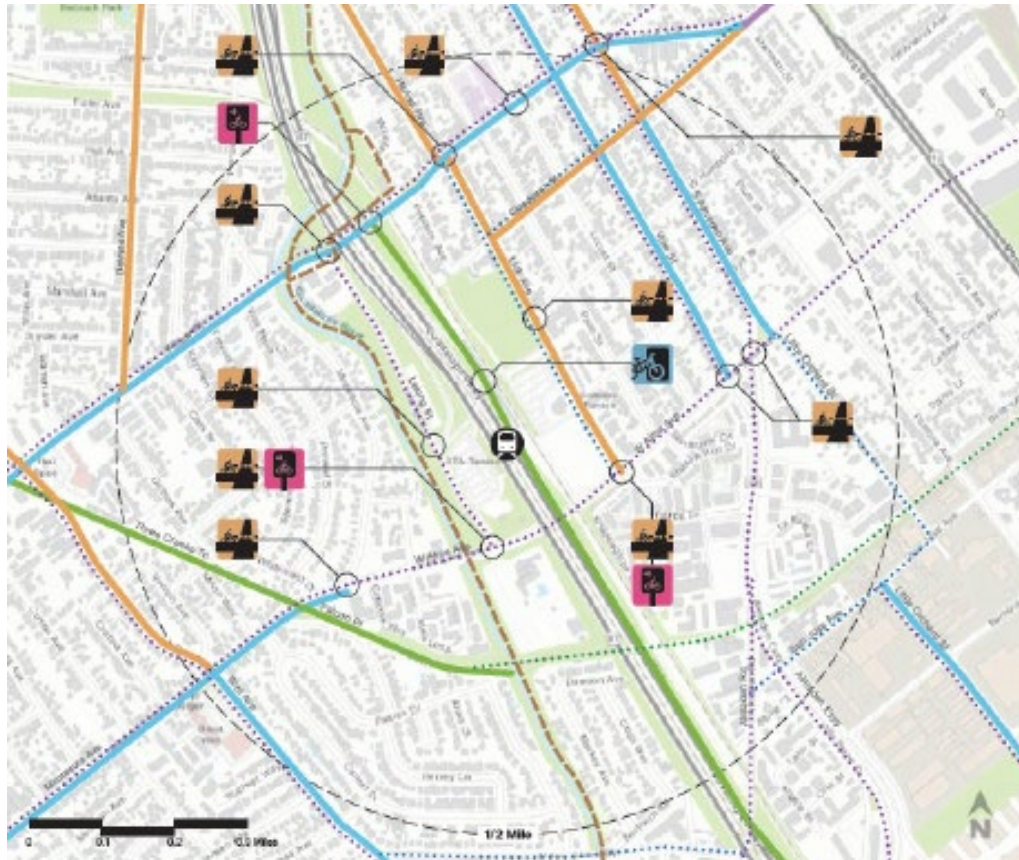
Foothill Expressway Improvements in Progress

- Adding through lane.
- Adding a right turn lane.
- Squaring corners.
- Road widening. (Includes some widening of shoulders).



Tamien Station

Bicycle improvements



Pedestrian improvements



Blossom Hill Station

Bicycle improvements



Pedestrian improvements



Manila Ave Bike/Ped path – Sunnyvale

Manila Ave & W Moffett Park Dr Bikeway Project Vicinity

Google
funded and
organized

Multijurisdictional
project

