



SANTA CLARA COUNTY

## COMMUNITY PLAN TO END HOMELESSNESS

2020–2025



# SANTA CLARA COUNTY COMMUNITY PLAN TO END HOMELESSNESS

## PRESENTERS

Ray Bramson - Chief Operating Officer,  
Destination: Home

Kathryn Kaminski - Acting Deputy  
Director, County of Santa Clara Office of  
Supportive Housing

# ABOUT THE CONTINUUM OF CARE

- Broad group of stakeholders dedicated to ending and preventing homelessness
- Ensure a community-wide implementation of efforts & programmatic and systemic effectiveness



Santa Clara County Continuum of Care



## Supportive Housing System Progress 2015-2019

Thanks to the collective efforts of partners throughout the community, over the past five years, we have done the following:

Helped **8,884 households** resolve their homelessness,

representing  
**14,132 people**



**Doubled** the number of supportive housing units in Santa Clara County



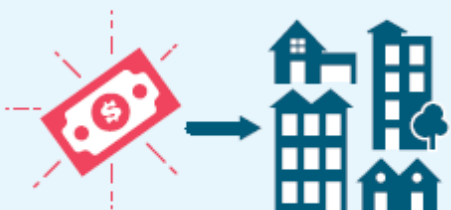
**Doubled** our temporary housing and emergency shelter capacity



Launched a new homelessness prevention system that now serves about **1,000 households annually**



Led a community-wide campaign that has successfully housed more than **1,600 veterans** and engaged nearly **800 private landlords** in the effort



Voters approved **\$950 million** to develop affordable housing through the 2016 Measure A Affordable Housing Bond and raised another **\$100 million** in private contributions to support the implementation of the community plan

# PROGRESS TO DATE

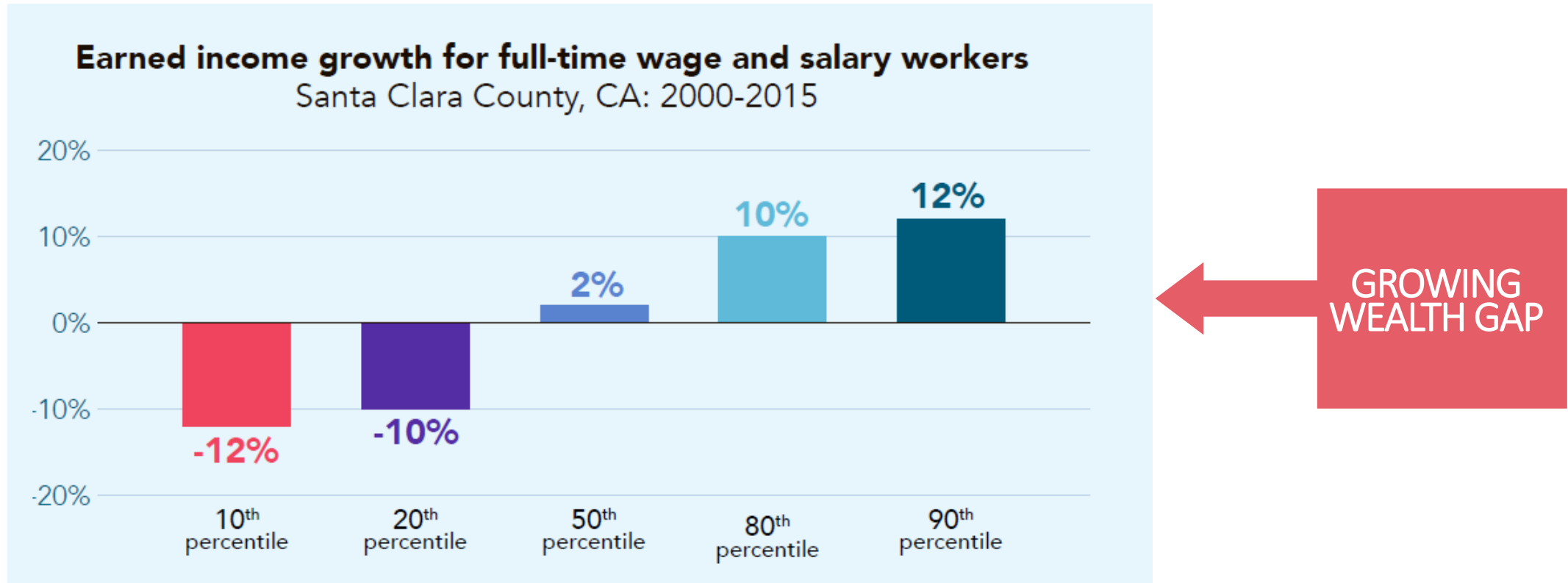
# HOMELESSNESS CONTINUES TO GROW

---



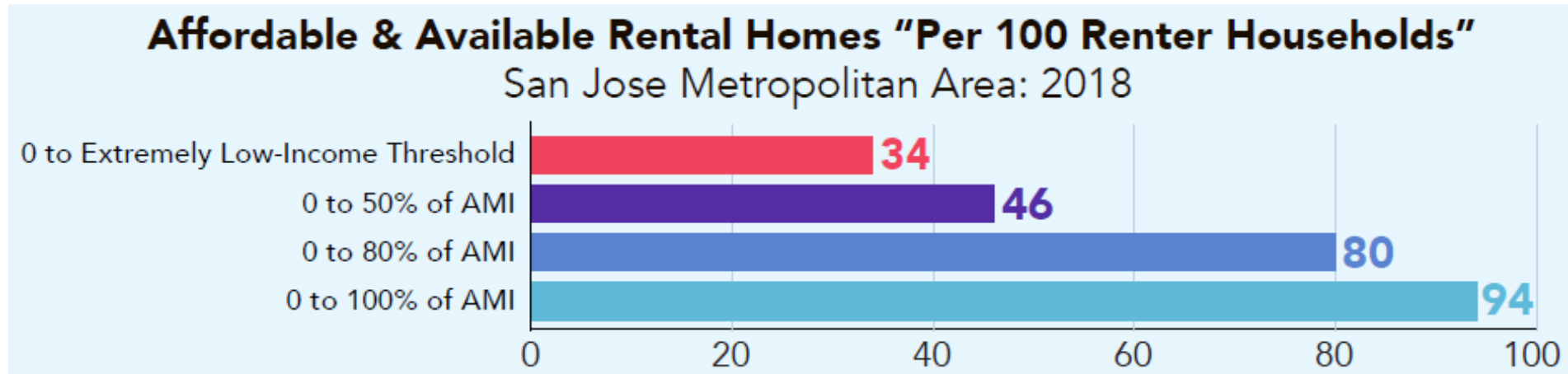
For every homeless family or individual connected to housing in the county, two to three more are experiencing homelessness for the very first time

# SYSTEMIC FACTORS DRIVING HOMELESSNESS



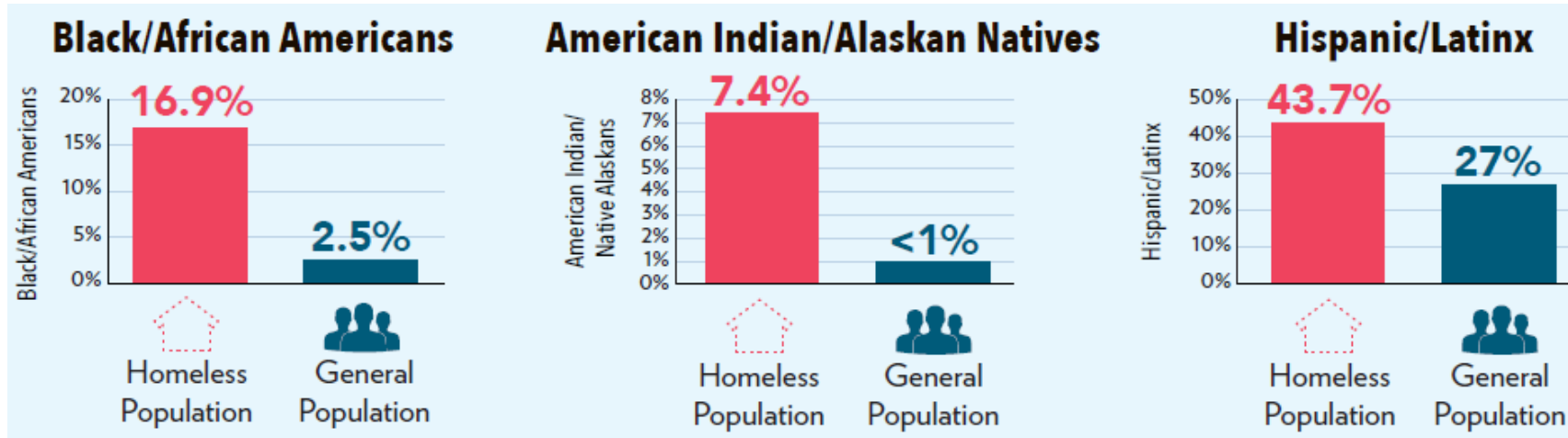
# SYSTEMIC FACTORS DRIVING HOMELESSNESS

---



↑  
**SHORTAGE OF  
AFFORDABLE  
HOMES**

# SYSTEMIC FACTORS DRIVING HOMELESSNESS



**RACIAL  
DISPARITIES IN  
HOMELESSNESS**



# 2020-2025 COMMUNITY PLAN TO END HOMELESSNESS

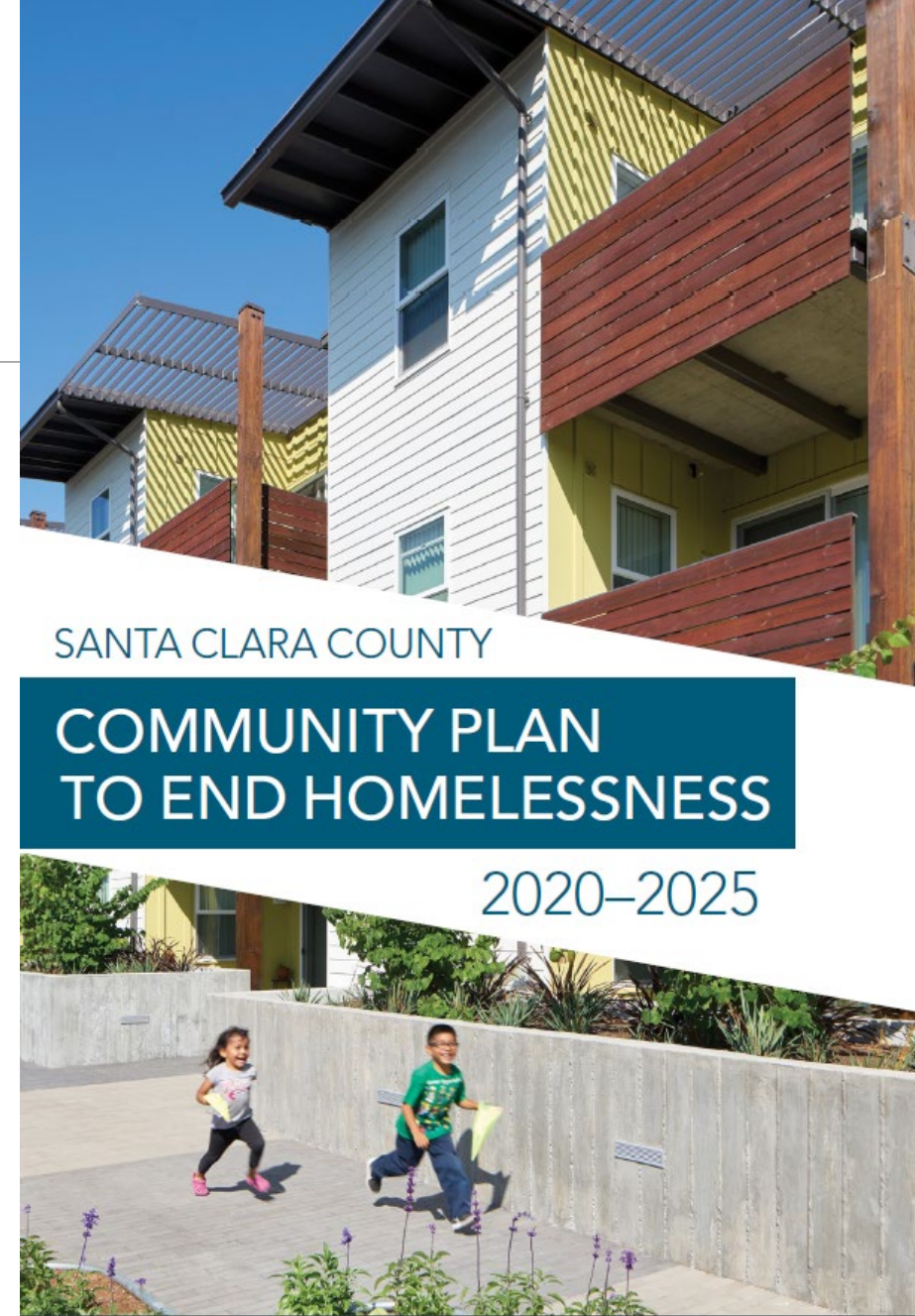
## GUIDING VALUES

As we implement the strategies in this plan, we will **raise the voices of people with lived experience** and **share power** with our unhoused and recently-housed neighbors.

We will focus on policies and programs that reduce racial inequity, in an effort to **reverse the disproportionately high rates of people of color who are unhoused**.

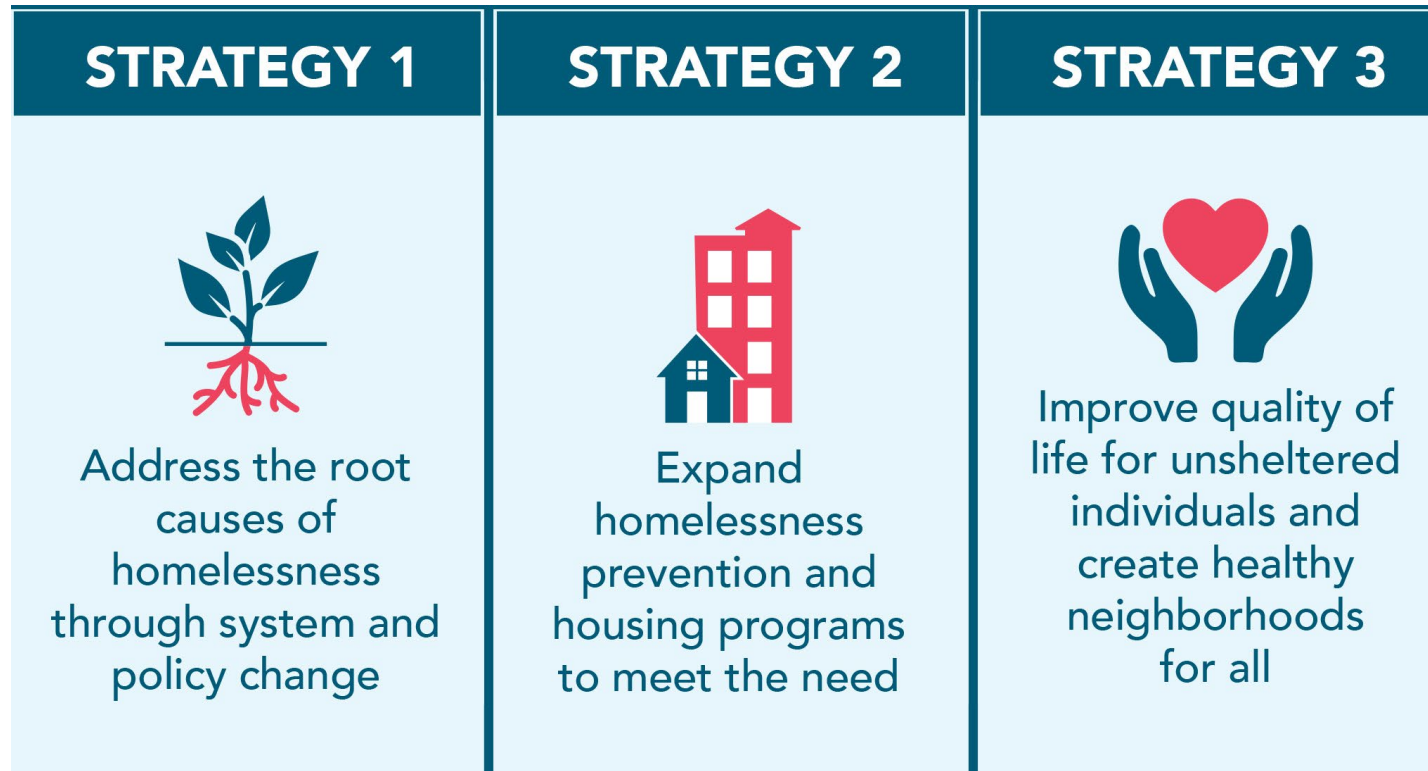
## THIS PLAN IS BUILT ON:

- ✓ Input from more than 8,000 community members
- ✓ Subject-matter expert convenings
- ✓ Voices of lived experience
- ✓ Evidence-based practices & data



# PLAN BUILT ON 3 CORE STRATEGIES

---



# STRATEGY 1

## ADDRESS ROOT CAUSES

---



1. Ensure that people accessing safety net services have the support they need to obtain and maintain housing.
2. Ensure that people involved in the criminal justice system do not become homeless.
3. Create the conditions to develop enough affordable housing to meet the need in our community.
4. Protect residents from evictions, displacement, and housing discrimination.
5. Ensure all residents who are able to work have access to living wage employment.
6. Expand public and private sector support for ending and preventing homelessness.

# STRATEGY 2

## EXPAND PROGRAMS

---



1. Increase the capacity of supportive housing programs for people experiencing homelessness.
  - 7,000 people housed in Permanent Supportive Housing programs
  - 10,000 people housed through Rapid Rehousing programs
  - 3,000 people housed through Housing Problem Solving
2. Provide a broad range of supports to prevent homelessness.
  - Expand the Homelessness Prevention System to prevent homelessness for an additional 7,000 households who are at risk by providing targeted financial assistance and supportive services.
3. Create a state-of-the-art supportive housing system.
  - Center the voices of people who have lived experience of homelessness, especially people of color, in the policy and program design decisions of the supportive housing system.
  - Invest in professional development and competitive pay to attract and retain a highly qualified workforce of homeless service provider staff.

# STRATEGY 3

## IMPROVE QUALITY OF LIFE

---



1. Double the number of year-round temporary housing beds and offer a variety of welcoming temporary housing options throughout the county.
2. Increase street outreach, hygiene services, and transportation options to match the needs of unsheltered residents.
  - Increase access to basic hygiene resources, including bathrooms, showers, and laundry
3. Increase mental health and substance use services.
  - Increase the number of mobile crisis teams with clinical staff, and expand their hours, to support individuals experiencing severe mental health and substance use crises.
4. Engage a cross-section of community partners to address the needs of unsheltered residents.
5. Ensure that community spaces are safe and welcoming for housed and unhoused residents.



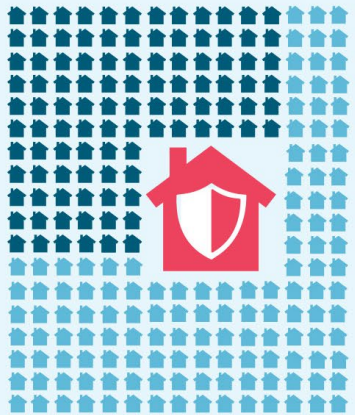
## By 2025, we will:



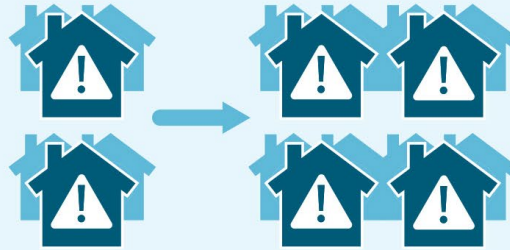
Achieve a **30% reduction** in annual inflow of people becoming homeless\*



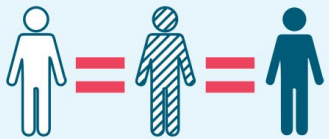
House **20,000 people** through the supportive housing system



Expand the Homelessness Prevention System and other early interventions to serve **2,500 people per year**



**Double** temporary housing and shelter capacity to reduce the number of people sleeping outside



Address the **racial inequities present** among unhoused people and families and track progress toward reducing disparities

# AGGRESSIVE TARGETS

# WORK ALREADY UNDERWAY

---

- ✓ Created centralized shelter hotline which has connected over **2,900 households** into congregate and non-congregate shelter
- ✓ Destination: Home and Sacred Heart Community Service have distributed more than \$21.8 million in direct financial assistance to approximately **11,700 families** in Santa Clara County via a 70-agency partnership
- ✓ Distributed over **100,000 pieces of PPE**, and provided mobile shower and sanitation services for individuals living in encampments
- ✓ Connected **1,168 homeless households** to permanent housing
- ✓ Three emergency interim housing communities in development by CSJ to provide interim housing for over **300 homeless households**

# Next Steps

---



ENDORSEMENT TODAY



SHARE & PROMOTE THE PLAN

<https://bit.ly/CommPlan2020>



IMPLEMENTATION



REPORT ON PROGRESS





SANTA CLARA COUNTY

## COMMUNITY PLAN TO END HOMELESSNESS

2020–2025



# Questions/Comments

---