

# All-Inclusive Playground Opportunity

City Council  
May 13, 2019



CUPERTINO

## Action This Evening

- Confirm implementation of an all-inclusive playground at Jollyman Park. If so:
- Execute funding agreement with County of Santa Clara to accept \$1,448,201 in grant funding & proceed with implementation of an all-inclusive playground at Jollyman Park

# All-Inclusive Playgrounds

- Provide recreational play for people of all ages & abilities
- Disabilities are not just physical but also mental, emotional, & developmental
- Nearly 1/5 of population has a physical, sensory or intellectual disability (per National Organization on Disability)
- A place for active & passive play with features that can be shared by all, side to side
- People with challenges can freely interact with family members & friends
- Exceeds ADA standards

# **All-Inclusive Playground Feasibility Study 2018, Primary Tasks**

- Identify & evaluate potential park sites
- Develop sample conceptual plan and construction estimate
- Provide materials to support grant applications





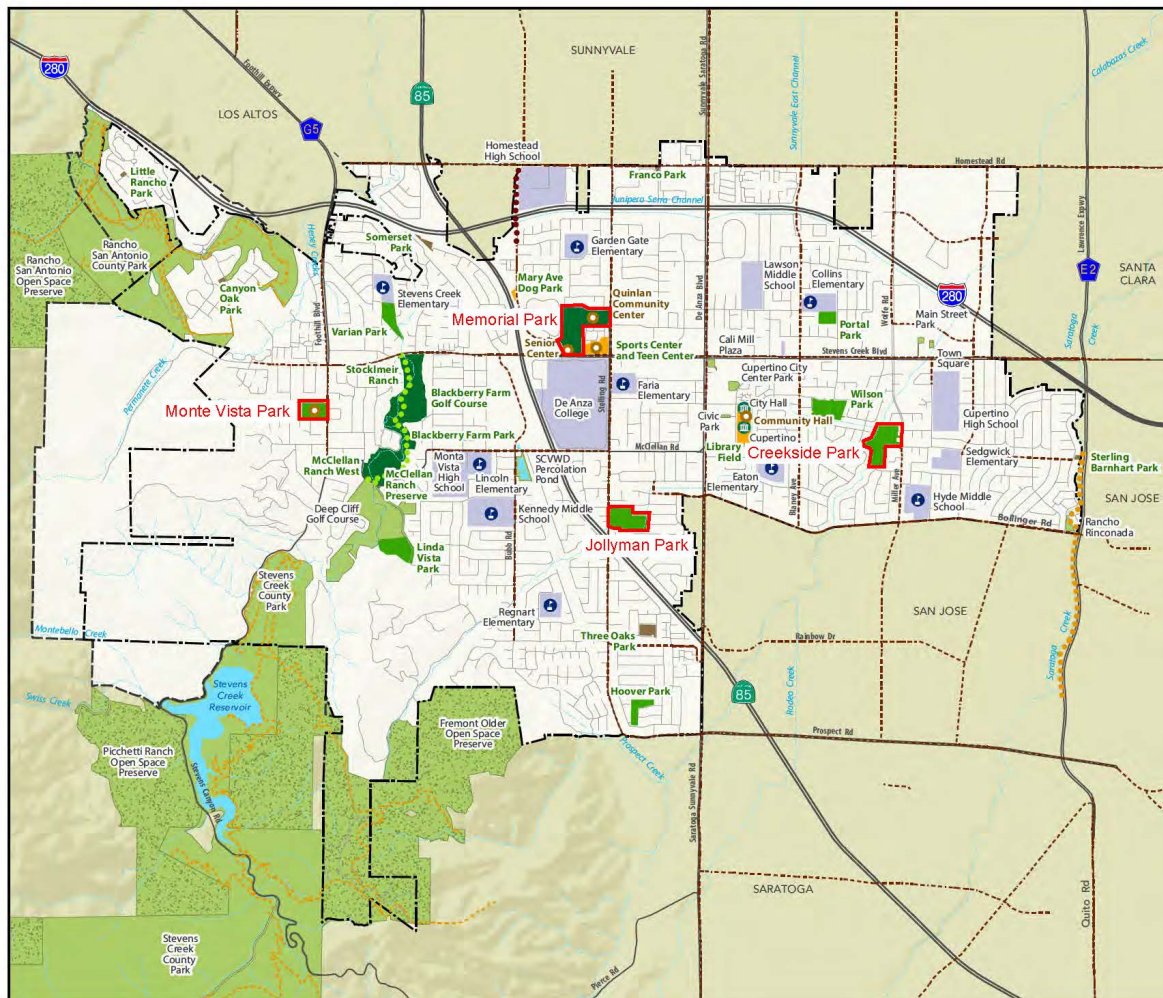
## Site Selection Criteria

- Within city limits
- Proximity to arterial or collector streets
- Space available
- Topography (can be made ADA-compliant)
- Inviting for users of all ages & abilities
- Park uses appropriate for inclusive play area



## Sites Evaluated

- Memorial Park
- Jollyman Park
- Creekside Park
- Monta Vista Park



## EXISTING PARKS AND RECREATION FACILITIES MAP

### Selected Feasibility Study Parks

#### Park and Recreation Facilities




##### Cupertino Parks and Recreation Facilities

-  Community Parks
-  Large Neighborhood Parks
-  Small Neighborhood Parks
-  Special Use Sites

##### Other Recreation Resources

-  Park & Recreation Resources
-  Open Space Preserves
-  Schools and Colleges

#### Trail Corridors

-  Don Burnett Bicycle-Pedestrian Bridge & Homestead Rd. to Mary Ave. Trail
-  Stevens Creek Trail
-  Saratoga Creek Trail

#### Trails and Bike Facilities

-  Park/Open Space Trails
-  Class II Bike Lane

#### Recreation Centers/Fields

-  Recreation Centers/Facilities
-  Other Facilities
-  School Sport Fields Managed by City

#### Base Map Features

-  Cupertino City Boundary
-  Cupertino Sphere of Influence \*
-  Creeks and Channels
-  Water Bodies



# Conclusions

Sites were ranked using 38 criteria (see Att. A)

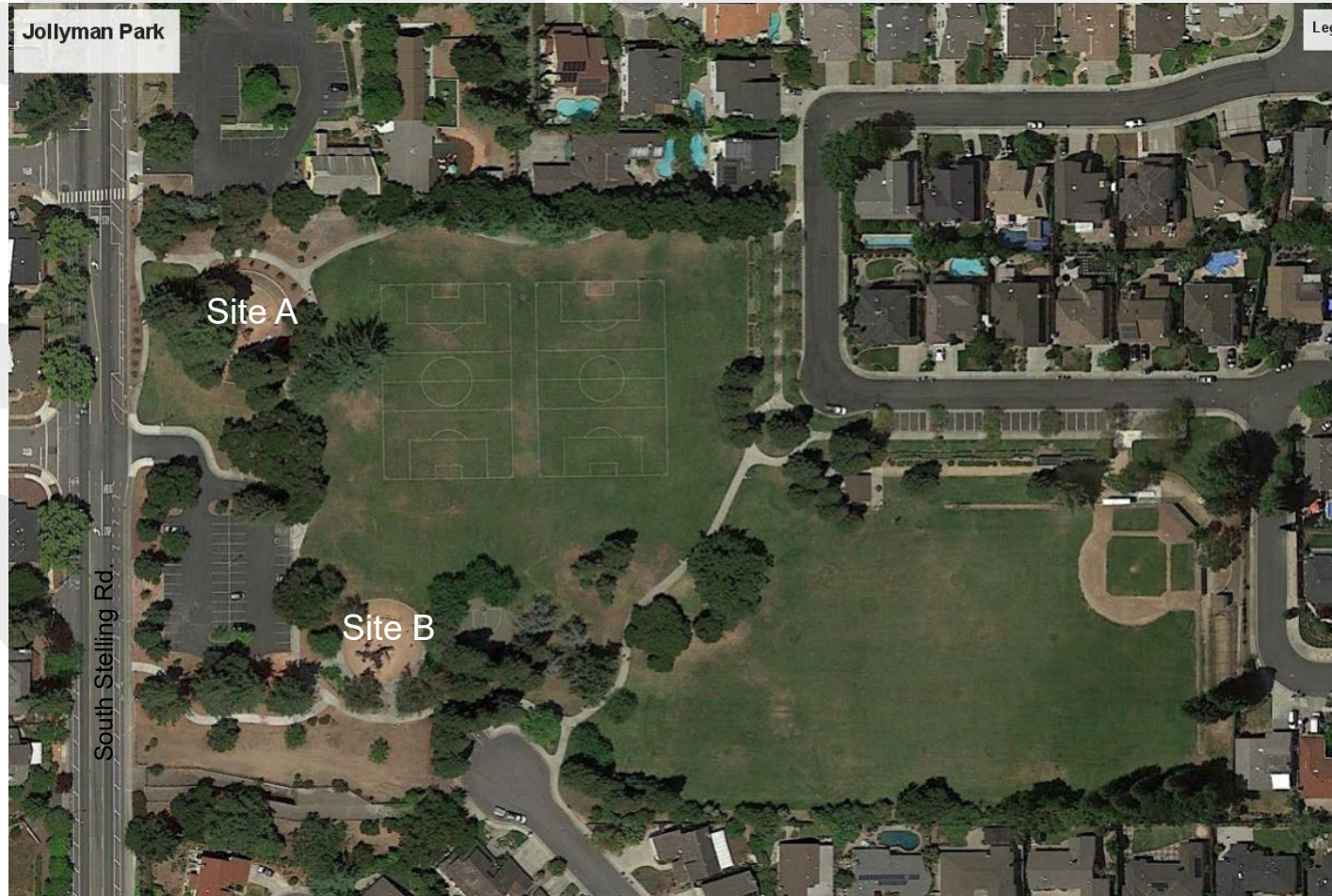
Top choice:

- Jollyman Park, sites A and B (at existing play areas)
- Parks & Recreation Commission endorsed findings June 7, 2018



# Jollyman Park

---



## Next Step

- Consultant developed sample concept plans & costs

## All-Inclusive Concepts for Jollyman Park

---

### Concept Plans

- Presented to Parks & Recreation Commission August 6, 2018
- Commission remained supportive
- Public input was favorable

# Site Plan, Jollyman Park





# Swing Zone



**Biggo Swing**



**Sway Glider**



**Wheelchair Swing**



**Bucket Swing**



# Spinner Zone

---



**Spinner Bowl**



**Dish Spinner**



**Integration Carousel**



**Net Spinner**



# Slide Zone



**Roller Slide**



**Tunnel Slide**



**S Slide**



**Double Slide**



# Climbing Zone

---



**Climber Net**



**Climber Wall**



**Loop Climbers**



**Climbing Eagles Nest**



# Sound and Tactile Zone

---



**Laser Harp**



**Chimes**



**Tuned Drums**



**Kettle Drum**



# Tot Zone

---



Tot Slide



Expression Swing



Play House



See-Saw

## All-Inclusive Playground Grant Opportunity

---

# Santa Clara County All-Inclusive Playground Grant Program (AIPG)

- Feb 2017, County Board of Supervisors creates AIPG program
- \$10M program approved, \$2M/district
- Applications invited July 2017, due Oct. 2017
- City had no project nor site
  - Feas. Study funding approved FY 17-18
- Jan. 2018, Board of Supervisors awarded all \$2M available for our district

## All-Inclusive Playground Grant Opportunity

---

# Santa Clara County All-Inclusive Playground Grant Program (AIPG)

- Sept. 11, 2018, new funding cycle issued
- \$10M program, \$2M/district
- Applications due Oct 12, 2018
  - Short turnaround
- Opportunity brought to Council



## All-Inclusive Playground Grant Opportunity

---

# City Council considered AIPG grant opportunity Oct. 2, 2018

- \$1.2M city contribution
- Request a substantial AIPG grant
- Provide the balance via fundraising
  - ~\$5M total budget
  - Return with fundraising options

+++++

- Council authorized grant app.
- Council adopted reso. to execute grant agmt. & proceed (Attach. D)

# Grant Scoring

Criteria included:

- Design
  - Location & access
  - Project Readiness & Professional Capability
  - Maintenance
- Plan for project was required
  - Scoring was site-specific

# Conceptual Layout Plan, Jollyman Park

## Main Entry

- Fun Directional Signage
- Stroller Parking
- Decorative Paving
- Arbor
- Bike Racks

## ADA Accessible Parking and Path of Travel

## Platform Overlook with Guardrail

## Sound and Sensory Zone

- Lazer Harp
- Musical Music Features
- Quiet Cocoon

## Art Wall

## Bridges

- Sway Bridge
- Stable Bridge

## Playhouse

- 2 Story

## Open Play

- Seating
- Shade Structure

## Look Outs

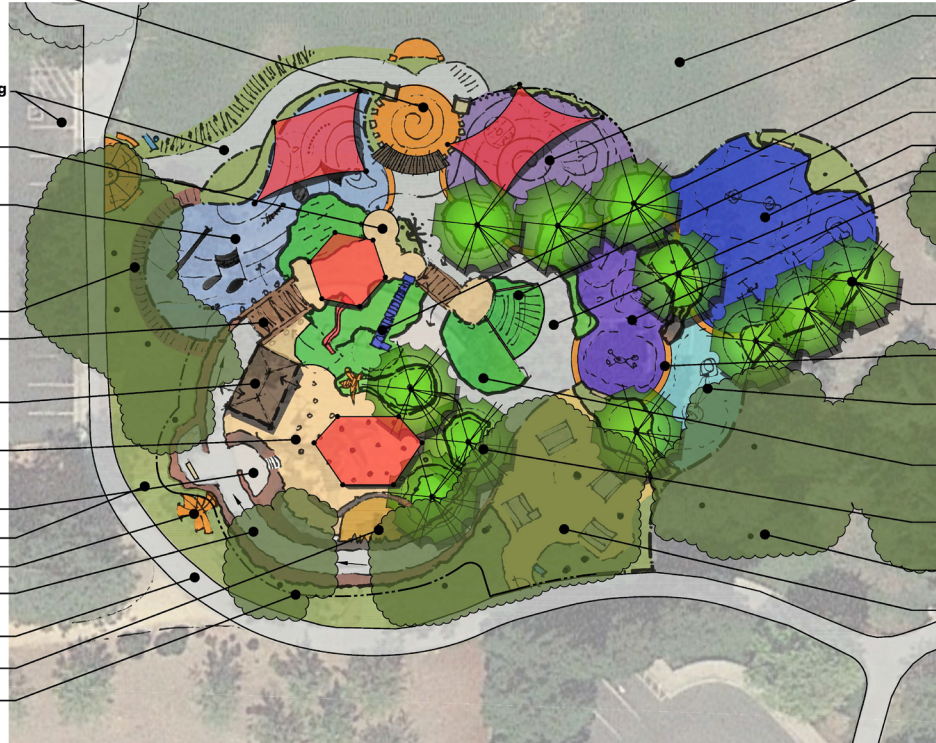
## Planting

## Art Element

## Sloping Path with Handrails Existing Path

## Stage

## Perimeter Fence



## Existing Park

## Spinner Zone

- Shade Sail
- Quiet Cocoon

## Slide and Climbing Zone

## Climbing Cargo Net

## Swing and Sway Zone

## Colored Concrete

## Tot Zone

- Quiet Cocoon
- Slide
- Climbing Giraffe
- Kinder Bells
- Seesaw

## Proposed Shade Trees - Typical

## Textured Zone Entry Banding

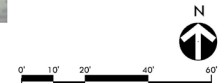
## Kindness and Compassion Area

## Synthetic Turf Slopes and Climbing Loops

## Planters with Benches - Typical

## Existing Trees - Typical

## Picnic Area under Existing Trees



## Grant Application Results

---

# County Board of Supervisors authorized grant awards

**December 18, 2018**

- Our district was most competitive
- Our application scored strongly
- Received \$1,448,201 award
  - Largest in our district, 2<sup>nd</sup> largest overall
- County has sent funding agreement (Att. F)

# Action This Evening

## If the Council wishes to proceed:

- Execute funding agreement with County of Santa Clara to accept \$1,448,201 in grant funding and proceed with implementation of an all-inclusive playground at Jollyman Park.

# All-Inclusive Play Feasibility Study

City Council  
May 13, 2019



CUPERTINO



# Creekside Park



# Jollyman Park

