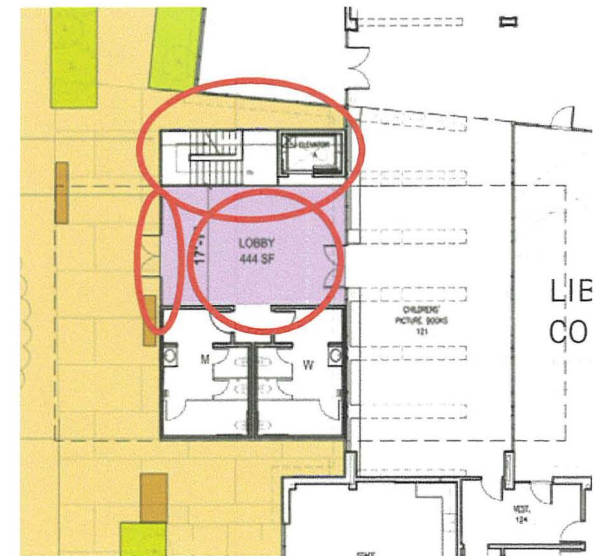
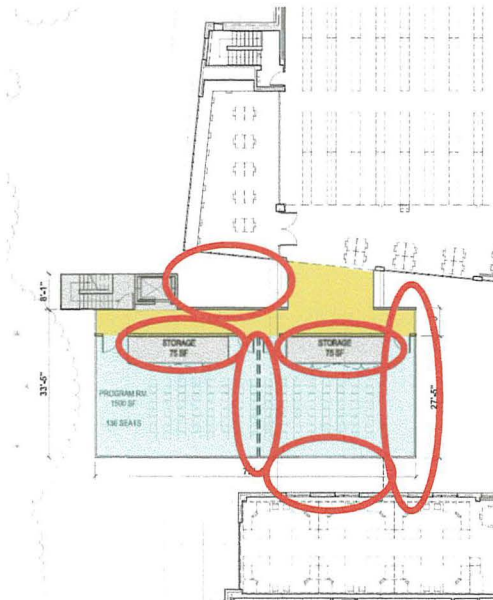


cc 4/30/19
#2

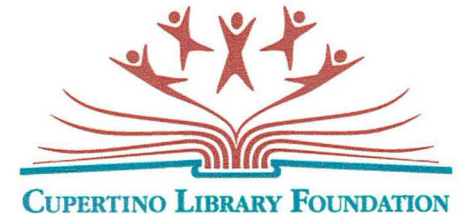
Easy to find problems with concept designs

- Stairs in two different spots
- Not connected to the staff area
- Storage in wrong places
- Doors to outside in the wrong places
- Overhang out back is expensive and reduces usable space
- Overhang in the courtyard should be deeper to make area more usable
- Gap between Story Room and add-on should be bridged (enlarge Story Room)
- Should bridge to the redwood area
- ...



Library and District not involved in design or requirements!

Questions about estimates



- Similar Projects
 - 3000 SF Morgan Hill Program Room est. \$4M
 - 12000 SF SCCLD new building in Campbell est. \$8M
- Why are Cupertino Rates so much higher?
 - Are these max prices that then become the bid price?
 - What can be done to reduce costs and cost overruns/change orders?
 - Have we looked at operational expense containment?

CLF to form a Cupertino Citizen group of architects, builders, construction managers, purchasing agents,... to make sure the plans do we want and to find problems.

We want a Better Together Play

CC 4/30/19
#2

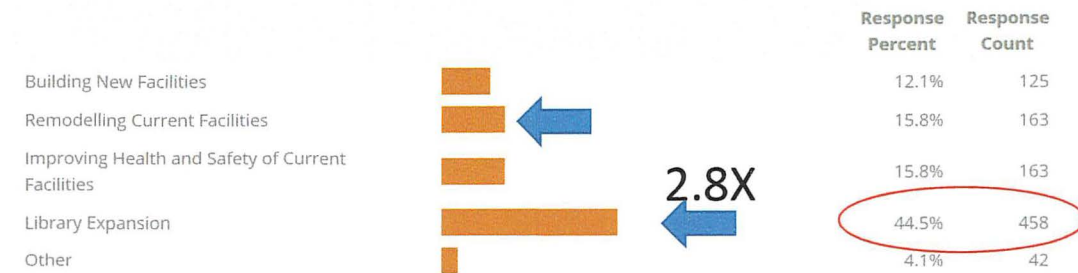
City Survey

April 26, 2019

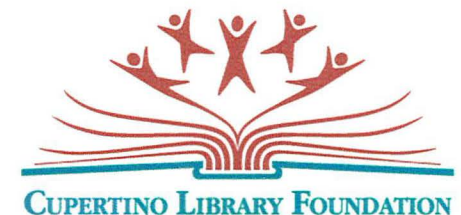
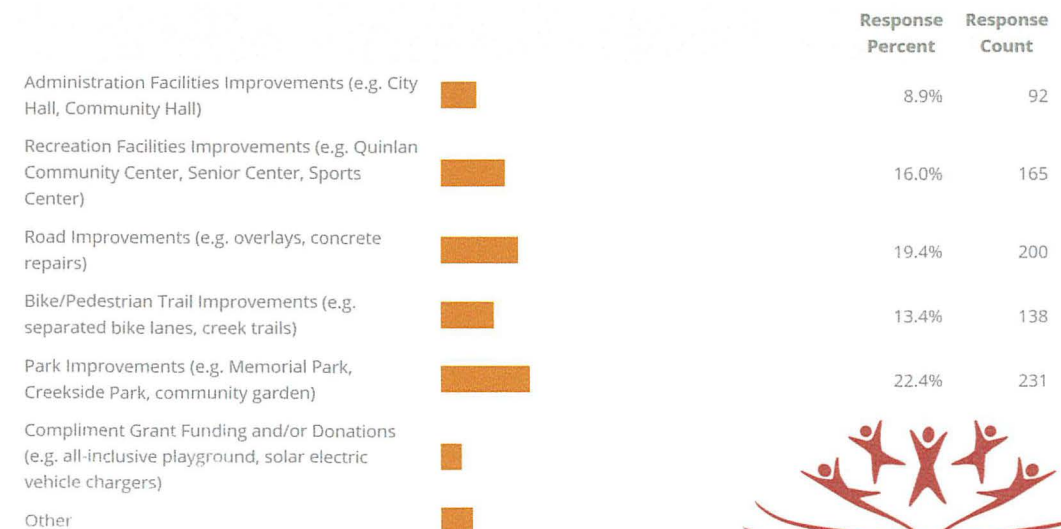
- The Cupertino Community wants the Library Expansion
 - **2.8X** 2nd place choice
- Library provides much wanted services by the Community
 - ~900K visitors in 2018
 - 656 programs AND we don't have a Program Room!

CLF to launch education campaign for patrons

You've got 10 dots to 'spend' on the City's facilities. Each dot is worth \$100,000. How would you spend them on these areas?



You've got 10 dots to 'spend' on capital improvement projects in the City. Each dot is worth \$100,000. How would you spend them on these areas?



Why Programs are increasingly important

The Rise of the Seniors

- Population inversion underway
 - Senior population growing
- **Library adapting to new needs**
 - **Programs are key**
- Seniors need new
 - Education
 - Health/Wellness
 - Entertainment
 - Involvement

