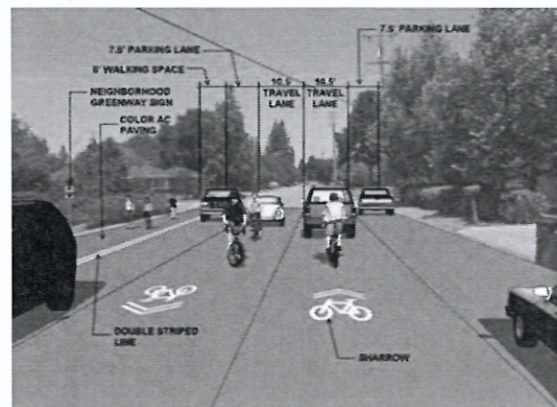
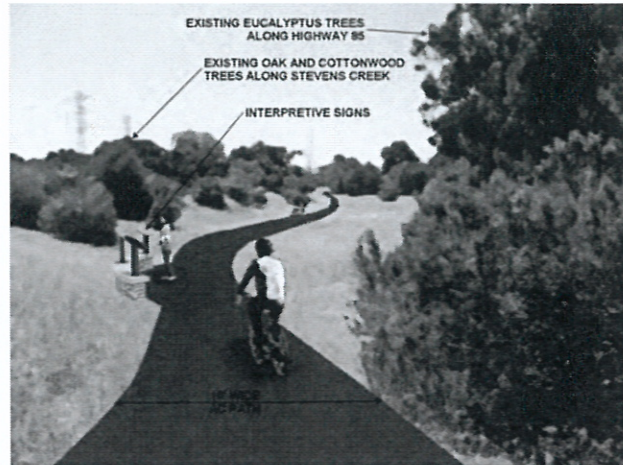
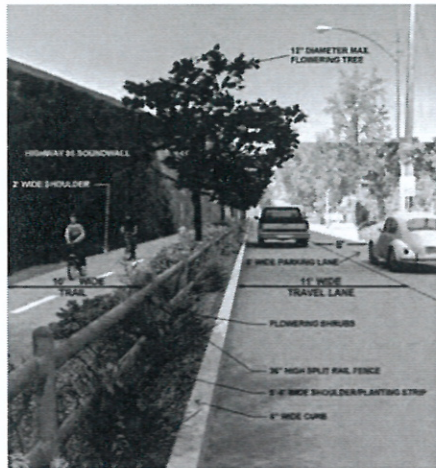


# Joint Cities Coordinated Stevens Creek Trail Feasibility Study



Prepared for:  
**Cities of Sunnyvale, Cupertino,  
Los Altos and Mountain View and  
Santa Clara Valley Water District**

In conjunction with:  
**Joint Cities Working Team  
Citizens Working Group**

**September 2015**



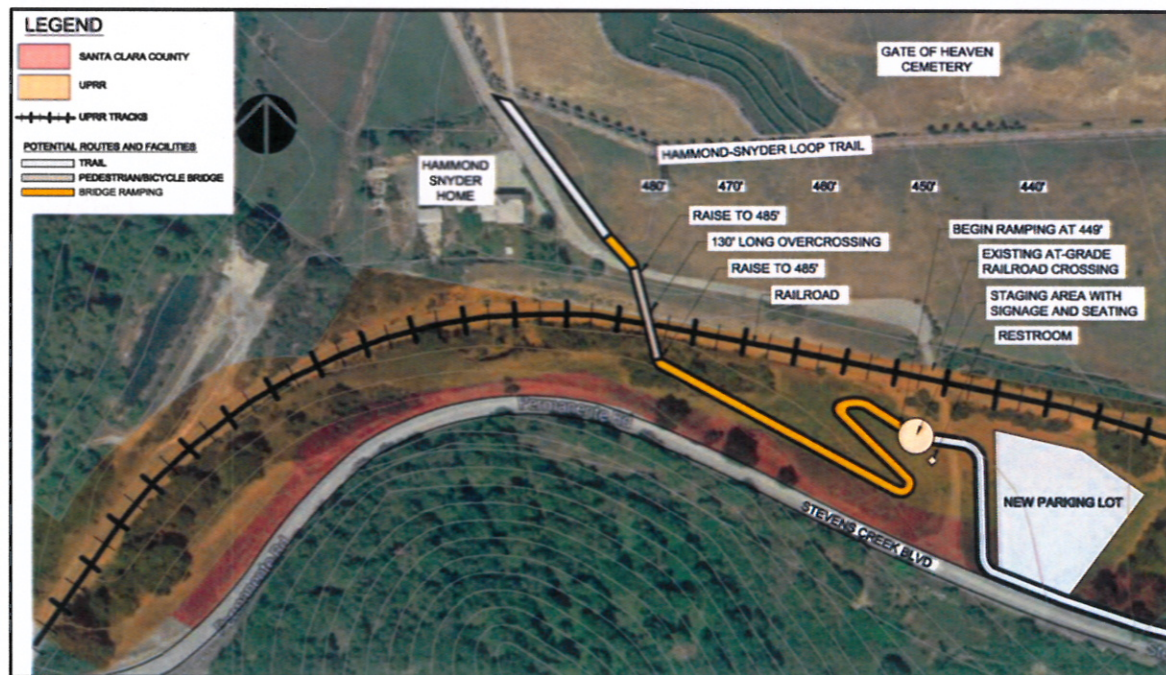
slice through the hillside. The trail and bridge location is down slope from the Hammond-Snyder historical house and would require access through undeveloped land along Stevens Creek Boulevard owned by Santa Clara County Roads & Airports Department and UPRR. The pedestrian and bicycle bridge would also require both ground and aerial rights along and over the UPRR line. The ramps to the bridge would be elevated approximately three feet above the existing hillside grade to the 485-foot contour to provide adequate clearance for train passage. The 485-foot elevation provides approximately 28 feet of clearance between the tracks and pedestrian/bike bridge.



*The UPRR Rail line runs between Rancho San Antonio County Park and Stevens Creek Boulevard.*

The staging area would require acquisition of undeveloped Santa Clara County Roads & Airports Department land that parallels both the UPRR line and Stevens Creek Boulevard west of Stonebridge. Acquisition of a portion of the UPRR lands adjacent to the rail corridor may also benefit the staging area (See Map 12 – Study Segment 4: Stevens Creek Boulevard Connection to Rancho San Antonio County Park Alignments Map).

Rancho San Antonio County Park is the second most heavily visited County Park and the parking areas are often full. A trail staging area would provide additional parking, restrooms, signage and a trail connection to the existing Hammond-Snyder Loop Trail in Rancho San Antonio County Park (See Figure 28 – Staging Area and Trail Connection Concept Plan). A trail connection from Stevens Creek Boulevard



*Figure 28 – Staging Area and Trail Connection Concept Plan.*

**PRELIMINARY COST ESTIMATE**

**STAGING AREA AND TRAIL ACCESS TO**

**RANCHO SAN ANTONIO COUNTY PARK AND OPEN SPACE PRESERVE**

**Stonebridge to Hammond-Snyder Loop Trail**

Asphalt Paving – SC Blvd. to Hammond-Snyder Loop Trail (1,670 feet)	\$ 425,000
Rough Grading and Limited Off-haul for Trail Ramps	\$ 165,000
Finish Grading – Entire Site	\$ 50,000
Steel Truss Ped / Bike Bridge spanning UPRR (130 feet x 10 feet)	\$ 150,000
Restroom	\$ 100,000
Utilities for Restroom	\$ 20,000
Gravel Parking Lot	\$ 380,000
Split Rail Fence around Parking Lot	\$ 30,000
Gathering Area and Kiosk	\$ 50,000
Native Plant Landscaping	\$ 25,000
Trail Amenities and Signage	\$ 15,000
Clear and Grub	\$ 30,000
Mobilization 10%	\$ 75,000
<b>Construction Subtotal</b>	<b>\$ 1,515,000</b>
Design and Engineering 30%	\$ 450,000
Construction Management 15%	\$ 225,000
Testing and Inspections 5%	\$ 75,000
<b>Design and Construction Subtotal</b>	<b>\$ 2,265,000</b>
UPRR Fees	\$ 40,000
Technical Studies	\$ 60,000
Permitting	\$ 40,000
Project Contingency 20%	\$ 450,000
<b>Project Total*</b>	<b>\$ 2,855,000</b>

**Budget Note:** This estimate does not include land acquisition costs associated with UPRR and Santa Clara County Roads and Airports Department.

*Figure 40 – Staging Area and Trail Access to Rancho San Antonio County Park and Open Space Preserve Construction Budget Estimate*