

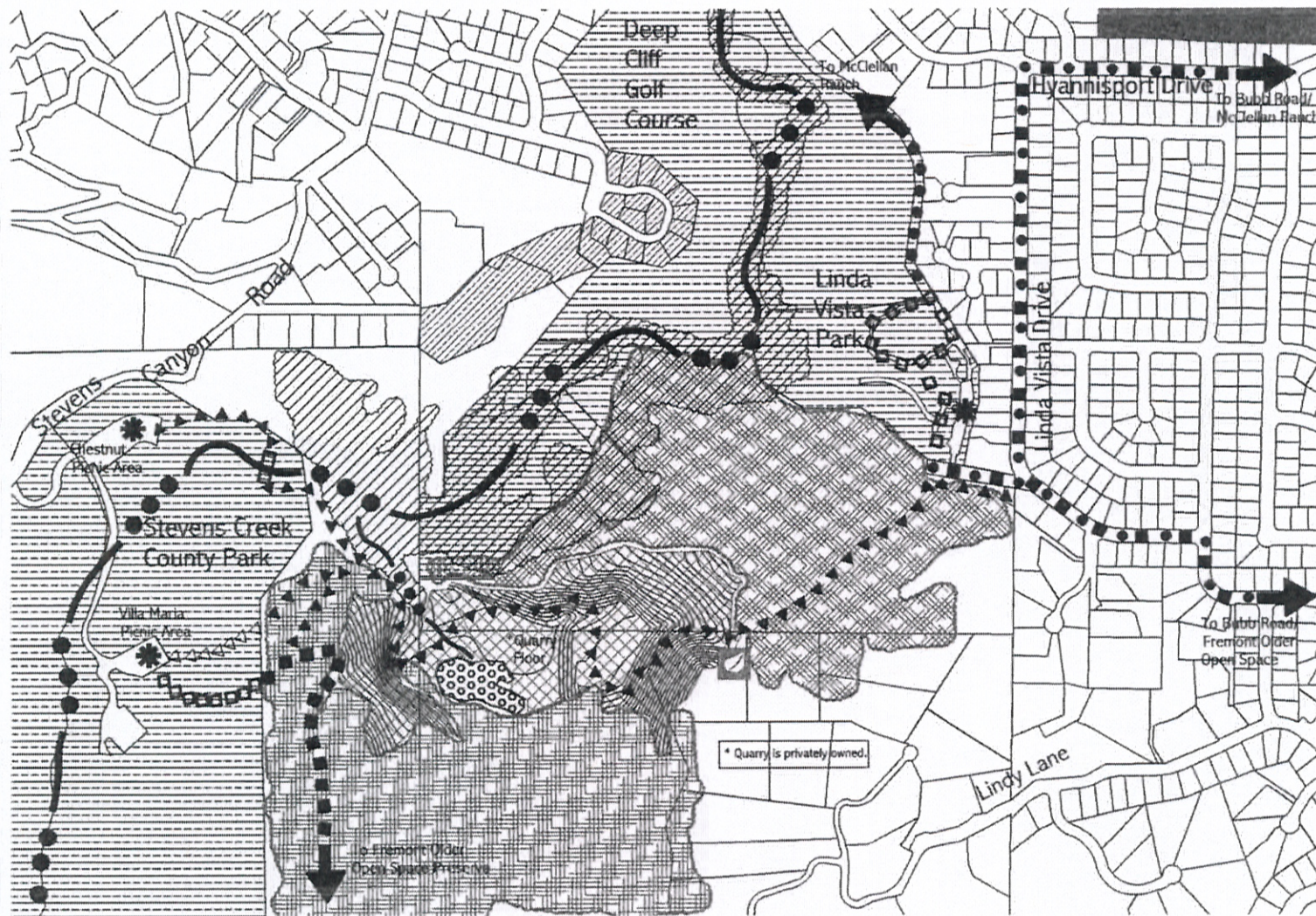
PRE-PRINT FINAL
STEVENS CREEK TRAIL
FEASIBILITY REPORT

IMPLEMENTING PORTIONS OF TWO OF SANTA CLARA COUNTY'S TRAIL ROUTES:
STEVENS CREEK TRAIL (ROUTE S-2) AND
JUAN BAUTISTA DE ANZA NATIONAL HISTORIC TRAIL (ROUTE R-1A)

SEPTEMBER 23, 2002

Prepared by:
Jana Sokale, Environmental Planner

For:
City of Cupertino
Parks and Recreation Department
Santa Clara County



LEGEND

Features of the Trail

- Creek Channel (Low Flow)
- Proposed Soft Surface
- Existing Soft Surface
- Proposed Hard Surface
- Existing Hard Surface
- Proposed Single-Track Interpretive Trail
- Existing Single-Track Interpretive Trail
- Boardwalk Alignment
- Sidewalk Alignment
- On - Street Alignment
- Winter Trail Alignment
- Ramps
- Tunnel
- Underpasses
- Pedestrian / Bicycle Bridges
- Natural Science Interpretive Area
- Historical / Cultural Interpretive Area
- Staging Area
- Access Points
- Mid - Block Crossings
- Proposed Signalized Intersections
- Existing Signalized Intersections
- Stop Sign Intersections
- At-Grade Railroad Crossing

Bicycle/ Transit Systems

- Bike Lanes
- Bike Routes
- Union Pacific Railroad

Land Uses

- Educational Campus
- R & D / Commercial
- Civic Center / Institutional

Habitat Types

- Open Grassland
- Riparian Vegetation
- Oak Woodland/ Chaparral
- Oak Woodland/ Grassland
- Freshwater Wetlands
- In-stream Habitat
- Orchard
- Parks/ Golf Course
- Suburban Development

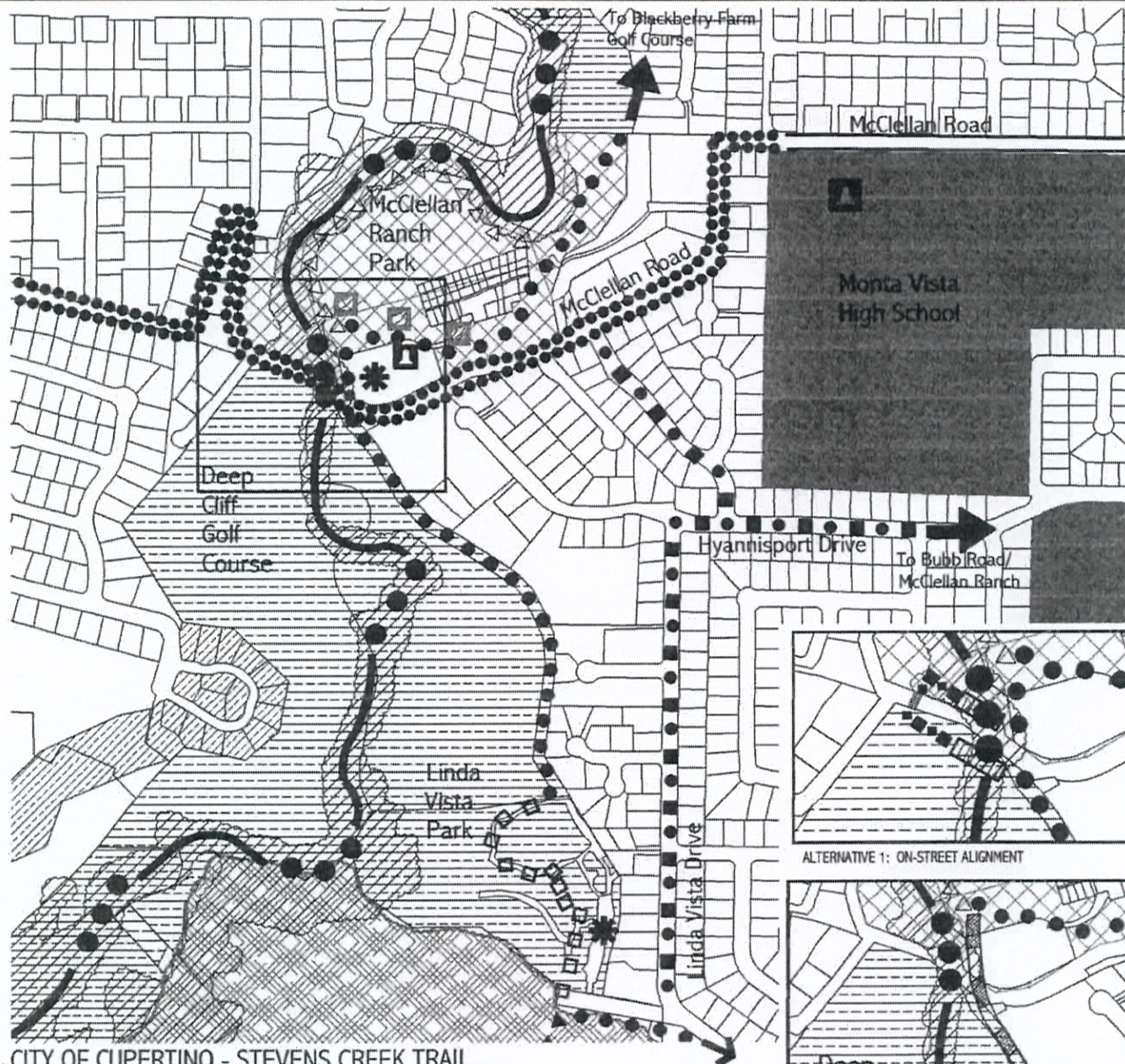
CITY OF CUPERTINO - STEVENS CREEK TRAIL

MAP 6 - STUDY AREA B TRAIL ALIGNMENT -

STEVENS CREEK COUNTY PARK TO LINDA VISTA PARK

PREPARED BY: JANA SOKALE, ENVIRONMENTAL PLANNING
HILL ASSOCIATES





CITY OF CUPERTINO - STEVENS CREEK TRAIL
 MAP 7 - STUDY AREA C TRAIL ALIGNMENT -
 LINDA VISTA PARK THROUGH MCCLELLAN RANCH TO BLACKBERRY FARM

PREPARED BY: JANA SOKALE, ENVIRONMENTAL PLANNING
 HILL ASSOCIATES

LEGEND

Features of the Trail

- Creek Channel (Low Flow)
- Proposed Soft Surface
- Existing Soft Surface
- Proposed Hard Surface
- Existing Hard Surface
- Proposed Single-Track Interpretive Trail
- Existing Single-Track Interpretive Trail
- Boardwalk Alignment
- Sidewalk Alignment
- On - Street Alignment
- Winter Trail Alignment
- Ramps
- Tunnel
- Underpasses
- Crosswalk
- Pedestrian / Bicycle Bridges
- Natural Science Interpretive Area
- Historical/ Cultural Interpretive Area
- ★ Staging Area
- ◆ Access Points
- Mid - Block Crossings
- ★ Proposed Signalized Intersections
- ★ Existing Signalized Intersections
- Stop Sign Intersections
- ◆ At-Grade Railroad Crossing

Bicycle/ Transit Systems

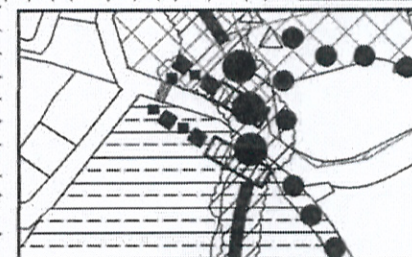
- Bike Lanes
- Bike Routes
- Union Pacific Railroad

Land Uses

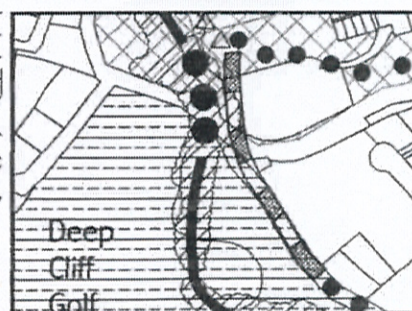
- Educational Campus
- R & D / Commercial
- Civic Center / Institutional

Habitat Types

- Open Grassland
- Riparian Vegetation
- Oak Woodland/ Chaparral
- Oak Woodland/ Grassland
- Freshwater Wetlands
- In-stream Habitat
- Orchard
- Parks/ Golf Course
- Suburban Development



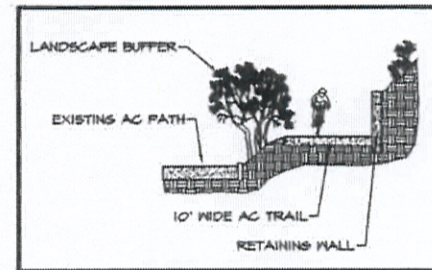
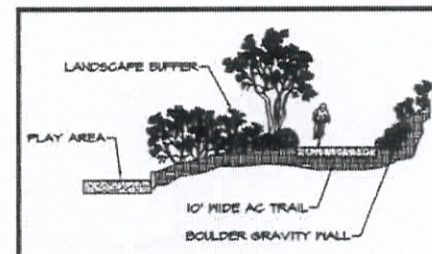
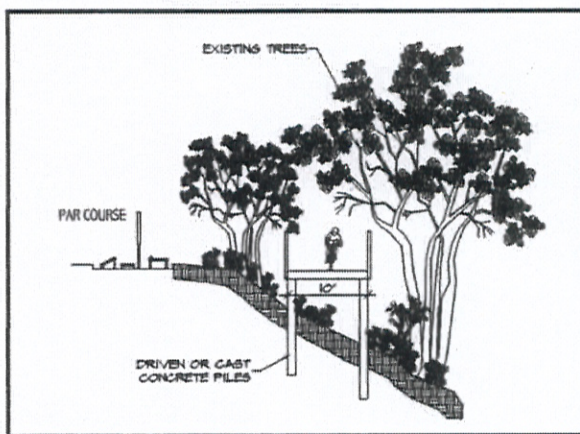
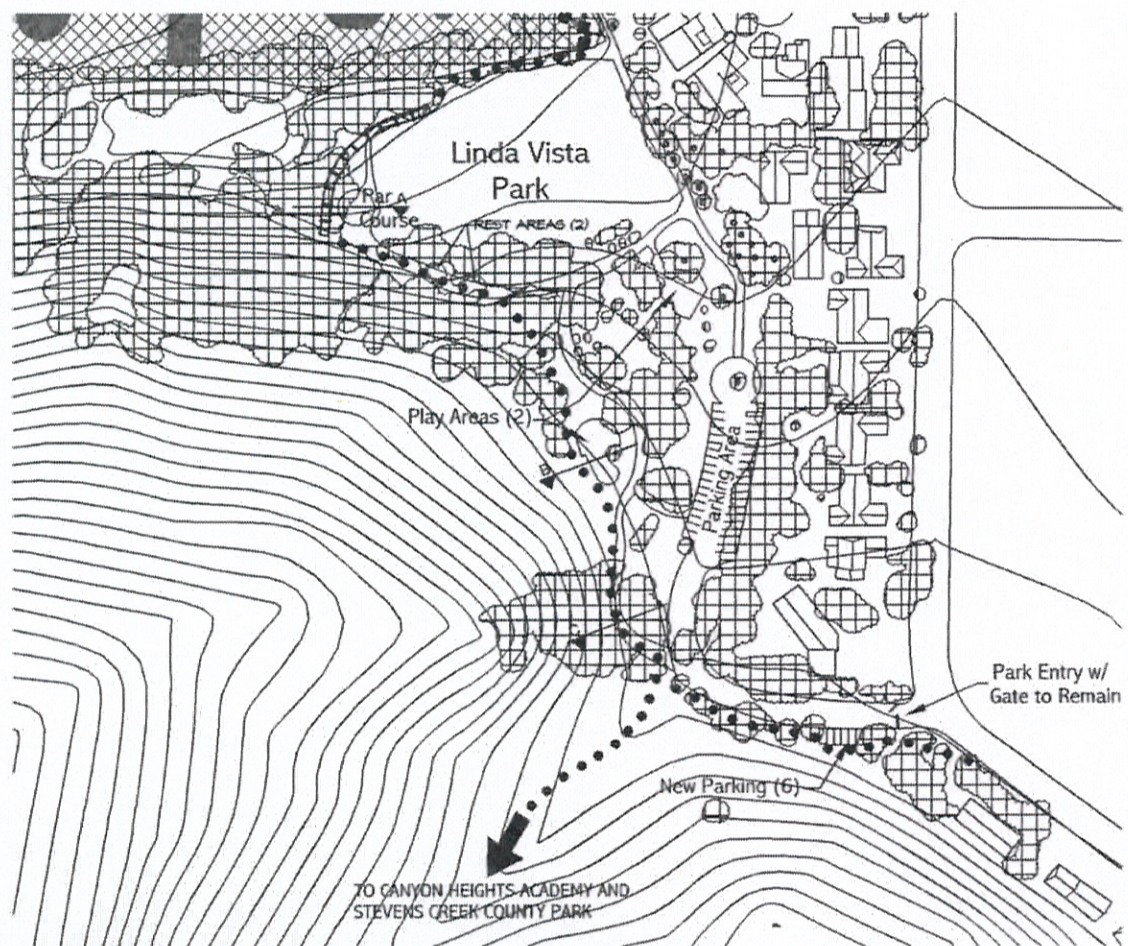
ALTERNATIVE 1: ON-STREET ALIGNMENT



ALTERNATIVE 2: UNDERPASS

LEGEND

- Stevens Creek
- Future Boardwalk or Cut with Retaining Wall
- Future Trail
- Future Elevated Trestle Bridge
- Existing Tree Canopy
- Existing Golf Course
- Golf Course Playing Areas
- Golf Course Lake



CITY OF CUPERTINO - STEVENS CREEK TRAIL MAP 8 - STUDY AREA C - LINDA VISTA PARK TRAIL ALIGNMENT

LINDA VISTA DRIVE TO HAUL ROAD
PREPARED BY: JANA SOKALE, ENVIRONMENTAL PLANNING
HILL ASSOCIATES

