

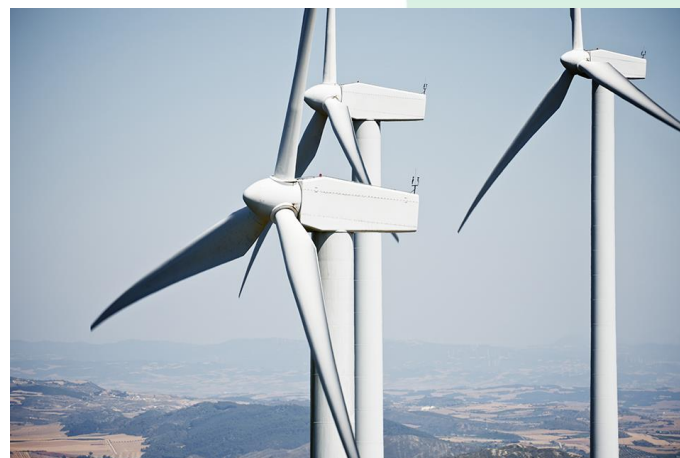


Community Presentation



Overview

- Introduction to SVCE
- How it Works
- Electricity Choices
- Timeline
- FAQs



A large, stylized leaf graphic in a lighter shade of green, positioned on the left side of the slide. It has a smooth, flowing shape with a pointed tip and a curved base.

Who is Silicon Valley Clean Energy?

SVCE Communities



Campbell | Cupertino | Gilroy | Los Altos | Los Altos Hills



Los Gatos | Monte Sereno | Morgan Hill | Mountain View



Santa Clara County | Saratoga | Sunnyvale

SVCE Benefits



Offer more **new clean energy choices** and more competition in the energy marketplace



Provide **cleaner energy** at competitive prices



Significantly **reduce GHG emissions** from electricity generation



Facilitate the use of clean energy technology innovations



Help communities **meet climate action goals**

How does it work?



SOURCE



SVCE

buying and
building energy
supplies

DELIVERY



PG&E

delivering energy,
repairing lines,
serving customers

CUSTOMER



YOU

benefitting from
cleaner energy,
local control

Sample Bill

PG&E **ENERGY STATEMENT**
www.pge.com/MyEnergy

Account No: 6632598009-3
Statement Date: 09/09/2015
Due Date: 09/30/2015

Service For:
Sparky Joule
123 Main Avenue
Los Altos, CA 94022

Questions about your bill?
24 hours per day, 7 days per week
Phone: 1-866-743-0335
www.pge.com/MyEnergy

Local Office Address
10900 N Blaney Avenue
Cupertino, CA 95014

Your Account Summary

Amount Due on Previous Statement	\$115.84
Payment(s) Received Since Last Statement	-115.84
Previous Unpaid Balance	\$0.00
Current PG&E Electric Delivery Charges	\$77.76
SVCE Electric Generation Charges	52.83
Current Gas Charges	16.22
Total Amount Due by 09/30/2015	\$146.81

Monthly Billing History

\$600			
\$450			

Daily Usage Comparison

1 Year Ago	Last Period	Current Period
27.03	17.96	20.06

A large, stylized leaf graphic in a lighter shade of green, positioned on the left side of the slide. It has a smooth, flowing shape with a pointed tip and a curved base.

Enrollment

Enrollment

- Customers are automatically enrolled into the SVCE program
- Customers can “opt out” to stay with PG&E for bundled service
- Customers receive at least 4 notices (2 pre- and 2 post-enrollment)



Your electricity service is about to get a lot greener!

Silicon Valley Clean Energy (SVCE) will soon be your official electricity provider, bringing you **100% carbon-free electricity at lower rates than PG&E**. SVCE serves homes and businesses in our local community. Because there are no shareholders, we reinvest revenue right here to keep rates low and promote local green energy projects.

You're in!

 **GreenStart**
100% Carbon-Free

In **April 2017**, you'll be automatically enrolled in SVCE GreenStart—you don't need to do a thing. Or, you can choose to upgrade to GreenPrime, providing 100% renewable energy. You can also opt out to remain entirely with PG&E.

SVCleanEnergy.org

¡Su servicio de electricidad está a punto de ser mucho más verde!

Electricidad 100% libre de carbono a precios más bajos que PG&E.

您的電力服務即將變得更加環保!

100% 無碳電力, 比PG&E更便宜



Enrollment Phasing

April 2017 → July 2017 → Oct 2017



Residential
20%
OF ACCOUNTS



Residential
55%
OF ACCOUNTS



Residential
100%
OF ACCOUNTS



**Small/Medium
Commercial**
100%
OF ACCOUNTS



**Large
Commercial**
100%
OF ACCOUNTS



Agriculture
100%
OF ACCOUNTS



Municipal
100%
OF ACCOUNTS



Industrial
100%
OF ACCOUNTS

A large, stylized leaf graphic in a lighter shade of green, positioned on the left side of the slide. It has a smooth, flowing shape with a pointed tip and a curved base.

Choices and Resources

Electricity Choices

GreenStart

- Standard Enrollment Option
- 1% less than 2017 PG&E generation rates
- 50% Renewable Electricity
- 50% Hydroelectric Power
- 100% Carbon Free
- No change in generation rate through Dec. 2018

GreenPrime

- Voluntary Upgrade
- Cost Premium of 5-10% more than GreenStart, less than \$0.01/kWh
- 100% Renewable Electricity
- 100% Carbon Free
- No change in generation rate through Dec. 2018

Rate Comparison

Sample Residential Cost Comparison

GreenStart	GreenPrime	Opt Out
50% RENEWABLE ENERGY	100% RENEWABLE ENERGY	30% RENEWABLE ENERGY
100% CARBON FREE	100% CARBON FREE	60% CARBON FREE
\$50.96 PG&E ELECTRIC DELIVERY	\$50.96 PG&E ELECTRIC DELIVERY	\$50.96 PG&E ELECTRIC DELIVERY
\$32.80 ELECTRIC GENERATION	\$36.68 ELECTRIC GENERATION	\$47.71 ELECTRIC GENERATION
\$14.43 PG&E ADDED FEES	\$14.43 PG&E ADDED FEES	\$0 PG&E ADDED FEES
\$98.19 AVERAGE TOTAL COST	\$102.07 AVERAGE TOTAL COST	\$98.67 AVERAGE TOTAL COST

FAQs

- How can we be automatically switched from PG&E?
 - *CCA legislation (AB 117) that passed in 2002 to allow for competition with incumbent utility*
- I drive an EV, do I get to keep my EV rate?
 - *Yes, rate structures with PG&E remain the same.*
- I have solar, what does this mean for me?
 - *SVCE offers a Net Energy Metering program that's a better deal than PG&E's*
 - *More info at: [SVCleanEnergy.org/solar](https://svcleanenergy.org/solar)*
- More FAQ's available at: [SVCleanEnergy.org/faqs](https://svcleanenergy.org/faqs)

Where to learn more:



SVCleanEnergy.org



844-474-SVCE (7823)



Billing & Customer Service:

customerservice@svcleanenergy.org



General Info:

info@svcleanenergy.org



@SVCleanEnergy