

SummerHill Homes
20840 Stevens Creek Blvd., Cupertino, CA

Public Art Submittal Part 2: Visuals

- Artwork Visuals and Details
- Site Plan
- Plaque Design and Location

April 14, 2026

Chandra Cerrito / Art Advisors

Proposed Artwork

BLOSSOM

by

Wowhaus

ARTWORK RENDERING

BLOSSOM



ARTWORK DRAWING
BLOSSOM



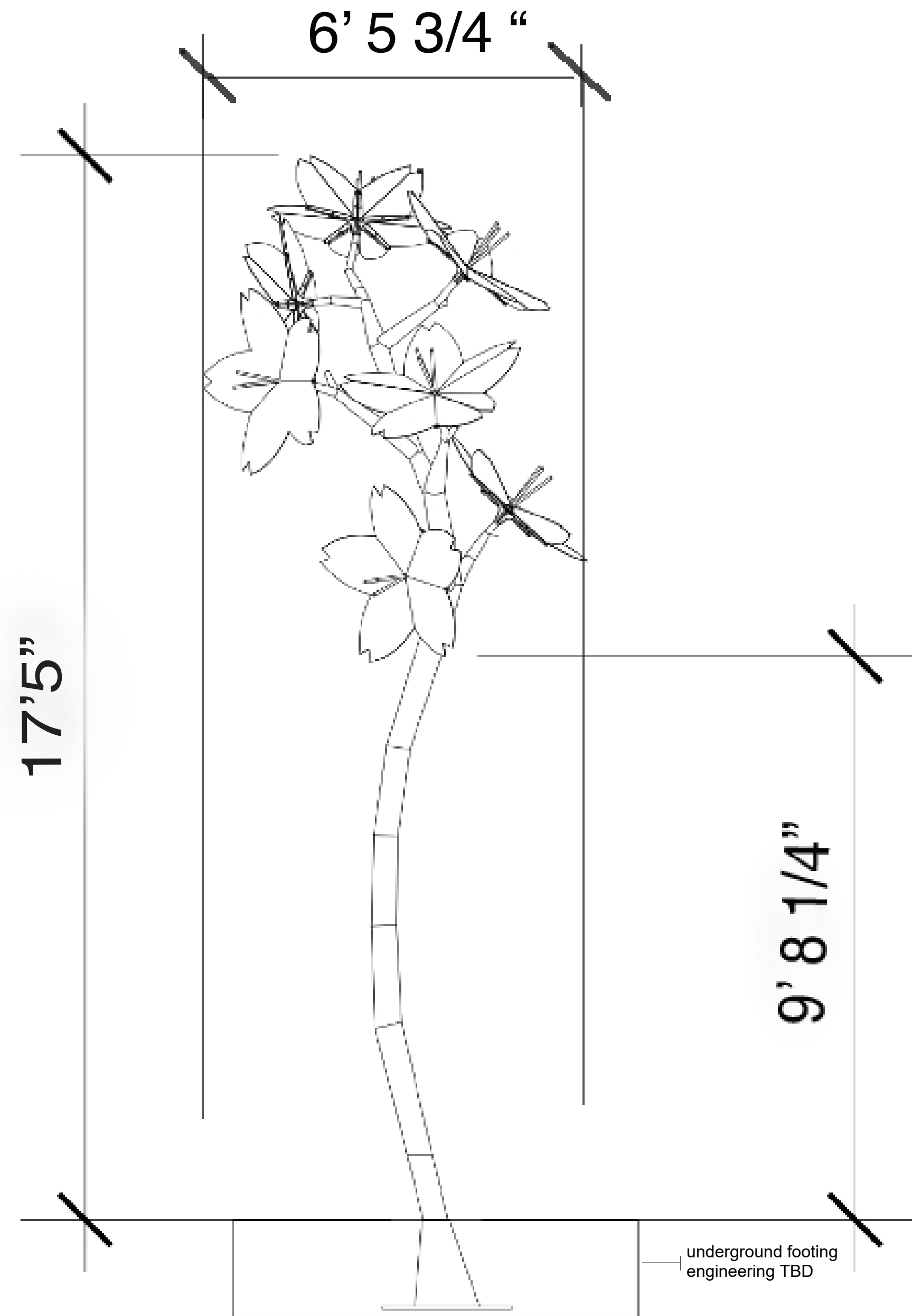
Daytime view



Evening view

ARTWORK DIMENSIONS

BLOSSOM



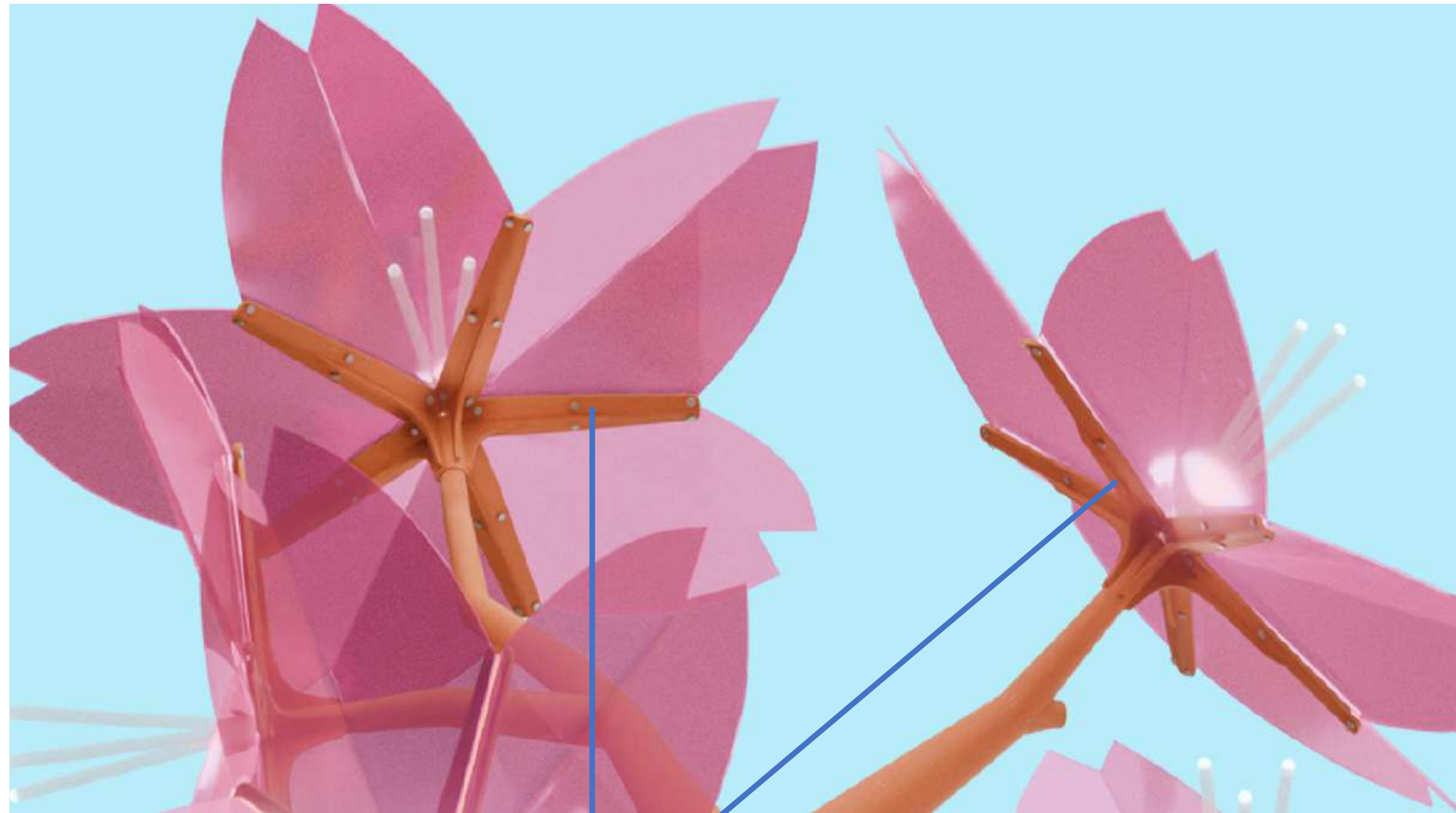
BLOSSOM



BRANCH: WEATHERED (CORTEN) STEEL



BLOSSOM



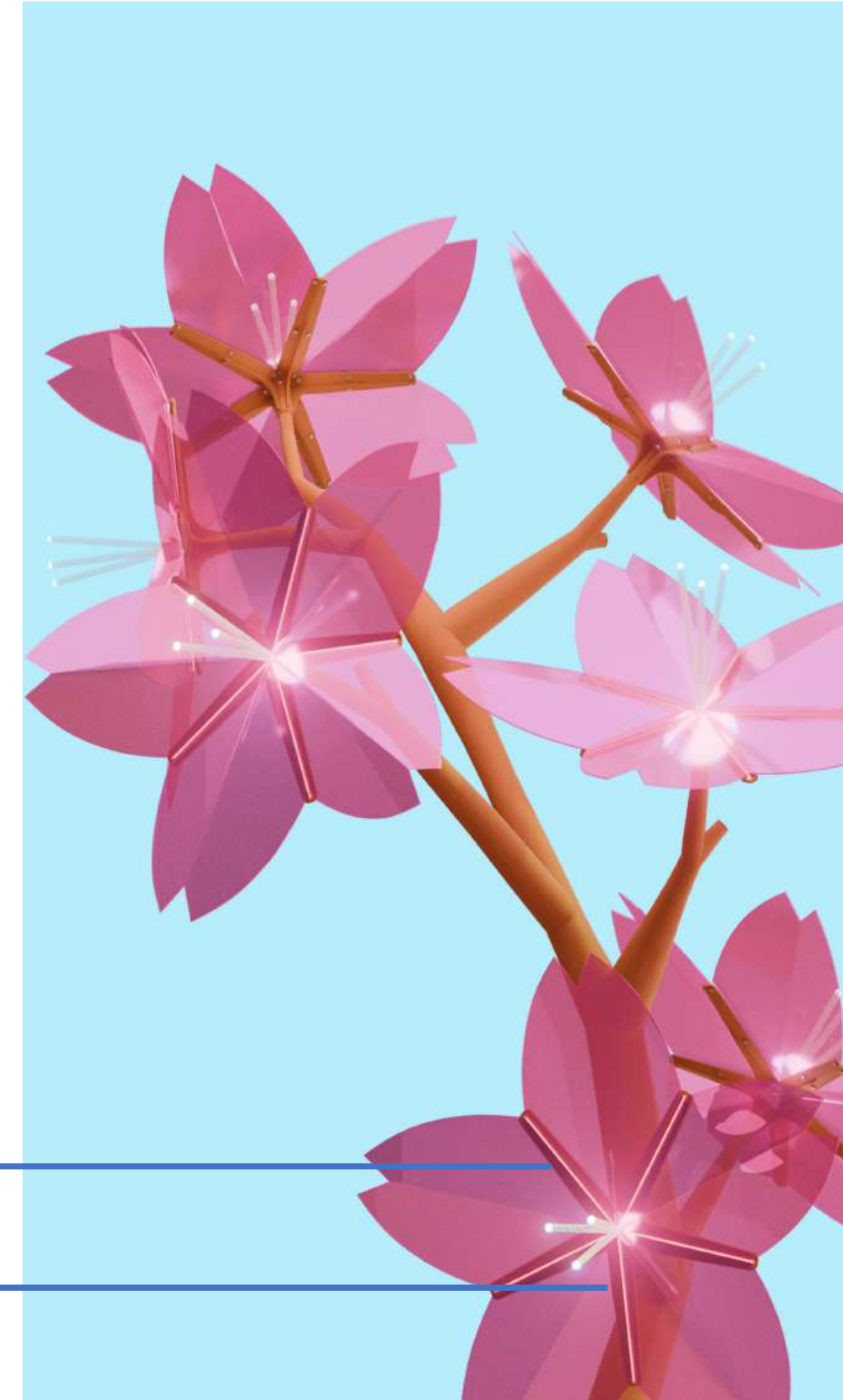
BLOSSOMS

Stainless steel framing and hardware; painted to match weathering steel with exterior grade alkyd enamel

Exterior Grade LED Light Strips in channel behind petals – Pink and/or White

Stamens: Sandblasted Acrylic Rod

7 Blossoms, each approx. 2'11" D

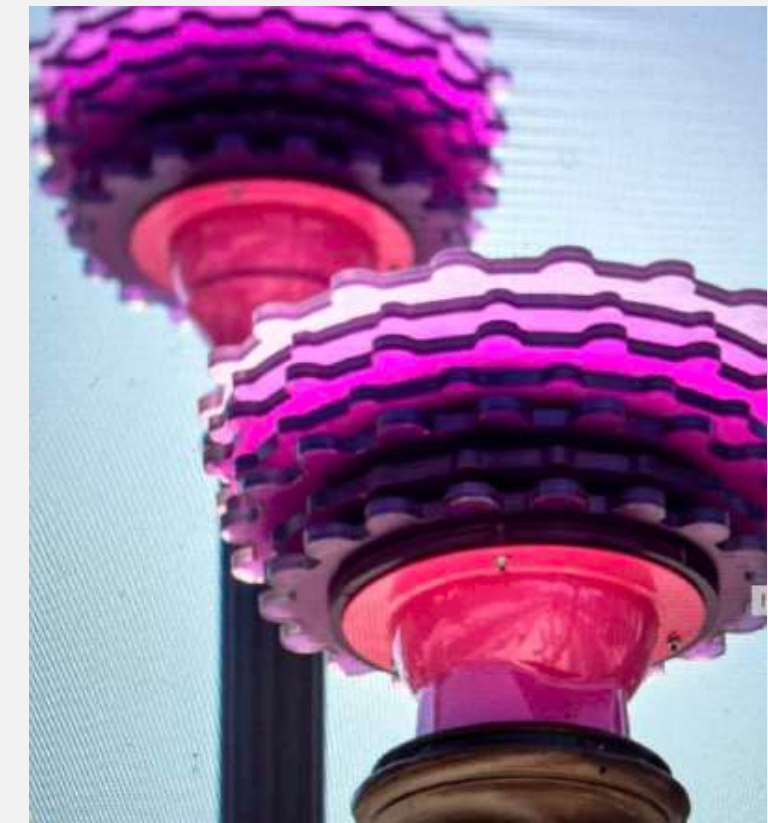
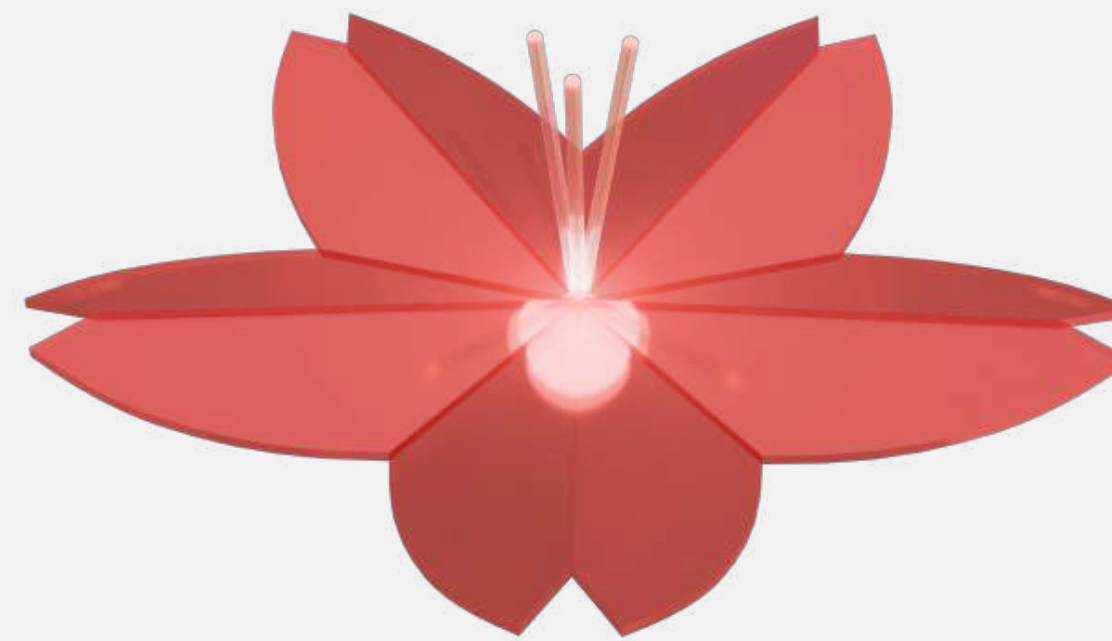
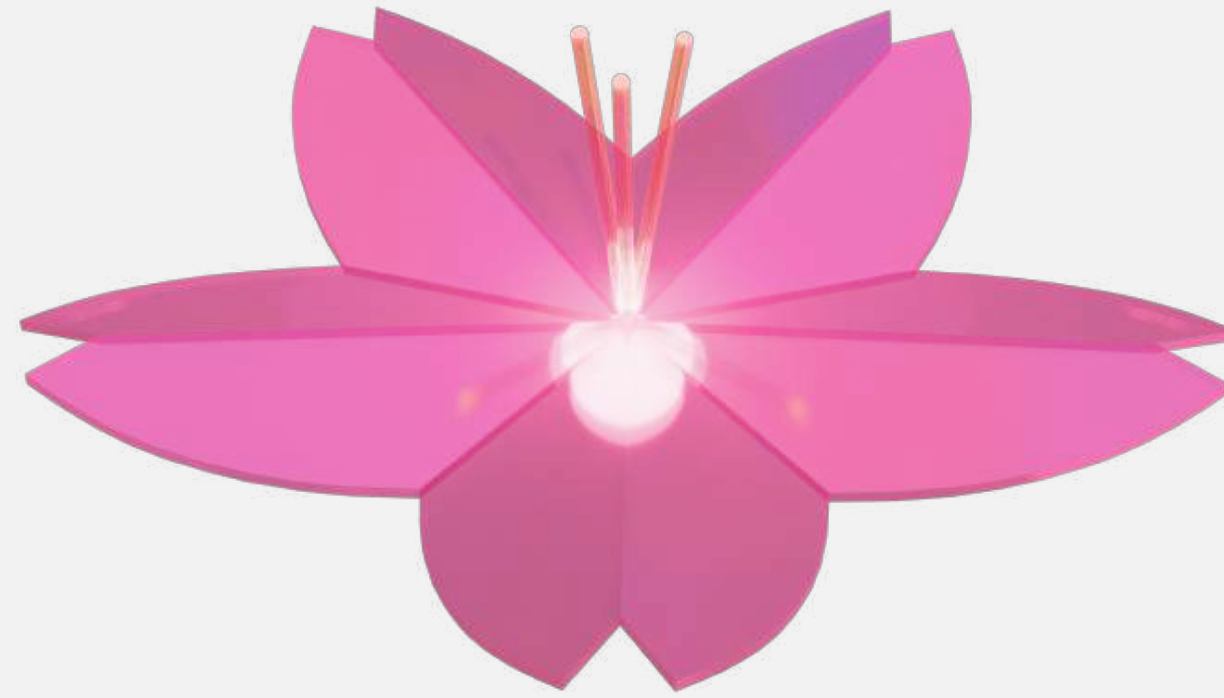


BLOSSOM

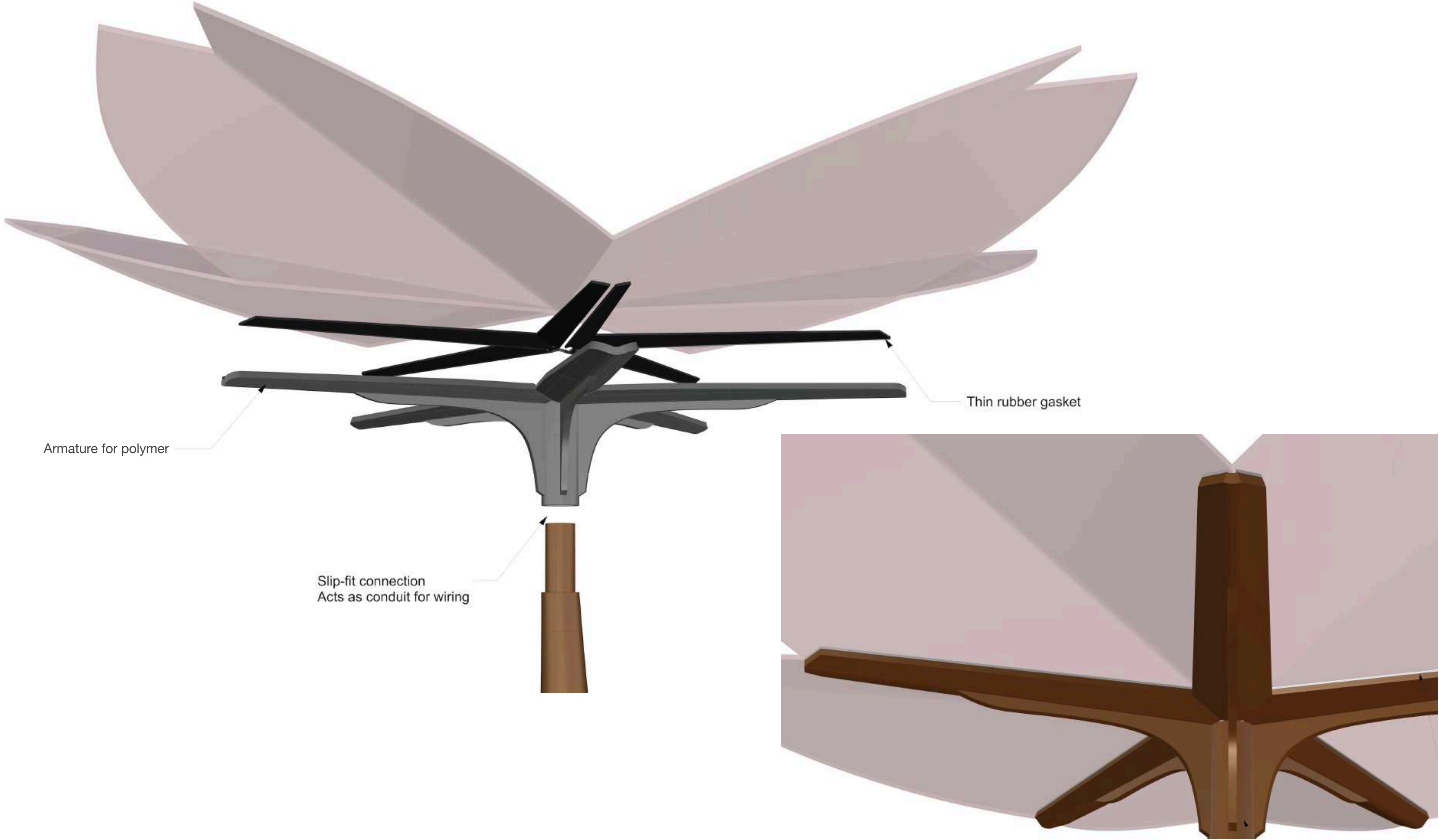


BLOSSOMS

Exterior Grade Polymer with LED Lighting



BLOSSOM



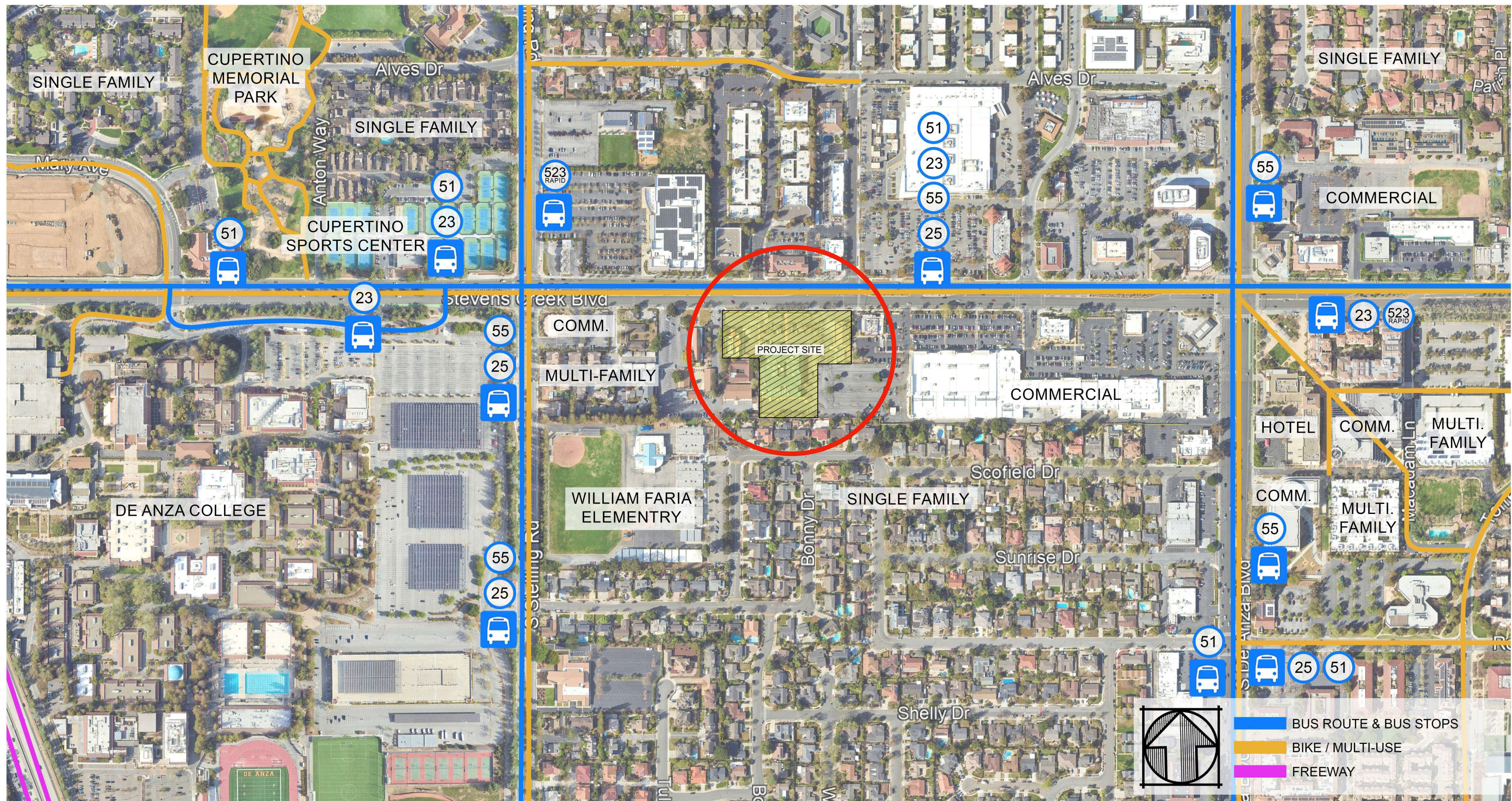
IN SITU RENDERING

BLOSSOM



Site Plan and Art Location

PROJECT SITE



381.079 20840 Stevens Creek Boulevard
Cupertino, CA
March 25, 2025

SITE AERIAL & NEIGHBORHOOD CONTEXT
A03

SITE PLAN

 General artwork location

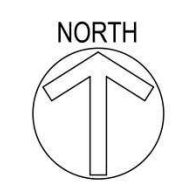


SITE KEY:

#	- UNIT NUMBER
BMR	- BELOW-MARKET RATE UNIT
1	- UNIT 1
ALT	- UNIT 1 ALT
3	- UNIT 3
*	- UNIT 3 ADAPTABLE (6 TOTAL)
4	- UNIT 4

SITE KEY:

	WALKWAY
	PUBLIC WALKWAY
	VEHICLE CIRCULATION
	BIKE LANE



381.079 20840 Stevens Creek Boulevard
Cupertino, CA
March 25, 2025

CIRCULATION PLAN
A06

PLAZA PLANTING AND LANDSCAPE PAN



CONCEPT



CONCEPT

RADIAL PAVER PATTERN



PYRUS CALLERYANA 'CHANTICLEER'



GREVILLEA LANIGERA 'COASTAL GEM'



BULBINE FRUTESCENS



LOMANDRA 'ARCTIC FROST'



DIETES 'SUNSTRIPE'



CISTUS 'VICTOR REITER'



SALVIA GREGGII 'PINK PREFERENCE'



ROSA 'PEACH DRIFT'



SALVIA GREGGII 'AMETHYST LIPS'

TREES, SHRUBS, GRASSES, & GROUNDCOVERS

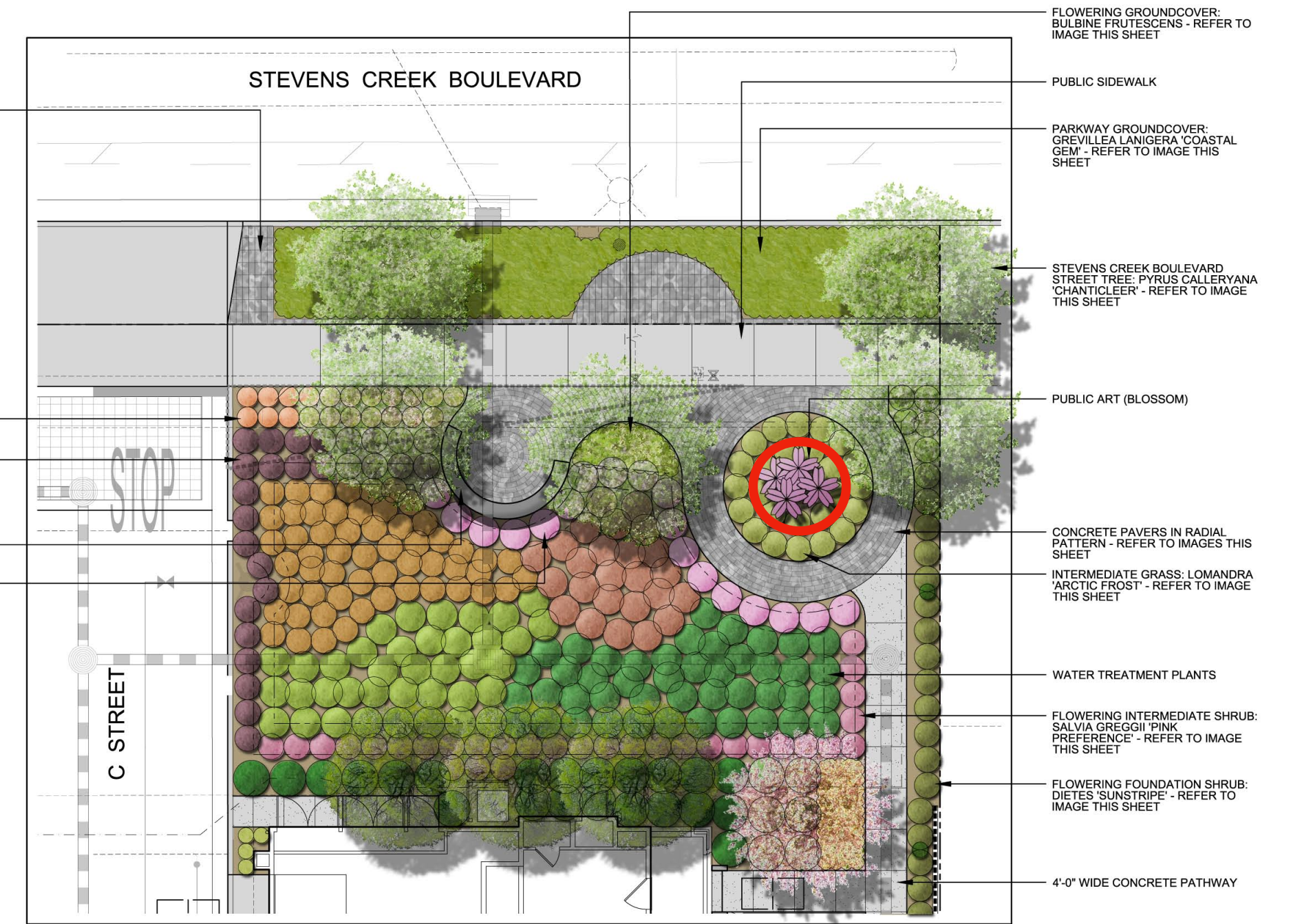
EXISTING CONCRETE PAVERS IN PARKWAY TO BE REMOVED AND REPURPOSED. RELOCATE AND INSTALL REPURPOSED PAVERS TO THE THE FOUR (4) 4'-0" WIDE BANDS ON EACH SIDE OF THE DRIVEWAYS FOR A STREET AND C STREET ALONG WITH AN AREA OFF THE PUBLIC SIDEWALK.

FLOWERING FOREGROUND SHRUB: ROSA 'PEACH DRIFT' - REFER TO IMAGE THIS SHEET

FLOWERING INTERMEDIATE SHRUB: SALVIA GREGGII 'AMETHYST LIPS' - REFER TO IMAGE THIS SHEET

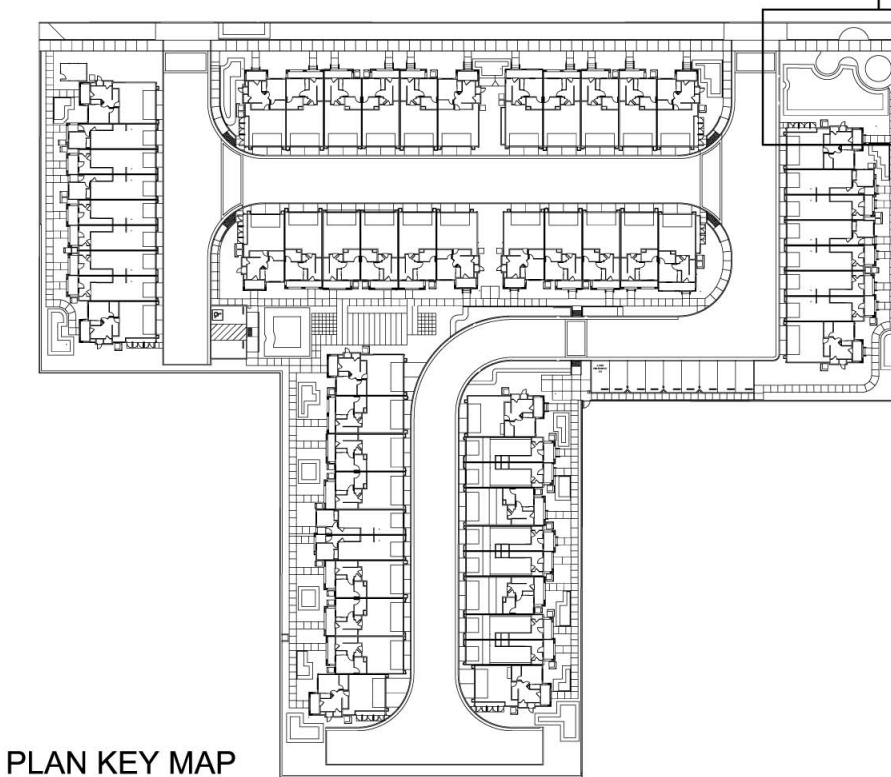
CAST-IN-PLACE CONCRETE SEATWALL WITH SKATE DETERRENTS

FLOWERING INTERMEDIATE SHRUB: CISTUS 'VICTOR REITER' - REFER TO IMAGE THIS SHEET



PLAZA ENLARGEMENT

Scale: 1/8"=1'-0"



STEVENS CREEK BOULEVARD PLAZA ILLUSTRATIVE

L.1.1



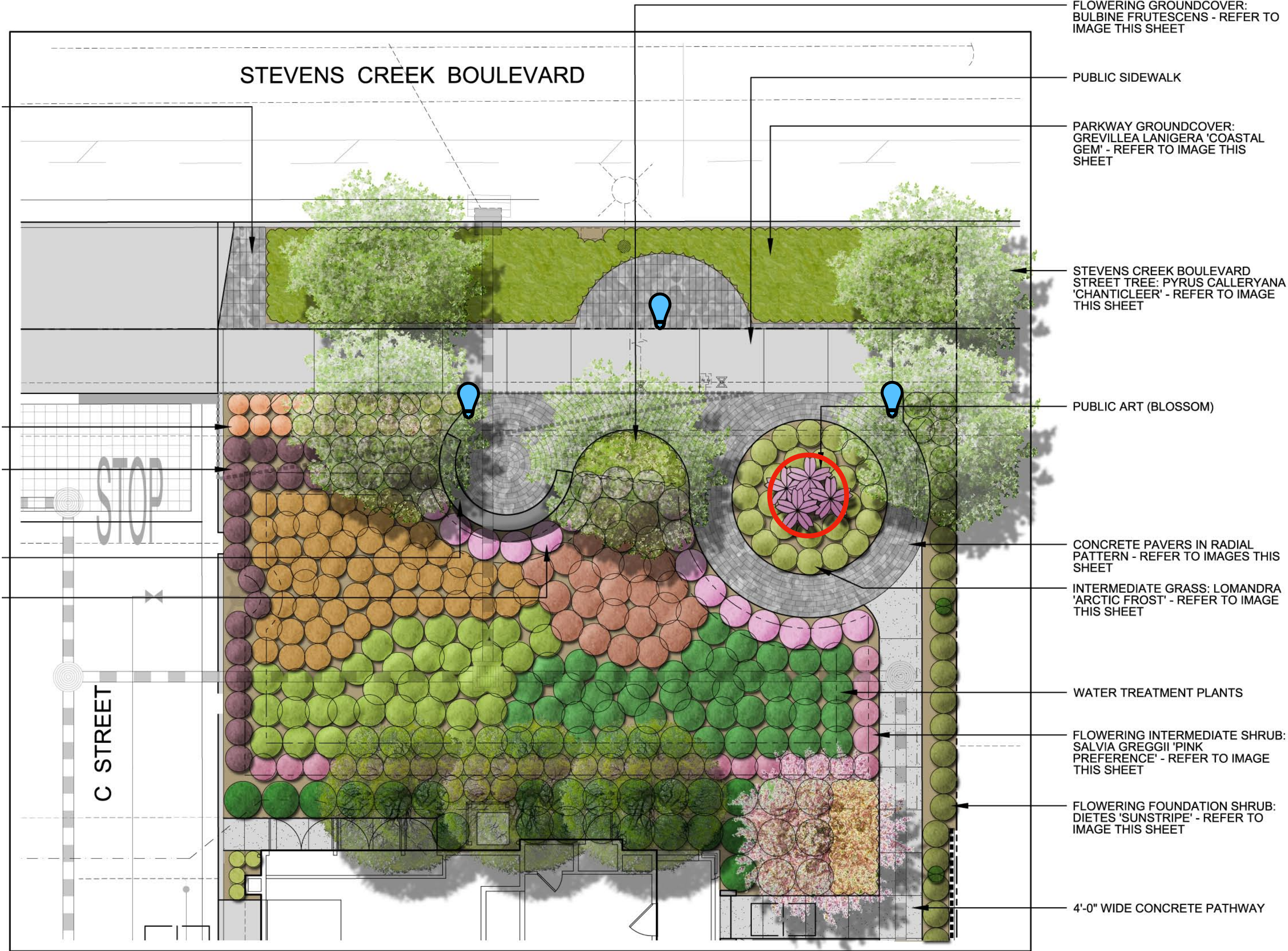
20840 STEVENS CREEK BOULEVARD
CUPERTINO, CA

FEBRUARY 2026

PLAZA LANDSCAPE PLAN

Artwork location

42" high LED bollard lights aiming down to illuminate walkway (approximate locations)



FLOWERING GROUNDCOVER: BULBINE FRUTESCENS - REFER TO IMAGE THIS SHEET

PUBLIC SIDEWALK

PARKWAY GROUNDCOVER: GREVILLEA LANIGERA 'COASTAL GEM' - REFER TO IMAGE THIS SHEET

STEVENS CREEK BOULEVARD STREET TREE: PYRUS CALLERYANA 'CHANTICLEER' - REFER TO IMAGE THIS SHEET

PUBLIC ART (BLOSSOM)

CONCRETE PAVERS IN RADIAL PATTERN - REFER TO IMAGES THIS SHEET

INTERMEDIATE GRASS: LOMANDRA 'ARCTIC FROST' - REFER TO IMAGE THIS SHEET

WATER TREATMENT PLANTS

FLOWERING INTERMEDIATE SHRUB: SALVIA GREGGII 'PINK PREFERENCE' - REFER TO IMAGE THIS SHEET

FLOWERING FOUNDATION SHRUB: DIETES 'SUNSTRIPE' - REFER TO IMAGE THIS SHEET

4'-0" WIDE CONCRETE PATHWAY


STEVENS CREEK BOULEVARD

C STREET

PLAZA ENLARGEMENT

Identifying Plaque

IDENTIFYING PLAQUE

 Plaque location (approximate)



IDENTIFYING PLAQUE

Plaque Design

WOWHAUS
(Scott Constable & Ene Oстераas-Constable)

Blossom, 2027

Weathering Steel, Stainless Steel, LED lighting, Polymer

Evoking vibrant cherry blossoms, *BLOSSOM* celebrates the rich agricultural history of Cupertino, where cherry orchards once thrived. Blooming beautifully each spring, cherry blossoms are symbols of renewal, hope and joy in many cultures.

Cast aluminum, 8" x 10"

Possible Finish Style:
Dark background



Mounting Approach:
On post within plantings

