

Library Commission and
Fine Arts Commission
Special Joint Meeting
November 3, 2021
Presentations

Item 1

Update on Donor Wall
and Art Wall

Joint Fine Arts and Library Commissions Special Meeting

November 3, 2021

Library Expansion Project Update



CUPERTINO

Library Expansion Project

Agenda

- **Introduction**
- **Project Status**
- **May 24th Joint Commission - Summary**
- **Design Update**

Project Status



Construction Progress



Construction Progress



Construction Progress



A photograph of an outdoor courtyard. On the left, there is a garden area with several raised beds made of dark metal, containing various green plants and herbs. A black metal fence runs along the back of the garden. In the center and right, there is a paved area with several tables and bright orange chairs, suggesting an outdoor dining or meeting space. A wooden bench is also visible. A tall, modern light pole stands in the courtyard. The background shows a building with large windows and a brick wall. The overall scene is a well-maintained outdoor space.

May 24th Joint Commission Meeting

Summary of Design Discussion

Donor & Art Walls

ART WALL

DONOR WALL



Courtyard – Donor Wall

Option 1: Stacked forms

Material Option: Illuminated Resin



Donor Wall Options

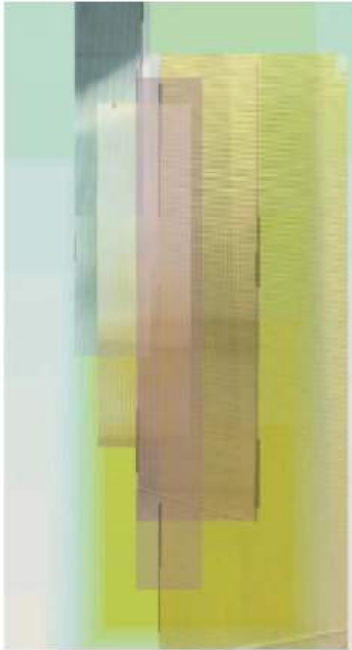


Option 1D:
Stacked forms
in metal or resin
tiles

Courtyard – Art Wall

Option 1: Verticality, Transparency, Color

Material Option: Stacked glass or resin



Art Wall Options



Option 1A:
Vertical and
stacked layers of
color in glass or
resin

Library Art Wall and Donor Wall

Design Progress
- ehdd -



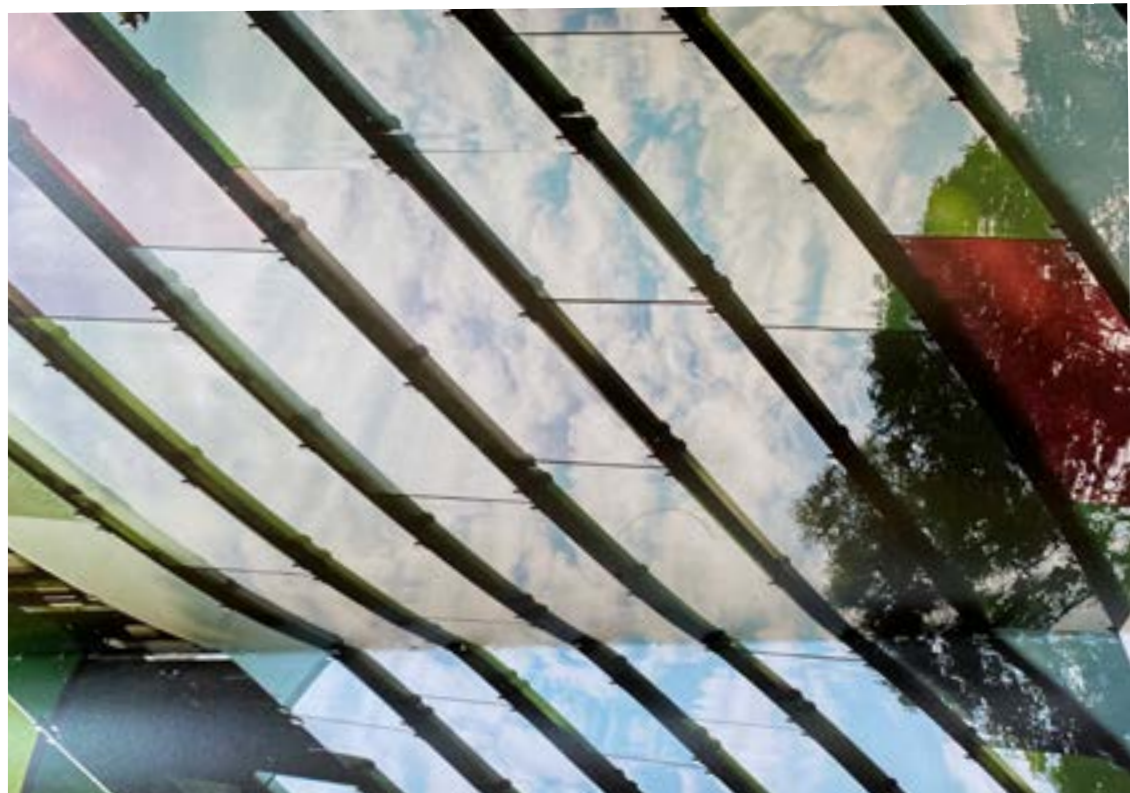
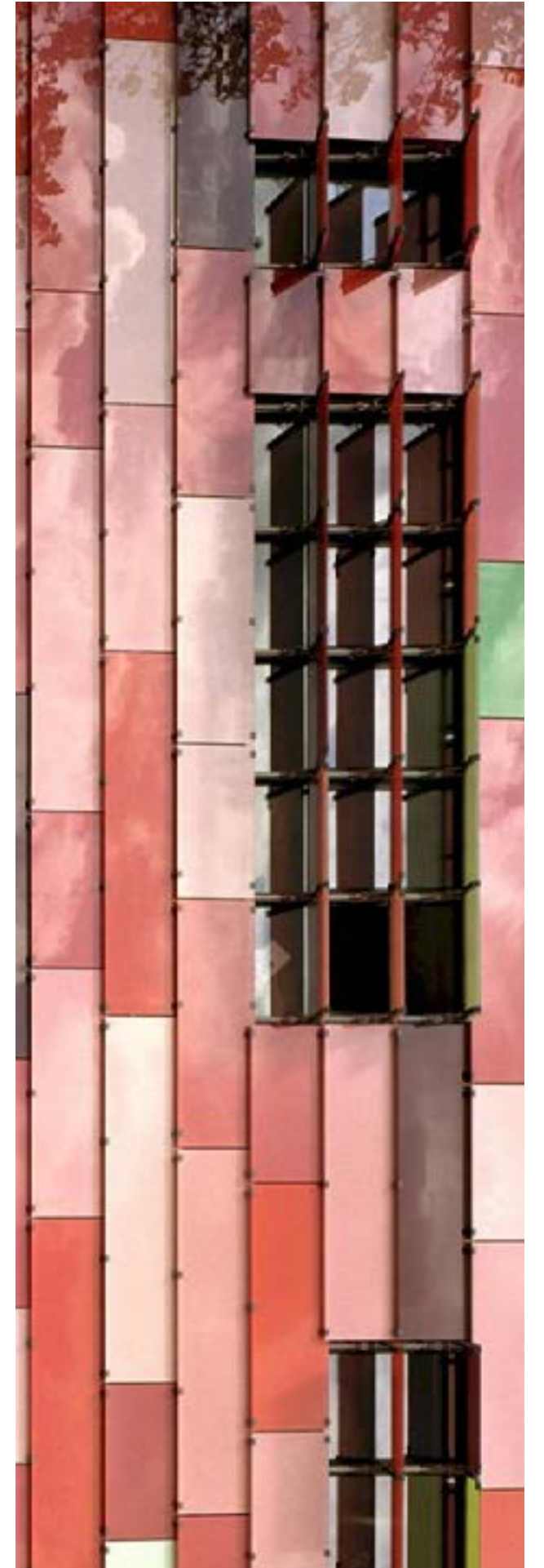
Cupertino Library Courtyard Art Wall Design Process

11/3/21

ehdd.

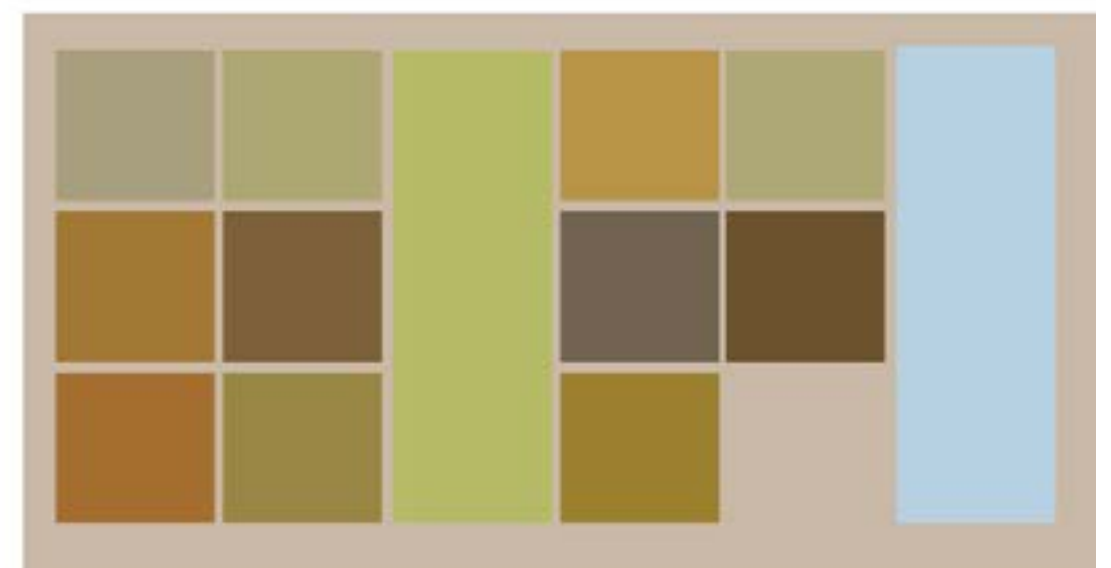
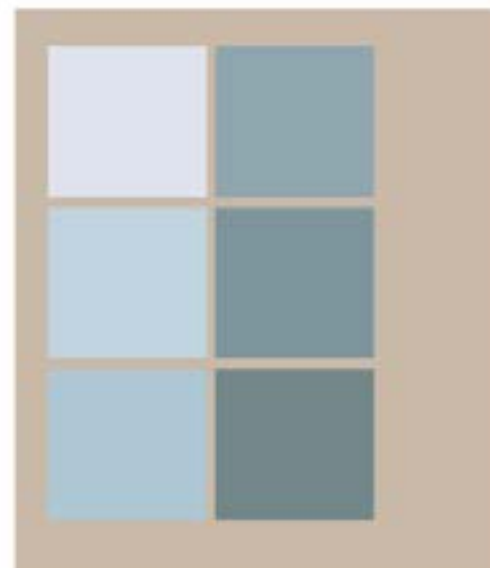


The verticality, canopy, and colors of the Library's beloved redwood grove informed the design and approach.





Color Thesis

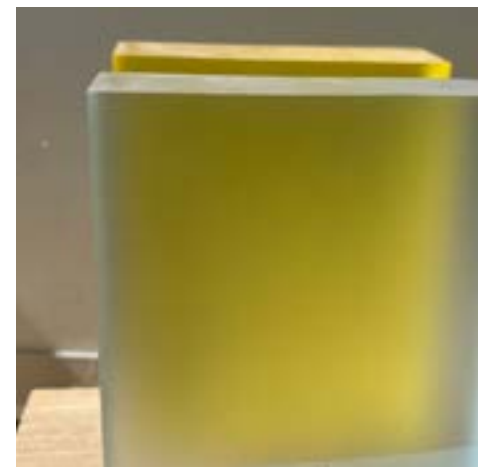
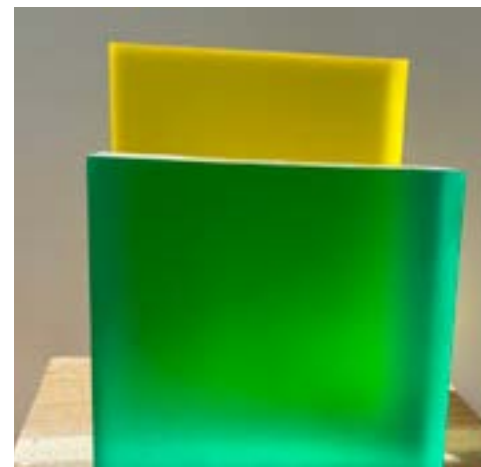
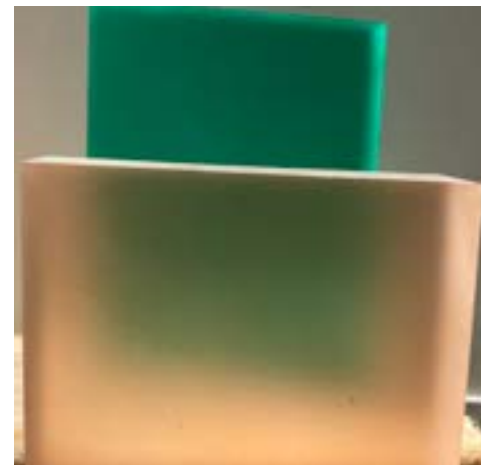
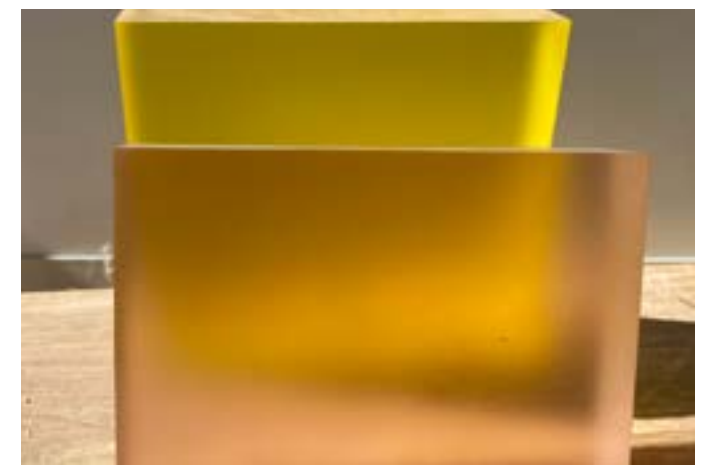




Design Study - Color + Light Mockups

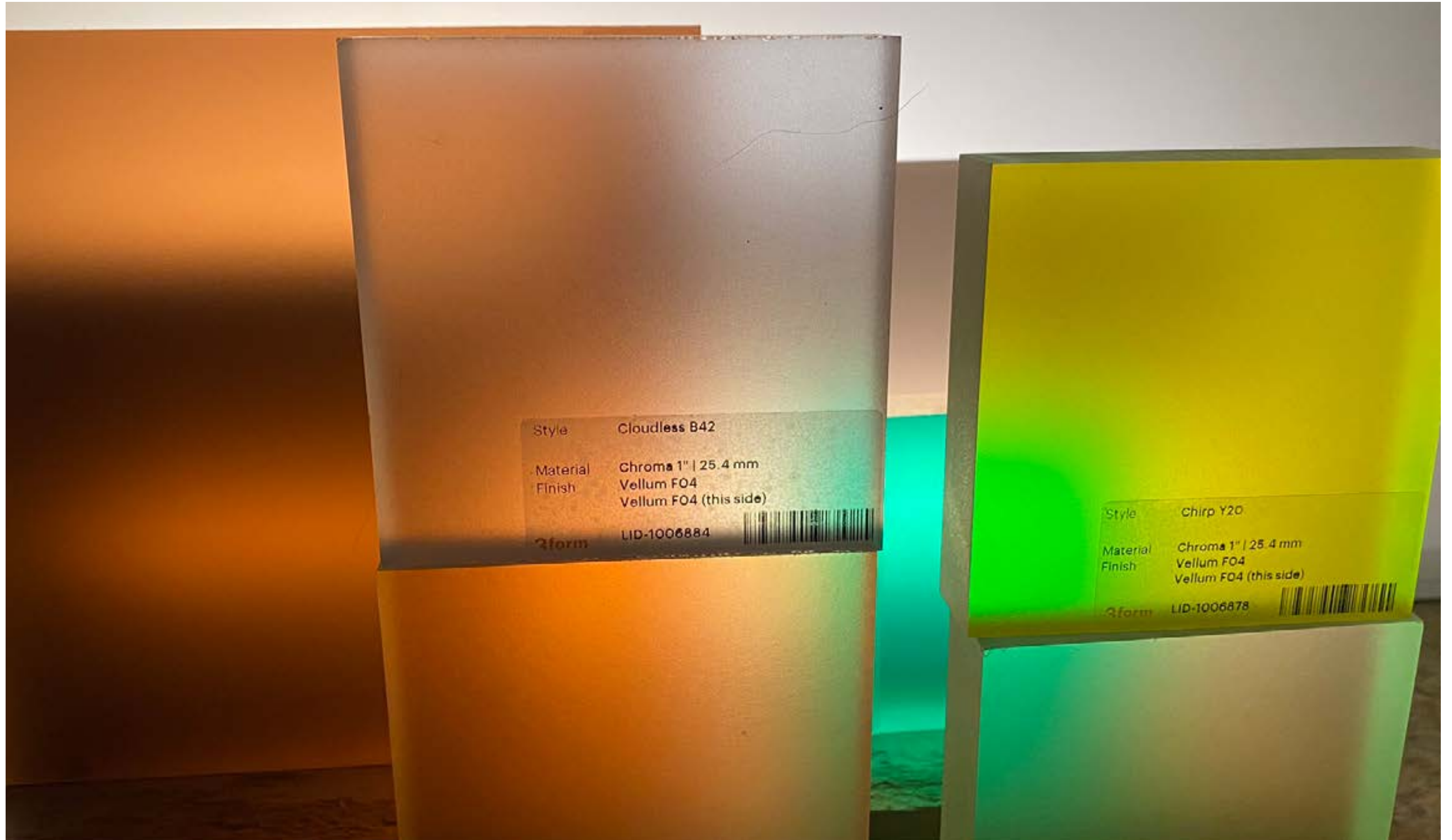


Design Study - Color + Light Mockups - Daytime

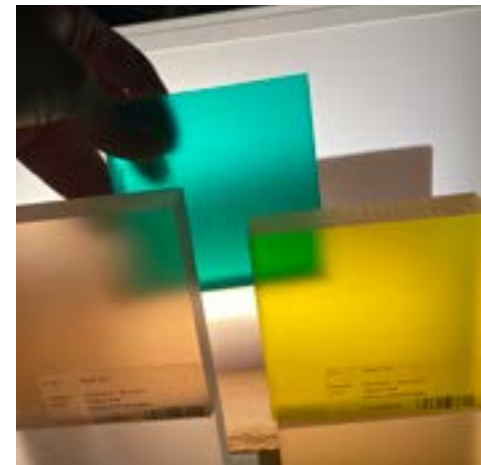
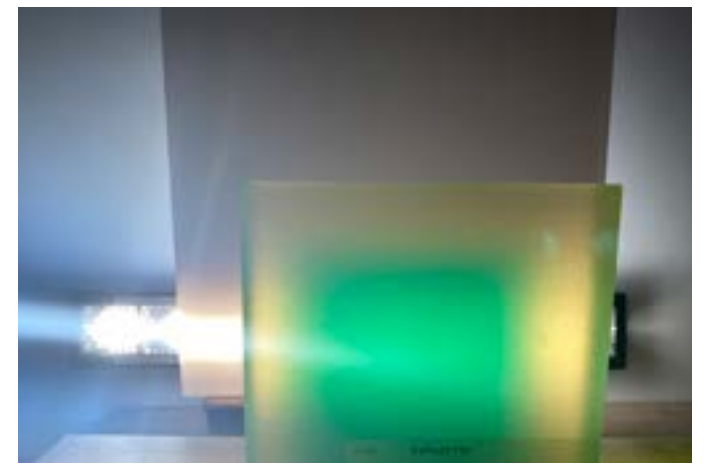
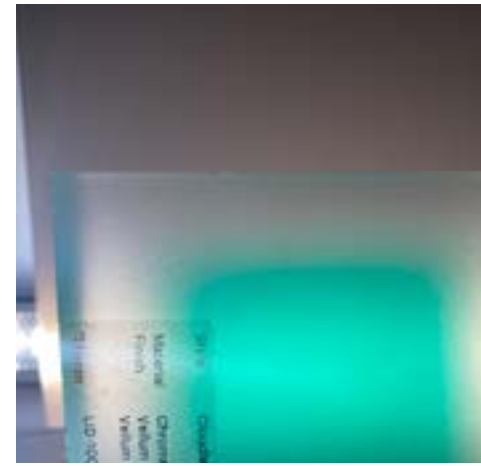




Design Study - Color + Light Mockups

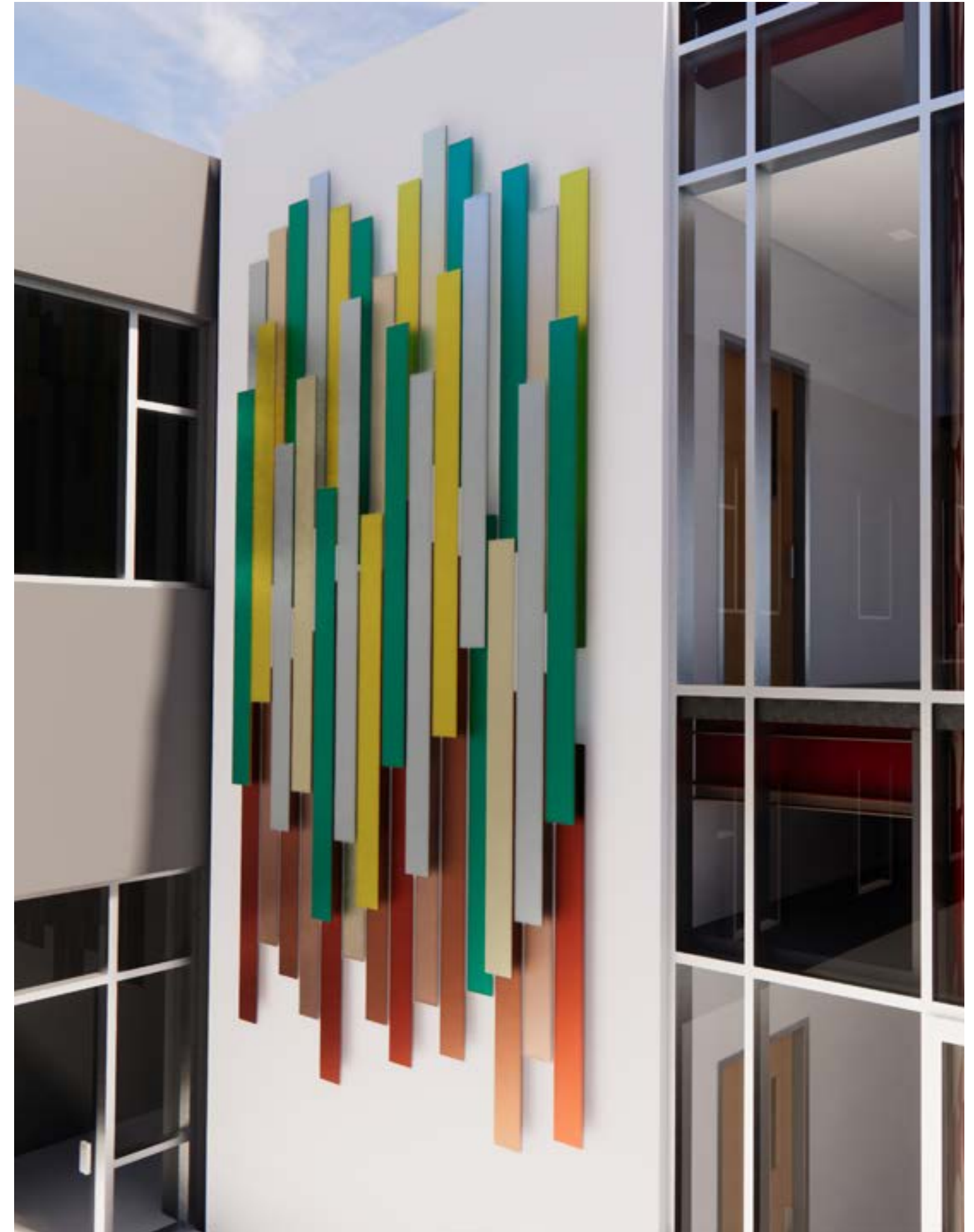


Design Study - Color + Light Mockups - Daytime





Transparent planes of color change and reflect the surroundings at different times of the day and from different angles--allowing Library patrons to enjoy the piece from different vantage points throughout the building and courtyard.





The project is designed to harmonize with the horizontal stacking and materiality of the donor wall.



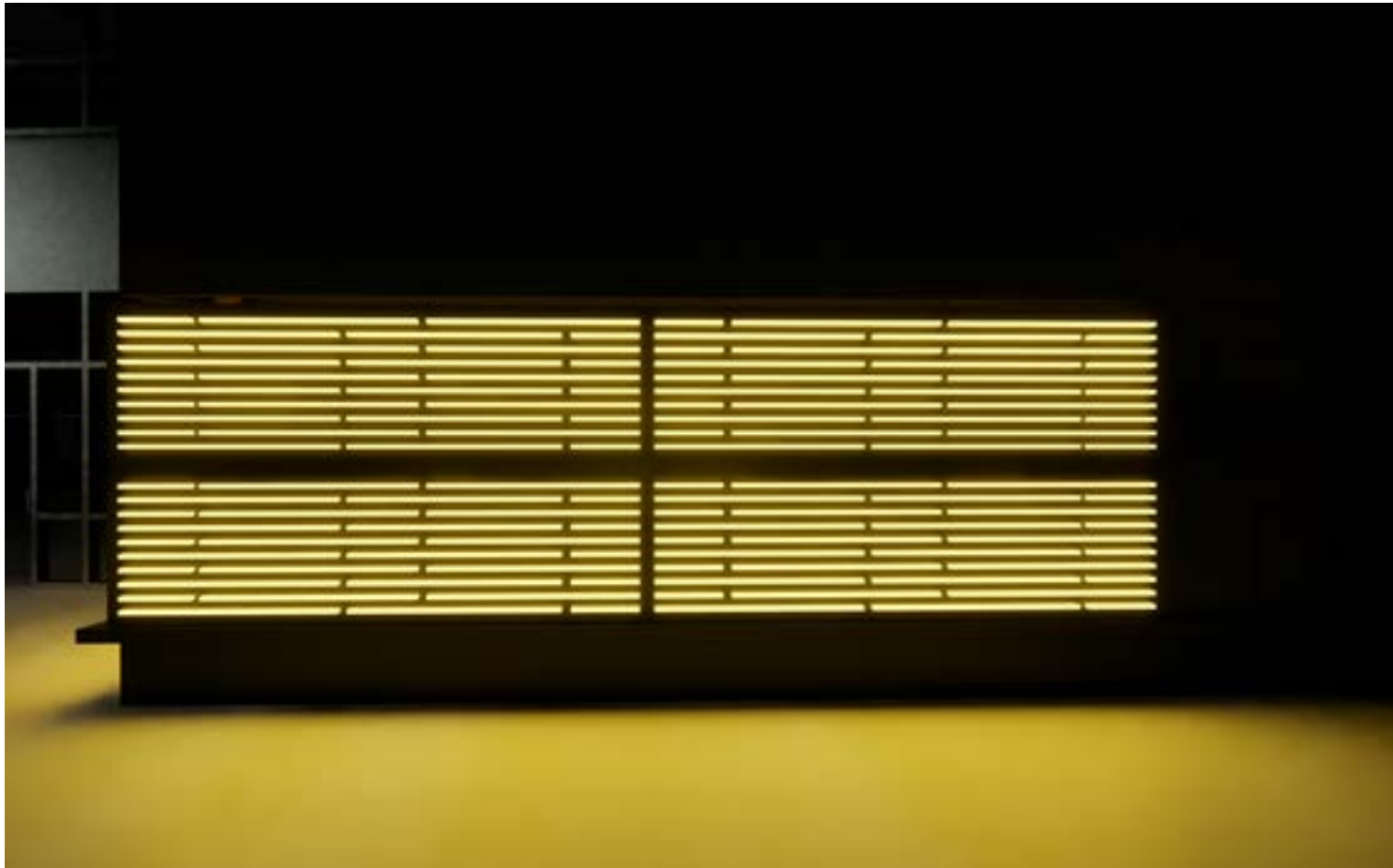
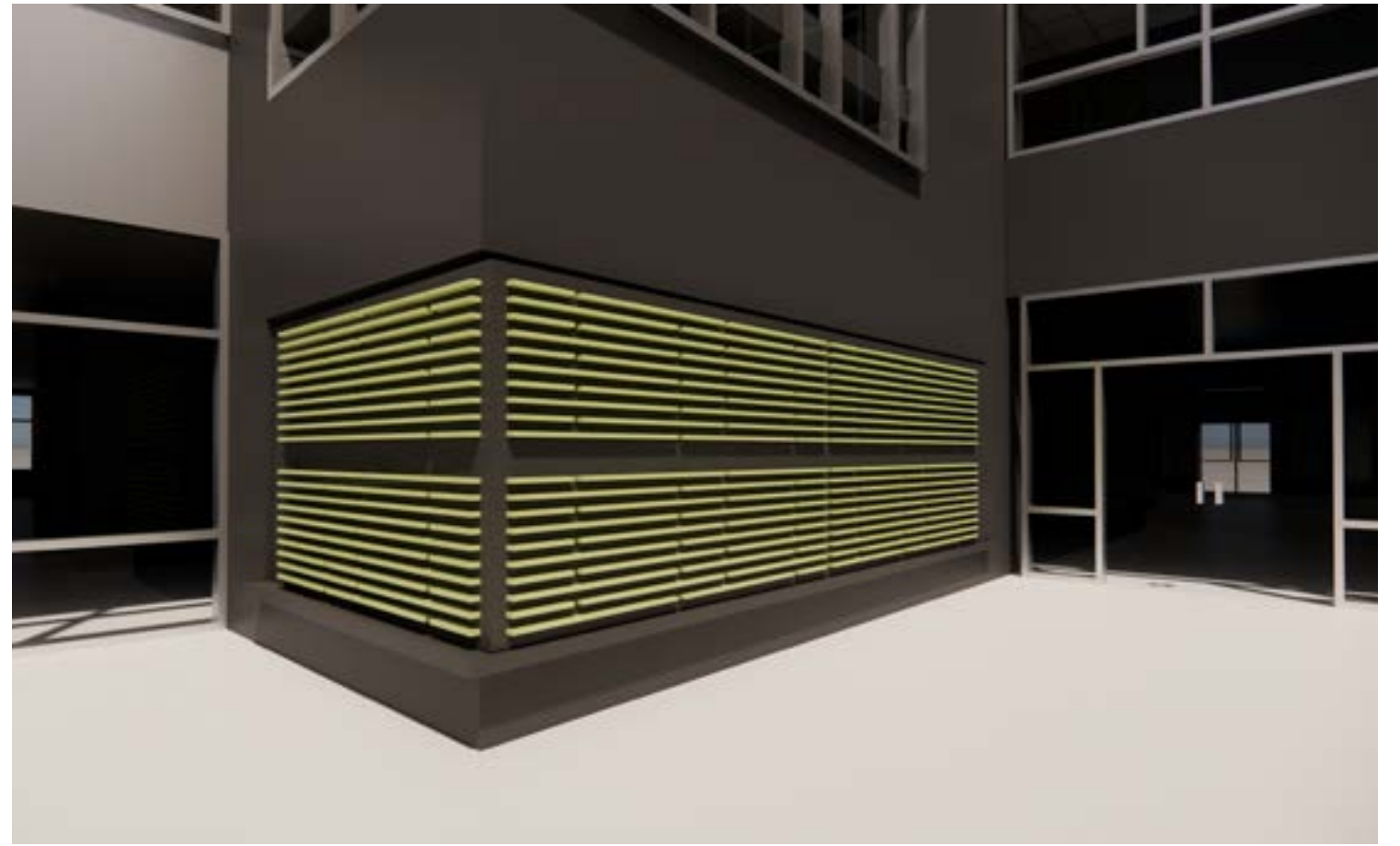
The experience of the art wall transforms from day to night when the illuminated pattern behind the overlapping panels appears.



ABCDEFGHIJK

The typographic voice is a san serif that contains classical proportions with a modern, minimal feel.

The Cupertino Library Donor Wall is inspired by the stacked minimalism of Donald Judd's sculptural gestures and is a nod to the form and content of the library shelving systems. Slender and translucent tiles wrap around the south and west-facing walls within the Library's Courtyard. Donor names are engraved in the tiles and are illuminated at night.







THANK YOU!

ehdd.