

Conceptual Artwork (for quoting purposes only)
 Technically Verified (design set)
 Updated to 2019 DID Specifications

- 1 ILLUM'D CHANNEL LETTERS - REMOTE**
AREA: 52.5 SF
- 2 DIRECTIONAL SIGNAGE - RENTAL OFFICE**
FCO LETTERS - CANOPY - NON-ILLUMINATED
AREA: 2.7 SF
- 3 ILLUM'D CHANNEL LETTERS - REMOTE**
(TRANSFER FROM EXISTING S.O. 114531 DALLAS RIVERFALLS)
AREA: 159.6 SF
- 4 DIRECTIONAL SIGNAGE - LOADING**
FCO LETTERS - CANOPY - NON-ILLUMINATED
AREA: 1.63 SF
- 5 DIRECTIONAL SIGNAGE - LOADING**
FCO LETTERS - CANOPY - NON-ILLUMINATED
AREA: 1.63 SF
- 6 ILLUM'D CHANNEL LETTERS - REMOTE**
AREA: 165.8 SF

BUILDING SIGNS					
SIGN #	ELEVATION	CODE ALLOWANCE	PROPOSED SQ FT	SIGN TYPE	COMMENTS
1		FOLLOWS MSP	81.0 SF	ILLUM'D CHAN. LTRS	
8	BUILDING '1' - EAST ELEVATION	FOLLOWS MSP	25.2 SF	WINDOW VINYL	RENTAL OFFICE WINDOWS
13		FOLLOWS MSP	3.5 SF	DOOR VINYL	RENTAL OFFICE DOOR
3	BUILDING '1' - NORTH ELEVATION	FOLLOWS MSP	159.6 SF	ILLUM'D CHAN. LTRS	TRANSFER EXISTING CLS FROM S.O. 114531.
9		FOLLOWS MSP	2.5 SF	DOOR VINYL	LOADING ZONE DOOR
6	BUILDING '2' - NORTH ELEVATION	FOLLOWS MSP	165.8 SF	ILLUM'D CHAN. LTRS	
10		FOLLOWS MSP	2.5 SF	DOOR VINYL	LOADING ZONE DOOR

DIRECTIONAL SIGNS					
SIGN #	ELEVATION	CODE ALLOWANCE	PROPOSED SQ FT	SIGN TYPE	COMMENTS
2	BLDG '1' E. ELEVATION ENTRY CANOPY FACE	EXEMPT FROM PERMIT REQUIREMENTS NTE 4 SF AREA	2.7 SF	NON-ILLUM'D FCO LTRS	
4	BLDG '1' N. ELEVATION LOADING CANOPY FACE		1.6 SF	NON-ILLUM'D FCO LTRS	
5	BLDG '2' N. ELEVATION LOADING CANOPY FACE		1.6 SF	NON-ILLUM'D FCO LTRS	

SITE PLAN
SCALE: 1"=120'-0"

CMC Section 19.104.230: Illumination Restrictions:

A. The intensity of illumination for signs located within the commercial, office and industrial districts shall not exceed approximately two hundred fifty foot-lamberts. All other districts shall not exceed approximately one hundred foot-lamberts. The foot-lambert readings shall be used as a guide by staff to evaluate signs which are deemed to be a problem to passing motorists or residents in the surrounding neighborhood.

B. The color and thickness of the sign panels as well as the brightness of the bulbs used to illuminate the sign shall be designed in such a manner as to avoid excessive illumination and glare.

C. Illuminated signs which are not a necessary part of the security lighting system for a business shall be turned off at eleven p.m. or within two hours after the business is closed, whichever is the later time.

D. All exterior lighting shall be placed in a manner so that the light source will not be seen from off the site.

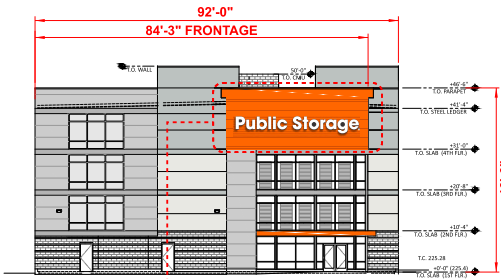
DESIGN #: TG-0068-19

It is the intent and purpose of this color rendering to provide a basic color representation of your sign finish and color. However, digital media and printed colors will vary from actual paint finish and color. Existing painted surfaces will have a perceptible difference in shade and sheen from your sign finish. Providing a sample of the paint you wish to match or a Matthews paint color formula will minimize the differences.

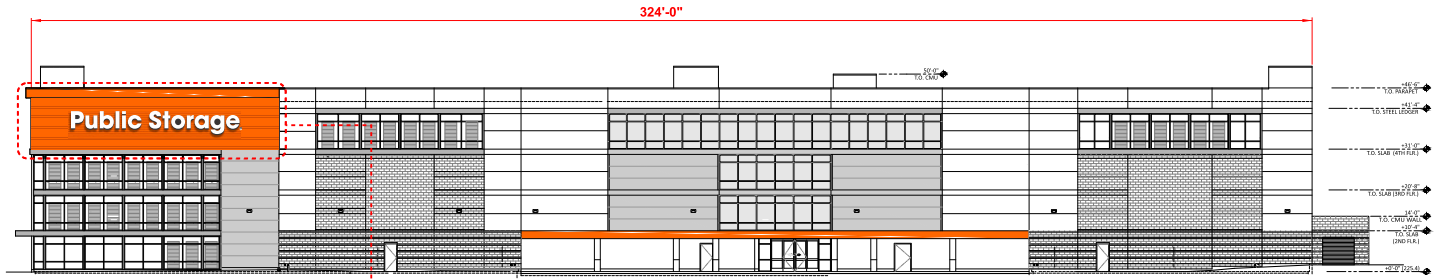
16265 Star Road Nampa, ID 83687 toll free: 800.592.8058 tele: 208.345.4020 fax: 208.336.9886 www.imagenational.com

	PROJECT TITLE:	LOCATION:	REQUESTED BY:		NAMPA PLANT - UL #433195-001	page # 1 of 7
	PUBLIC STORAGE	SITE #20114 20565 VALLEY GREEN DR., CUPERTINO, CA 95014	J.G.			
			DRAWN BY:			
			DF / TRH / RR / RA / Dave J			
			COMPUTER FILE INCLUDING DATE:			
			PBS-20114-CupertinoCA-R16-071922			

© 2016 Image National Signs. This design is an original work of authorship by Image National, Inc. (Image) which owns the copyright protection by the copyright law of the United States (Title 17, U.S. Code). All rights are reserved by image and, until the use of this design is authorized by image in writing, image owns the exclusive rights to: a) reproduce this design in copies, in graphic form or as a sign; b) prepare derivative works based upon the design; c) distribute copies of the design by sale or other transfer of ownership; and d) display the design publicly.

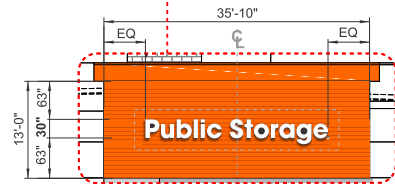


BUILDING 1 - EAST ELEVATION
SCALE: 1"=30'-0"



BUILDING 1 - NORTH ELEVATION
SCALE: 1"=30'-0"

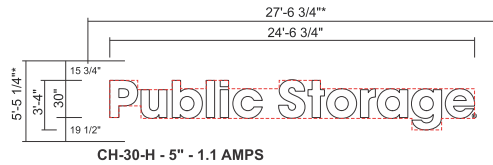
NOTE: UPDATED ELEVATIONS PROVIDED BY KSP ARE NOT COLORED - COLOR IS SHOWN IN SIGN AREAS FOR THIS PROPOSAL



1 PLACEMENT DETAIL
SCALE: 1/16"=1'-0"

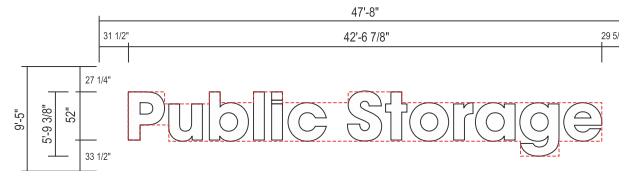


3 PLACEMENT DETAIL
SCALE: 1/16"=1'-0"



1 ILLUM'D CHANNEL LETTERS - REMOTE
SCALE: 1/8" = 1'-0"
AREA: 52.5 SF
*MIN. CLEAR SPACE

NOTE: SIZE IS PER CODE THIS ELEVATION



3 ILLUM'D CHANNEL LETTERS - REMOTE
SCALE: 3/32" = 1'-0"
AREA: 159.6 SF
*MIN. CLEAR SPACE

ILLUMINATION INTENSITY:
88.8 FOOT LAMBERTS

**NOTE:
TRANSFER EXISTING CLS
FROM S.O. 115431
DALLAS-RIVERFALLS**

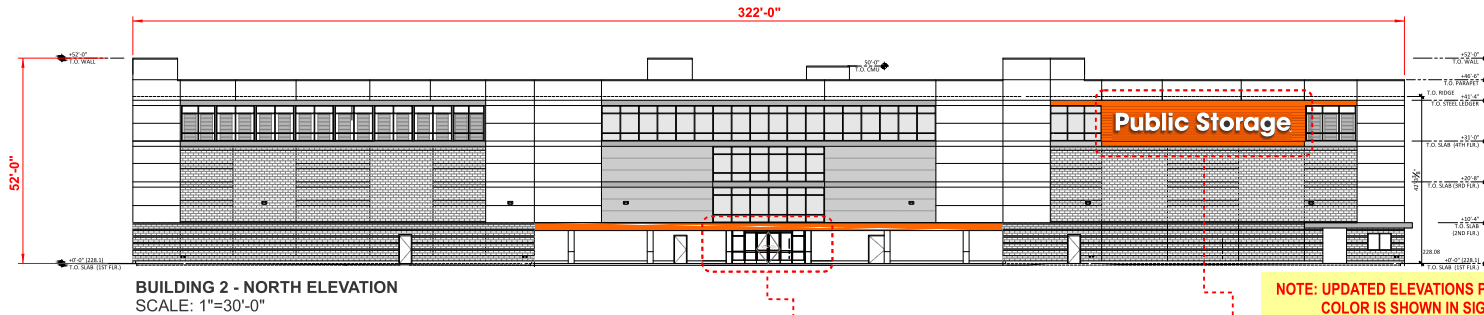
Special Notes

INSTALLER TO ADD ADDITIONAL LEADS A/R FOR POWER SUPPLIES TO BE MOUNTED IN HALLWAY

It is the intent and purpose of this color rendering to provide a basic color representation of your sign finish and color. However, digital media and printed colors will vary from actual paint finish and color. Existing painted surfaces will have a perceptible difference in shade and sheen from your sign finish. Providing a sample of the paint you wish to match or a Matthews paint color formula will minimize the differences.

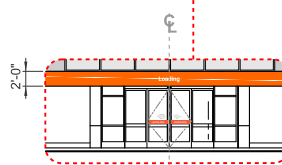
16265 Star Road Nampa, ID 83687 toll free: 800.592.8058 tele: 208.345.4020 fax: 208.336.9886 www.imagenational.com

	PROJECT TITLE:	LOCATION:	REQUESTED BY:		NAMPA PLANT - UL #433195-001
	PUBLIC STORAGE	SITE #20114 20565 VALLEY GREEN DR., CUPERTINO, CA 95014	J.G.		
			DRAWN BY:		<small>U.S. & PR - All signs conform to UL-90 (UL labeled accordingly) & must comply with UL-914 local procedures. Canada - all signs must be C-UL compliant. This sign is intended to be installed in accordance with the requirements of Article 606 of the National Electrical Code and/or applicable local codes. This includes proper grounding and bonding of the sign.</small>
			COMPUTER FILE INCLUDING DATE:	PBS-20114-CupertinoCA-R16-071922	

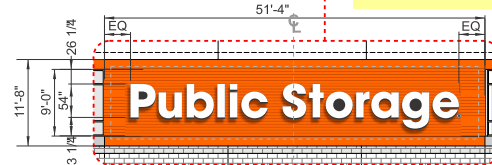


BUILDING 2 - NORTH ELEVATION
SCALE: 1"=30'-0"

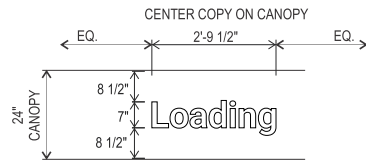
NOTE: UPDATED ELEVATIONS PROVIDED BY KSP ARE NOT COLORED - COLOR IS SHOWN IN SIGN AREAS FOR THIS PROPOSAL



5 PLACEMENT DETAIL
SCALE: 1/16"=1'-0"

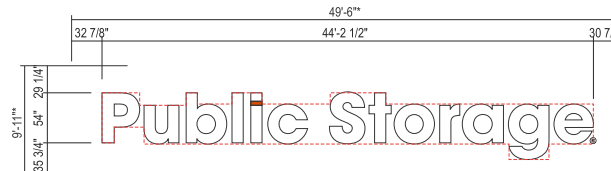


6 PLACEMENT DETAIL
SCALE: 1/16"=1'-0"



5 DIRECTIONAL SIGNAGE - LOADING
FCO LETTERS - CANOPY - NON-ILLUMINATED
SCALE: 3/8"=1'-0"
AREA: 1.63 SF

1/2" THICK WHITE ACRYLIC CUT OUT LETTERS WITH FIRST SURFACE REFLECTIVE WHITE VINYL
INSTALL ON FACE OF CANOPY WITH STUDS



CH-54-H - 5" - 2.2 AMPS

6 ILLUM'D CHANNEL LETTERS - REMOTE

SCALE: 3/32" = 1'-0"
AREA: 165.8 SF
*MIN. CLEAR SPACE

ILLUMINATION INTENSITY:
88.8 FOOT LAMBERTS

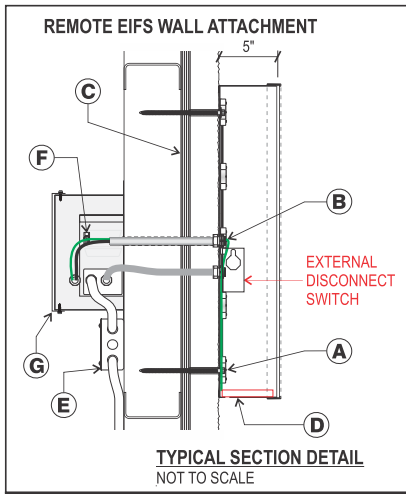
Special Notes

INSTALLER TO ADD ADDITIONAL LEADS A/R FOR POWER SUPPLIES TO BE MOUNTED IN HALLWAY

It is the intent and purpose of this color rendering to provide a basic color representation of your sign finish and color. However, digital media and printed colors will vary from actual paint finish and color. Existing painted surfaces will have a perceptible difference in shade and sheen from your sign finish. Providing a sample of the paint you wish to match or a Matthews paint color formula will minimize the differences.

16265 Star Road Nampa, ID 83687 toll free: 800.592.8058 tele: 208.345.4020 fax: 208.336.9886 www.imagenational.com

	PROJECT TITLE:	PUBLIC STORAGE	REQUESTED BY:	J.G.		NAMPA PLANT - UL #433195-001	page # 3 of 7
	LOCATION:	SITE #20114 20565 VALLEY GREEN DR., CUPERTINO, CA 95014	DRAWN BY:	DF / TRH / RR / RA / Dave J			
U.S. & PR - All signs conform to UL-90 (UL labeled accordingly) & must comply with UL-41 (UL listed) procedures. Canopy - all signs must be CAS compliant. This sign is intended to be installed in accordance with the requirements of Article 606 of the National Electrical Code and/or applicable local codes. This includes proper grounding and bonding of the sign.			COMPUTER FILE INCLUDING DATE:	PBS-20114-CupertinoCA-R16-071922			



I N S T A L L

- A. SEE FASTENER SCHEDULE BELOW
- B. 1/2" (MFG) Plastic Pass-Through
- C. Plywood Sheathing / Blocking as Required per Location
- D. 1/4" Weep Holes **With Baffles** as Required
- E. 20 amp 120 V. Circuits Required (Supplied by Others Than Image National)
- F. Disconnect Switch Required at Letter / Transformer Box
- G. Wire Cover -.063 Aluminum (Supplied by Installer)

APPROVED FASTENER SCHEDULE

	3/16" X 4 1/2" LAG SCREW	FOR USE WITH WOOD OR EIFS WALL SYSTEMS. 2 1/2" MIN PENETRATION (EXCLUDING TIP)
--	--------------------------	--

NOTE:
ANY PENETRATIONS ABOVE ROOFLINE OR EXPOSED, ARE REQUIRED TO BE INSTALLED USING SEALTIGHT AND WEATHER PROOF BOXES. TO BE PROVIDED BY SIGN INSTALLER.



1 ILLUM'D CHANNEL LETTERS - REMOTE
SCALE: 1/4" = 1'-0"

BUILDING 1 EAST ELEVATION:
ATTACH WITH 3/16" X 4 1/2" WOOD SCREWS

NOTE:
20' LEADS REQUIRED

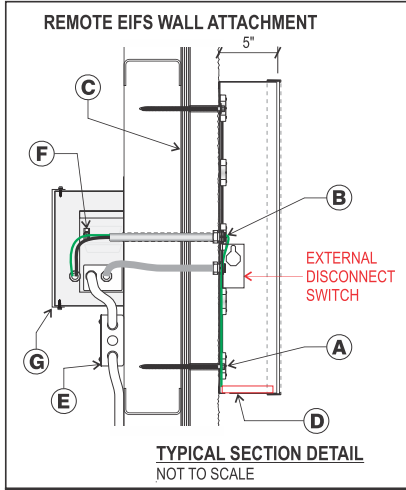
1 LETTER FACE: MATERIAL: 3/16" CLEAR ACRYLIC OR .150 CLEAR POLYCARBONATE FIRST SURFACE 3M 3635-70 DIFFUSER FILM & 3660 CLEAR OVERLAMINATE FILM	2 RETURNS: MATERIAL: 5" .040 OR .050 PRE-PAINTED BLACK ALUMINUM	3 TRIM CAP: MATERIAL: 1" JEWELITE COLOR: BLACK
4 BACKS: MATERIAL: PRE-PAINTED WHITE 3MM ACM PANELS	5 ILLUMINATION: MATERIAL: GE WHITE L.E.D. ILLUMINATION	6 ELECTRICAL: REMOTE. T.B.D. AMPS @ 120 V.

It is the intent and purpose of this color rendering to provide a basic color representation of your sign finish and color. However, digital media and printed colors will vary from actual paint finish and color. Existing painted surfaces will have a perceptible difference in shade and sheen from your sign finish. Providing a sample of the paint you wish to match or a Matthews paint color formula will minimize the differences.

16265 Star Road Nampa, ID 83687 toll free: 800.592.8058 tele: 208.345.4020 fax: 208.336.9886 www.imagenational.com

	PROJECT TITLE:	LOCATION:	REQUESTED BY:		NAMPA PLANT - UL #433195-001	page # 4 of 7
	PUBLIC STORAGE	SITE #20114 20565 VALLEY GREEN DR., CUPERTINO, CA 95014	J.G. DRAWN BY: DF / TRH / RR / RA / Dave J COMPUTER FILE INCLUDING DATE: PBS-20114-CupertinoCA-R16-071922			

U.S. & CAN. - All signs conform to UL-910 (UL labeled accordingly) & must comply with UL-910 local procedures. Canada - all signs must be CAS compliant. This sign is intended to be installed in accordance with the requirements of Article 606 of the National Electrical Code and/or applicable local codes. This includes proper grounding and bonding of the sign.



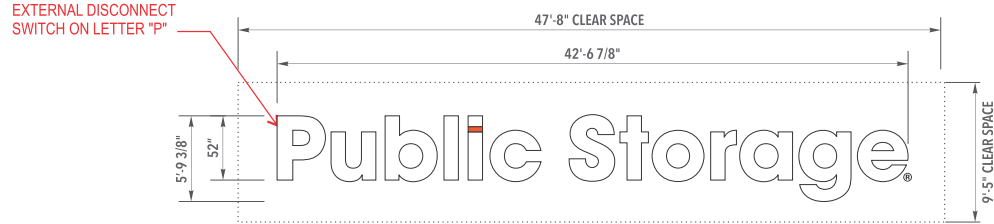
I N S T A L L

- A. SEE FASTENER SCHEDULE BELOW
- B. 1/2" (MFG) Plastic Pass-Through
- C. Plywood Sheathing / Blocking as Required per Location
- D. 1/4" Weep Holes **With Baffles** as Required
- E. 20 amp 120 V. Circuits Required (Supplied by Others Than Image National)
- F. Disconnect Switch Required at Letter / Transformer Box
- G. Wire Cover - .063 Aluminum (Supplied by Installer)

APPROVED FASTENER SCHEDULE

	3/16" X 3" TAPCONS	FOR USE WITH CONCRETE BLOCK, BRICK OR CONCRETE 2 1/2" MIN EMBEDMENT (EXCLUDING TIP)
--	--------------------	--

NOTE:
ANY PENETRATIONS ABOVE ROOFLINE OR EXPOSED, ARE REQUIRED TO BE INSTALLED USING SEALTIGHT AND WEATHER PROOF BOXES. TO BE PROVIDED BY SIGN INSTALLER.



3 ILLUM'D CHANNEL LETTERS - REMOTE
SCALE: 1/8" = 1'-0"

BUILDING 1 NORTH ELEVATION:
ATTACH WITH 3/16" X 3" TAPCONS

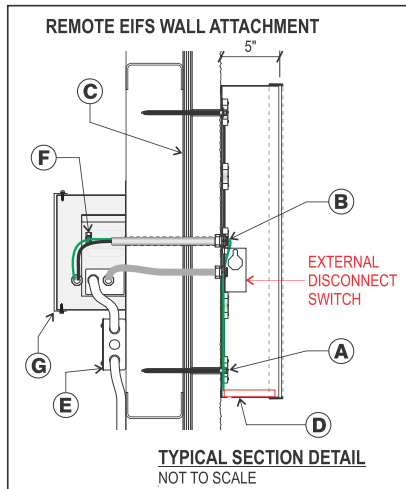
NOTE:
20' LEADS REQUIRED

<p>1 LETTER FACE: MATERIAL: 3/16" CLEAR ACRYLIC OR .150 CLEAR POLYCARBONATE FIRST SURFACE 3M 3635-70 DIFFUSER FILM & 3660 CLEAR OVERLAMINATE FILM</p>	<p>2 RETURNS: MATERIAL: 5" .040 OR .050 PRE-PAINTED BLACK ALUMINUM</p>	<p>3 TRIM CAP: MATERIAL: 1" JEWELITE COLOR: BLACK</p>
<p>4 BACKS: MATERIAL: PRE-PAINTED WHITE 3MM ACM PANELS</p>	<p>5 ILLUMINATION: MATERIAL: GE WHITE L.E.D. ILLUMINATION</p>	<p>6 ELECTRICAL: REMOTE. T.B.D. AMPS @ 120 V.</p>

It is the intent and purpose of this color rendering to provide a basic color representation of your sign finish and color. However, digital media and printed colors will vary from actual paint finish and color. Existing painted surfaces will have a perceptible difference in shade and sheen from your sign finish. Providing a sample of the paint you wish to match or a Matthews paint color formula will minimize the differences.

16265 Star Road Nampa, ID 83687 toll free: 800.592.8058 tele: 208.345.4020 fax: 208.336.9886 www.imagenational.com

<p>...bringing your image to light!</p>	<p>PROJECT TITLE: PUBLIC STORAGE</p>	<p>LOCATION: SITE #20114 20565 VALLEY GREEN DR., CUPERTINO, CA 95014</p>	<p>REQUESTED BY: J.G.</p> <p>DRAWN BY: DF / TRH / RR / RA / Dave J</p> <p>COMPUTER FILE INCLUDING DATE: PBS-20114-CupertinoCA-R16-071922</p>	<p>NAMPA PLANT - UL #433195-001</p> <p><small>U.S. & CAN. - All Signs conform to UL-910 (UL labeled accordingly) & must comply with UL-419 (UL listed) procedures. Canada - all signs must be CAS compliant. This sign is intended to be installed in accordance with the requirements of Article 606 of the National Electrical Code and/or applicable local codes. This includes proper grounding and bonding of the sign.</small></p>	<p>page # 5 of 7</p>
	<p>© 2016 image national signs. This design is an original work of authorship by Image National, Inc. (image) which owns the copyright protection by the copyright law of the United States (Title 17, U.S. Code). All rights are reserved by image and, until the use of this design is authorized by image in writing, image owns the exclusive rights to: a) reproduce this design in copies, in graphic form or as a sign; b) prepare derivative works based upon the design; c) distribute copies of the design by sale or other transfer of ownership; and d) display the design publicly.</p>				



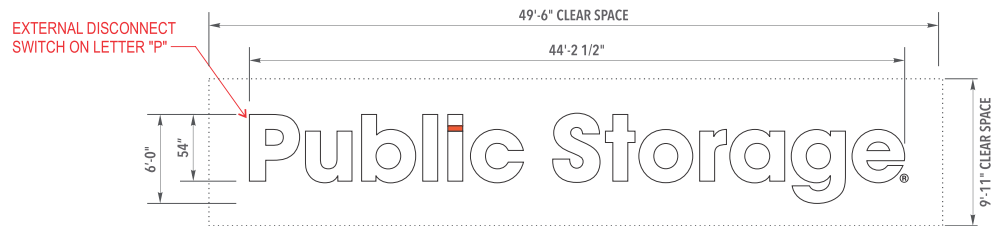
I N S T A L L

- A. SEE FASTENER SCHEDULE BELOW
- B. 1/2" (MFG) Plastic Pass-Through
- C. Plywood Sheathing / Blocking as Required per Location
- D. 1/4" Weep Holes **With Baffles** as Required
- E. 20 amp 120 V. Circuits Required
(Supplied by Others Than Image National)
- F. Disconnect Switch Required at Letter / Transformer Box
- G. Wire Cover - .063 Aluminum (Supplied by Installer)

APPROVED FASTENER SCHEDULE

	3/16" X 3" TAPCONS	FOR USE WITH CONCRETE BLOCK, BRICK OR CONCRETE 2 1/2" MIN EMBEDMENT (EXCLUDING TIP)
--	--------------------	--

NOTE:
ANY PENETRATIONS ABOVE ROOFLINE OR EXPOSED, ARE REQUIRED TO BE INSTALLED USING SEALTIGHT AND WEATHER PROOF BOXES. TO BE PROVIDED BY SIGN INSTALLER.



6 ILLUM'D CHANNEL LETTERS - REMOTE
SCALE: 1/8" = 1'-0"

BUILDING 2 NORTH ELEVATION:
ATTACH WITH 3/16" X 3" TAPCONS

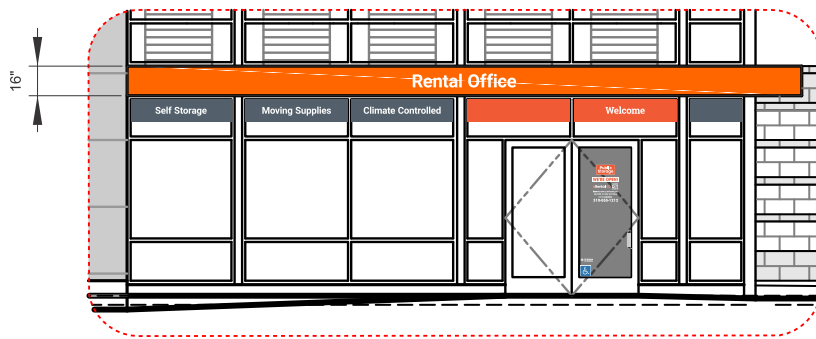
NOTE:
20' LEADS REQUIRED

<p>1 LETTER FACE: MATERIAL: 3/16" CLEAR ACRYLIC OR .150 CLEAR POLYCARBONATE FIRST SURFACE 3M 3635-70 DIFFUSER FILM & 3660 CLEAR OVERLAMINATE FILM</p>	<p>2 RETURNS: MATERIAL: 5" .040 OR .050 PRE-PAINTED BLACK ALUMINUM</p>	<p>3 TRIM CAP: MATERIAL: 1" JEWELITE COLOR: BLACK</p>
<p>4 BACKS: MATERIAL: PRE-PAINTED WHITE 3MM ACM PANELS</p>	<p>5 ILLUMINATION: MATERIAL: GE WHITE L.E.D. ILLUMINATION</p>	<p>6 ELECTRICAL: REMOTE. T.B.D. AMPS @ 120 V.</p>

It is the intent and purpose of this color rendering to provide a basic color representation of your sign finish and color. However, digital media and printed colors will vary from actual paint finish and color. Existing painted surfaces will have a perceptible difference in shade and sheen from your sign finish. Providing a sample of the paint you wish to match or a Matthews paint color formula will minimize the differences.

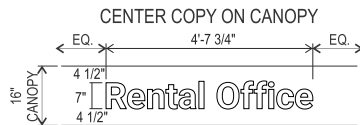
16265 Star Road Nampa, ID 83687 toll free: 800.592.8058 tele: 208.345.4020 fax: 208.336.9886 www.imagenational.com

	PROJECT TITLE:	LOCATION:	REQUESTED BY:		NAMPA PLANT - UL #433195-001	page #
	PUBLIC STORAGE	SITE #20114 20565 VALLEY GREEN DR., CUPERTINO, CA 95014	J.G.			



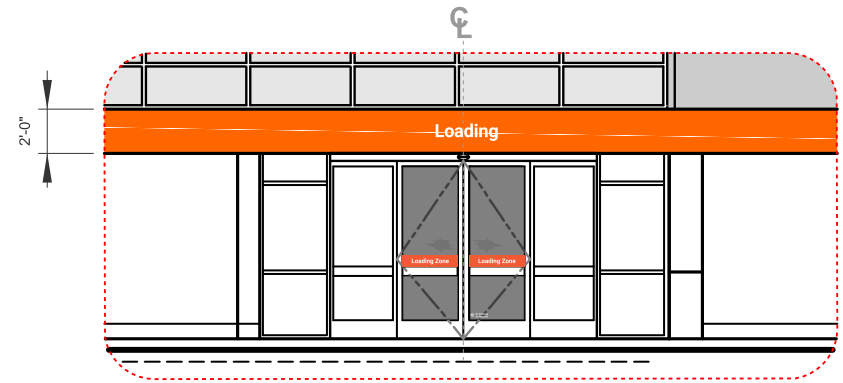
2 PLACEMENT DETAIL
SCALE: 3/16"=1'-0"

BUILDING 1 - EAST ELEVATION
SCALE: 1"=30'-0"



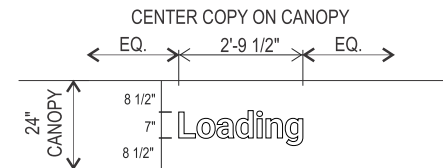
2 DIRECTIONAL SIGNAGE - RENTAL OFFICE
FCO LETTERS - CANOPY - NON-ILLUMINATED
SCALE: 3/8"=1'-0"
AREA: 2.7 SF

1/2" THICK WHITE ACRYLIC CUT OUT LETTERS
WITH FIRST SURFACE REFLECTIVE WHITE VINYL
INSTALL ON FACE OF CANOPY WITH STUDS



4 PLACEMENT DETAIL
SCALE: 1/16"=1'-0"

BUILDING 1 - NORTH ELEVATION
SCALE: 1"=30'-0"



4 FCO LETTERS - CANOPY - NON-ILLUMINATED
SCALE: 3/8"=1'-0"
AREA: 1.63 SF

1/2" THICK WHITE ACRYLIC CUT OUT
LETTERS WITH 1ST SURFACE
REFLECTIVE WHITE VINYL
INSTALL ON FACE OF CANOPY WITH STUDS

It is the intent and purpose of this color rendering to provide a basic color representation of your sign finish and color. However, digital media and printed colors will vary from actual paint finish and color. Existing painted surfaces will have a perceptible difference in shade and sheen from your sign finish. Providing a sample of the paint you wish to match or a Matthews paint color formula will minimize the differences.

16265 Star Road Nampa, ID 83687 toll free: 800.592.8058 tele: 208.345.4020 fax: 208.336.9886 www.imagenational.com

image national signs
...bringing your image to light!

PROJECT TITLE:

PUBLIC STORAGE

LOCATION:

SITE #20114
20565 VALLEY GREEN DR.,
CUPERTINO, CA 95014

REQUESTED BY:

J.G.

DRAWN BY:

DF / TRH / RR / RA / Dave J

COMPUTER FILE
INCLUDING DATE:

PBS-20114-CupertinoCA-R16-071922

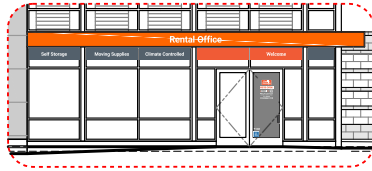
NAMPA PLANT -
UL #433195-001

U.S. & CAN. - All Signs conform to UL-90 (UL labeled accordingly) & must comply with UL-94 (UL listed) procedures. Canada - all signs must be CAS compliant. This sign is to be installed in accordance with the requirements of Article 606 of the National Electrical Code and/or applicable local codes. This includes proper grounding and bonding of the sign.

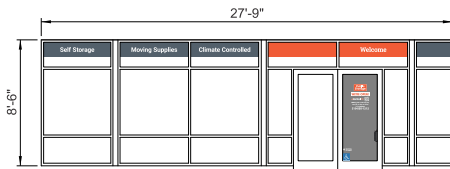
page #

7 of 7

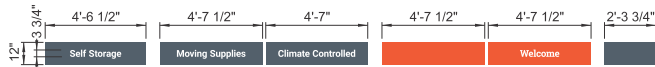
Window & Door Vinyl



8 BUILDING 1 - EAST ELEV. WINDOW VINYL
SCALE: 3/32"=1'-0"



PLACEMENT DETAIL
SCALE: 1/8"=1'-0"



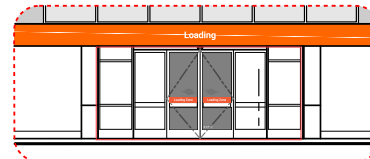
VINYL DETAIL
SCALE: 3/16"=1'-0"
AREA: 25.2 SF (WINDOW VINYL) + 3.5 SF (DOOR VINYL) = 28.7 SF TOTAL VINYL
TOTAL WINDOW AREA = 235.88 SF
TOTAL VINYL AREA = 12.1% OF TOTAL WINDOW AREA

NOTE TO INSTALLERS:
WINDOW VINYL DECALS WILL BE OVERSIZED 2" IN LENGTH
(1" ON EACH END) TRIM ENDS TO FIT ON SITE
ALWAYS CENTER COPY IN OPENING

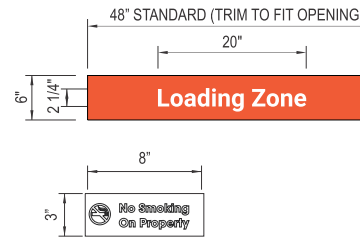
VINYL SCHEDULE	
COLOR	
3M VINYL 3730-3109 PS ORANGE	
3M VINYL 7725-41 GREY	
3M VINYL OPAQUE WHITE 180C-10	



9 BUILDING 1 - NORTH ELEV. - LOADING VINYL
SCALE: 3/32"=1'-0" 153.41 SF

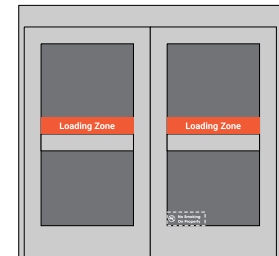


10 BUILDING 2 - NORTH ELEV. - LOADING VINYL
SCALE: 3/32"=1'-0" 153.41 SF



DIRECTIONAL VINYL
1ST SURFACE DOOR VINYL - LOADING
(4) SETS REQUIRED
SCALE: 3/4" = 1'-0"
AREA: 1.25 SF EACH PIECE (x4)
LOADING VINYL TOTAL AREA = 5.0 SF

NOTE TO INSTALLERS:
LOADING DOOR VINYL DECALS WILL BE OVERSIZED
IN LENGTH; TRIM ENDS TO FIT ON SITE
ALWAYS CENTER COPY IN OPENING



NOTE: TYPICAL LOADING ZONE VINYL PLACEMENT

**NOTE: ALL SIZES ARE ESTIMATED
UNTIL TECHNICALLY VERIFIED**

It is the intent and purpose of this color rendering to provide a basic color representation of your sign finish and color. However, digital media and printed colors will vary from actual paint finish and color. Existing painted surfaces will have a perceptible difference in shade and sheen from your sign finish. Providing a sample of the paint you wish to match or a Matthews paint color formula will minimize the differences.

16265 Star Road Nampa, ID 83687 toll free: 800.592.8058 tele: 208.345.4020 fax: 208.336.9886 www.imagenational.com



PROJECT TITLE:

PUBLIC STORAGE

LOCATION:

SITE #20114
20565 VALLEY GREEN DR.,
CUPERTINO, CA 95014

REQUESTED BY:

J.G.

DRAWN BY:

DF / TRH / RR / RA / Dave J

COMPUTER FILE INCLUDING DATE:

PBS-20114-CupertinoCA-R16-071922

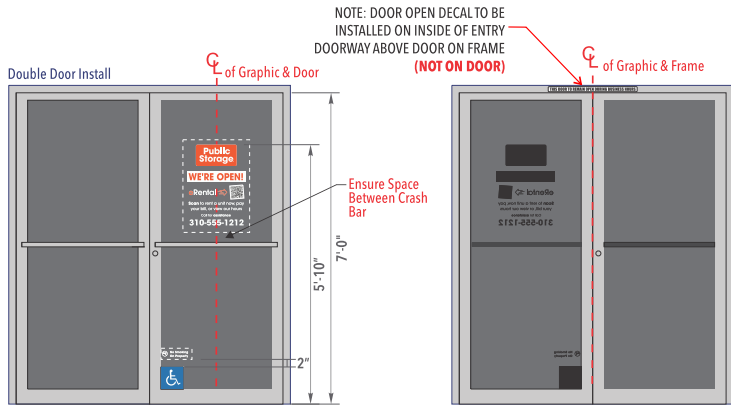
NAMPA PLANT -
UL #433195-001

U.S. & PR - All Signs conform to UL-94 (UL labeled accordingly) & must comply with UL-94 (UL) procedures. Canada - all signs must be CAN compliant. This sign is intended to be installed in accordance with the requirements of Article 606 of the National Electrical Code and/or applicable local codes. This includes proper grounding and bonding of the sign.

page #

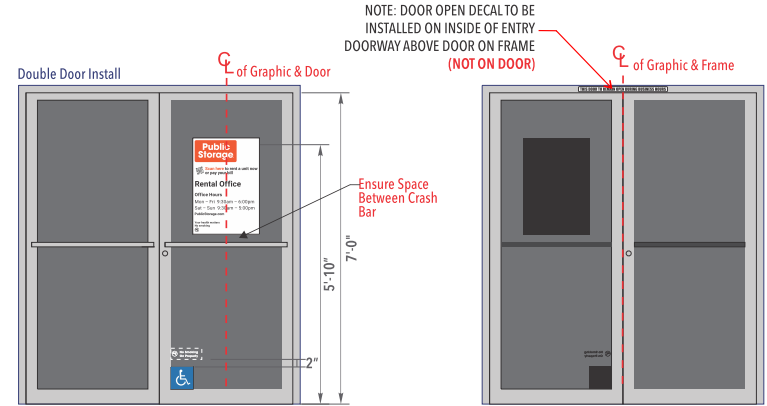
VINYL

Door Vinyl Detail

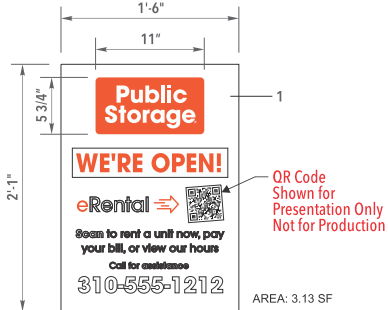


13 FIRST SURFACE OFFICE VINYL
SCALE: 3/8" = 1'-0"

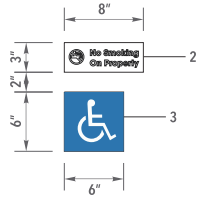
Temporary Door Vinyl Detail



14 FIRST SURFACE OFFICE VINYL
SCALE: 3/8" = 1'-0"

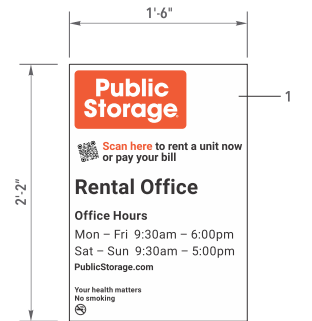


FIRST SURFACE OFFICE VINYL
SCALE: 1" = 1'-0"
TOTAL AREA: 3.5 SF

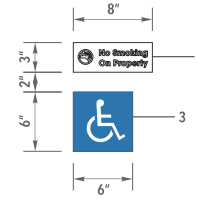


AREA: 0.42 SF

VINYL SCHEDULE	
COLOR	
1	DIGITALLY PRINTED GRAPHICS ON 3M IJ8150 OPTICAL CLEAR VINYL, 3M 8914 OVERLAMINATE REQUIRED ORANGE TO MATCH 3M 3730-3109 ENVISION ORANGE
2	DIGITALLY PRINTED GRAPHICS ON 3M IJ8150 OPTICAL CLEAR VINYL, 3M 8914 OVERLAMINATE REQUIRED
3	DIGITALLY PRINTED GRAPHICS TO MATCH ADA BLUE



FIRST SURFACE OFFICE VINYL
SCALE: 1" = 1'-0"

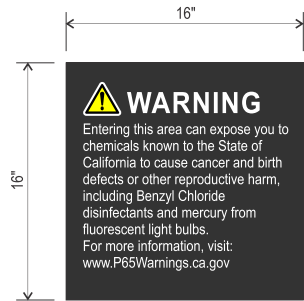


VINYL SCHEDULE	
COLOR	
1	DIGITALLY PRINTED GRAPHICS ON WHITE LOW TAC VINYL, 3M 8914 ORANGE TO MATCH 3M 3730-3109 ENVISION ORANGE
2	DIGITALLY PRINTED GRAPHICS ON 3M IJ8150 OPTICAL CLEAR VINYL, 3M 8914 OVERLAMINATE REQUIRED
3	DIGITALLY PRINTED GRAPHICS TO MATCH ADA BLUE

It is the intent and purpose of this color rendering to provide a basic color representation of your sign finish and color. However, digital media and printed colors will vary from actual paint finish and color. Existing painted surfaces will have a perceptible difference in shade and sheen from your sign finish. Providing a sample of the paint you wish to match or a Matthews paint color formula will minimize the differences.

12625 Star Road Nampa, ID 83687 toll free: 800.592.8058 tele: 208.345.4020 fax: 208.336.9886 www.imagenational.com

	PROJECT TITLE:	PUBLIC STORAGE	REQUESTED BY:	J.G.		page # VINYL
	LOCATION:	SITE #20114 20565 VALLEY GREEN DR., CUPERTINO, CA 95014	DRAWN BY:	DF / TRH / RR / RA / Dave J		
	COMPUTER FILE INCLUDING DATE:	PBS-20114-CupertinoCA-R16-071922	U.S. & PR - All signs conform to UL-910 (UL labeled accordingly) & must comply with UL-914 (UL labeled accordingly). Canada - all signs must be CAS compliant. This sign is intended to be installed in accordance with the requirements of Article 606 of the National Electrical Code and/or applicable local codes. This includes proper grounding and bonding of the sign.			
	© 2016 image national signs. This design is an original work of authorship by Image National, Inc. (image) which owns the copyright protection by the copyright law of the United States (Title 17, U.S. Code). All rights are reserved by image and, until the use of this design is authorized by image in writing, image owns the exclusive rights to: a) reproduce this design in copies, in graphic form or as a sign; b) prepare derivative works based upon the design; c) distribute copies of the design by sale or other transfer of ownership; and d) display the design publicly.					



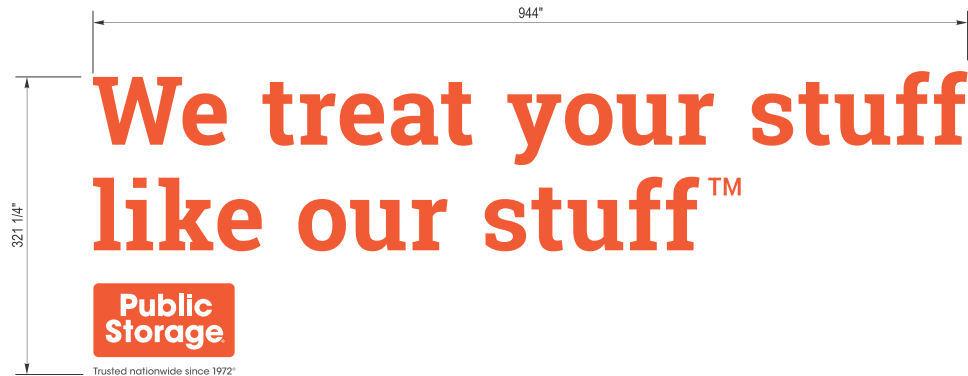
11 FIRST SURFACE VINYL DECAL
SCALE: 1 1/2" = 1'-0"

DIGITAL PRINTED GRAPHICS ON CLEAR VINYL
WHITE COPY, WHITE, BLACK & YELLOW WARNING SYMBOL
BACKGROUND IS CLEAR

SIGN LOCATION - WINDOW OPTION

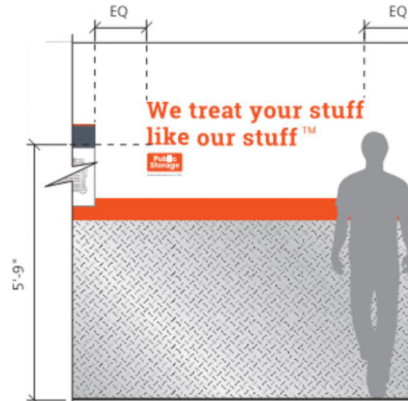


Vinyl lettering version of sign when storefront available. Font to be WHITE with transparent background



12 SURFACE APPLIED WALL VINYL
SCALE: 1 1/2" = 1'-0" (2) REQUIRED

- 3M VINYL 3730-3109 PS ORANGE COPY LAMINATED TO 3M 7725-10 WHITE
- SMALL COPY - "TRUSTED NATIONWIDE SINCE 1972" - DIGITALLY PRINTED ON CLEAR VINYL



ELEVATOR LOBBY BRANDING - VINYL
SCALE: 3/8" = 1'-0"

NOTE:
THIS IS AN INTERIOR
SIGN AND NOT INCLUDED
IN MASTER SIGN PROGRAM

**NOTE: ALL SIZES ARE ESTIMATED
UNTIL TECHNICALLY VERIFIED**

It is the intent and purpose of this color rendering to provide a basic color representation of your sign finish and color. However, digital media and printed colors will vary from actual paint finish and color. Existing painted surfaces will have a perceptible difference in shade and sheen from your sign finish. Providing a sample of the paint you wish to match or a Matthews paint color formula will minimize the differences.

16265 Star Road Nampa, ID 83687 toll free: 800.592.8058 tele: 208.345.4020 fax: 208.336.9886 www.imagenational.com

	PROJECT TITLE:	PUBLIC STORAGE	REQUESTED BY:	J.G.		NAMPA PLANT -	U.S. & CAN. - All signs conform to UL-90 (UL labeled accordingly) & must comply with UL-914 (UL listed) procedures. Canada - all signs must be CAS compliant. This sign is intended to be installed in accordance with the requirements of Article 606 of the National Electrical Code and/or applicable local codes. This includes proper grounding and bonding of the sign.
	LOCATION:	SITE #20114 20565 VALLEY GREEN DR., CUPERTINO, CA 95014	DRAWN BY:	DF / TRH / RR / RA / Dave J		UL #433195-001	
			COMPUTER FILE INCLUDING DATE:	PBS-20114-CupertinoCA-R16-071922			