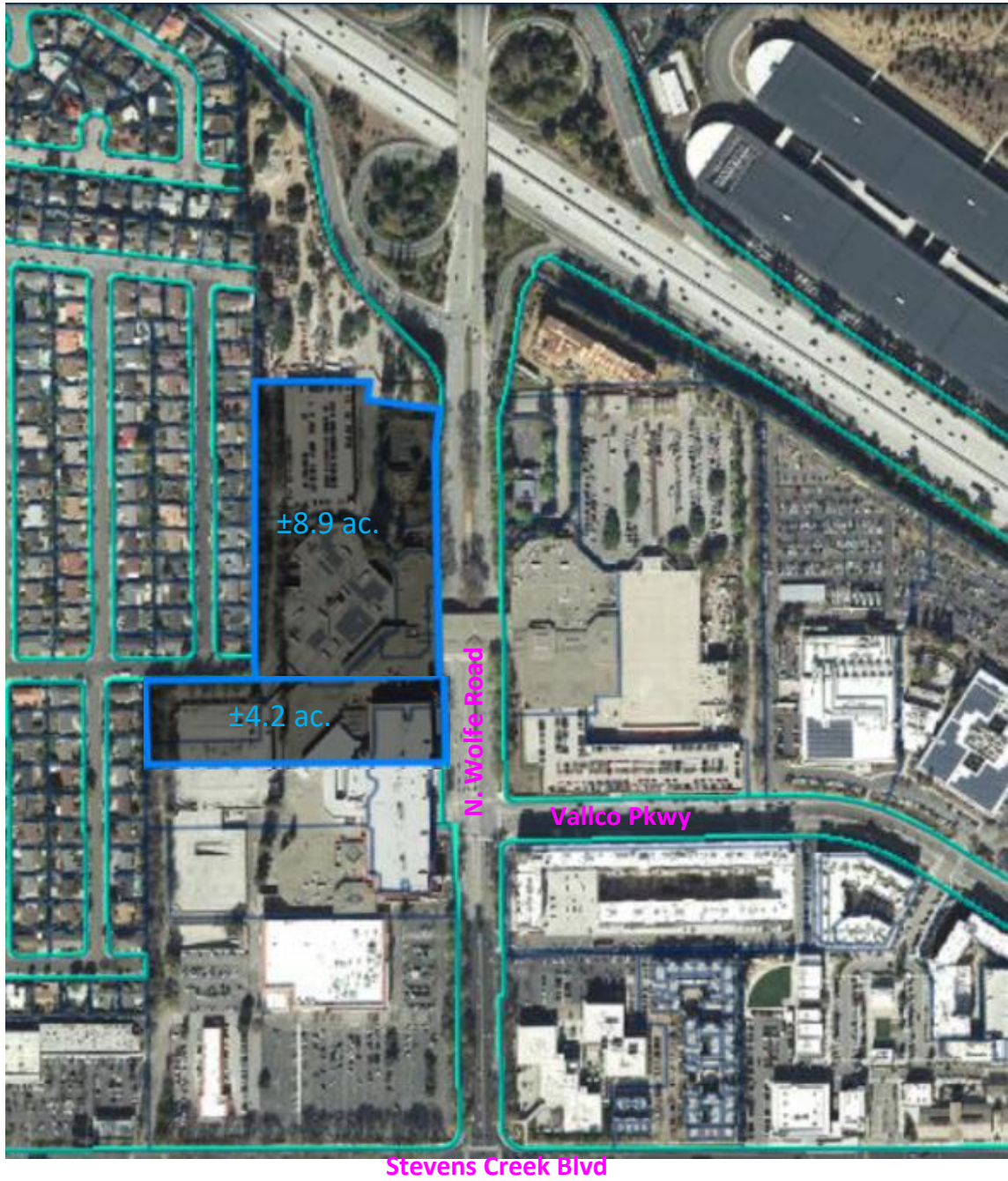
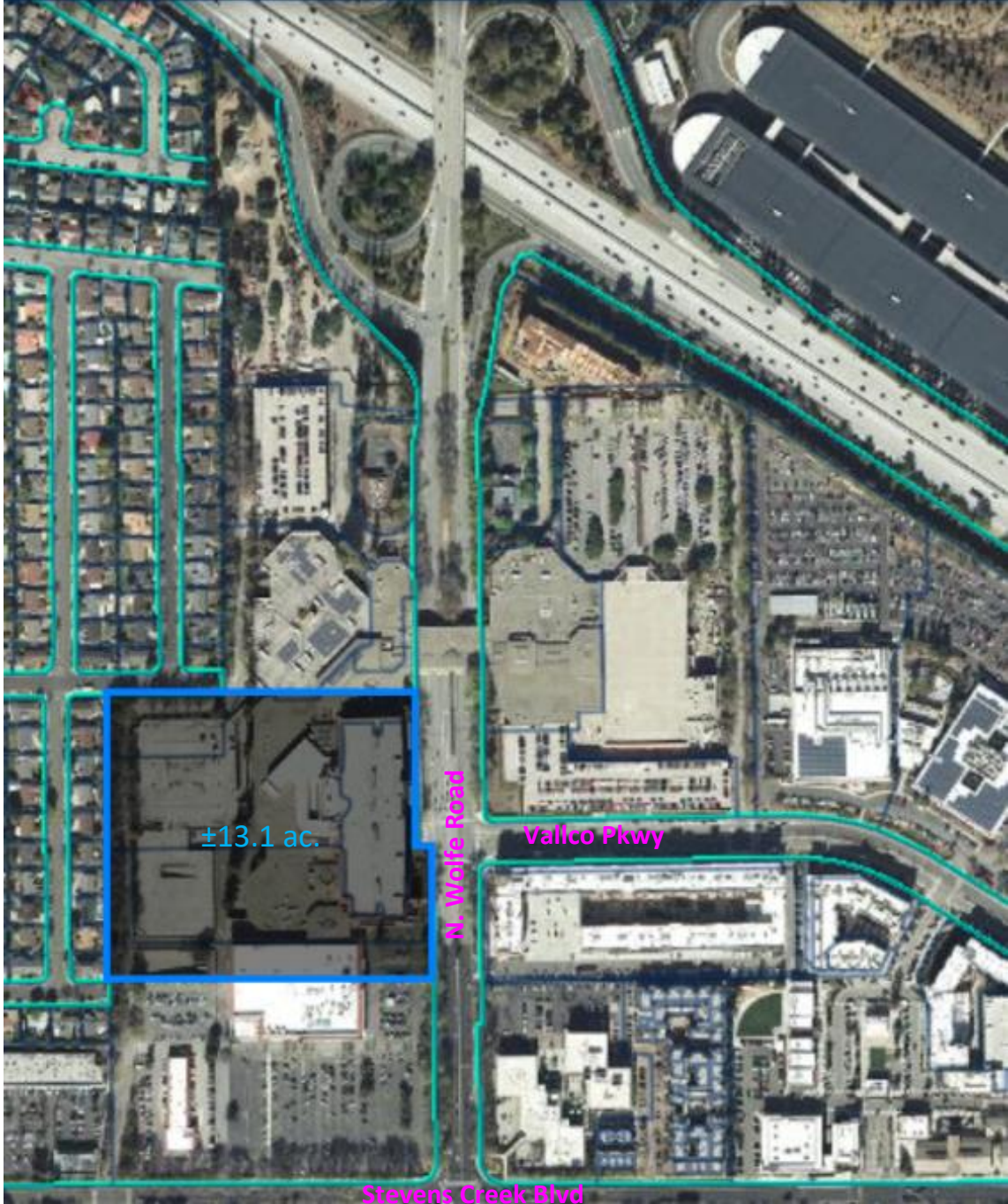


Potential Location A: West of Wolfe Road and North of Vallco Parkway



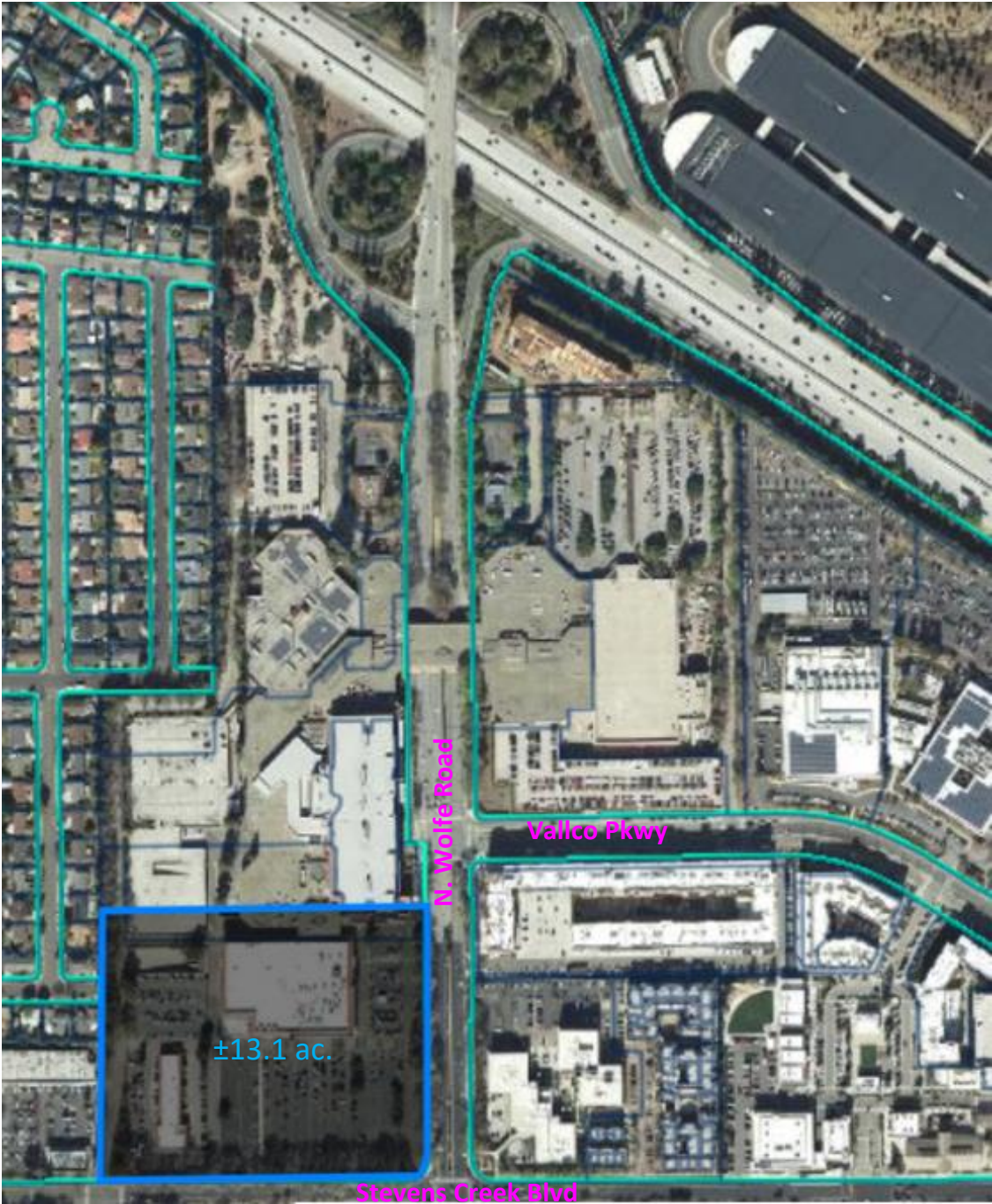
Potential Location B: West of Wolfe Road at the Terminus of Vallico Parkway



N



Potential Location C: West of Wolfe Road between Vallco Parkway and Stevens Creek Boulevard



Potential Location D: East of Wolfe Road and North of Vallco Parkway

