



DRAFT MINUTES
MINUTES OF THE SPECIAL MEETING OF THE
BICYCLE PEDESTRIAN COMMISSION
February 20, 2025

Draft Minutes

The meeting was called to order at 7:02 p.m.

ROLL CALL:

Present: Gerhard Eschelbeck, Ilango Ganga, Hervé Marcy (C), Munisekaran Madhhipatla, Joel Wolf (VC)

Absent: None

Staff: David Stillman, Staff Liaison

Others Present: Chelsea Biklen, Safe Routes to School Coordinator

APPROVAL OF MINUTES

1. October 16, 2024 Bicycle Pedestrian Commission Minute

MOTION: Vice Chair Wolf moved, seconded by Commissioner Ganga to approve the minutes as presented.

MOTION PASSED: 3-0, Madhhipatla & Marcy Abstain

POSTPONEMENTS

No postponements

ORAL COMMUNICATIONS

John Stauffer, public speaker, spoke regarding pedestrian safety.

WRITTEN COMMUNICATIONS

None

OLD BUSINESS

NEW BUSINESS

2. Election of the Bicycle Pedestrian Commission Chair and Vice Chair for 2025

NOMINATION: Commissioner Eschelbeck, seconded by Commissioner Madhhipatla to nominate Commissioner Ganga as Chair of the Bicycle Pedestrian Commission for 2025.

NOMINATION OF COMMISSIONER GANGA AS CHAIR FOR THE BICYCLE PEDESTRIAN COMMISSION FOR 2025 PASSED: 3-0, Marcy & Wolf Abstain

NOMINATION: Commissioner Madhhipatla, seconded by Chair Ganga to nominate Commissioner Eschelbeck as Vice Chair of the Bicycle Pedestrian Commission for 2025.

NOMINATION OF COMMISSIONER ESCHELBECK AS VICE CHAIR FOR THE BICYCLE PEDESTRIAN COMMISSION FOR 2025 PASSED: 3-0, Marcy & Wolf Abstain

3. Bike Event Coordination (Biklen)

NO ACTION TAKEN

4. Bicycle Facilities Improvements (Stillman)

NO ACTION TAKEN

STAFF AND COMMISSION REPORTS

5. Staff Update and Commissioner Activity Report (All)

NO ACTION TAKEN

FUTUTE AGENDA SETTING

Work Plan

- Bicycle Facilities – In Progress
- Active Transportation Plan (FY 24-25)
- CIP Recommendations for FY 25/26 (Ganga)

Grants

- Know/Understand Fed Grant Funding with Caltrans on updated bike-ped planning
- Understand/Educate on what funding standards are (Fed/State)

Studies / Plans

- Kennewick Drive/Homestead Road Study
 - Stop Gap Measures/Temporary Solutions
- Study on McClellan Ave bike lanes in front of Monte Vista High School (October maybe)
- Staff update - Stevens Creek Corridor Vision Study
- Examine Pedestrian Walkways for Safety
- Install Bollards at existing buffered bike lanes (Public Request)
- Path between Lincoln Elem and Monta Vista HS

- Regnart Creek Trail Crossing at Blaney Avenue
- Speed Limits Studies (Spring/Summer 2025)
- Bollinger Road Corridor

Projects

- Staff update - Stevens Creek Boulevard, Phases 2B
- Staff update - Safe Routes to School (SR2S)
- Carmen Road Bridge
- I-280 Wolfe Interchange
- Vision Zero Next Steps (Ganga)
- Staff update on CIP Project updates (6 mo.)

Education

- Adult Bicycle Education
- Impact of Semi-Rural Designation on Bike and Ped Projects/Priorities
- Lead Pedestrian Walk Interval (LPI) – Start pedestrian green before vehicles
- Bicycle and pedestrian safety

Miscellaneous

- Bicycle Licensing (Theft Prevention)
- Review Progress toward BPC Objectives & Grant Applications (6 mo.)
- Status – VTA BPAC Adult Bicycle Education (Lindskog)
- Inventory of Traffic Lights (triggering traffic light from a detector) – Staff update
- Pedestrian safety on Torre Avenue (Muni)
- Before and after data on separated bike lanes and major intersections for improvement – Use of data for future decisions
 - Combine this data with the data on safety (Muni/Marcy)

Is there a sensitivity setting (Fall)

ADJOURNMENT

Meeting adjourned at 8:40 p.m.

SUBMITTED BY:

David Stillman, Staff Liaison

Note: Any attachments can be found on the Cupertino Website

<https://www.cupertino.org/our-city/agendas-minutes>

Bay Area Bike to Wherever Days

Commissioner Coordination



**CITY OF
CUPERTINO**

Chelsea Biklen
SafeRoutes@Cupertino.org
(408)777-7609

WALK
CUP
E O
B I C

Bay Area BTWD

Bike to Work!

Advocating Safe



WALK: Bike to Work / Wherever Days

Bike to Work / Wherever Days

Advocating Safe



Bike To Wherever Days

2025 ALAMEDA • CONTRA COSTA • MARIIN • NAPA • SAN FRANCISCO
SAN MATEO • SANTA CLARA • SOLANO • SONOMA • BAY AREA

Energizer Station

Help Energize Local Cyclists' Trips

2025 Dates:

Thursday, May 15

Friday, May 16

Saturday, May 17



Energizer Station Host Responsibilities

- Sign Up to Host Energizer Station
- Read Energizer Station Host Guide
- Encourage as many folx as possible to pledge to ride
- Pick Up Tote Bags
- Attend one-hour Zoom orientation- **Thurs May 8 @ 1 pm**
- Recruit volunteers to help staff booth
- Coordinate table/chairs/canopy with City
- Provide refreshments

Energizer Station Host Responsibilities

Sign up to Host Energizer Station

Sign Up by **April 30**:

<https://bikesiliconvalley.org/energize>

Decisions needed to sign up:

- Date?
- Location?
- Time?

Energizer Station Host Responsibilities

Read Energizer Station Host Guide

[Guide](#)



Energizer Station Host Responsibilities

**Encourage as many people as possible to
pledge to ride!**

Santa Clara County Pledge to Ride Link:

<https://www.eventbrite.com/e/pledge-to-ride-bike-to-wherever-days-2025-tickets-1119156359799>

Energizer Station Host Responsibilities

Pick Up Tote Bags

Monday, May 5

12 noon to 3 pm

Sports Basement

1177 Kern Ave

Sunnyvale, CA 94085



Energizer Station Host Responsibilities

Attend one-hour Zoom orientation

- Training Date:
Monday May 8, 1 pm
- Register via links in Energizer Station Host Guide (link in a previous slide)
- (if unable to attend the live training, slides are available)

Energizer Station Host Responsibilities

Recruit volunteers to help staff booth

- Bring friends and family!
- Walk Bike Cupertino has historically been a wonderful partner to the BPC

Energizer Station Host Responsibilities

Provide refreshments

- \$100 reimbursement from City (fruit, energy bars, coffee, electrolytes, etc.)
- Submit receipts to David Stillman



Coordination Questions

- Station Details
 - Date?
 - Location?
 - Time?
- Who will coordinate this year's station?
 - Fill out form by **April 30**
 - Pick up tote bags **May 5**
 - Attend training **May 8**
- Who else can staff the table?

Coordination Questions

- **Station Details & Staff Recommendations**
 - Date? **May 15?**
 - Location? **McClellan/Stelling or DB Bridge?**
 - Time? **7:00 a.m. to 10:00 a.m.?**
- Who will coordinate this year's station?
 - Fill out form by **April 30**
 - Pick up tote bags **May 5**
 - Attend training **May 8**
- Who else can staff the table?

Thank You!



Bike To Wherever Days
2025 ALAMEDA • CONTRA COSTA • MARIN • NAPA • SAN FRANCISCO
SAN MATEO • SANTA CLARA • SOLANO • SONOMA • BAY AREA

Bicycle Facilities Improvements

Bicycle Pedestrian Commission

February 20, 2025



Background / Timeline

Bicycle Facilities Work Plan Item approved FY 22-23

- Purpose to increase inventory of bike facilities and amenities throughout City
- \$50,000 Council allocation
- BPC Subcommittee formed to assist City staff in implementing project

Rotary Club of Cupertino interested in promoting bicycle usage

- Investigating locations for bike racks in front of private businesses, as well as on City property
- Coordinating efforts with BPC Subcommittee
- Private business locations in progress

Background / Timeline

MOU between City and Rotary Club, executed February 2024

- Addresses locations on City property
- Rotary to purchase and install bike racks at locations mutually acceptable to City
- City to reimburse \$250/bicycle space, up to \$50,000

Rotary and BPC Subcommittee completed initial list of 6 recommended locations and rack designs

Rotary Proposal

Bike Racks in Partnership with the City

We are planning to install 6 racks in six locations.

1. McClellan Ranch Blacksmith Shop
2. Memorial Park Amphitheater
3. Library Field near the Library
4. Wilson Park Playgrounds
5. Cafe Lattea Street Median
6. Wow Tea Street Median

1. McClellan Ranch

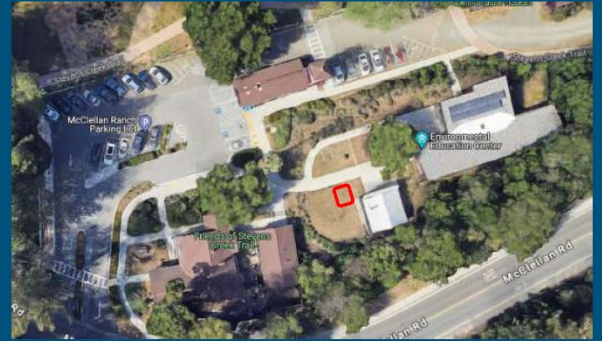
1. McClellan Ranch Blacksmith Shop

The city has agreed to pour a concrete pad in the open area next to the Blacksmith Shop.

Approximate max size of the bike rack including bikes parked there: 7'x7'

Size: 4 bikes

Rack design: Wagon wheel



1. McClellan Ranch

City concerns with proposed location:

- Area to be used for nature activities and will have log benches
- Part of area dedicated to former staff member
- Location needed for water access to ensure safety during use of forge

City proposed location:



2. Memorial Park

2. Memorial Park

Concrete area near the Amphitheater.

Approximate max size of the bike rack including bikes parked there: 6'X10'.

Size: 8 bikes

Rack design: Shark



2. Memorial Park

City concerns with proposed location:

- Area widely used by festivals, Veteran's Day band, other events

City proposed location:

- Near parking lot/softball field, or next to pathway to gazebo:



3. Library Field

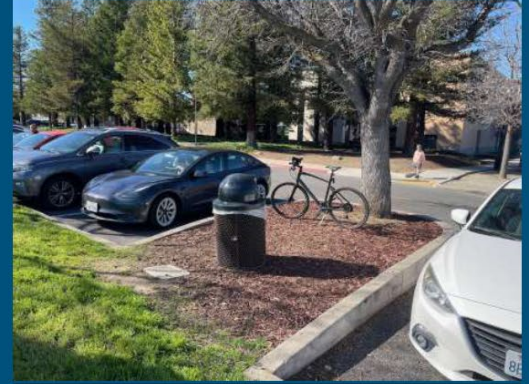
3. Library Field

Add concrete pad in the parking lot separator in the north east part of Library Field (near cricket field).

Approximate max size of the bike rack including bikes parked there:
6'x6'

Size: 2 bikes

Rack design: Chat bubbles



4. Wilson Park

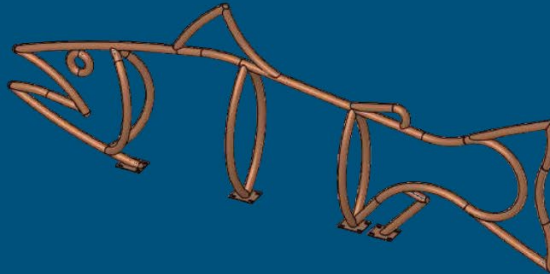
4. Wilson Park

Mid-park between the toddler playground and the bigger kids playground

Approximate max size of the bike rack including bikes parked there: 8'X12'

Size: 8 bikes

Rack design: Salmon



5. Café Lattea and Wow Tea

5. Cafe Lattea and 6. Wow Tea

Put in concrete pads in the grass in front of the restaurants between the curb and the sidewalk.

Approximate max size of each bike rack including bikes parked there:
6'x10'

Size: 2 bikes each

Rack designs:
Coffee mug
Ice cream cone



Cost Summary

Cost Summary

Location	Rack design	Bike Spaces	City Contribution	Cost w/ Rotary logo
McClellan Ranch Blacksmith's Shop	Wagon wheel	4	\$1,000	\$1,474
Wilson Park Playgrounds Picnic Area	Salmon	8	\$2,000	\$6,947
Library Field	Chat bubbles	2	\$500	\$2,130
Memorial Park Amphitheater	Shark	8	\$2,000	\$7,650
Caffe Lattea	Ice cream cone	2	\$500	\$1,364
Wow Tea	Coffee mug	2	\$500	\$1,920
	Cost for selected 6 locations	36	\$6,500	\$21,485
				Sales tax
				\$1,960.51
				Shipping
				\$1,124.00
				Total Cost
				\$24,570
				Reimbursement by City
				\$6,500
				Net cost to the Rotary
				\$18,070

Discussion and Next Steps

- Staff seeking BPC input on locations and designs
- Rotary and BPC Subcommittee to revisit McClellan Ranch and Memorial Park location, submit revised locations to City for review
- Following final approval of all designs, staff to proceed with installation of concrete pads

Bicycle Facilities Improvements

End Slide

February 20, 2025

