

ACC 05-18-2026

#4

CalColor Academy

Presentations

CalColor Foundation Civic Art Leadership Program



INITIATIVE

LEADERSHIP

IMPACT



“

Empowering **Young Creators**
Through **Real-World Art Projects**

CalColor Academy



CalColor Academy is a WASC- and College Board-certified institution and one of the most prominent youth arts education organizations in the San Francisco Bay Area. We operate six campuses and serve approximately over 5,000 students aged 4–18 annually through a structured and comprehensive art education program, supported by a team of over 60 professional art teachers.



Our Achievements

Our Teen Program enrolls over 800 advanced teenage students, with more than 150 actively preparing portfolio-based applications to leading art and design colleges. In 2025, CalColor students received 365 Scholastic Art & Writing Awards, including over 80 Gold Keys, demonstrating a strong track record of excellence at the national level.



Scholastic
Art & Writing
Awards

Alliance for
Young Artists
& Writers



CalColor Foundation

NON-PROFIT

YOUTH

COMMUNITY

CalColor Foundation is a nonprofit initiative hosted and managed by CalColor Academy, dedicated to extending art education beyond the classroom into meaningful community engagement. Rooted in CalColor's mission to inspire individual artistic voice and creative growth, CalColor Foundation empowers students to apply their artistic skills in real-world contexts—fostering leadership, collaboration, and a strong sense of civic responsibility. CalColor Foundation is creating impactful opportunities for youth to engage with and contribute to their communities through art.



About Our Civic Art Leadership Program

We are a **student-led** civic art initiative, guided by CalColor's **professional** instructors and fully supported by CalColor Foundation, where students design and execute **city-approved** public artworks in collaboration with the community. This program transforms traditional art education into a **real-world** learning experience—empowering students to lead creative projects, **work collaboratively**, and contribute to public spaces in a **structured, professionally supervised environment**.

By integrating artistic practice with **leadership** and civic responsibility, the program not only enhances the city's cultural landscape but also cultivates ownership, **project management**, and civic engagement, enabling students to make a **meaningful impact** while developing experiences that support their broader academic and personal growth.

Student-Led

Instructor-Guided

City-Approved



Target Project Examples



Design & Materials



Potential Examples

Utility box 1 Location: at the corner of De Anza Blvd and Pacifica Dr

Utility box 2 Location: at the corner of De Anza Blvd and Bollinger Rd

Design Process

- **Theme:** Youthful Perspectives on Nature & Technology
- **Communication:** Will provide constant updates to corresponding individuals
- **Creative Process:** Student-led but teacher-guided

Materials

- Cost will be all covered by CalColor Foundation
- UV-Resistant Lightfast Acrylic Paint
- Anti-Graffiti Coating
- Safety Equipment

Possible Date Window

- June 22-26

Program Structure

Execution Workflow

Phase 1: Concept & Research

Project Initiation & Alignment

- Identify potential public art opportunities and site conditions
- Conduct preliminary research on location, safety, and community context
- Initiate communication with the City and confirm project scope and requirements

Phase 2: Design & Approval

Concept Development & City Review

- Develop student concept proposals based on project theme and site conditions
- Internal review by CalColor instructors to ensure quality and feasibility
- Submit selected designs to the City for feedback, revision, and final approval

Phase 3: Planning & Execution

Preparation, Coordination & Implementation

- Form student teams and assign roles
- Plan timeline, materials, and budget; conduct safety training
- Prepare site and execute painting under professional supervision

Phase 4: Completion & Presentation

Finalization & Community Engagement

- Apply protective coatings and complete final quality checks
- Clean and restore the site to ensure public safety and usability
- Document the process and present the completed project to the community

Team Structure & Roles



Program Supervision Team

Led by CalColor Teen Program instructors with professional art training and project experience

- Provide creative direction, technical guidance, and project oversight
- Ensure all activities meet quality, safety, and city requirements
- Supported by administrative staff for coordination, scheduling, and material logistics

Student Leadership Team

Project Lead

- Leads the project and serves as City liaison
- Oversees planning, coordination, and delivery

Design Lead

- Leads concept development and visual direction
- Ensures quality, consistency, and design adherence

Production Lead

- Manages on-site execution and workflow
- Coordinates materials, safety, and documentation



Student Project Team

- Selected from CalColor students based on technical skill and commitment
- Participate in design execution and on-site production
- Work under structured guidance to ensure quality and consistency
- Receive volunteer service credit and develop hands-on experience



Safety & Professional Standards



Professional Supervision & Control

- All activities are led and directly supervised by experienced CalColor instructors
- Maintained low student-to-instructor ratio (1:5) to ensure close monitoring
- All execution steps are instructor-guided and quality-controlled



Safety Measures & Site Management

- Use of high-visibility vests, traffic cones, and protective equipment
- Clearly defined work zones with no interference to pedestrian or traffic flow
- Work scheduled during low-traffic hours to minimize risk (~10:00AM - 2:00PM PST)



Liability & Compliance

- All participants complete parental consent and liability waiver forms
- Activities conducted under established safety and operational guidelines
- CalColor will ensure compliance with city requirements and safety standards

A Shared Commitment to Youth Development



City Partnership

Provides real-world public art opportunities

Enhances public spaces and strengthens community identity

Creates a platform for meaningful youth engagement

CalColor Foundation

Provide professional artistic guidance and project supervision

Fully sponsored resources, and operational support

Offer structured programs with verified volunteer service credit

Student Growth

Gain hands-on experience in real-world creative projects

Develop leadership, collaboration, and civic awareness

Contribute meaningfully to their community through art

**We don't just teach art —
we empower young artists to
shape their community.**

Initiative · Leadership · Impact

ACC 05-18-2026

Public art
installation for Bianchi Way
Townhomes

Presentations

Arts and Culture Commission

BIANCHI TOWNHOMES PUBLIC ART

Revisited: May 18, 2026



**CITY OF
CUPERTINO**

Subject

Architectural and Site Approval (ASA-2026-005) to consider a public art installation for the Bianchi Townhomes Development at 10070, 10072, 10074, 10076, 10078, 10080 & 10082 Bianchi Way; APN(s): 359-07-021.

Arts and Culture Commission

At the March 23, 2026 meeting, the Arts and Culture Commission asked the applicant team to return at a later date to address potential safety concerns of the art piece that include,

- To address potential safety concerns with the sharp tips near the limb, by changing the tilt, or rounding the edges, and,
- Reduce the accessibility of the pedestal, and,
- Bring to the Commission more evidence on the fabrication and construction made by the selected builder, and more examples of sculptures made by the selected builder.

Bianchi Townhomes

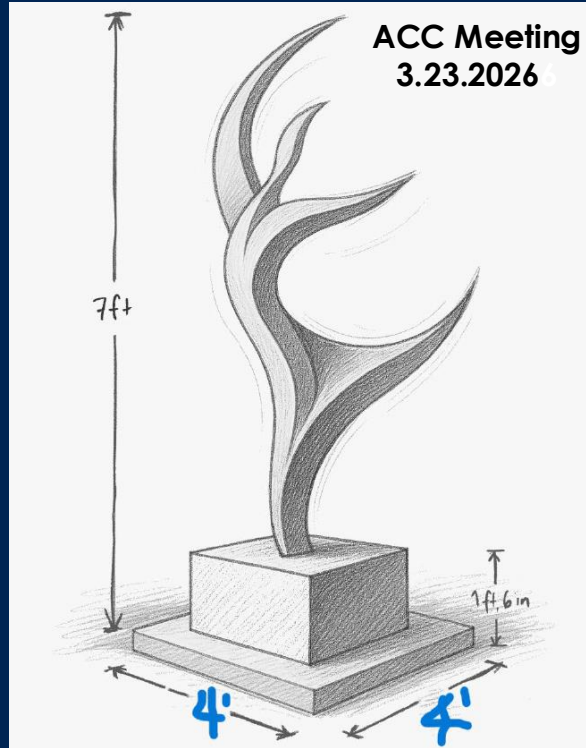


Public Art Piece: Comparison Images

Arabesque

Libre:

Created by
Amelia
Tang



What criteria is considered when reviewing the art pieces?

- Artwork integral part of landscaping/architecture of the buildings;
- Easily visible from public street and be located in an area specifically designated on site plan;
- Permanent materials requiring a low level of maintenance;
- Preference to artists living or working in the San Francisco Bay Area
 - Avoid artists whose art already displayed as public art within the City of Cupertino boundaries
- Expressions of obvious bad taste or profanity shall not be approved;
- Artwork shall be identified by an appropriate plaque or monument

Recommendation and Next Steps

- Receive a presentation on a public art installation for the Bianchi Townhomes Development and approve public art application, subject to conditions of the draft resolution.
- The decision of the Arts and Culture Commission is final, unless appealed within 14 calendar days from the date of the hearing.

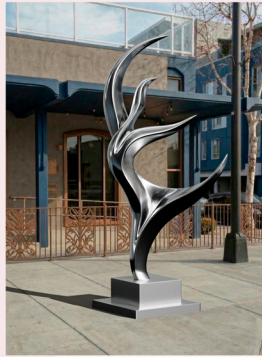
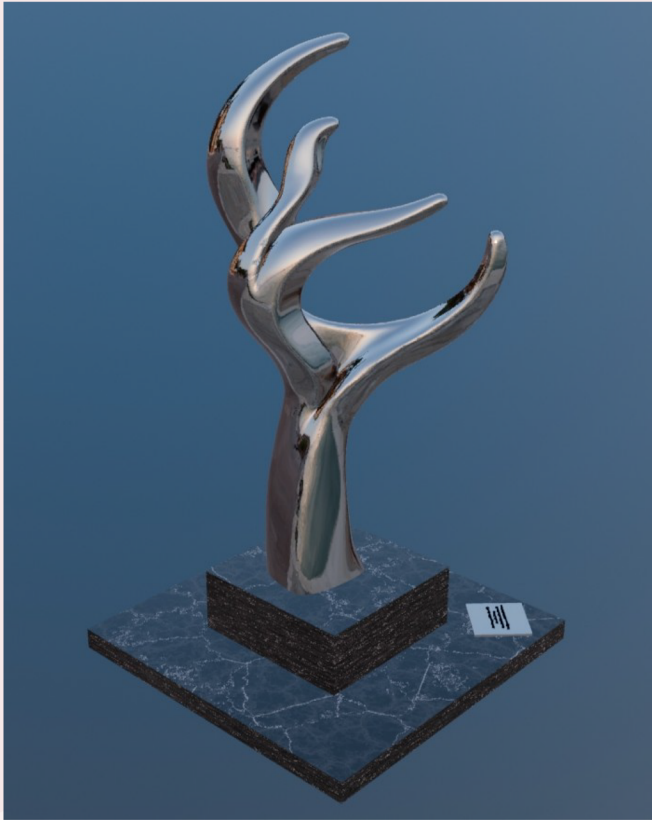
Arabesque Libre

Amelia Tang

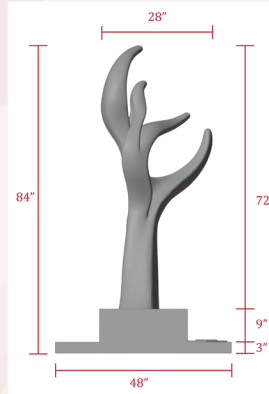
Arabesque Libre is an abstract exploration of movement and form, where elongated lines and shifting shapes evoke gesture, flow, and the quiet tension of motion held in suspension. The sculpture reflects an ongoing interest in how the body moves through space and how those movements leave lasting impressions both physical and emotional.

Drawing from years of personal experience with travel and dance, the work translates fleeting moments of motion into a fixed, sculptural language. These influences are not depicted literally, but distilled into rhythm, balance, and directional energy. The piece carries traces of practiced movement and observed gesture, shaped by environments and experiences that have informed an awareness of spatial interaction.

Like dance, Arabesque Libre exists between control and release. Its composition emphasizes both structure and fluidity, allowing opposing forces tension and ease, weight and lift to coexist. In doing so, the sculpture invites viewers to consider the subtle energy that underlies even the most minimal movement, capturing a sense of grace that is both dynamic and restrained.



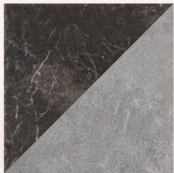
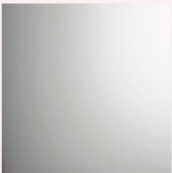
VERSION 1



DIMENSIONS

Material

Fabricated in stainless steel, Arabesque Libre stands nearly 7 feet tall, anchored by a 4 x 4 feet base. The material's reflective surface enhances the sculpture's sense of movement, subtly shifting with light and its surroundings while reinforcing its structural clarity and presence. The statue base is constructed from reinforced concrete to provide long-term structural stability and durability in a public outdoor setting. It is finished with a 4 x 4 feet marble tile that adds a refined appearance while helping protect the underlying concrete from weathering and wear.

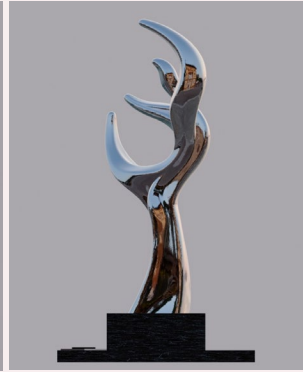
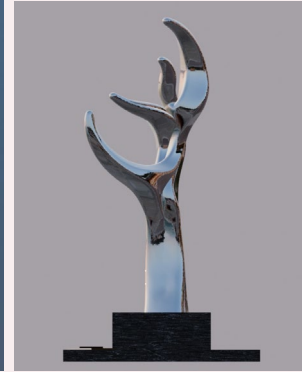
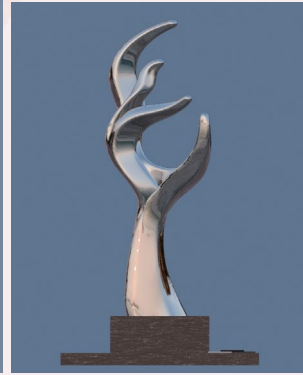
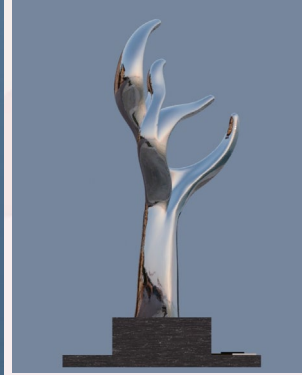
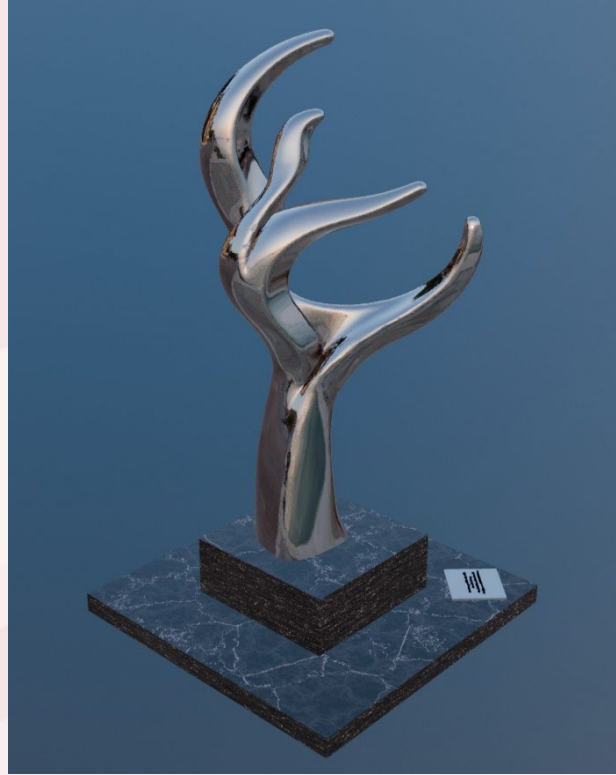


Arabesque Libre

BEFORE



AFTER



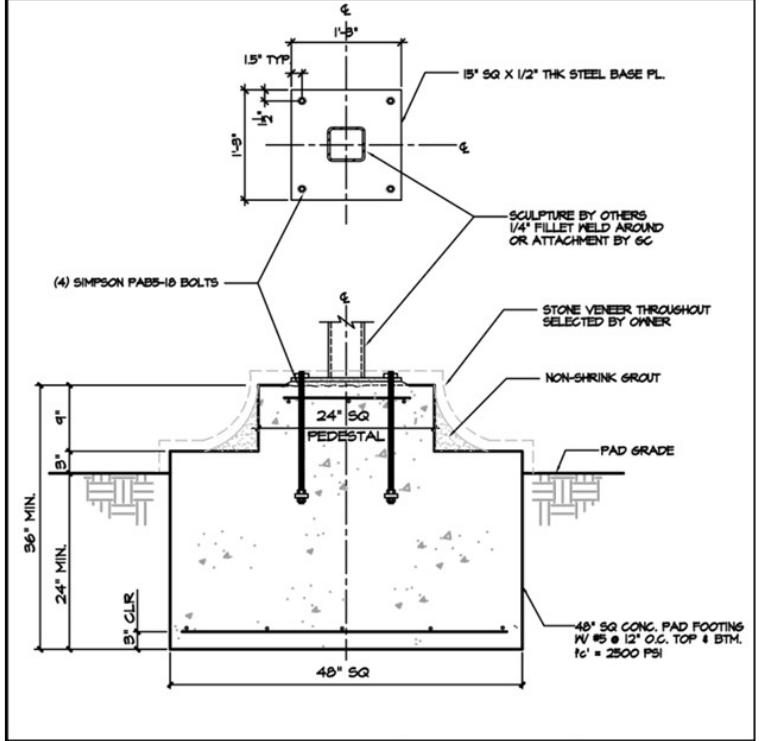
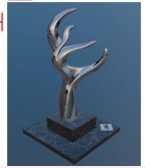
Measurements



nbe consultants, inc
 510-578-8893
 nbeconsultants@gmail.com

Structural Calculations
 for
 SCULPTURE
 BIANCHI WAYTOWNHOUSE
 CUPERTINO, CALIFORNIA



Project No. 26-289
 3/30/2026 - City Submittal
 5/17/2026 - REVISION



SHEET: S-1	DATE: 5/17/2026	PREPARED BY:  nbe consultants, inc
PROJECT: No. 26-289 BIANCHI WAY SCULPTURE CUPERTINO, CA 95014		3621 Kay Court, Fremont, CA 94538 40 8.8.68. 8893

Weight, and Calculations provided by fabricator, Finest Sculpture, and NBE Consultants

Installer: Pentiger Construction

Pentiger Construction is a construction company located in the South Bay. His team has worked on constructing and renovating over 100 properties in the last 6 years, including the installation of two public art sculptures.



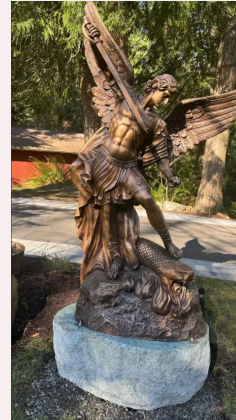
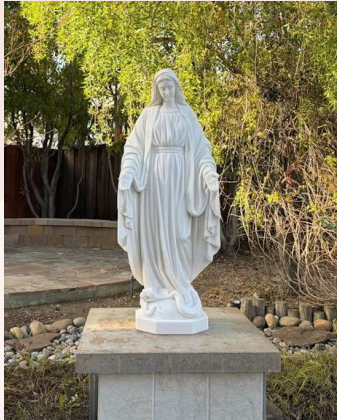
Located in Dublin Ulferts Center
4288 Dublin Blvd, Dublin, CA 94568



Located in Fremont Times Square
46292 Warm Springs Blvd, Fremont, CA 94539

Fabricator: Finest Sculpture

Finest Sculpture is a Texas-based sculpture fabrication company specializing in large-scale custom sculptures and architectural artworks for public, commercial, hospitality, and residential projects. Their portfolio includes monumental outdoor sculptures, site-specific installations, and fabricated artworks designed for long-term public and exterior environments.



ACC 05-18-2026

#3

Public Art
Installation for Valencia
Townhomes

Presentations

Arts and Culture Commission

VALENCIA TOWNHOMES PUBLIC ART

May 18, 2026



**CITY OF
CUPERTINO**

Subject

Architectural and Site Approval (ASA-2026-007) to consider a public art installation for the Valencia Townhomes Development at 20830 Stevens Creek Boulevard (APN: 359-08-031).

Required Artwork

- Required for development of ten thousand sq. ft. or larger
- Valencia Townhomes development approved July 1, 2025







What is considered artwork?

- **Sculpture:** in-the-ground, bas-relief, mobile, fountain, kinetic, electronic, or other, in any material or combination of materials;
- **Painting:** all media, including portable and permanently affixed works, such as murals;
- **Graphic arts:** printmaking, drawing, calligraphy and photography, but only when on a large public scale;
- **Mosaics;**
- **Functional artwork:** created by a professional artist, such as benches, tree grates or trash receptacles;
- **Any other form** of work of art determined by the Arts and Culture Commission to satisfy the intent of this chapter.

What is NOT considered artwork?

- **Reproductions** of original works of art;
- Directional or other **functional elements** such as supergraphics, signing, or color coding, except where those elements are integral parts of original signed artworks;
- Art objects which are **mass-produced** from a standard design;
- Landscaping and **garden features**, except where these elements are designed by the artist and are an integral part of a fine artwork.

What is the value?

- 1% of the first \$100 million of construction valuation
- 0.9% of construction valuation for valuation in excess of \$100 million

Review Criteria

- Artwork **integral part of landscaping/architecture** of the buildings;
- **Easily visible** from public street and be located in an area specifically designated on site plan;
- **Permanent materials** requiring a low level of maintenance;
- Preference to **local artists** living or working in the San Francisco Bay Area
 - Avoid artists whose art already displayed as public art within the City of Cupertino boundaries
- Expressions of obvious bad taste or profanity shall not be approved;
- Artwork shall be identified by an appropriate **plaque or monument**

Recommendation and Next Steps

- Receive a presentation on a public art installation for the development and approve public art application, subject to conditions of the draft resolution.
- The decision of the Arts and Culture Commission is final, unless appealed within 14 calendar days from the date of the hearing.

SummerHill Homes
20840 Stevens Creek Blvd., Cupertino, CA

Public Art

Presentation to the City of Cupertino Arts and Culture Commission

May 18, 2026

Chandra Cerrito / Art Advisors

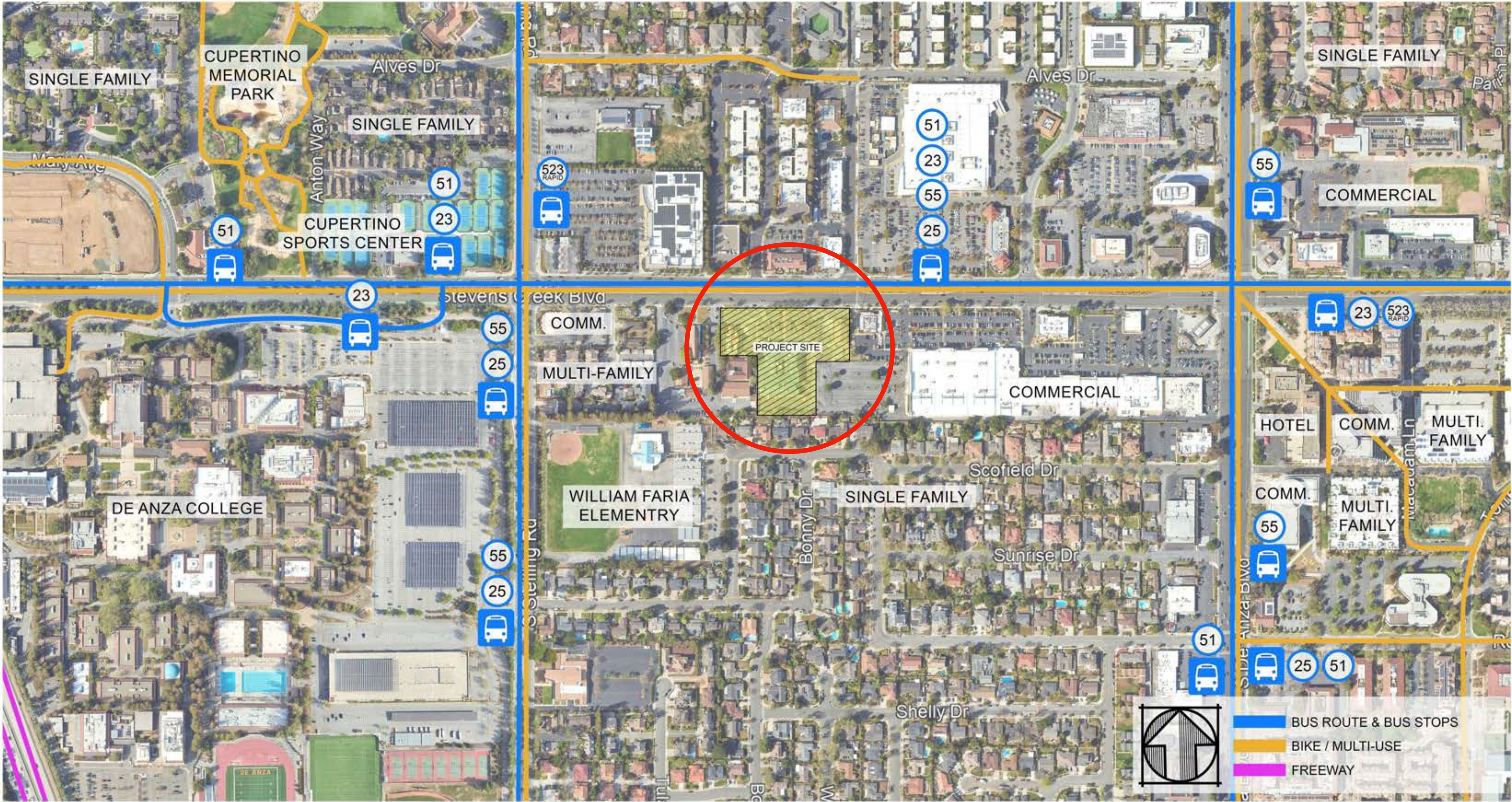
Development and Site Art Location

DEVELOPMENT PROJECT
20840 Stevens Creek Blvd.

- 59 three-story for-sale townhomes
- 8 Mediterranean style buildings
- 2.97-acre site with landscaping
- First homes complete in fall 2027



PROJECT SITE



381.079 20840 Stevens Creek Boulevard
 Cupertino, CA
 March 25, 2025

SITE AERIAL & NEIGHBORHOOD CONTEXT
 A03

PROJECT SITE
Surrounding Context



SITE PLAN



SITE PLAN

○ General artwork location



SITE KEY:

⓪	UNIT NUMBER
BMR	BELOW MARKET RATE UNIT
■ (Purple)	UNIT 1
■ (Yellow)	UNIT 1 ALT
■ (Orange)	UNIT 3
■ (Yellow with *)	UNIT 3 ADAPTABLE (8 TOTAL)
■ (Blue)	UNIT 5

SITE KEY:

---	WALKWAY
...	PUBLIC WALKWAY
---	VEHICLE CIRCULATION
...	BIKE LANE



Artist Selection

ARTIST SELECTION PROCESS

- Reviewed 13 artists with relevant experience
- Interviewed 3 finalists
- Selected Wowhaus

SELECTED ARTIST
Biography and Past Works

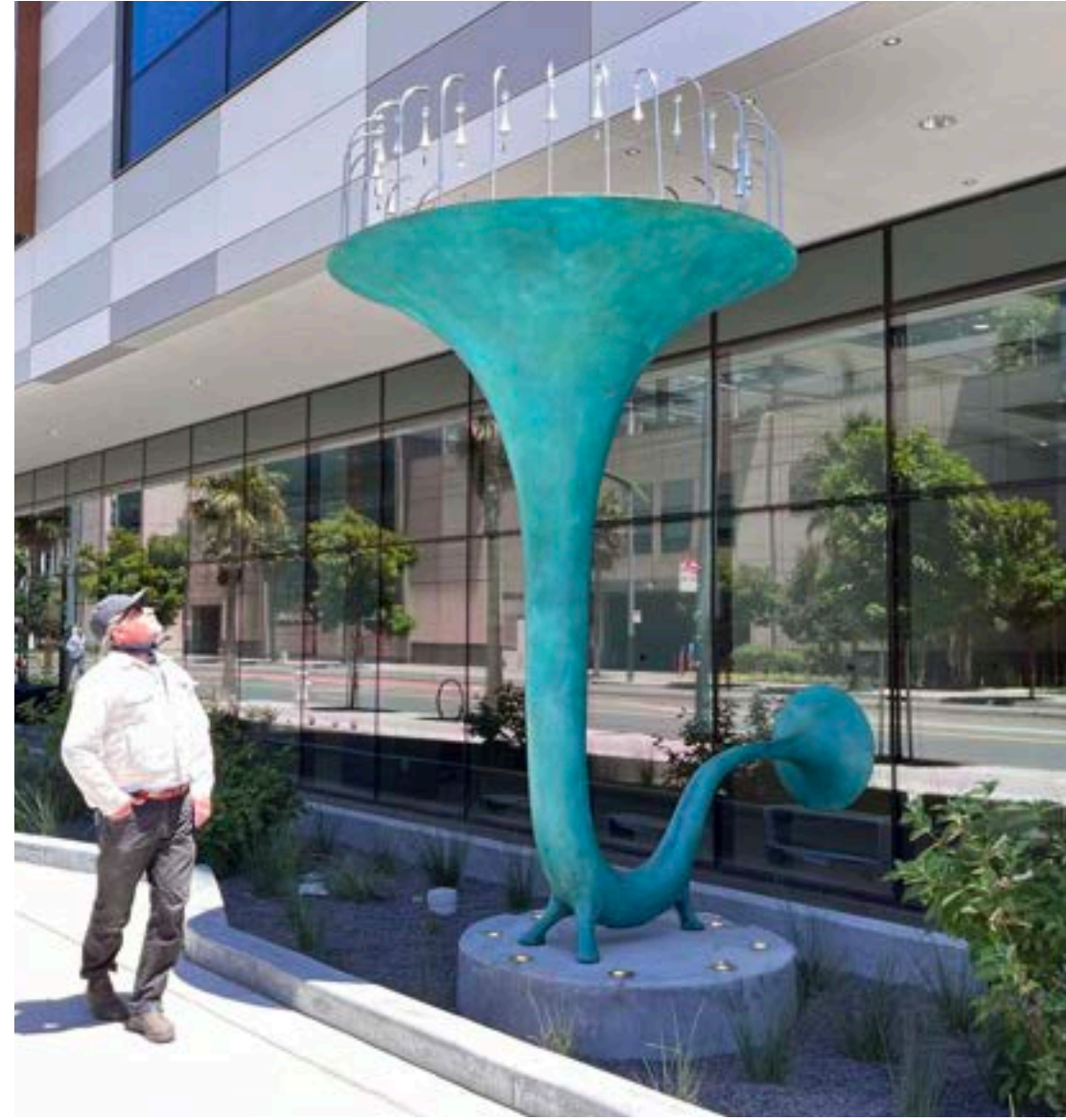
WOWHAUS

Founded in 1997, Wowhaus is a trans-disciplinary art and design team based in the San Francisco Bay Area.

A collaboration between Scott Constable and Ene Osteraas-Constable, Wowhaus has extensive experience creating site-responsive public art.

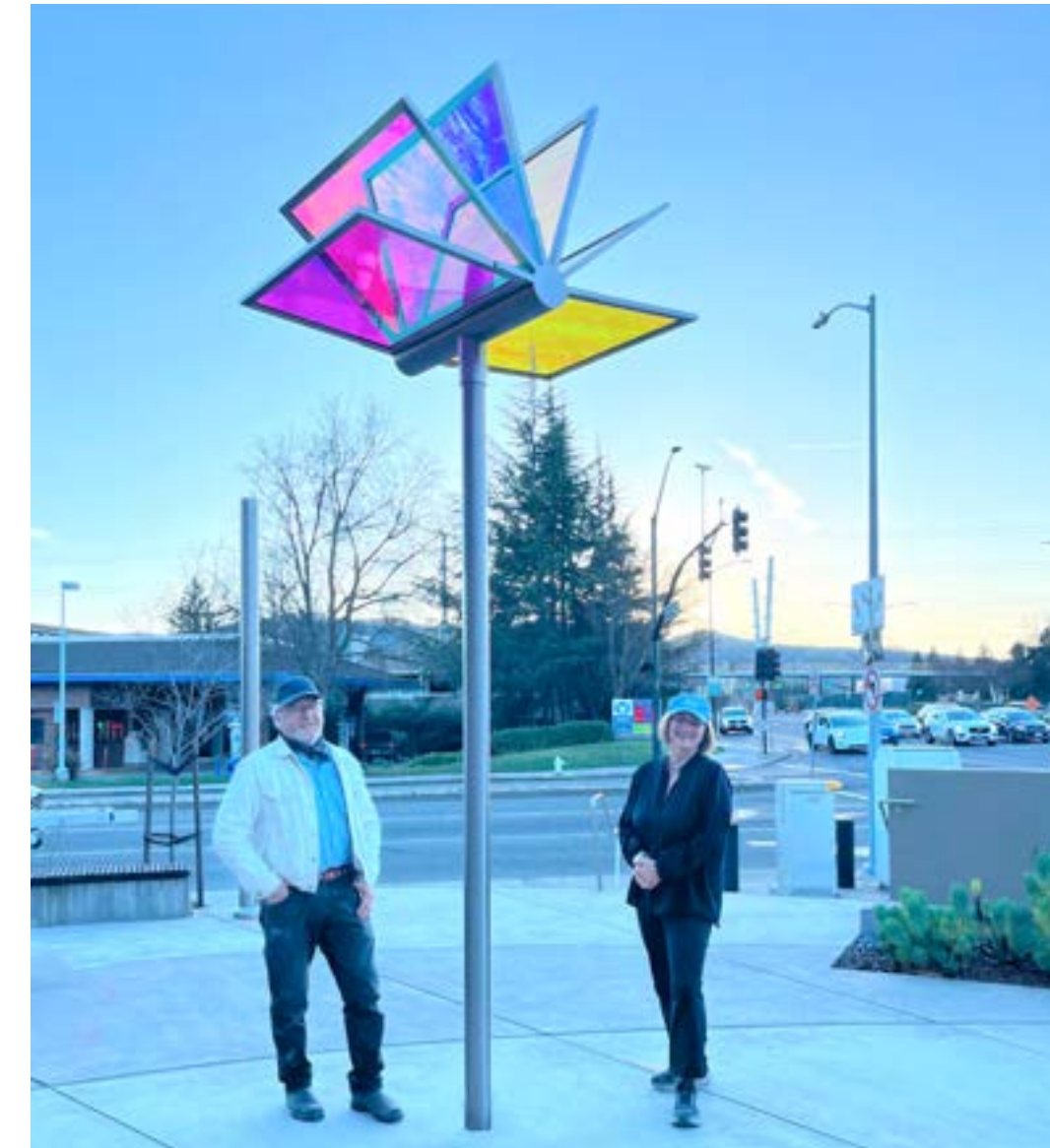
Their work explores cultural, historical and ecological factors that shape a sense of place.

Skyhorn, bronze
UCSF Bayfront
Medical Building, SF



Wishing Wands, stainless steel and crystals
Berryessa Creek Park, San

Abundance, glass mosaic, steel,
and concrete
Ortega Branch Library, SF



Inspire, stainless steel and dichroic glass
San Ramon Public Library

WOWHAUS

SELECT PUBLIC ART COMMISSIONS

- **WATERSONG** Lone Mountain Park, Phoenix, Arizona (Phoenix Public Art Program) 2027
Iconic, large-scale interactive sculpture in a new 60-acre park creates a community hub. Community engagement informed the design, which is inspired by local cultural and ecological history. Wowhaus is collaborating with DIG Landscape Architects.
- **BLOSSOM** Stevens Creek, Cupertino, CA (SummerHill Homes) 2027
Large-scale sculpture with LED lighting will be an iconic landmark for a new housing development along a busy thoroughfare
- **ATTUNED** Cook-Garland Parks, Denver, CO (Denver Public Art Program) Finalists 2027
Landmark sculpture will invite multisensory engagement with the environs, evoking cultural and natural history in a large urban park
- **OUR STORIES** Ross-Broadway Library, Denver, CO (Denver Public Art Program) Finalists 2027
• Architecturally-integrated hand-cut glass mosaic will complement the Usonian architecture of this famed modernist library
- **FLOURISH** Bethesda Park, Denver, CO (Denver Public Art Program) Finalists 2027
Series of dichroic glass and stainless steel sculptures integrated with native plantings will invite insight into native pollinating insects
- **NEXXUS** Tracy Transit Hub, (Tracy Public Art Program) Tracy, 2026
Iconic artwork inspired by native flora and fauna will herald entryway to historic transit station
- **MAGNUS** Great Streets: Main Street, Burlington, VT (Burlington City Arts) 2026
Focal points within a new streetscape, 3 large-scale granite sculptures create seating and evoke local ecological and cultural history
- **BRANT** Lafayette, CA (Lennar Corporation) 2025
Large-scale stainless steel sculpture internally lit with LED lighting is a beacon in the streetscape, casting intricate shadows
- **ALMA** Eden Housing, Castro Valley, CA (Eden Housing) 2025
Landmark sculpture sculpted from reclaimed Live Oak Tree heralds entry to new development
- **AQUADREAM** Rengstorff Aquatic Center, Rengstorff Park, Mountain View, CA (Mountain View Public Art Program) CA 2025
Series of colorful interactive functional sculptures integrated into a new Aquatic Center invite playful engagement
- **SKYHORN** University of San Francisco Medical Center, San Francisco, CA 2024
Monumental 12' h interactive bronze sound sculpture featuring 36 kinetic tubular bells and crystals engages the public, including those with limited to no vision
- **REVERIE** Donelson Public Library, Nashville, Tennessee, (MetroArts) 2024
A series of five large-scale functional Tennessee Marble sculptures activate a 1-acre public greenspace, inviting engagement
- **INSPIRE** San Ramon Public Library, San Ramon, CA (San Ramon Public Art Program) 2024
Engaged community members and library staff in developing interactive dichroic glass sculpture for library entryway

COMMISSIONS CONTINUED

- **DREAMY** East Lake Park, Chattanooga, Tennessee, (City of Chattanooga Public Art Program), 2023
Four vibrant fantastical 7.5' h sculptures invite convivial interaction and imaginative play, evoking the cultural history of the City's oldest park
- **THRIVE** Hayward, CA (Artsource) CA 2022
2-story architecturally-integrated mosaic mural is landmark in the Cityscape. Collaborated with developers and architects
- **MATHER COMMONS** Mather School Plaza, Boston, MA (Browne Fund) 2022
Designed functional sculptures that seat up to 25 people at a time; artwork inspired by history of the nation's oldest school
- **FOREST FRIENDS** Green Bay Botanical Garden Children's Garden, Green Bay, WI 2022
5 interactive large-scale bronze sculptures evoking native species are integrated into the Children's Garden
- **DELTRIDGE KNOW-HOW** Delridge, WA (Seattle Office of Arts & Culture) 2021
Collaborated with Seattle Department of Transportation Landscape Architects; community engagement integral to design
- **QUERCUS** 24th & Harrison, Oakland, CA (Holland Partner Group) 2021
Collaborated with Holland Partner Group Design Team
- **ORCA** Kitsap Middle School, Kitsap School District, Kitsap, WA (Washington Art in Public Places Program) 2021
Collaborated with School District administration, faculty and students
- **A GOOD SIGN** North Tryon Greenroad, Charlotte, NC (Arts & Sciences Council) 2021
Collaborated with Charlotte Department of Transportation and NCDOT Landscape Architects; community engagement in conception and execution
- **WYNADOTTE** Wynadotte Park, Mountain View, CA (Mountain View Public Art Program) 2020
Collaborated with City of Mountain View Parks Department Landscape Architects on series of bronze sculptures
- **WELLSPRING** Coffey Park, Santa Rosa, CA (Santa Rosa Public Art Program) 2020
Collaborated with Carlile Macy Landscape Architects & Santa Rosa Parks Dept. community engagement integral to commission.
- **ASCENT** Pierce College - Fort Steilacoom, WA (Washington Art in Public Places Program), 2019
Engaged Pierce College faculty, staff and students and worked with Pierce College Facilities Department
- **MAKKEWEKS** Oakland Public Art Program, Lake Merritt Park, Oakland, CA (Oakland Public Art Program) 2019
Collaborated with PlaceWorks and City of Oakland Parks Department Landscape Architects
- **GOLDEN SPIRAL** STEM Center, The College of New Jersey, Ewing Township, NJ (New Jersey Arts Commission) 2018
Engaged College of New Jersey faculty and students; collaborated with College Facilities Department & John M. Thomas Landscape Architects
- **UNITY PLAZA OMI HISTORY STAIRSCAPE** San Francisco, CA (San Francisco Arts Commission) 2016
Collaborated with San Francisco Municipal Transit Authority Landscape Architects
- **STORYVANES** Walnut Creek, CA (Terramar Developers & Walnut Creek Public Art Program) 2016
Worked with Bruce Jett Landscape Architects

WOWHAUS

COMMISSIONS CONTINUED

- **GARDEN GUARDIANS** Noe Valley Town Square, San Francisco, CA (San Francisco Arts Commission) 2016
Collaborated with CMG Landscape Architects & San Francisco Parks Department
- **SCUPPERNONG COMMONS** Artplace Environmental Artists in Residence (McColl Center for Art + Innovation), Charlotte, N.C. 2015
Collaborated with LandDesign Landscape Architects
- **SPINNRADL** Cincinnati, OH (Artworks Cincinnati) 2014
Community engagement in conception and execution. Worked with Cincinnati Department of Public Works
- **SPECTRASCAPE** W. Berkeley Library, Berkeley CA (Berkeley Public Art Program) 2014
Collaborated with Harley Ellis Devereaux Architects and library staff; community engagement informed design
- **OASIS** Dublin, CA (AvalonBay Developers), 2013
Collaborated with AvalonBay Landscape Architects
- **TSURU** R. Carr Judicial Center, Denver, CO (Colorado Creative Industries) 2012
Collaborated with Fentress Architects & Civitas Landscape Architects
- **FLUKE** Monterey Bay Marine Sanctuary & Exploration Center, Santa Cruz CA (Santa Cruz Public Art Program) 2012
Collaborated with Thomas Hacker Architect & Landscape Architect; engagement with Museum scientists and staff
- **ABUNDANCE** Ortega Library, San Francisco CA (San Francisco Arts Commission) 2011
Collaborated with City of San Francisco Library Architects & Landscape Architects
- **WATERSHED ART MARKERS** Oakland CA, (Oakland Public Art Program) 2010
Collaborated with Oakland Department of Creeks, Watershed & Stormwater Department and Oakland Public Works Department
- **SUNNYSIDE MENAGERIE** Sunnyside Conservatory Park, SF, CA (San Francisco Arts Commission) 2009
Collaborated with San Francisco Parks Department; community engagement informed design
- **OAKLAND FUSION** Jack London Square, Oakland CA (Ellis Partners, LLC) 2009
- **WISHING WANDS** Berryessa Creek Park, San Jose, CA (San Jose Public Art Program) 2009
Collaborated with San Jose Parks Department and Department of Public Works; community engagement informed design

PUBLIC ART MASTER PLANNING

- **RAIL TRAIL PUBLIC ART MASTER PLAN**, Artplace Grant, Charlotte Center City Partners, Charlotte, N.C. 2015
Created a Public Art Master Plan for a four-mile public greenway that transects the City Center

BRIGHTWALK, McColl Center for Visual Art + Innovation, Charlotte, N.C. 2015

Consulted on public art planning for environmentally-oriented artworks at Brightwalk, a 98 acre mixed-use development.

- **VILLAGE AT MARKET CREEK ART+DESIGN PLAN**, Jacobs Center for Neighborhood Innovation, San Diego, CA 2012
Contributed to a comprehensive public art plan for a 60+ acre community identifying sites & guiding principles for public art.

COMMUNITY ENGAGEMENT & SELECT ARTIST RESIDENCIES

- **ARTIST AMBASSADOR:** Wilton Rancheria Tribe, Sacramento Public Art Program, Sacramento, CA 2026
- **McCOLL CENTER FOR ART & INNOVATION**, Artplace Environmental Artists in Residence, Charlotte, N.C. 2015
- **HEADLANDS CENTER FOR THE ARTS**, Marin County, CA 2013
- **MICHAEL J. KOHLER ARTS CENTER**, "Connecting Communities" Artists in Residence, Sheboygan, WI, 2010
- **MILDRED'S LANE**, Beach Lake, PA 2001 & 2009
- **"CRAFT & DESIGN: HAND, MIND & THE CREATIVE PROCESS"**, Haystack w/ Cooper-Hewitt National Design Museum, Smithsonian Institution, Maine, 2004

SELECT PUBLICATIONS

2025 & 2024 **WOWHAUS** : "50 Top Public Art Stars" The Economic Power of Public Art, CODAWorx
2023 CODAMagazine: "Celebrating the Bay Area"
2021 "Derivsh", Land Art Generator Institute
2021 "Art that Commemorates", CODA Magazine
2021 "Coffey Park Reopens at Long Last, To Rave Reviews", Press Democrat
2019 "Lake Merritt and Snow Park Project", Piedmont Exedra

SELECT AWARDS/GRANTS

CODAWorx Merit Award for Public Art: Education 2021
A1 Artist Travel Grant – Rome & Switzerland (S.C.) 2013
Wornick Distinguished Visiting Professor of Woodworking, California College of Arts and Crafts (S.C) 2010
Center for Cultural Innovation Investing In Artists Grant Recipient (S.C) 2008
City of Oakland Individual Artist's Grant (E.O.C) 2006

SELECT EXHIBITIONS

2019 The Art of Resilience, World Bank Group Exhibition
2016 Free (for) Free, Mildred's Lane Complex(ity), Narrowsburg, N.Y.
2016 Craft Atelier II, Storefront Lab, San Francisco, CA
2014 Reimagining Progress: Production, Consumption and Alternative Economies, David Brower Center, Berkeley, CA
2014 If A Tree Falls, University of California at Davis Design Museum, Davis, CA
2013 This Will Never Work, Southern Exposure, San Francisco, CA
2012 Big, Big Backyard: Contemporary Community-Engaged Art, College of the Canyons, Los Angeles
2012 Banff, Banff New Media Symposium, Banff Centre, Canada
2011 John Michael Kohler Arts Center, "Connecting Communities" Residency, Sheboygan, WI

EDUCATION

E.O.C.: BFA, Univ. of Massachusetts, Amherst, MA, 1987
S.C.: BFA - Sculpture, School of the Art Institute of Chicago 1982-85
Foundations/Architecture, Rhode Island School of Design 1981-82

Proposed Artwork

BLOSSOM

by

Wowhaus

ARTWORK RENDERING

BLOSSOM





Artist Statement

An iconic landmark sculpture that enriches and elevates SummerHill's residential development, *Blossom* is a colorful landmark sculpture that will be highly visible to passerby on Stevens Creek Boulevard, both day and night.

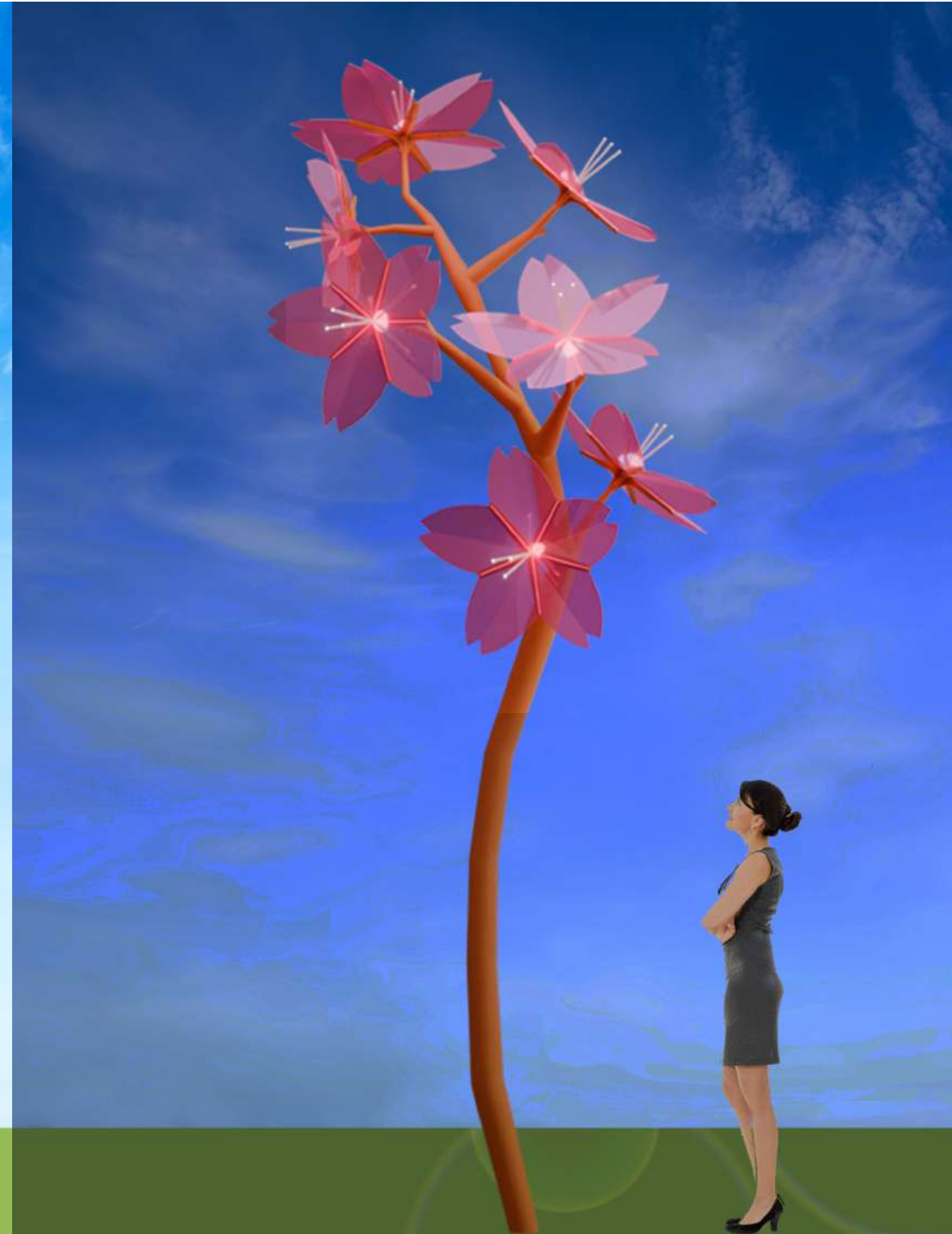
Evoking the vibrant beauty of cherry blossoms, this sculpture honors the agricultural history of Cupertino, a region where cherry orchards once were widely cultivated. The artwork is also inspired by the rich symbolism of cherry blossoms, known to symbolize prosperity, good fortune, renewal, community and the beauty of life and nature in many cultures, especially Asian communities.

Blossom will be installed at the center of a round planting bed within the project's pedestrian plaza adjacent to Stevens Creek Boulevard. It will be surrounded by complementary plantings. The sculpture is approximately 17'-5" high x 6'-6" at its widest, and its flowers are each approximately 2'-11" wide. Fabricated from highly durable weathering steel (often known as Corten Steel) with flowers made of exterior grade polymer, powder-coated stainless steel, and integrated LED lighting, the artwork is designed to be highly durable and low-maintenance.

ARTWORK DRAWING
BLOSSOM



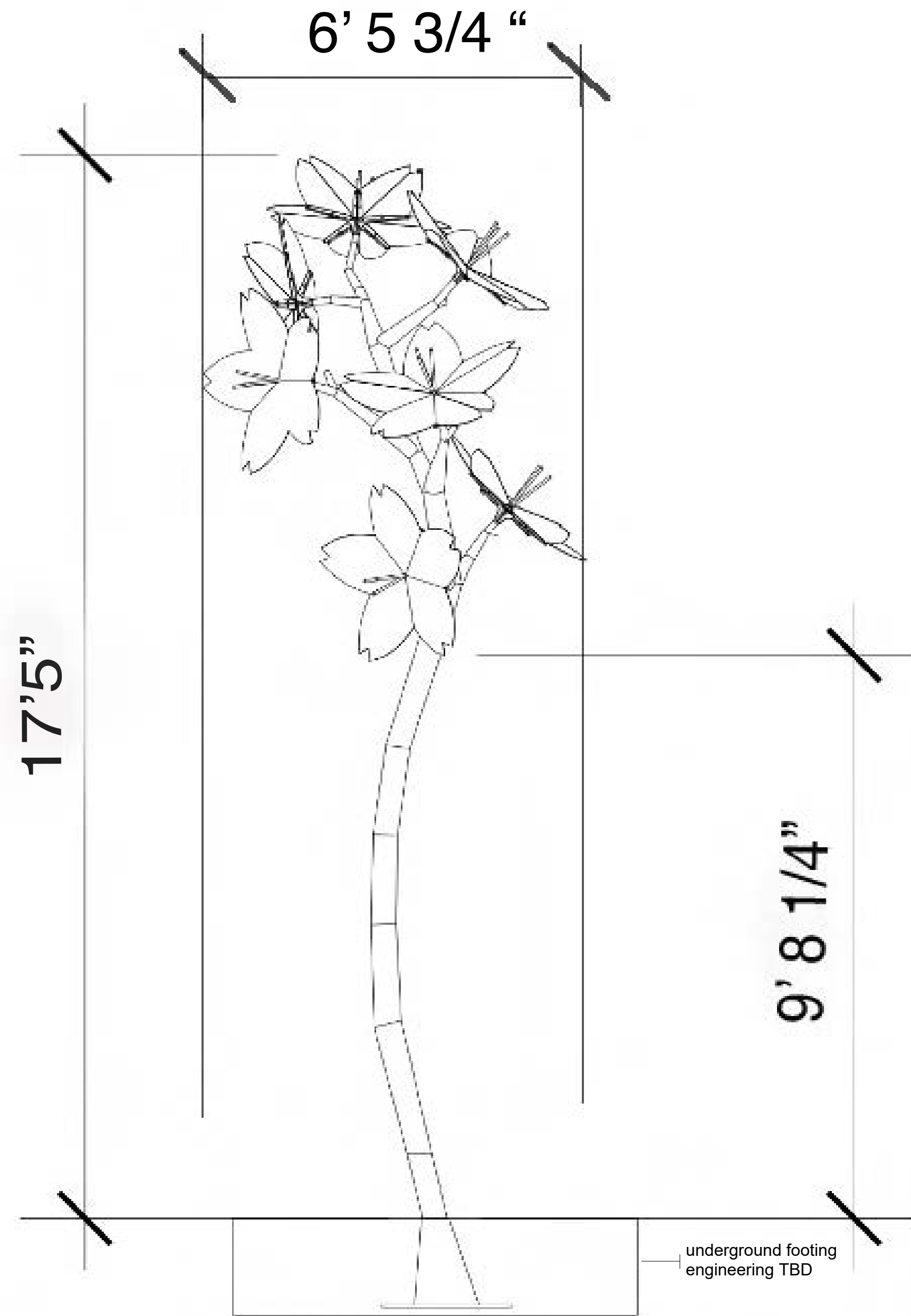
Daytime view



Evening view

ARTWORK DIMENSIONS

BLOSSOM



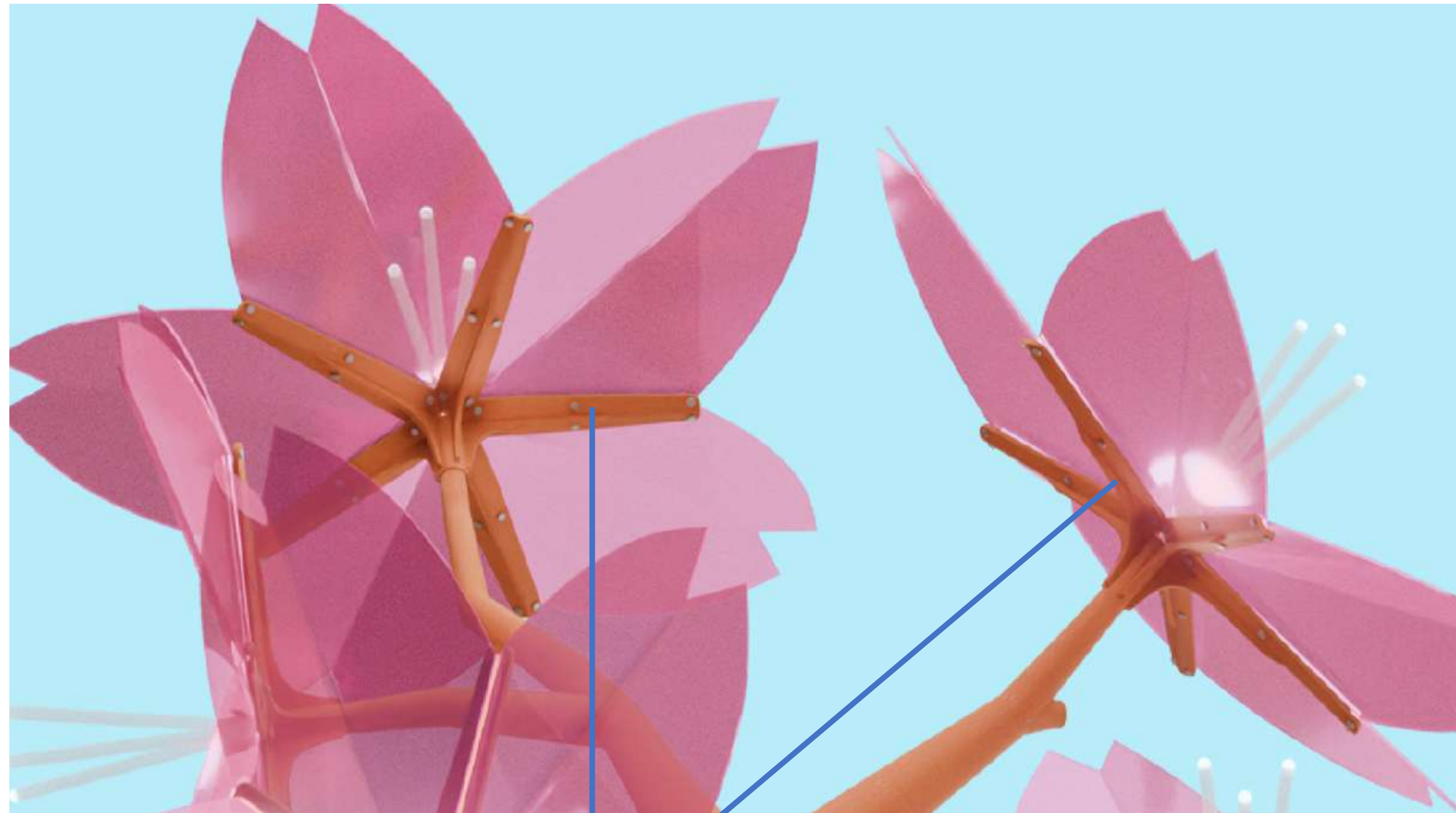
BLOSSOM



BRANCH: WEATHERED (CORTEN) STEEL



BLOSSOM



BLOSSOMS

Stainless steel framing and hardware; painted to match weathering steel with exterior grade alkyd enamel

Exterior Grade LED Light Strips in channel behind petals – Pink and/or White

Stamens: Sandblasted Acrylic Rod

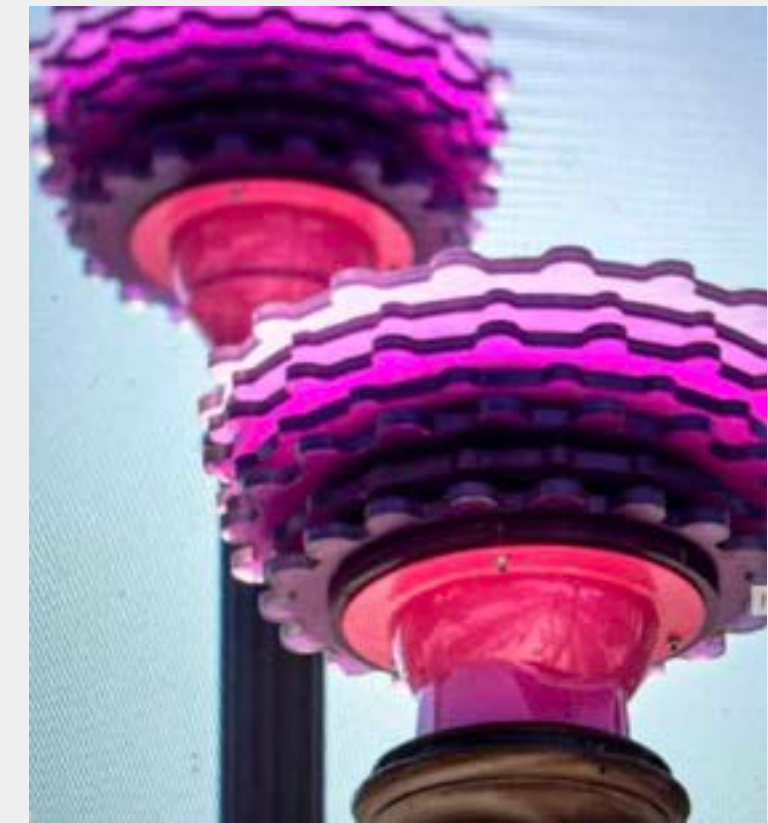
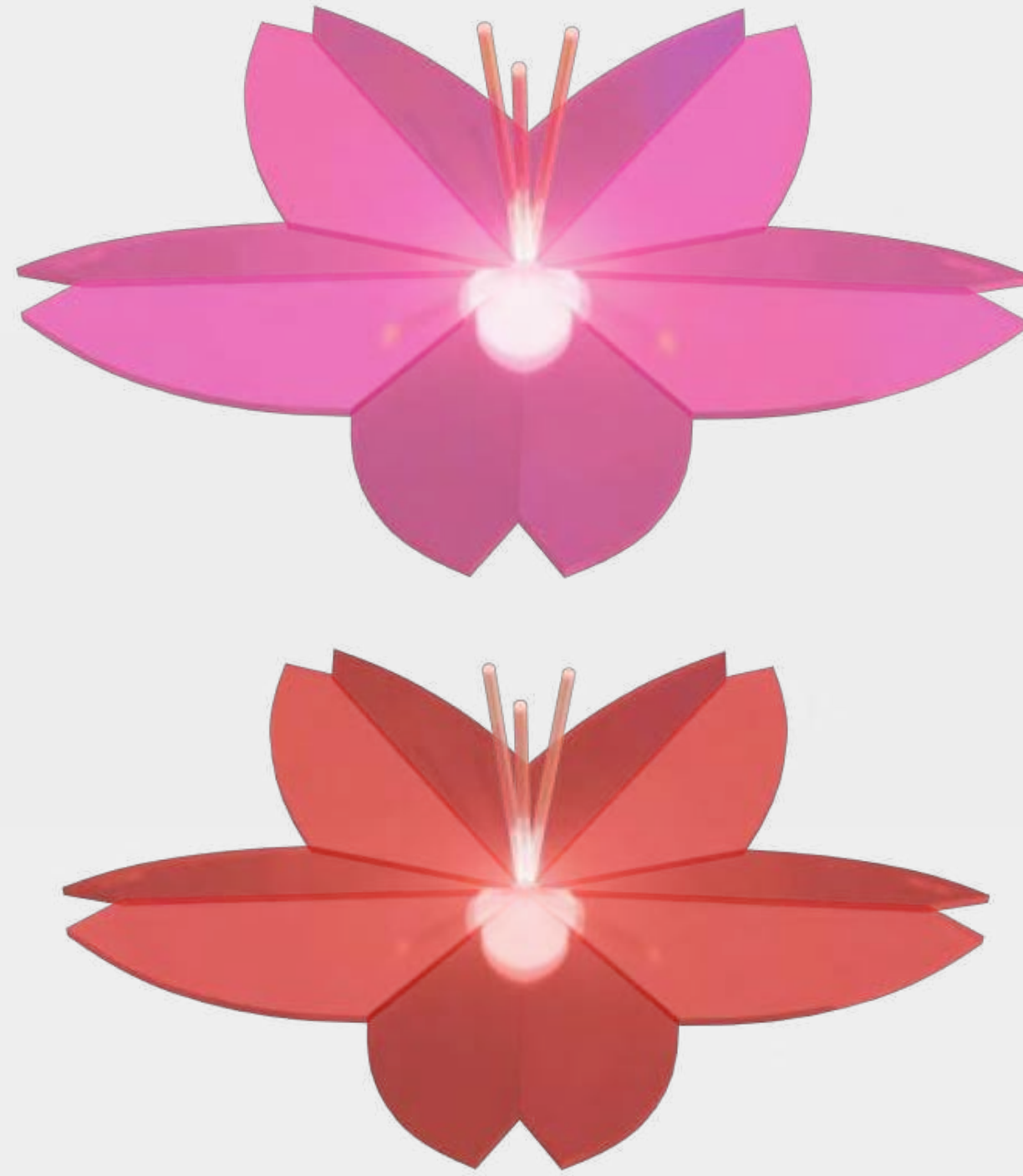
7 Blossoms, each approx. 2'11" D



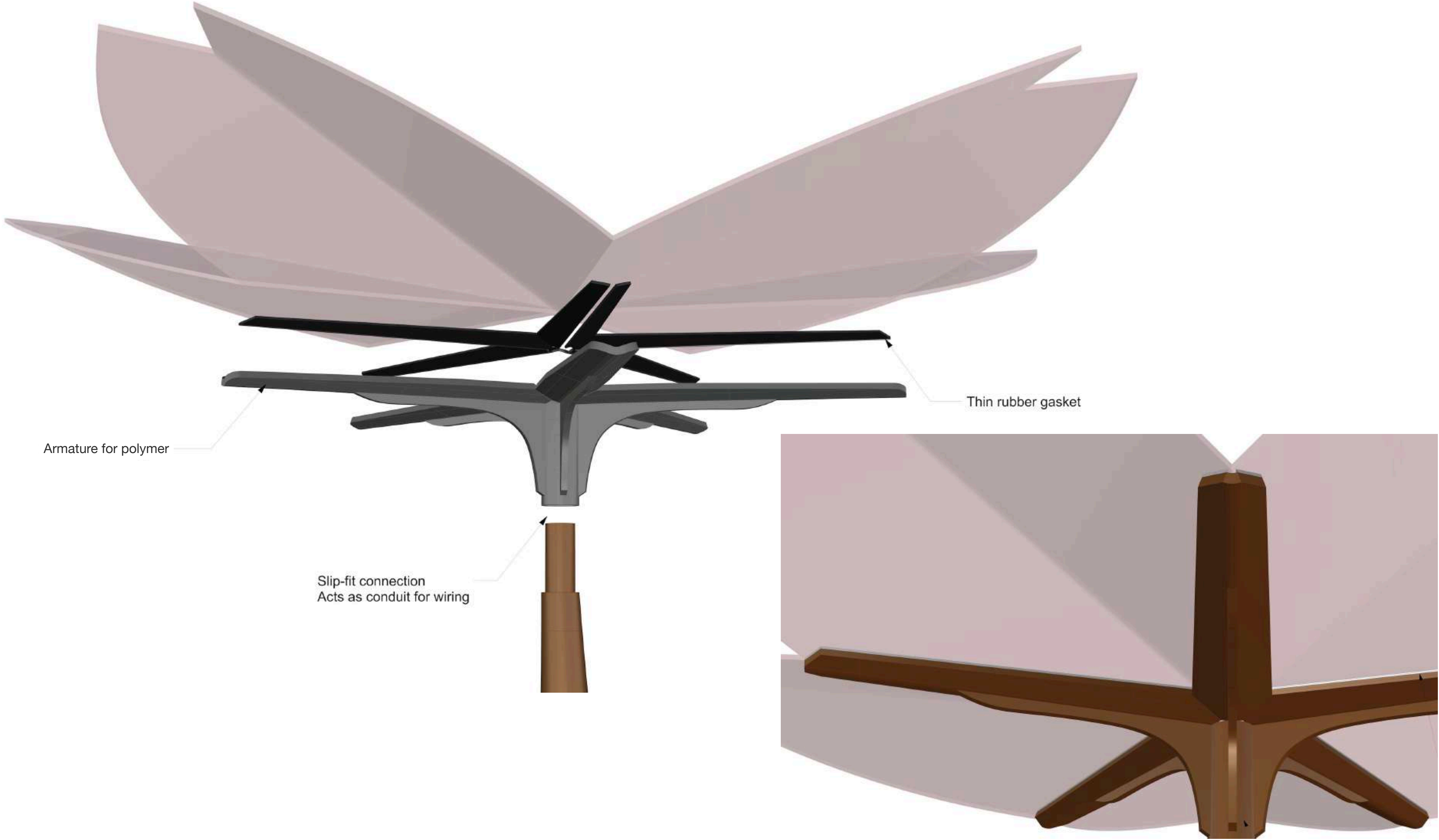
BLOSSOM



BLOSSOMS
Exterior Grade Polymer with LED Lighting



BLOSSOM



IN SITU RENDERING

BLOSSOM



Site Integration and Identifying Plaque

PLAZA PLANTING AND LANDSCAPE PLAN



CONCEPT



CONCEPT

RADIAL PAVER PATTERN



PYRUS CALLERYANA 'CHANTICLEER'



GREVILLEA LANIGERA 'COASTAL GEM'



BULBINE FRUTESCENS



LOMANDRA 'ARCTIC FROST'



DIETES 'SUNSTRIPE'



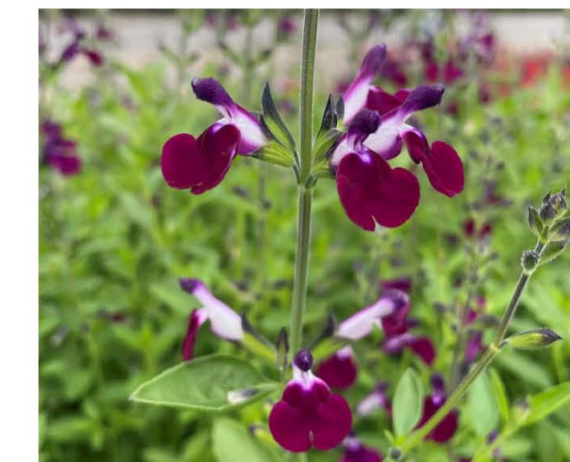
CISTUS 'VICTOR REITER'



SALVIA GREGGII 'PINK PREFERENCE'



ROSA 'PEACH DRIFT'



SALVIA GREGGII 'AMETHYST LIPS'

TREES, SHRUBS, GRASSES, & GROUNDCOVERS

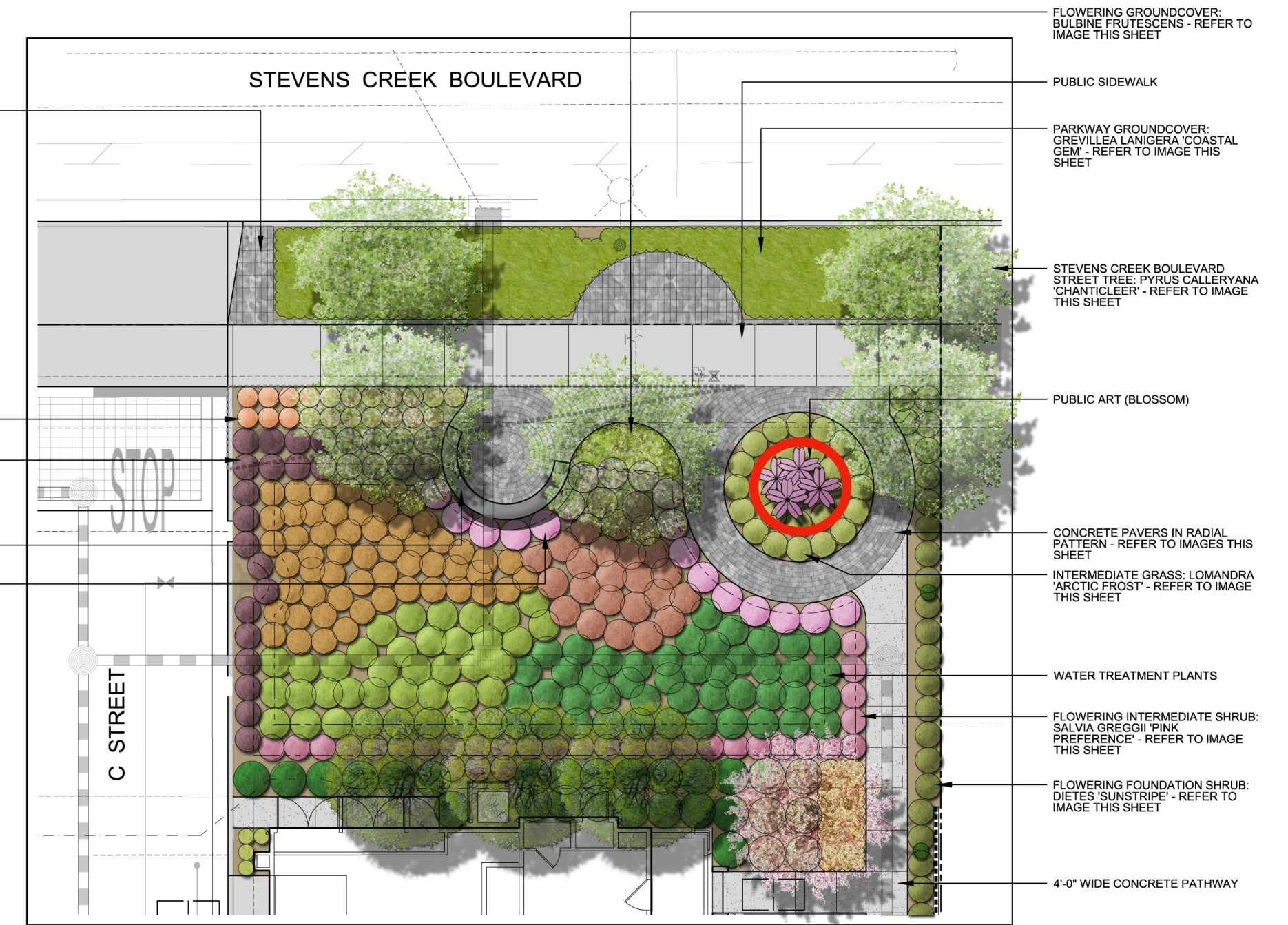
EXISTING CONCRETE PAVERS IN PARKWAY TO BE REMOVED AND REPURPOSED. RELOCATE AND INSTALL REPURPOSED PAVERS TO THE THE FOUR (4) 4'-0" WIDE BANDS ON EACH SIDE OF THE DRIVEWAYS FOR A STREET AND C STREET ALONG WITH AN AREA OFF THE PUBLIC SIDEWALK.

FLOWERING FOREGROUND SHRUB: ROSA 'PEACH DRIFT' - REFER TO IMAGE THIS SHEET

FLOWERING INTERMEDIATE SHRUB: SALVIA GREGGII 'AMETHYST LIPS' - REFER TO IMAGE THIS SHEET

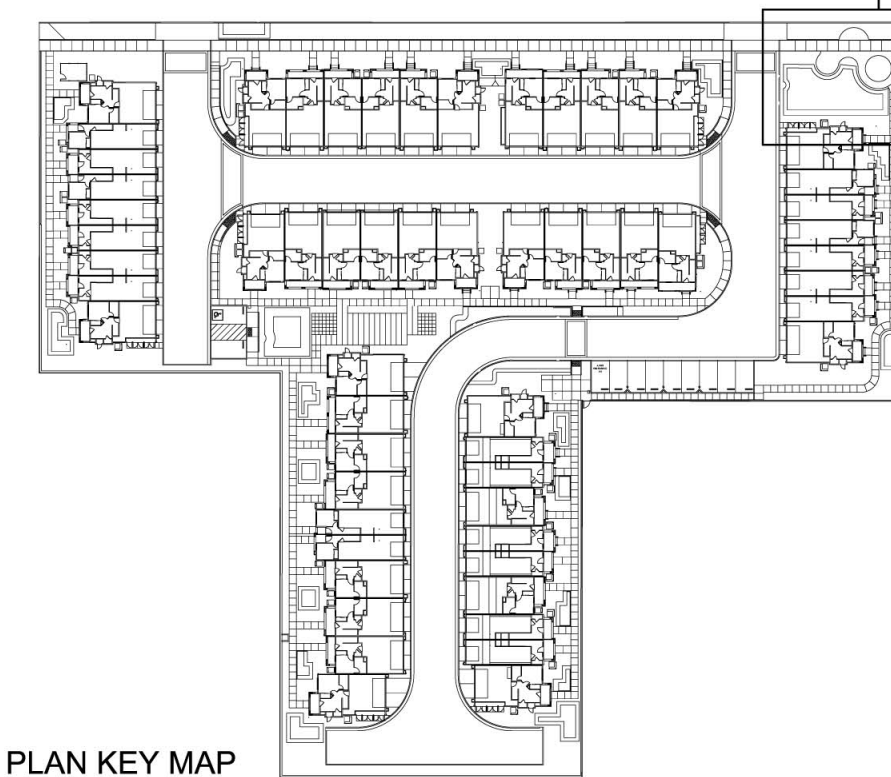
CAST-IN-PLACE CONCRETE SEATWALL WITH SKATE DETERRENTS

FLOWERING INTERMEDIATE SHRUB: CISTUS 'VICTOR REITER' - REFER TO IMAGE THIS SHEET



PLAZA ENLARGEMENT

Scale: 1/8"=1'-0"



STEVENS CREEK BOULEVARD PLAZA ILLUSTRATIVE

L.1.1



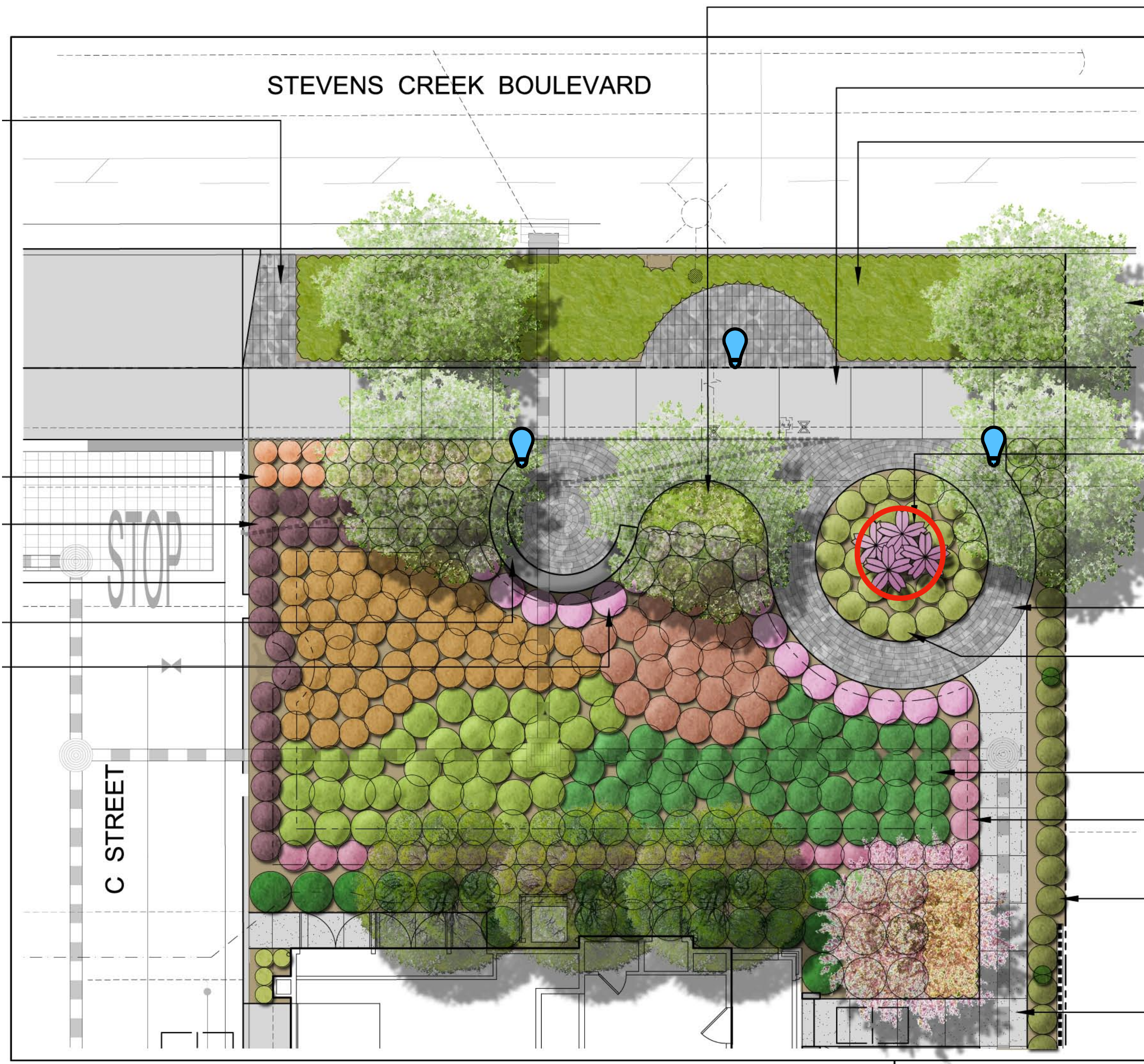
20840 STEVENS CREEK BOULEVARD
CUPERTINO, CA

FEBRUARY 2026

PLAZA LANDSCAPE PLAN

Artwork location

42" high LED bollard lights aiming down to illuminate walkway (approximate locations)



STEVENS CREEK BOULEVARD

C STREET

FLOWERING GROUNDCOVER: BULBINE FRUTESCENS - REFER TO IMAGE THIS SHEET

PUBLIC SIDEWALK

PARKWAY GROUNDCOVER: GREVILLEA LANIGERA 'COASTAL GEM' - REFER TO IMAGE THIS SHEET

STEVENS CREEK BOULEVARD STREET TREE: PYRUS CALLERYANA 'CHANTICLEER' - REFER TO IMAGE THIS SHEET

PUBLIC ART (BLOSSOM)

CONCRETE PAVERS IN RADIAL PATTERN - REFER TO IMAGES THIS SHEET

INTERMEDIATE GRASS: LOMANDRA 'ARCTIC FROST' - REFER TO IMAGE THIS SHEET

WATER TREATMENT PLANTS


FLOWERING INTERMEDIATE SHRUB: SALVIA GREGGII 'PINK PREFERENCE' - REFER TO IMAGE THIS SHEET

FLOWERING FOUNDATION SHRUB: DIETES 'SUNSTRIPE' - REFER TO IMAGE THIS SHEET

4'-0" WIDE CONCRETE PATHWAY

PLAZA ENLARGEMENT

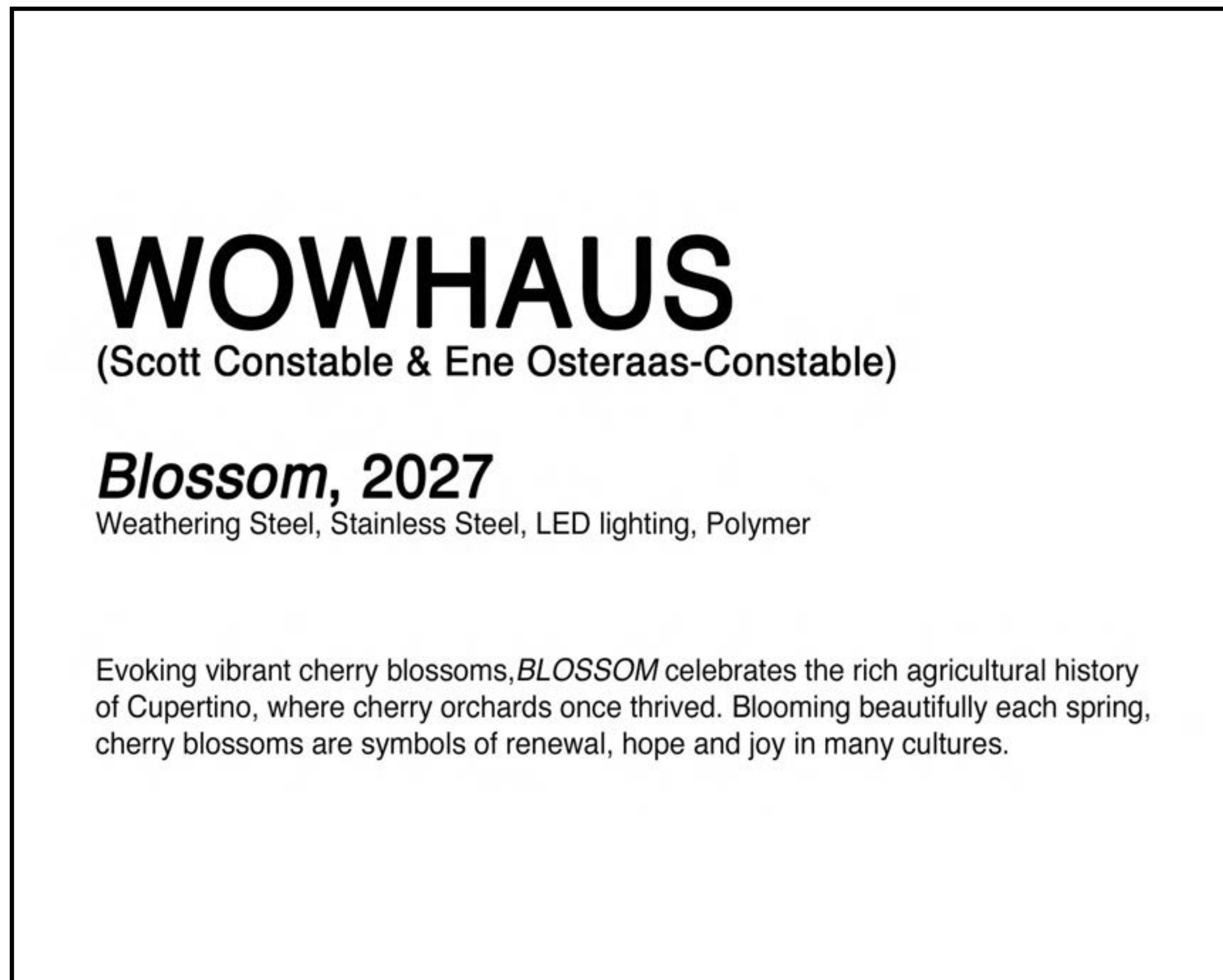
IDENTIFYING PLAQUE

 Plaque location (approximate)



IDENTIFYING PLAQUE

Plaque Design



Cast aluminum, 8" x 10"

Possible Finish Style:
Dark background



Mounting Approach:
On post within plantings



MAINTENANCE PLAN
Public Art by WOWHAUS (Scott Constable & Ene Osteraas-Constable)
BLOSSOM
20840 Stevens Creek Boulevard, Cupertino, CA

Party Responsible for Artwork Maintenance: PROPERTY OWNER

Artist

WOWHAUS (Scott Constable & Ene Osteraas-Constable)
885 Jonive Road, Sebastopol, CA. 95472
(510) 390-1724
studiowowhaus@yahoo.com
<https://www.thewowhaus.com>

Artwork

Blossom, 2027
Weathering Steel, Polymer, Stainless Steel, Exterior Grade Paint, LED Lighting
Approximately 17'-5" high x 6'-6" at its widest

Fabricator(s)

Heeler MetalCraft
Erda, UT
843.437.5677
matt@heelermetalcraft.com

Art Lighting

LED fixture specifications to be provided when identified in final prototype phase.

Lighting Supplier

Contact information to be provided when identified in prototype phase.

MATERIALS

Weathering Steel, Polymer, Stainless Steel, Exterior Grade Paint, LED Lighting.
Details and specification sheets TBD in prototype phase.

PRELIMINARY MAINTENANCE PLAN

MAINTENANCE INSTRUCTIONS

DO NOT POWERWASH or use harsh chemicals, abrasives, or stiff bristle brushes. Always test materials on an inconspicuous area before proceeding. Please consult with WOWHAUS before removing any graffiti or making repairs.

I. Regular Maintenance Schedule

At least once every six months, maintenance crew should take the following steps:

1. Examine sculpture and rinse gently with water and soft cloths to remove dust and debris as needed.

Dust First: Always remove loose dust with a soft, dry brush or cloth before wetting the sculpture to prevent mud from forming in crevices. Special care should be taken in cleaning the flower elements, ensuring there is no pressure or force applied to the petals and that the wiring remains undisturbed.

II. Periodic Maintenance Schedule

1. At least once every year or as needed, maintenance crew should wash the sculpture.

- **Soap:** Use 2–3 drops of mild, **unscented** dish soap (e.g., Ivory Liquid) in a gallon of distilled water. Specialized sculpture cleanser such as Renaissance Vulpex Soap may be used.
- **Dust First:** Always remove loose dust with a soft, dry brush or cloth before wetting the sculpture to prevent mud from forming in crevices.
- **Test Area:** Always test any soap on a small, inconspicuous area first.
- **Rinse Well:** Ensure all soap residue is thoroughly rinsed away, as dried soap can attract more dirt or cause long-term damage.
- **Dry Completely:** Use a microfiber cloth to dry completely

2. At least once every 6 months check that LEDs are functioning.

III. Repairing Damage

A. Graffiti METAL:

In case of graffiti on the weathering steel, please use a phased approach, using the recommended techniques in the order below. **Always test an inconspicuous area first.** *The goal is to match the graining and texture as much as possible. Be sure to feather out the area that is repaired with the surrounding area in order to best blend the repair with the overall sculpture.*

1). The most effective methods include applying specialized, non-abrasive, high-pH graffiti removers (like Bare Brick Stone & Masonry) followed by a spot cleaning with hot water to thoroughly remove all solvent. Follow manufacturer's directions. Dry with a soft cloth.

https://www.graffitiremovalinc.com/products/barebrickstoneandmasonry?gad_source=1&gad_campaignid=22583039670&gbraid=0AAAAAC4mUEv7IRBroX_xPlj42qUnteBgs&qclid=Cj0KCQjw8PDPBhCeARIsAOJwmWVqwIEqbqUJzmNiQ2ER_MQbCC4j p22ee-om7k1Sdm5P-ZLVzrA1nroaAqWhEALw_wcB

Gentle cleaning with solvents like acetone or MEK can also be used. Follow up with a wire wheel on a grinder if necessary.

2) If this is not effective, use a palm sander with 60 grit.

3) If this does not work, use a grinder with an abrasive or hire a mobile sandblaster to selectively sandblast the area, protecting the surrounding area.

4) Corten + Rust Accelerator may be helpful in restoring the rust finish of the weathered steel:

<https://www.cortenplus.com/us/products/rust-accelerator/>

FLOWER PETALS: Removing graffiti requires gentle, specialized cleaners to avoid melting or crazing the surface. Use soft cloths, isopropyl alcohol, or dedicated, safe removers like Sensitive Surface Graffiti Remover to safely remove ink and paint, avoiding harsh solvents, abrasive pads, and direct sunlight during cleaning. Always test on an inconspicuous area first, as harsh solvents like acetone will damage the surface.

B. Other possible damage

- Dents or deep scratches in metal can be repaired by a skilled metalworker experienced with weathering steel or a professional metal sculptor
- Petal elements of flowers and LED lighting can be individually removed and replaced as needed; specific instructions will be provided upon delivery of sculpture

C. Lighting

Repair instructions TBD in prototype phase.

ESTIMATED SCHEDULE

Estimated Schedule

June 2026	SummerHill Contracts Artist for Fabrication/Installation
July 2026	Engineering and Permit Submittal
September 2026	Permit Issued; Art Fabrication Start
May/June 2027	Fabrication Complete; Installation on Site
October 2027	TCO for First Homes



Thank you!

Additional Information

ESTIMATED COSTS



**Cupertino Public Art
Eligible Costs Worksheet**

ITEM	ESTIMATED COST	ACTUAL COST	DATE VERIFIED
Artwork price	\$170,405.00	\$	
• Materials (included)	\$ -	\$	
• Fabrication (included)	\$ -	\$	
• engineering fees	\$ 7,200.00	\$	
Rendering fees	\$ 1,325.00	\$	
Landscape Architect's fees	\$ 9,900.00	\$	
Art Consultant's fees	\$ 21,000.00	\$	
Lighting Consultant's fees	\$ -	\$	
Transportation of artwork	\$ 5,700.00	\$	
• shipping (included)	\$ -	\$	
• crating (included)	\$ -	\$	
• truck rental (included)	\$ -	\$	
Installation of artwork	\$ 16,695.00	\$	
• site preparation* (footing)	\$ 4,000.00	\$	
• electrical conduit (75LF, \$35/LF)	\$ 2,625.00	\$	
• labor (included)	\$ -	\$	
• professional fees (included)	\$ -	\$	
• equipment rental (included)	\$ -	\$	
• special hardware/tools (included)	\$ -	\$	
Pedestal or display costs**	\$ -	\$	
Lighting for artwork (included in Art \$)	\$ -	\$	
Identification plaque	\$ 1,000.00	\$	
Contingency (1.53%)	\$ 3,669.71	\$	
TOTAL	\$243,519.71	\$	

*Directly related to the installation of the artwork (ie: trenching for lighting conduit, piping for water if water was not previously included in the project, concrete footings, etc.)

**If not already included in the artwork price.

INSTALLATION IMAGES



ACC 05-18-2026

Staff and Commission
Reports

Presentations

Arts and Culture Commission

Council Work Program



**CITY OF
CUPERTINO**

Council Work Program Update

- CC Study Session 10/21/2025
- CC Requested follow-up:
 - Another City Council study session.
 - A separate art fund exists and how it is managed.
 - Clarify how the Arts and Culture Commission can be involved earlier in the development review process without delaying projects.
 - Prepare a summary of the Arts and Culture Commission's duties under the Municipal Code and report on how those duties have been met or could be further addressed.
 - Identify ways to promote new art installations and showcase existing pieces.
 - Update the City's art tour and website to include recent additions and provide accessible options such as a foldable map for residents without the app.
 - Include De Anza College art installations as part of the City's broader public art inventory and collaboration efforts.