

# Countywide Trails Master Plan

November, 1995

## NOTE

Proposed trail routes indicated shall not be considered specific trail alignments; such alignments shall be obtained and developed pursuant to the trail implementation recommendations set forth in Santa Clara County General Plan. Trail dedications may only be requested along routes as are generally shown on this map. For further information on trail alignments and General Plan policies, please contact the Santa Clara County Parks and Recreation Department at (408) 358-3147.

## THIS MAP IS NOT A TRAIL GUIDE

This map is a planning tool. Many of the routes or staging areas identified on the Map are simply proposed and not open to the public for any purpose. This map does not convey any rights to the public to use any trail routes shown on this drawing; nor does this map exempt any person from trespassing charges. For copies of maps about existing trails that are available for public use, contact the Santa Clara County Parks and Recreation Department.

Attachment A

Bicycle Pedestrian Commission  
Agenda Item #3  
March 15, 2023

# Countywide Trails Master Plan Map Update Project

Rebecca Coates-Maloon, Countywide Trails Program Manager

Presentation to City of Cupertino Bicycle Pedestrian Commission

March 15, 2023

### Legend (see text for explanation)

- Existing County Parks
- Other Public Recreation, Park or Open Space Lands of Regional Significance
- Generalized Urban Service Areas / Incorporated Areas
- Note: Direct responsibility for trail alignments and implementation of trail routes within Urban Service / Incorporated Areas is that of the City in which a particular trail route is planned.
- Proposed trail routes, are generally enclosed as follows:
  - Within Road
  - Right-of-way
  - Right-of-way with Parallel Trail;
  - Right-of-way with Parallel Trail;
  - Right-of-way and Within Private Property Parallel to the Road
- Note: Unincorporated County Jurisdiction-- Proposed trail route to be considered when landowner is a willing participant -- see Trail Policy
- Trail Route Within Other Public Lands
- Trail Route Within Private Property
- Note: Unincorporated County Jurisdiction -- Proposed trail route to be considered when landowner is a willing participant -- see Trail Policy
- Staging Areas
  - Existing Staging Area
  - Proposed Staging Area
  - General Area of Evaluation for New Regional Staging Areas
- Note: Existing staging areas shown are based on information available in the Countywide Trails Master Plan for park, recreation, and open space areas
- Possible points of connection with an Adjacent County / Agency Trail Route
- Note: Existing connections are shown as C33 and all trail connections

- KEY SUB-REGIONAL TRAIL ROUTES
- 01 Malibu Creek / Page Mill Trail (Siemens Road - Partial)
  - 02 Stevens Creek Trail (Siemens Road - Partial)
  - 03 Quakana Trail (Siemens Road - Partial)
  - 04 Los Gatos Creek Trail (Siemens Road - Partial)
  - 05 Coyote Creek / League Creek Trail (Siemens Road - Partial)
  - 06 West Valley Trail (Siemens Road - Partial)
  - 07 Morgan Hill / Cross Valley Trail (Siemens Road - Partial)
  - 08 San Martin / Cross Valley Trail
- KEY CONNECTOR TRAIL ROUTES
- C1 San Francisco / Los Trancos Creeks Trail
  - C2 Adobe Creek Trail (Siemens Road - Partial)
  - C3 Calabazas Creek Trail
  - C4 Hetch-Hetchy Trail
  - C5 San Geronimo / Saratoga Creeks Trail
  - C6 Calera Creek Trail
  - C7 Calabazas Trail (Siemens Road - Partial)
  - C8 Sulphur Trail
  - C9 Southern Pacific Rail Trail
  - C10 Quakana / Redwood / Calera Trail
  - C11 Calera / Santa Teresa Trail
  - C12 Valley Avenue Trail (Siemens Road)
  - C13 Silver Valley Trail
  - C14 Silver Creek Loop Trail (Siemens Road - Partial)
  - C15 South Mountain Trail
  - C16 Willow Springs Trail (Siemens Road)
  - C17 Main Street Trail
  - C18 Paradise Valley Trail (Siemens Road)

Note: The following policies relate specifically to proposed trail routes shown on private property. See the Countywide Trails Master Plan text for policy code references and more information.

Policy Code - Policy

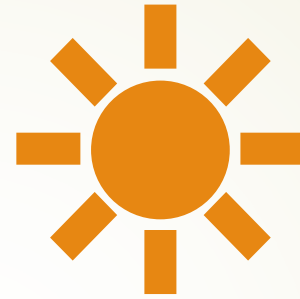
PR-TS 2.3 Trail Routes or Regional Staging Areas shown on the Countywide Trails Master Plan Map in areas currently designated on the County General Plan Land Use Map as Agriculture shall not be required (including easements) or developed outside of County road right-of-way and/or easement. (1) The land use designation is amended by a non-Agriculture designation, or (2) there is specific interest or consent expressed by a willing property owner / seller.

PR-TS 2.4 Trail Routes or Regional Staging Areas shown on the Countywide Trails Master Plan Map in areas currently designated on the County General Plan Land Use Map as Agriculture shall not be required (including easements) or developed outside of County road right-of-way and/or easement.



SANTA CLARA COUNTY PARKS

# Countywide Trails Master Plan Overview



SANTA CLARA  
COUNTY PARKS



# Countywide Trails Master Plan (1995)

**Vision:** “[P]roviding a network of trails that connects cities to one another, connects cities to the County’s regional open space resources, connects County parks to County parks, and connects the northern and southern urbanized regions of the County...”



SANTA CLARA  
COUNTY PARKS

# CWTMP Key Concepts

---

Trails of countywide significance – i.e., not all trails in Santa Clara County

---

Conceptual routes, not detailed plan of trail alignments

---

Emphasizes use of public lands

---

Guide for County's work on trails

---

Coordinated vision for existing external trail plans / efforts – does not pre-empt local trail plans

---





# CWTMP Map

## Santa Clara County COUNTYWIDE TRAILS MASTER PLAN Update



### III. COUNTYWIDE TRAILS MASTER PLAN MAP

Final Report  
Santa Clara County Trails Plan Advisory Committee

Adopted November 14, 1995  
Santa Clara County Board of Supervisors

## Santa Clara County Trails Master Plan Update

County of Santa Clara Parks and Recreation Department

### Countywide Trails Master Plan

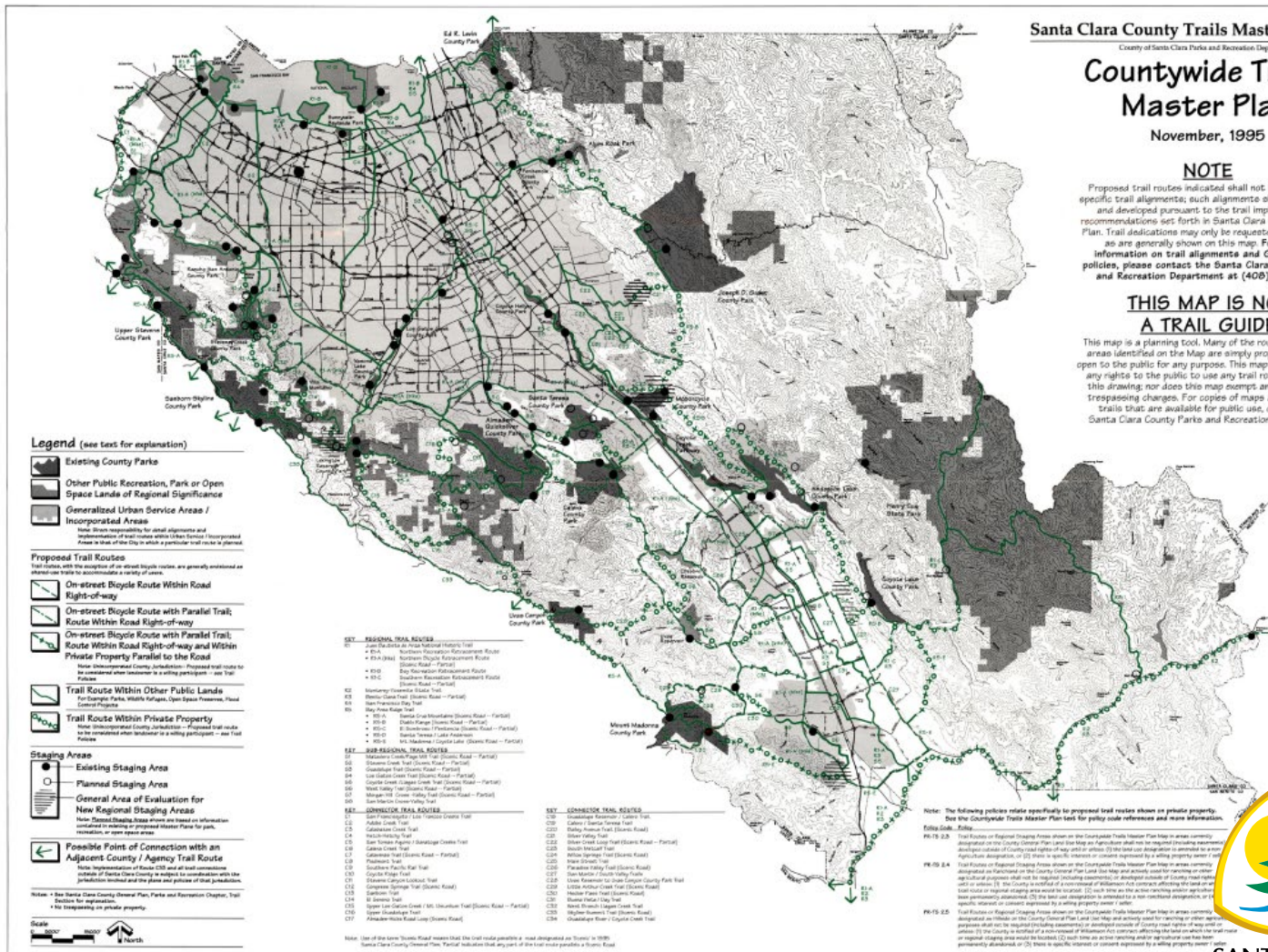
November, 1995

#### NOTE

Proposed trail routes indicated shall not be considered specific trail alignments; such alignments shall be obtained and developed pursuant to the trail implementation recommendations set forth in Santa Clara County General Plan. Trail dedications may only be requested along routes as are generally shown on this map. For further information on trail alignments and General Plan policies, please contact the Santa Clara County Parks and Recreation Department at (408) 358-3147.

#### THIS MAP IS NOT A TRAIL GUIDE

This map is a planning tool. Many of the routes or staging areas identified on the Map are simply proposed and not open to the public for any purpose. This map does not convey any rights to the public to use any trail routes shown on this drawing, nor does this map exempt any person from trespassing charges. For copies of maps about existing trails that are available for public use, contact the Santa Clara County Parks and Recreation Department.



#### Legend (see text for explanation)

- Existing County Parks
- Other Public Recreation, Park or Open Space Lands of Regional Significance
- Generalized Urban Service Area / Incorporated Areas
- Proposed Trail Routes
- On-street Bicycle Route Within Road Right-of-way
- On-street Bicycle Route with Parallel Trail; Route Within Road Right-of-way
- On-street Bicycle Route with Parallel Trail; Route Within Private Property
- Trail Route Within Other Public Lands
- Trail Route Within Private Property
- Staging Area
- Existing Staging Area
- Planned Staging Area
- General Area of Evaluation for New Regional Staging Areas
- Possible Points of Connection with an Adjacent County / Agency Trail Route

- REG. REGIONAL TRAIL ROUTES**
- R1 - San Antonio Valley Trail
- R2 - San Jose Valley Trail
- R3 - San Ramon Valley Trail
- R4 - Santa Clara Valley Trail
- R5 - San Gabriel Valley Trail
- R6 - San Antonio Valley Trail
- R7 - San Jose Valley Trail
- R8 - San Ramon Valley Trail
- R9 - Santa Clara Valley Trail
- R10 - San Gabriel Valley Trail
- R11 - San Antonio Valley Trail
- R12 - San Jose Valley Trail
- R13 - San Ramon Valley Trail
- R14 - Santa Clara Valley Trail
- R15 - San Gabriel Valley Trail
- R16 - San Antonio Valley Trail
- R17 - San Jose Valley Trail
- R18 - San Ramon Valley Trail
- R19 - Santa Clara Valley Trail
- R20 - San Gabriel Valley Trail
- R21 - San Antonio Valley Trail
- R22 - San Jose Valley Trail
- R23 - San Ramon Valley Trail
- R24 - Santa Clara Valley Trail
- R25 - San Gabriel Valley Trail
- R26 - San Antonio Valley Trail
- R27 - San Jose Valley Trail
- R28 - San Ramon Valley Trail
- R29 - Santa Clara Valley Trail
- R30 - San Gabriel Valley Trail
- R31 - San Antonio Valley Trail
- R32 - San Jose Valley Trail
- R33 - San Ramon Valley Trail
- R34 - Santa Clara Valley Trail
- R35 - San Gabriel Valley Trail
- R36 - San Antonio Valley Trail
- R37 - San Jose Valley Trail
- R38 - San Ramon Valley Trail
- R39 - Santa Clara Valley Trail
- R40 - San Gabriel Valley Trail
- R41 - San Antonio Valley Trail
- R42 - San Jose Valley Trail
- R43 - San Ramon Valley Trail
- R44 - Santa Clara Valley Trail
- R45 - San Gabriel Valley Trail
- R46 - San Antonio Valley Trail
- R47 - San Jose Valley Trail
- R48 - San Ramon Valley Trail
- R49 - Santa Clara Valley Trail
- R50 - San Gabriel Valley Trail
- R51 - San Antonio Valley Trail
- R52 - San Jose Valley Trail
- R53 - San Ramon Valley Trail
- R54 - Santa Clara Valley Trail
- R55 - San Gabriel Valley Trail
- R56 - San Antonio Valley Trail
- R57 - San Jose Valley Trail
- R58 - San Ramon Valley Trail
- R59 - Santa Clara Valley Trail
- R60 - San Gabriel Valley Trail
- R61 - San Antonio Valley Trail
- R62 - San Jose Valley Trail
- R63 - San Ramon Valley Trail
- R64 - Santa Clara Valley Trail
- R65 - San Gabriel Valley Trail
- R66 - San Antonio Valley Trail
- R67 - San Jose Valley Trail
- R68 - San Ramon Valley Trail
- R69 - Santa Clara Valley Trail
- R70 - San Gabriel Valley Trail
- R71 - San Antonio Valley Trail
- R72 - San Jose Valley Trail
- R73 - San Ramon Valley Trail
- R74 - Santa Clara Valley Trail
- R75 - San Gabriel Valley Trail
- R76 - San Antonio Valley Trail
- R77 - San Jose Valley Trail
- R78 - San Ramon Valley Trail
- R79 - Santa Clara Valley Trail
- R80 - San Gabriel Valley Trail
- R81 - San Antonio Valley Trail
- R82 - San Jose Valley Trail
- R83 - San Ramon Valley Trail
- R84 - Santa Clara Valley Trail
- R85 - San Gabriel Valley Trail
- R86 - San Antonio Valley Trail
- R87 - San Jose Valley Trail
- R88 - San Ramon Valley Trail
- R89 - Santa Clara Valley Trail
- R90 - San Gabriel Valley Trail
- R91 - San Antonio Valley Trail
- R92 - San Jose Valley Trail
- R93 - San Ramon Valley Trail
- R94 - Santa Clara Valley Trail
- R95 - San Gabriel Valley Trail
- R96 - San Antonio Valley Trail
- R97 - San Jose Valley Trail
- R98 - San Ramon Valley Trail
- R99 - Santa Clara Valley Trail
- R100 - San Gabriel Valley Trail



SANTA CLARA COUNTY PARKS

# CWTMP Trail Information

- General descriptions and goals for each route
- Intended uses
- Priority rating

TABLE D-1: SUMMARY OF COUNTY-WIDE TRAIL ROUTES

MAP KEY	TRAIL	GENERAL ROUTE	LOCATION	APPX. LENGTH (miles)	LEAD AGENCIES	EXISTING STATUS*		INTENDED TRAIL USES				
						Completed	Partially Completed	Hiking	Bicycling (On-Road)	Bicycling (Off-Road)	Equestrian	Priority Ranking

## REGIONAL TRAILS

### Juan Bautista de Anza National Historic Trail --Northern Recreation Retracement Route (north to south)

R1-A	Juan Bautista de Anza NHT - see also San Francisquito /Los Trancos Creek Connector Trail (Route C1)	Arastradero Rd.	From: Alpine Rd. To: Arastradero Preserve	0.5	Palo Alto									
R1-A	Juan Bautista de Anza NHT - see also Matadero Creek Sub-regional Trail (Route S1)	Arastradero Rd.	From: Arastradero Preserve To: Arastradero Preserve	1.0	Palo Alto	☐								
R1-A	Juan Bautista de Anza NHT		From: Arastradero Preserve To: Duveneck-Windmill Pasture	3.0	Los Altos Hills									
R1-A	Juan Bautista de Anza NHT	Rancho San Antonio OSP	From: Duveneck Windmill OSP To: Rancho San Antonio OSP	3.5	MROSD	☐								
R1-A	Juan Bautista de Anza NHT		From: Rancho San Antonio OSP To: Rancho San Antonio County Park	2.25	MROSD Santa Clara County	☐								
R1-A	Juan Bautista de Anza NHT - see also Stevens Creek Sub-regional Trail (Route S2)		From: Foothill Exp. To: Cristo Rey	1.0	Los Altos Cupertino Santa Clara County									
R1-A	Juan Bautista de Anza NHT - see also Stevens Creek Sub-regional Trail (Route S2)		From: Cristo Rey / Rancho San Antonio Co. Park To: Stevens Creek Blvd.	1.0	Cupertino Santa Clara County									38
R1-A	Juan Bautista de Anza NHT - see also Stevens Creek Sub-regional Trail (Route S2)		From: Stevens Creek Blvd. To: Stevens Canyon Road / Stevens Creek Co. Park	2.5	Cupertino Santa Clara County									38

Nine Sub-regional trail routes are shown in the Trails Master Plan Map. These are:

- | Map Key | Trail Route  |
|---------|--|
| S1      | <b>Matadero Creek/Page Mill Trail:</b> passing through Palo Alto, Los Altos Hills, and Stanford University from the Bay Trail (R4) to the Bay Area Ridge Trail (R5-A)  |
| S2      | <b>Stevens Creek Trail:</b> crossing the cities of Mountain View, Sunnyvale, Los Altos, and Cupertino linking the San Francisco Bay Trail (R4) with the Bay Area Ridge Trail (R5-A).   |
| S3      | <b>Guadalupe Trail:</b> routed in a north-south direction from the Bay Trail (R4) in San Jose, to Guadalupe Reservoir.   |
| S4      | <b>Los Gatos Creek Trail:</b> from its confluence in San Jose at the Guadalupe/Santa Teresa trail upstream through Campbell and Los Gatos to the Bay Area Ridge Trail (R5-A) at Lexington Reservoir.                           |
| S5      | <b>Coyote Creek /Llagas Creek Trail:</b> from the Alameda County Line and the Bay Trail (R4) to the San Benito County Line and the Monterey-Yosemite Trail (R2).   |
| S6      | <b>West Valley Trail:</b> from Almaden Lake Park to the southern county link of the Bay Area Ridge Trail (R5-E) (Alternative Highway 152 alignment)  |
| S7      | <b>Morgan Hill Cross -Valley Trail:</b> an east-west route from the West Valley Sub-regional Trail (S6) to Lake Anderson County Park .   |
| S8      | <b>San Martin Cross-Valley Trail:</b> an east-west route from the West Valley Sub-regional Trail (S6), crossing the Juan Bautista de Anza National Historic Trail (R1-A) to the Bay Area Ridge Trail (R5-B) near Coyote Creek. |





# Regional Staging Areas



SANTA CLARA COUNTY PARKS

# Countywide Trails Master Plan Map Update Project



SANTA CLARA  
COUNTY PARKS



# Countywide Trails Master Plan

November, 1995

## NOTE

Proposed trail routes indicated shall not be considered specific trail alignments; such alignments shall be obtained and developed pursuant to the trail implementation recommendations set forth in Santa Clara County General Plan. Trail dedications may only be requested along routes as are generally shown on this map. For further information on trail alignments and General Plan policies, please contact the Santa Clara County Parks and Recreation Department at (408) 358-3147.

## THIS MAP IS NOT A TRAIL GUIDE

This map is a planning tool. Many of the routes or staging areas identified on the Map are simply proposed and not open to the public for any purpose. This map does not convey any rights to the public to use any trail routes shown on this drawing; nor does this map exempt any person from trespassing charges. For copies of maps about existing trails that are available for public use, contact the Santa Clara County Parks and Recreation Department.

### Legend (see text for explanation)

- Existing County Parks
- Other Public Recreation, Park or Open Space Lands of Regional Significance
- Generalized Urban Service Areas / Incorporated Areas

Note: Brown responsibility for detail alignments and implementation of trail routes within Urban Service Incorporated Areas is that of the City in which a particular trail route is planned.

### Proposed Trail Routes

Trail routes, with the exception of on-street bicycle routes, are generally envisioned as shared-use trails to accommodate a variety of users.

- On-street Bicycle Route Within Road Right-of-way
- On-street Bicycle Route with Parallel Trail; Route Within Road Right-of-way
- On-street Bicycle Route with Parallel Trail; Route Within Road Right-of-way and Within Private Property Parallel to the Road
- Trail Route Within Other Public Lands  
For example: Parks, Wildlife Refuges, Open Space Reserves, Flood Control Projects
- Trail Route Within Private Property  
Note: Unincorporated County Jurisdiction - Proposed trail route to be considered when landowner is a willing participant - see Trail Policies

- Trail Route Within Other Public Lands  
For example: Parks, Wildlife Refuges, Open Space Reserves, Flood Control Projects
- Trail Route Within Private Property  
Note: Unincorporated County Jurisdiction - Proposed trail route to be considered when landowner is a willing participant - see Trail Policies

### Staging Areas

- Existing Staging Area
- Planned Staging Area
- General Area of Evaluation for New Regional Staging Areas  
Note: Planned Staging Areas shown are based on information contained in existing or proposed Master Plans for parks, recreation, or open space areas.
- Possible Point of Connection with an Adjacent County / Agency Trail Route  
Note: Implementation of these trails and all trail connections outside of Santa Clara County is subject to coordination with the jurisdiction involved and the plans and policies of that jurisdiction.

Notes: • See Santa Clara County General Plan, Parks and Recreation Chapter, Trail Section for explanation.  
• No trespassing on private property.



- KEY REGIONAL TRAIL ROUTES**
  - R1-1 Juan Bautista Area National Historic Trail
  - R1-2 Northern Recreation Enhancement Route
  - R1-3A (Partial) Northern Diagonal Enhancement Route
  - R1-3B (Partial) Northern Diagonal Enhancement Route
  - R1-4 Bay Area Recreation Enhancement Route
  - R1-5 Southern Recreation Enhancement Route
  - R1-6 San Francisco Bay Trail
  - R1-7 San Francisco Bay Trail
  - R1-8 San Francisco Bay Trail
  - R1-9 San Francisco Bay Trail
  - R1-10 San Francisco Bay Trail
  - R1-11 San Francisco Bay Trail
  - R1-12 San Francisco Bay Trail
  - R1-13 San Francisco Bay Trail
  - R1-14 San Francisco Bay Trail
  - R1-15 San Francisco Bay Trail
  - R1-16 San Francisco Bay Trail
  - R1-17 San Francisco Bay Trail
  - R1-18 San Francisco Bay Trail
  - R1-19 San Francisco Bay Trail
  - R1-20 San Francisco Bay Trail
  - R1-21 San Francisco Bay Trail
  - R1-22 San Francisco Bay Trail
  - R1-23 San Francisco Bay Trail
  - R1-24 San Francisco Bay Trail
  - R1-25 San Francisco Bay Trail
  - R1-26 San Francisco Bay Trail
  - R1-27 San Francisco Bay Trail
  - R1-28 San Francisco Bay Trail
  - R1-29 San Francisco Bay Trail
  - R1-30 San Francisco Bay Trail
  - R1-31 San Francisco Bay Trail
  - R1-32 San Francisco Bay Trail
  - R1-33 San Francisco Bay Trail
  - R1-34 San Francisco Bay Trail
  - R1-35 San Francisco Bay Trail
  - R1-36 San Francisco Bay Trail
  - R1-37 San Francisco Bay Trail
  - R1-38 San Francisco Bay Trail
  - R1-39 San Francisco Bay Trail
  - R1-40 San Francisco Bay Trail
  - R1-41 San Francisco Bay Trail
  - R1-42 San Francisco Bay Trail
  - R1-43 San Francisco Bay Trail
  - R1-44 San Francisco Bay Trail
  - R1-45 San Francisco Bay Trail
  - R1-46 San Francisco Bay Trail
  - R1-47 San Francisco Bay Trail
  - R1-48 San Francisco Bay Trail
  - R1-49 San Francisco Bay Trail
  - R1-50 San Francisco Bay Trail
- KEY SUB-REGIONAL TRAIL ROUTES**
  - S1-1 Matadero Creek/Palo Alto Trail (Santa Clara - Partial)
  - S1-2 Matadero Creek Trail (Santa Clara - Partial)
  - S1-3 Guadalupe Trail (Santa Clara - Partial)
  - S1-4 Los Gatos Creek Trail (Santa Clara - Partial)
  - S1-5 Coyote Creek / Lugo Creek Trail (Santa Clara - Partial)
  - S1-6 West Valley Trail (Santa Clara - Partial)
  - S1-7 Morgan Hill / Coyote Valley Trail (Santa Clara - Partial)
  - S1-8 San Martin / Coyote Valley Trail
- KEY CONNECTOR TRAIL ROUTES**
  - C1-1 San Francisco / Los Gatos / Santa Clara Trail
  - C1-2 San Francisco / Los Gatos / Santa Clara Trail
  - C1-3 San Francisco / Los Gatos / Santa Clara Trail
  - C1-4 San Francisco / Los Gatos / Santa Clara Trail
  - C1-5 San Francisco / Los Gatos / Santa Clara Trail
  - C1-6 San Francisco / Los Gatos / Santa Clara Trail
  - C1-7 San Francisco / Los Gatos / Santa Clara Trail
  - C1-8 San Francisco / Los Gatos / Santa Clara Trail
  - C1-9 San Francisco / Los Gatos / Santa Clara Trail
  - C1-10 San Francisco / Los Gatos / Santa Clara Trail
  - C1-11 San Francisco / Los Gatos / Santa Clara Trail
  - C1-12 San Francisco / Los Gatos / Santa Clara Trail
  - C1-13 San Francisco / Los Gatos / Santa Clara Trail
  - C1-14 San Francisco / Los Gatos / Santa Clara Trail
  - C1-15 San Francisco / Los Gatos / Santa Clara Trail
  - C1-16 San Francisco / Los Gatos / Santa Clara Trail
  - C1-17 San Francisco / Los Gatos / Santa Clara Trail
  - C1-18 San Francisco / Los Gatos / Santa Clara Trail
  - C1-19 San Francisco / Los Gatos / Santa Clara Trail
  - C1-20 San Francisco / Los Gatos / Santa Clara Trail
  - C1-21 San Francisco / Los Gatos / Santa Clara Trail
  - C1-22 San Francisco / Los Gatos / Santa Clara Trail
  - C1-23 San Francisco / Los Gatos / Santa Clara Trail
  - C1-24 San Francisco / Los Gatos / Santa Clara Trail
  - C1-25 San Francisco / Los Gatos / Santa Clara Trail
  - C1-26 San Francisco / Los Gatos / Santa Clara Trail
  - C1-27 San Francisco / Los Gatos / Santa Clara Trail
  - C1-28 San Francisco / Los Gatos / Santa Clara Trail
  - C1-29 San Francisco / Los Gatos / Santa Clara Trail
  - C1-30 San Francisco / Los Gatos / Santa Clara Trail
  - C1-31 San Francisco / Los Gatos / Santa Clara Trail
  - C1-32 San Francisco / Los Gatos / Santa Clara Trail
  - C1-33 San Francisco / Los Gatos / Santa Clara Trail
  - C1-34 San Francisco / Los Gatos / Santa Clara Trail
  - C1-35 San Francisco / Los Gatos / Santa Clara Trail
  - C1-36 San Francisco / Los Gatos / Santa Clara Trail
  - C1-37 San Francisco / Los Gatos / Santa Clara Trail
  - C1-38 San Francisco / Los Gatos / Santa Clara Trail
  - C1-39 San Francisco / Los Gatos / Santa Clara Trail
  - C1-40 San Francisco / Los Gatos / Santa Clara Trail
  - C1-41 San Francisco / Los Gatos / Santa Clara Trail
  - C1-42 San Francisco / Los Gatos / Santa Clara Trail
  - C1-43 San Francisco / Los Gatos / Santa Clara Trail
  - C1-44 San Francisco / Los Gatos / Santa Clara Trail
  - C1-45 San Francisco / Los Gatos / Santa Clara Trail
  - C1-46 San Francisco / Los Gatos / Santa Clara Trail
  - C1-47 San Francisco / Los Gatos / Santa Clara Trail
  - C1-48 San Francisco / Los Gatos / Santa Clara Trail
  - C1-49 San Francisco / Los Gatos / Santa Clara Trail
  - C1-50 San Francisco / Los Gatos / Santa Clara Trail

Note: Use of the term "Trail Route" means that the trail route is a trail route as defined in the Santa Clara County General Plan. Partial indicates that a portion of the trail route is located in another County.

- Note: The following policies relate specifically to proposed trail routes shown on private property. See the Countywide Trails Master Plan text for policy code references and more information.
- Policy Code - Policy**
- TR-15-2.3: Trail Routes or Regional Staging Areas shown on the Countywide Trails Master Plan Map in areas currently designated on the County General Plan Land Use Map as Agriculture shall not be required (including easement) or developed outside of County road rights of way, and/or unless (1) the land use designation is amended to a non-Agriculture designation, or (2) there is specific consent or consent expressed by a willing property owner's letter.
  - TR-15-2.4: Trail Routes or Regional Staging Areas shown on the Countywide Trails Master Plan Map in areas currently designated as Ranchland on the County General Plan Land Use Map and actively used for ranching or other agricultural purposes shall not be required (including easement) or developed outside of County road rights of way, and/or unless (1) the County is notified of a non-renewal of Williamson Act contract affecting the land on which the trail route or regional staging area would be located, (2) such time as the active ranching and/or agricultural use has been permanently abandoned, (3) the land use designation is amended to a non-ranchland designation, or (4) there is specific consent or consent expressed by a willing property owner's letter.
  - TR-15-2.5: Trail Routes or Regional Staging Areas shown on the Countywide Trails Master Plan Map in areas currently designated as Urban on the County General Plan Land Use Map and actively used for ranching or other agricultural purposes shall not be required (including easement) or developed outside of County road rights of way, and/or unless (1) the County is notified of a non-renewal of Williamson Act contract affecting the land on which the trail route or regional staging area would be located, (2) such time as the active ranching and/or agricultural use has been permanently abandoned, or (3) there is specific consent or consent expressed by a willing property owner's letter.



SANTA CLARA COUNTY PARKS

# Project Scope

Update  
CWTMP Map

Consider  
adding new  
trails

Reprioritize  
trails

Consider  
staging areas

Minor refresh  
for graphics,  
formatting, etc.

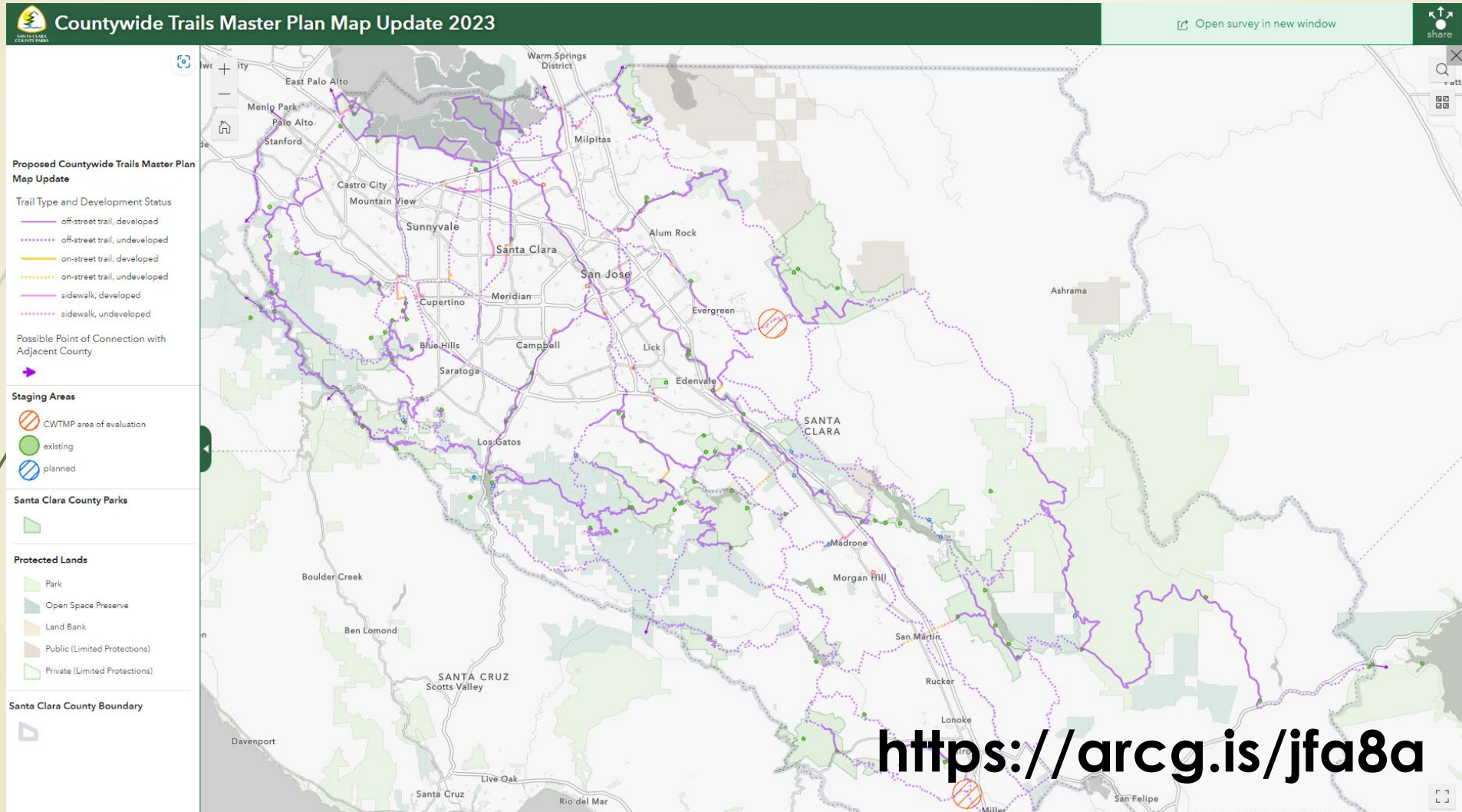




# Project Timeline



# Draft Map





# Proposed Map Changes

Active  
Transportation  
Integration

Trail Updates  
Consistent with  
Current  
Planning

Inclusion of  
Additional Trails  
in CWTMP

Regional  
Staging Area  
Modifications



# Active Transportation Integration

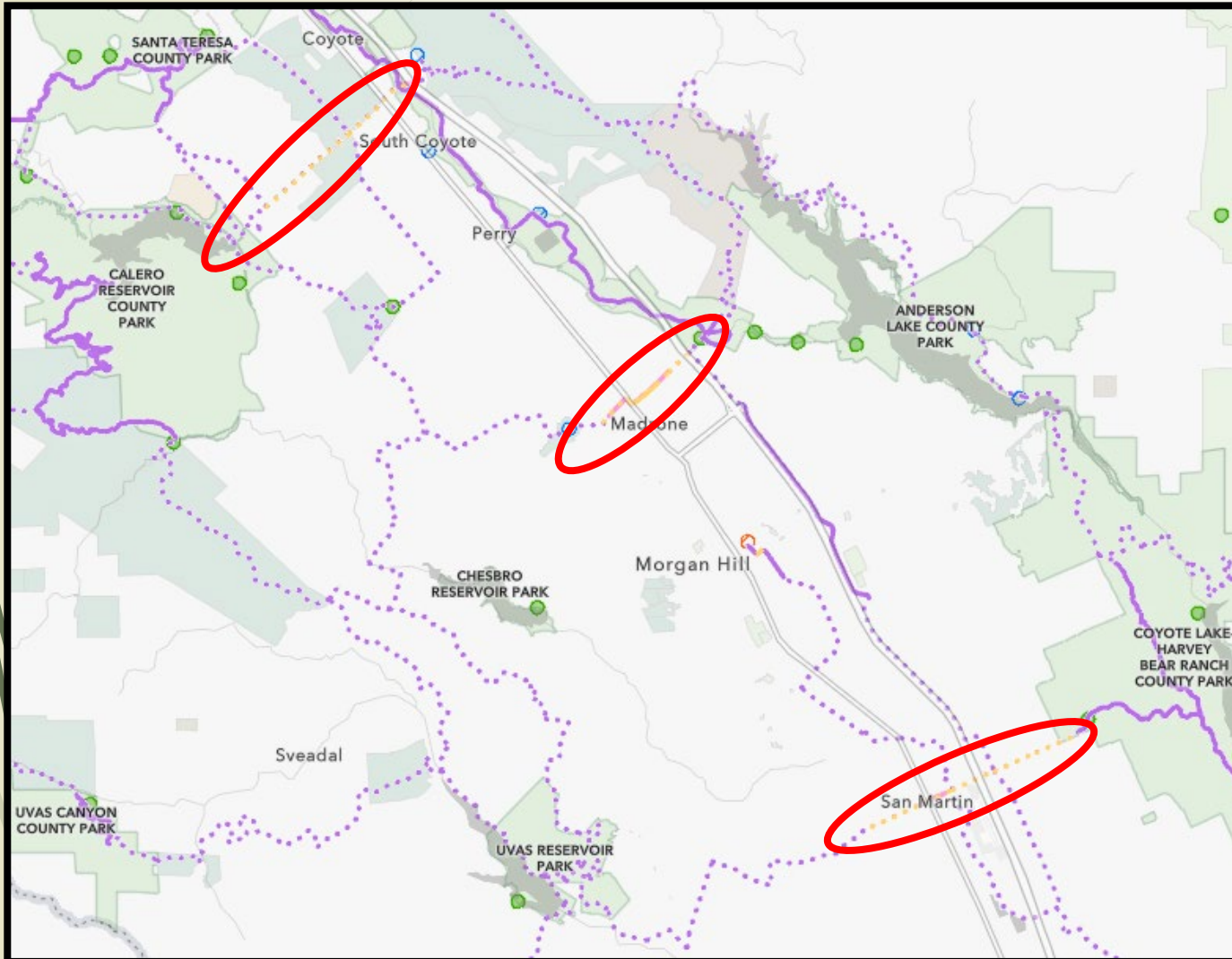
Better integrate CWTMP with countywide active transportation planning

Shift on-street bikeway determination to transportation agencies



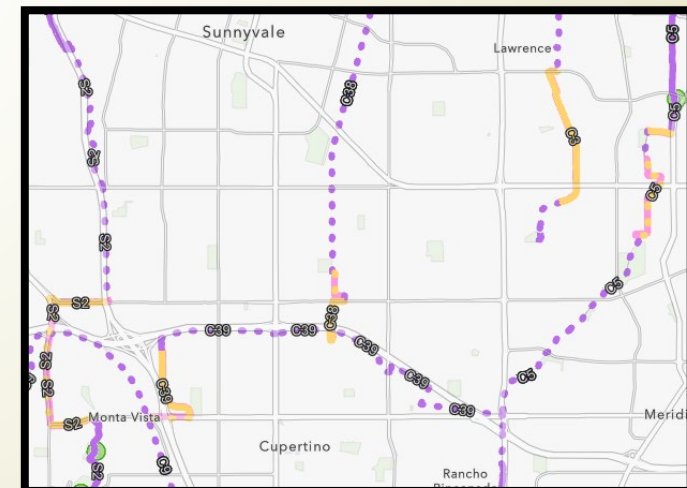


# Active Transportation Overlap



## CWTMP Map continues to include:

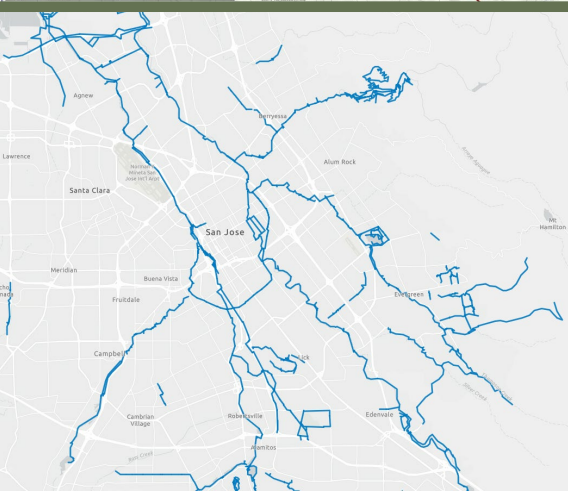
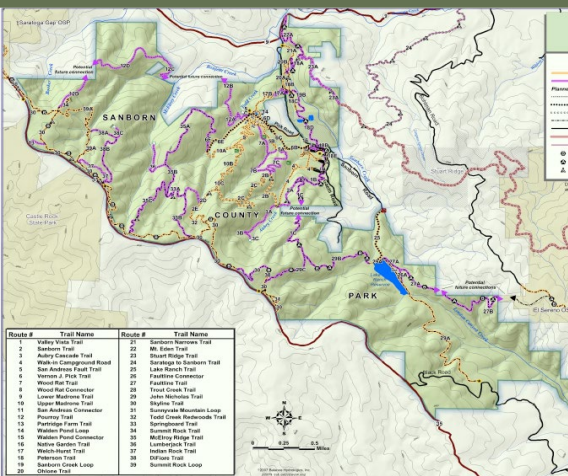
- VTA Bicycle Superhighway / CWTMP off-street trail overlap (e.g., Coyote Creek Trail)
- On-street connections necessary to link regional parks and open spaces in South County
- On-street connections that close short gaps in off-street trails



# Trail Updates & Realignmentments

## Examples

- Built trails since 1995
- City updates
- Trail plans
- New public lands
- Partnership opportunities

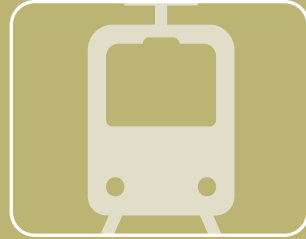




# Proposed Additions to CWTMP

Map Key	Trail Name	Proposed Intended Use	General Location
C35	Five Wounds Trail	Hiking/bicycling	San Jose
C36	Three Creeks Trail	Hiking/bicycling	San Jose
C37	Canoas Creek Trail	Hiking/bicycling	San Jose, Martial Cottle County Park
C38	East Channel Trail	Hiking/bicycling	Sunnyvale, Cupertino
C39	Cupertino I-280 Trail	Hiking/bicycling	Cupertino
C40	Stevens Creek-Arastradero Trail	Hiking/equestrian	Los Altos Hills, Stevens Creek County Park, Rancho San Antonio County Park & Open Space Preserve
C41	Mt. Eden Trail	Hiking/equestrian	Saratoga, Stevens Creek County Park
C42	Saratoga to Skyline Trail	Hiking/equestrian; portions hiking/bicycling/equestrian	Saratoga, Sanborn County Park
C43	Coyote Valley Trail	Hiking/bicycling/equestrian	Coyote Valley, Santa Teresa County Park, Tilton Open Space Reserve
C44	Gilroy Gardens Trail	Hiking/bicycling/equestrian	Gilroy
C45	Diablo Range Trail	Hiking/bicycling/equestrian	Eastern Santa Clara County, Joseph D. Grant County Park, Henry Coe State Park
C46	Loma Prieta Trail	Hiking/bicycling/equestrian	Rancho Canada del Oro Open Space Preserve, Sierra Azul Open Space Preserve
S9	Mt. Umunhum to the Sea Trail	Hiking/bicycling/equestrian	Sierra Azul Open Space Preserve, Santa Cruz County

# Regional Staging Area Modifications



11 light rail, train, and BART stations near trails (<0.1 mile) proposed as Areas of Evaluation for Regional Staging



Removal of 3 Areas of Evaluation now within parklands



Keep Gavilan College, Evergreen College Areas of Evaluation





# Trail Reprioritization

## Incorporated Areas

- Cities set priorities in their jurisdiction

## Unincorporated Areas

- Public feedback
- Countywide Trails Master Plan prioritization framework

# Countywide Trails Map Update: Cupertino

## Primary Trails

- Juan Bautista de Anza National Historic Trail (R1)
- Stevens Creek Trail (S2)
- Southern Pacific Rail Trail (C9)
- San Tomas Aquino Creek/Saratoga Creek Trail (C5)

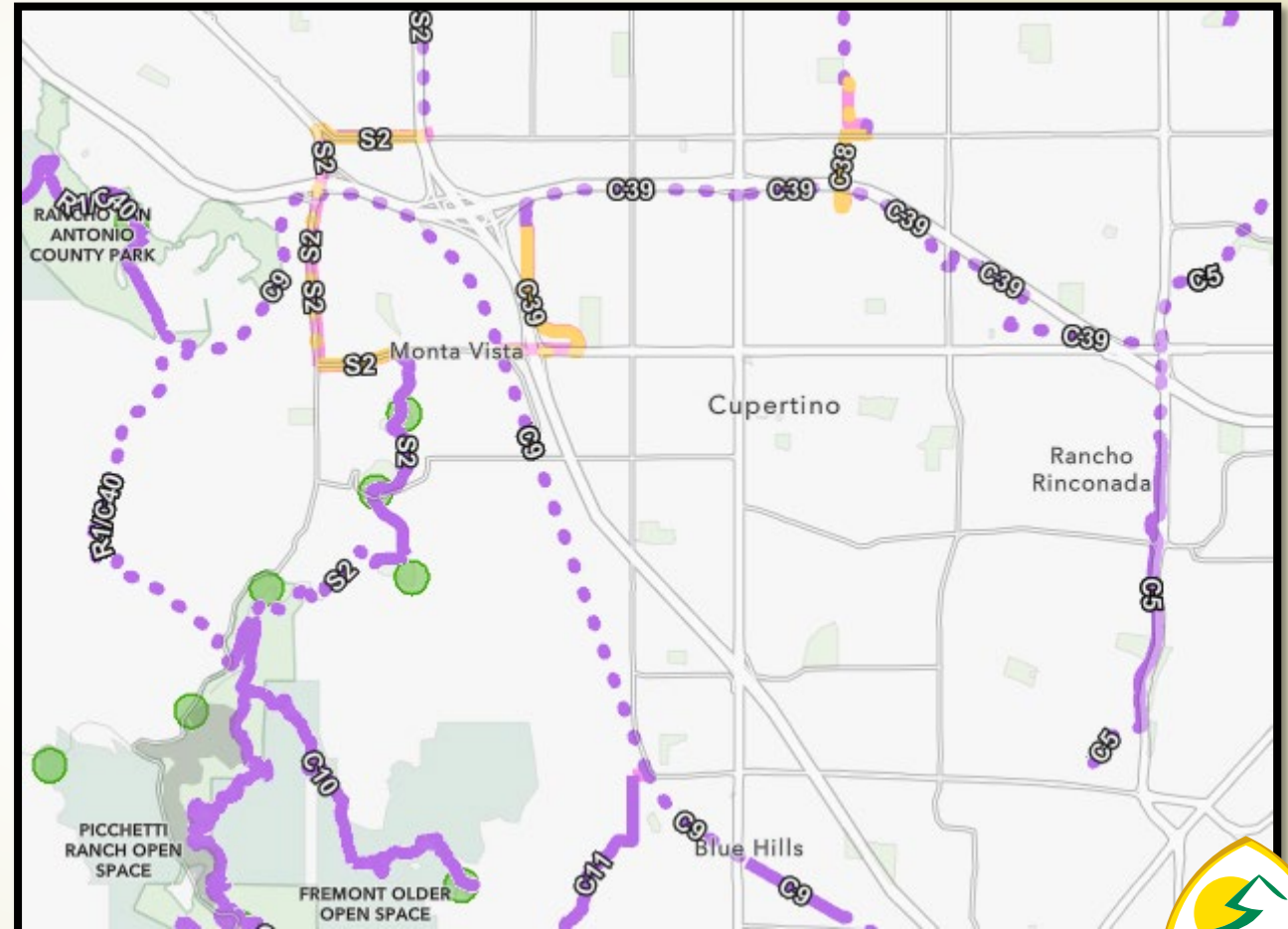
## Active Transportation Integration

- R1 bikeway removal

## Proposed additions of:

- **East Channel Trail (C38)**
- **Cupertino I-280 Trail (C39)**
- **Stevens Creek-Arastradero Trail (C40)**

Prioritization is City-determined





# Feedback Opportunities

Feedback today

Attend public meetings

- **Wednesday March 22, 6-8pm (in person)**
- **Wednesday March 29, 6-8pm (virtual)**
- *Check website to verify dates and locations*

Other City presentations & County PRC meeting

- *Check website for full schedule*

Explore the draft map and provide input by **April 30, 2023**

# Public Feedback Tool

Project Information

**Countywide Trails Master Plan Map Update 2023**

Open survey in new window

share

About Survey **FAQ**

The purpose of the survey is to gather public input on the County's proposed update to the Countywide Trails Master Plan Map. Please share your thoughts below on proposed conceptual changes and trail prioritization. You will also be able to provide location-specific feedback as part of the survey.

Questions? Learn more about the Map Update in the About or FAQ tabs or visit the project [website](#).

Envíe un correo electrónico a [parkinfo@prk.sccgov.org](mailto:parkinfo@prk.sccgov.org) para documentos o servicios de traducción de reuniones.  
 Gửi email đến [parkinfo@prk.sccgov.org](mailto:parkinfo@prk.sccgov.org) để nhận các dịch vụ thông dịch tài liệu hoặc cuộc họp.  
 如需文件或会议翻译服务, 请发送电子邮件至 [parkinfo@prk.sccgov.org](mailto:parkinfo@prk.sccgov.org)

**I. Input on Proposed Changes**

1. Do you agree with the following conceptual [changes](#) to the Countywide Trails Master Plan Map?

a. Increase Countywide Trails Master Plan (CWTMP) focus on off-street trails, both paved and unpaved\*

Strongly Agree Agree Neutral Disagree Strongly Disagree

b. Better integrate CWTMP with countywide active transportation planning by shifting on-street bikeway determination to transportation agencies\*

Strongly Agree Agree Neutral Disagree Strongly Disagree

c. Keep on-street connections and open spaces across south...

Strongly Agree Agree Neutral Disagree Strongly Disagree

**Interactive Draft Map**

**Public Input Survey**



Explore the Draft Map  
and Provide Input!



<https://arcg.is/jfa8a>

Questions & Mailing List

Rebecca Coates-Maldoon

Countywide Trails Program Manager

[rebecca.coates-maldo@prk.sccgov.org](mailto:rebecca.coates-maldo@prk.sccgov.org)

Project Information &  
Public Meeting Schedule

[https://parks.sccgov.org/  
countywide-trails-master-  
plan-map-update-project](https://parks.sccgov.org/countywide-trails-master-plan-map-update-project)

Comments Due April 30th

