

Bicycle Pedestrian Commission
Agenda Item #4
October 19, 2022

Bicycle Pedestrian Commission



CUPERTINO

October 19, 2022

Bicycle Pedestrian Commission

Bicycle Pedestrian Commission Website



CUPERTINO

October 19, 2022

BPC Webpage (1 of 2)

[Our City](#) » [Commissions](#) »

BICYCLE PEDESTRIAN COMMISSION

Font Size:    [Share & Bookmark](#)  [Feedback](#)  [Print](#)

The function of the Bicycle Pedestrian Commission is to review, monitor and make recommendations regarding City transportation matters including but not limited to bicycle and pedestrian traffic, parking, education and recreation within Cupertino (also see Municipal Code [2.92.080](#) Powers and Functions). In July 2015 the Commission voted unanimously to establish a mission statement including measurable objectives to be achieved by the end of 2025. This will guide the Commission's priorities and will be central to defining the upcoming 2016 Bicycle plan.

The objectives are as follows:

- Be one of the top 5 cities in California for biking and walking and achieve Gold status from the League of American Bicyclists.
- Expand middle and high school student bicycle and pedestrian trips to 40% of total school commutes.
- Expand intra-city trips for errands and leisure by adults and seniors via bicycle/walking to 20% of trips.
- Expand resident bicycle/pedestrian commuting to major Cupertino employers and De Anza College to 15% of total trips.

STAFF CONTACT

David Stillman

Transportation Manager

Phone: 408.777.3249

Fax: 408.777.3333

davids@cupertino.org

[Online Commission Application](#)

[Agenda and Minutes](#)

[Current Commission Vacancies](#)

BPC Webpage (2 of 2)

[City Work Program](#)

The Commission consists of five members appointed by the City Council to four-year overlapping terms. None shall be officials or employees of the City nor cohabit with, as defined by law, nor be related by blood or marriage to, any member of the committee, the City Manager or the staff person or persons assigned to the Commission. All members are City of Cupertino residents.

Meetings are held on the third Wednesday of the every month at 7 p.m. in City Hall, Conference Room C. For more information, call staff liaison David Stillman at 408.777.3249.

If you wish to send an e-mail to the Bicycle Pedestrian Commission, please use the following email address:
bikepedcommission@cupertino.org

Commissioners



Gerhard Eschelbeck

Second term ending 1/30/23

geschelbeck@cupertino.org

[Biography](#)

BPC Webpage

- BPC Discussion 9-21-22
- Recommendation:
 - Subcommittee to suggest more measurable objectives
 - Update commissioner profiles

Bicycle Pedestrian Commission

Bicycle Pedestrian Commission Website

End Slide



CUPERTINO

October 19, 2022


Bike / Ped Commission

Pilot: Adaptive Traffic
October 19, 2022



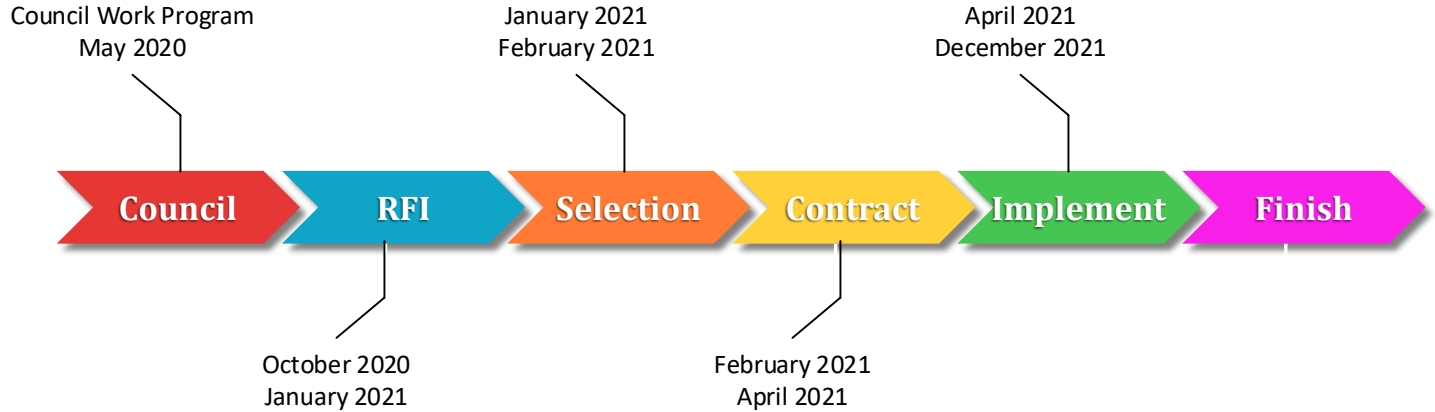
Pilot: Adaptive Traffic

Agenda

- 
- Project Timeline
 - CUBIC | Trafficware
 - Scope of Work
 - Results
 - Questions

Pilot: Adaptive Traffic

Project Timeline



Pilot: Adaptive Traffic

CUBIC | Trafficware

- Specialize in Transportation Systems
- Trafficware Acquisition 2018
- 200 Professional Staff
- Heavy Presence in Western US
- Reference Cities: Trafficware SynchroGreen
 - Santa Clara County
 - Palo Alto
 - Lynnwood, WA

Pilot: Adaptive Traffic

Scope of Work

- Goal: Reduce Traffic Time and Delays
- Implement SynchroGreen & Gridsmart at 4 Intersections
 - DeAnza @ Mariani
 - DeAnza @ 280N
 - DeAnza @ 280S
 - DeAnza @ Homestead
- Field Investigation – Correct Deficiencies
- System Programming

Pilot: Adaptive Traffic

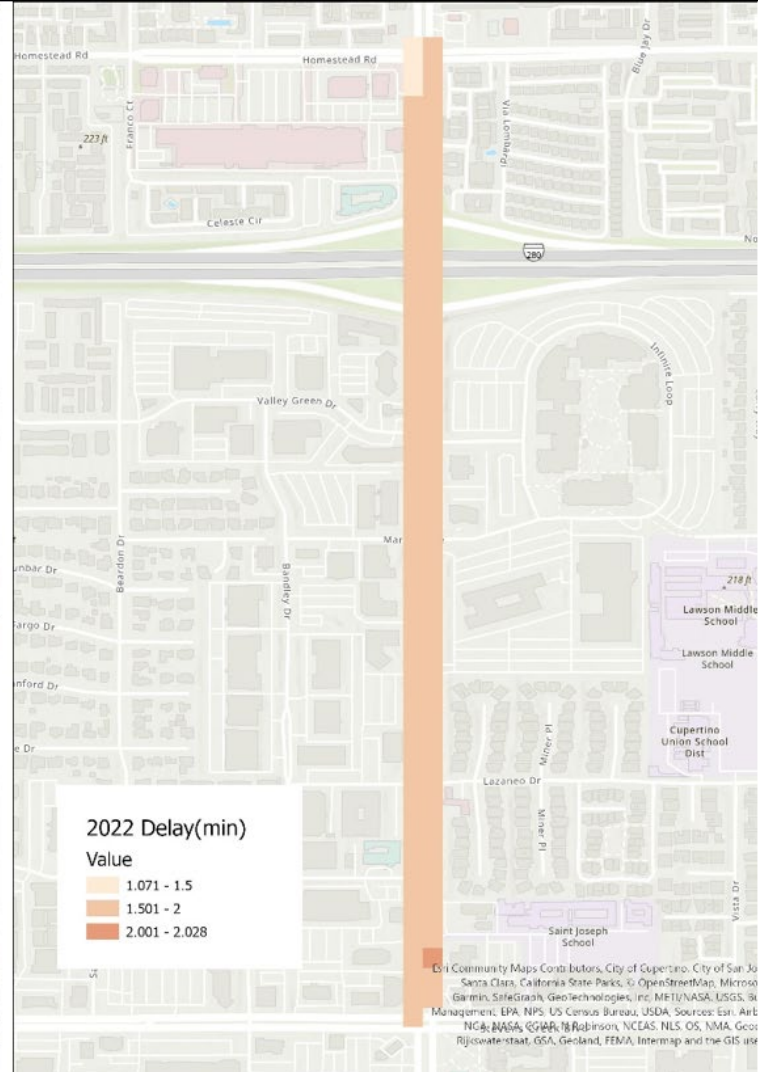
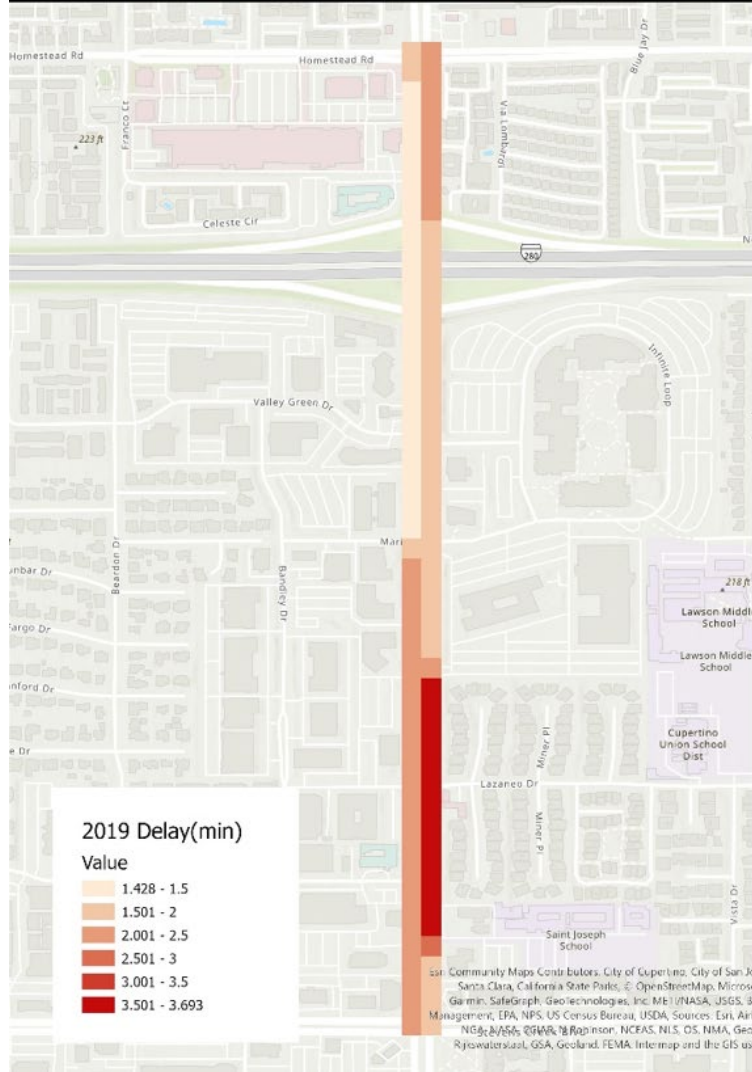
Scope of Work

- Field Installation
- System Activation, Testing, Adjustment, Acceptance
- Training
- Ongoing Support

Pilot: Adaptive Traffic

Results

- Enhanced Team Skillset
 - Implementation & Operation of Adaptive Traffic Technology
- Updated Traffic Infrastructure
 - Ethernet replaced Serial
 - Fiber versus Twisted Pair
 - Latest Generation of Controllers
- Average Traffic Delay Reduced by 3 Min?
 - COVID Pandemic Impact



Questions

ANY
QUESTIONS?



Bicycle Pedestrian Commission
Agenda Item #5b
October 19, 2022

Bicycle Pedestrian Commission



CUPERTINO

October 19, 2022

Bicycle Pedestrian Commission

Multi-Modal Traffic Counting



CUPERTINO

October 19, 2022

Multi-modal Traffic Count - Gridsmart

- Video detection at each intersection
- One or two cameras per intersection
- Zones defined to identify bikes, vehicles and pedestrians for signal detection and counting

Multi-modal Traffic Count - Gridsmart



Report Type

Ped Crosswalk Count

Aggregation

None

Interval

1 Hour

Dates

October - 2022

Sun	Mon	Tue	Wed	Thu	Fri	Sat
25	26	27	28	29	30	1
2	3	4	5	6	7	8
9	10	11	12	13	14	15
16	17	18	19	20	21	22
23	24	25	26	27	28	29
30	31	1	2	3	4	5

Download

Import

Time of Day

00:00 - 23:59

Multi-modal Traffic Count - Peds

Intersection N. De Anza Blvd & Mariani Ave

Date 10/17/2022

	North Crosswalk		South Crosswalk			West Crosswalk		
	Exit Point 2	Exit Point 3	Exit Point 1	Exit Point 2	Exit Point 3	Exit Point 1	Exit Point 2	Exit Point 3
07:00							1	
08:00			1			2	4	3
09:00			2	3	1		2	
10:00				1	1		1	
11:00			2	5		1		
12:00	1	1	6	25	2		3	
13:00			1	18				
14:00				3		1	3	
15:00			1	2			2	
16:00			2	4		2	2	1
17:00			3	6		4	5	1
18:00				3			7	
Total	1	1	18	70	4	10	30	5

Multi-modal Traffic Count - Bikes

GRIDSMART®

Intersection N. De Anza Blvd & Mariani Ave
Date 10/17/2022

	Right	Through	Left	UTurn	Total
Northbound	4	4	2		10
Eastbound	1	2	1		4
Southbound	1	9			10
Westbound		4			4
Unassigned					
Total	6	19	3		28

Bike Turning Movement Counts

	Northbound				Eastbound				Southbound				Westbound				Unassigned		
	R	T	L	U	R	T	L	U	R	T	L	U	R	T	L	R	T	L	
00:00																			
01:00																			
02:00																			
03:00																			
04:00																			
05:00																			
06:00																			
07:00																			
08:00			1	1		1					1								
09:00	1							1			1				1				
10:00										1					1				
11:00				1				1			1				1				
12:00			1																
13:00	2																		
14:00											3								
15:00	1									1									
16:00											1								
17:00			1																
18:00			1								2				1				
19:00																			
20:00																			
21:00																			
22:00																			
Total	4	4	2		1	2	1		1	9				4					

Multi-modal Traffic Count - Bikes

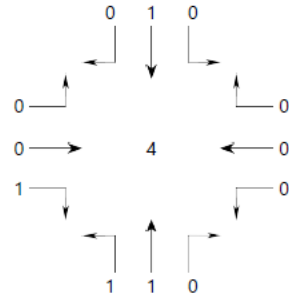
GRIDSMART[®]

Bike Turning Movement Counts

Intersection N. De Anza Blvd & Mariani Ave
Date 10/17/2022

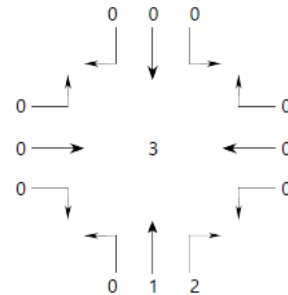
AM PEAK HOUR VOLUME (0:00-10:45)

FROM 08:00 TO 09:00



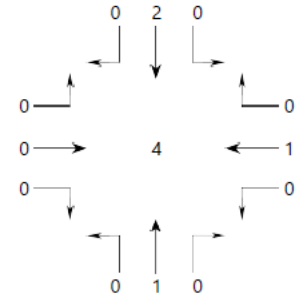
MID-DAY PEAK HOUR VOLUME (11:00-14:00)

FROM 12:15 TO 13:15



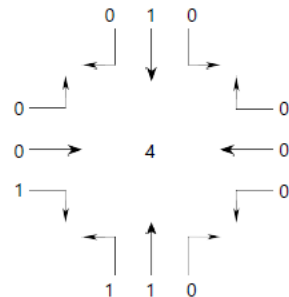
PM PEAK HOUR VOLUME (14:15-23:45)

FROM 17:45 TO 18:45



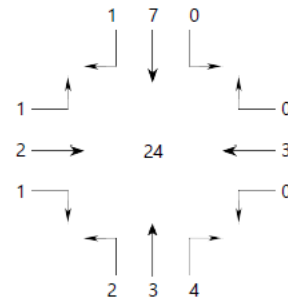
OVERALL PEAK HOUR VOLUME

FROM 08:00 TO 09:00



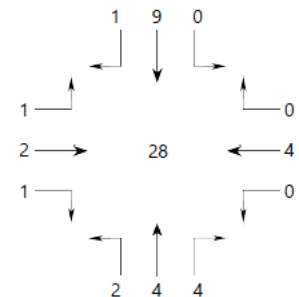
DAYTIME TOTAL VOLUME

FROM 07:00 TO 18:00



SELECTED TIME VOLUME

FROM 00:00 TO 23:59



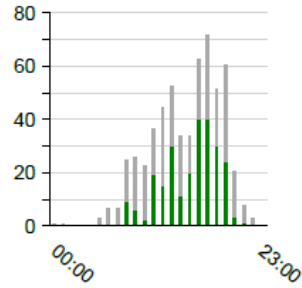
Multi-modal Traffic Count – Arrivals on Green

GRIDSMART

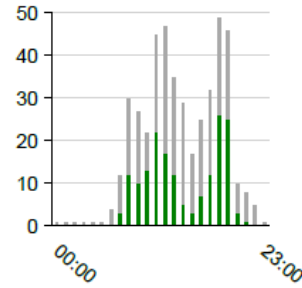
Intersection N. De Anza Blvd & Mariani Ave
Date 10/17/2022

Volume & Percent Arrivals on Green

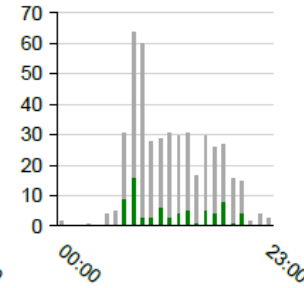
Phase 1



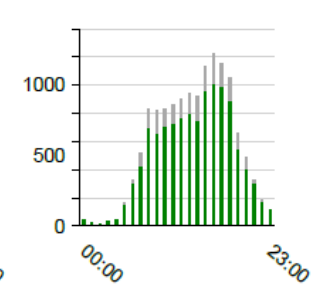
Phase 2



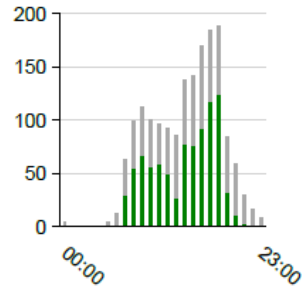
Phase 3



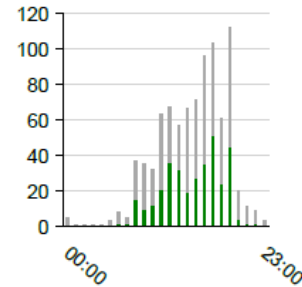
Phase 4



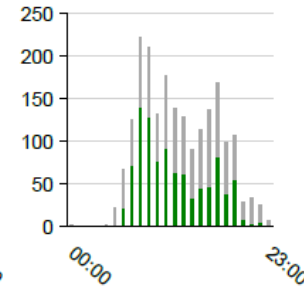
Phase 5



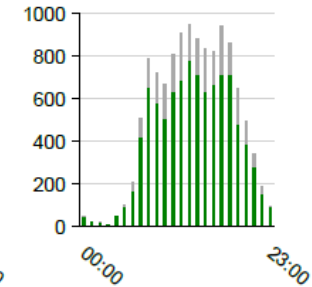
Phase 6



Phase 7

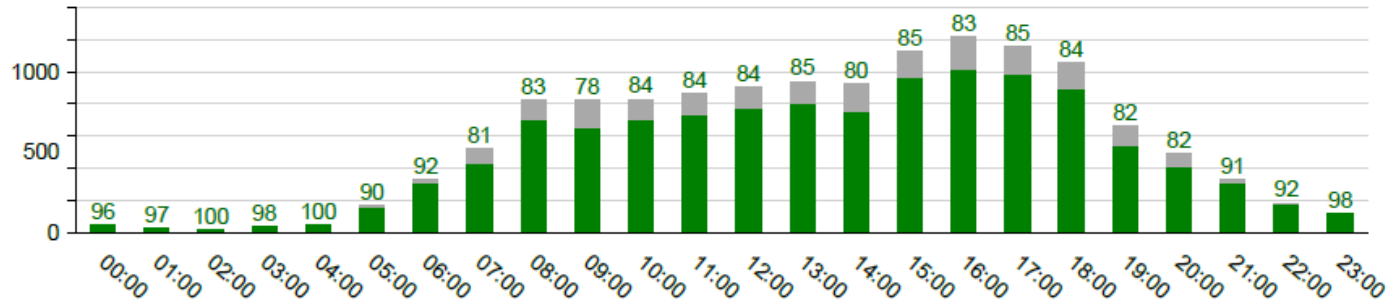


Phase 8

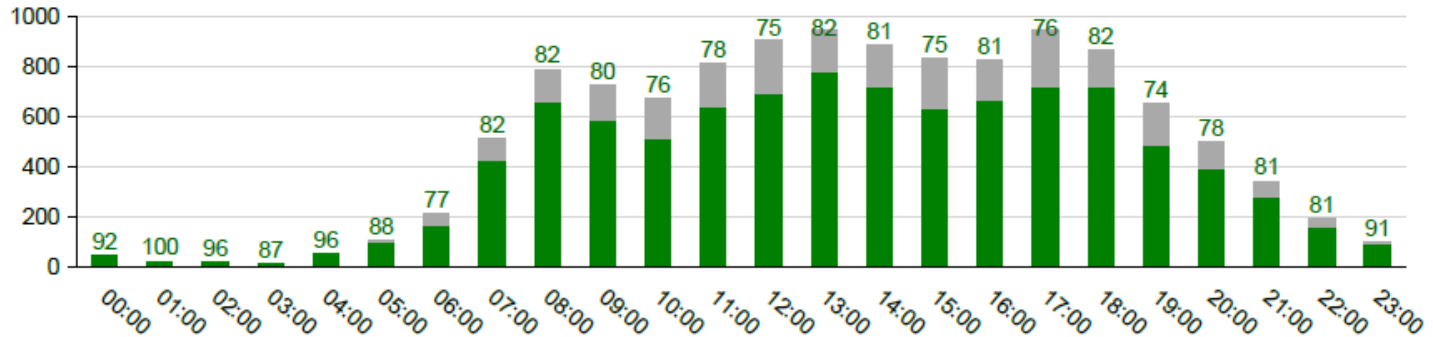


Multi-modal Traffic Count – Arrivals on Green

Phase 4



Phase 8



Bicycle Pedestrian Commission

Multi-Modal Traffic Counting

End Slide



CUPERTINO

October 19, 2022

Bicycle Pedestrian Commission
Agenda Item #6
October 19, 2022

Bicycle Pedestrian Commission



CUPERTINO

October 19, 2022

Bicycle Pedestrian Commission

Bicycle Facilities



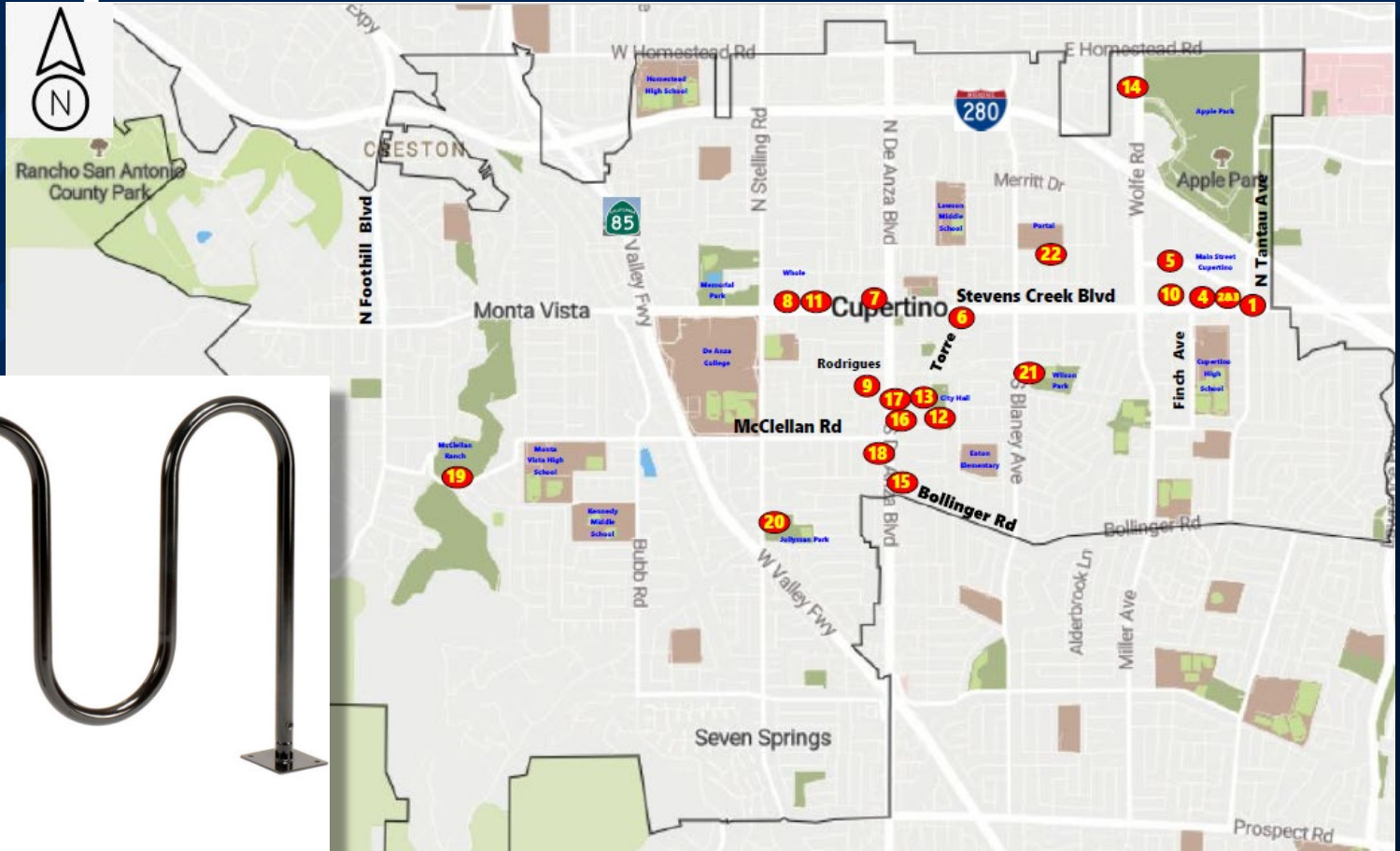
CUPERTINO

October 19, 2022

Bicycle Facilities

- Workplan Item FY22-23
- BPC Discussion 8-17-22
- Recommendation:
 - Return to BPC with list of recommended locations for bicycle facilities
 - Review building codes and planning requirements related to new developments

Bicycle Facilities – Proposed Locations



Bicycle Facilities – Proposed Locations

- 1) NW corner of Stevens Creek Blvd and Tantau Ave
- 2) E. of Stevens Creek Blvd and Lazy Dog driveway
- 3) W. corner of Stevens Creek Blvd and Lazy Dog driveway
- 4) NE corner of Stevens Creek Blvd and Main St
- 5) 300' E. of Wolfe Rd/Vallco Parkway (EB)
- 6) SE corner of Stevens Creek Blvd and Torre Ave
- 7) NW corner of Stevens Creek Blvd and De Anza Blvd
- 8) W. of Stevens Creek Blvd and Whole Foods driveway
- 9) SW corner of De Anza Blvd and Rodrigues Ave
- 10) In front of Target at Stevens Creek Blvd/Main St
- 11) E. of Stevens Creek Blvd and Whole Foods driveway

Bicycle Facilities – Proposed Locations

- 12) Cupertino Library Park (Requires concrete pad)
- 13) Town Center Ln
- 14) NW corner of Wolfe Rd and Apple Parkway
- 15) NE corner of De Anza Blvd and Bollinger Rd, near the bus stop
- 16) NE corner of De Anza Blvd and Civic Park Ln
- 17) SE corner of De Anza Blvd and Town Center Ln
- 18) SW corner of De Anza Blvd and McClellan Rd. (north of bus stop)
- 19) McClellan Ranch Parking Lot
- 20) Jollyman Park
- 21) Wilson Park
- 22) Portal Park

Bicycle Pedestrian Commission

Bicycle Facilities

End Slide



CUPERTINO

October 19, 2022

VTA BPAC Report

Reporting on selected items

For the Oct 12, 2022 VTA BPAC meeting

Erik Lindskog

**Criteria for the 2016 Measure B Bicycle & Pedestrian
Planning Studies Competitive Grant Program**

Criteria for the 2016 Measure B Bicycle & Pedestrian Planning Studies

Criterion	Max Points
1. Community Engagement	20
2. Gap closure	20
3. Connections to Schools, Transit, Employment Centers, or Key Community Destinations	20
4. Safety	20
5. Targets Communities of Concern Equity Considerations	15
6. Non-2016 Measure B Contribution	5
Tiebreaker: Geographic Distribution	-
TOTAL	100

Moved 5 points from the 'Equity Considerations' criteria to the 'Geographic Distribution' tiebreaker and make it a criteria.

Guaranteed Ride Home Pilot Program - Proposal

Guaranteed Ride Home Pilot Program - Proposal

Guaranteed Ride Home Process

10.a



Step 1

Register for GRH via website/mail



Step 2

Participant has an emergency



Medical



Family



Overtime



Vanpool/Shuttle
breaks down



Step 3

Participant pays for ride and obtains receipt



Step 4

Participant submits ride receipt,
receives reimbursement in 30 – 45 days



Adult Bicycle Education

Adult Bicycle Education

- VTA and SVBC will be developing bicycle education videos as part of the Adult Bicycle Education Program
- SVBC will write the scripts
- VTA will film, edit, and publish
- VTA staff is looking for your help on what videos would be helpful for your communities