

Bicycle Pedestrian Commission  
July 20, 2022  
Agenda Item #4

# Cupertino's 2022 Fall Bike Fest

Bicycle Pedestrian Commission

July 20, 2021



**CUPERTINO**

# Topics

- **Logistics**
- **Activities**
- **BPC Feedback**
- **Assign Roles**

## Logistics

- **Where:** City Hall Parking Lot/Torre Ave
- **When:** Saturday, September 24
- **Time:** 9am – 1pm (setup @ 7:45am)
- **FYI:** Conflict - Rotary Fall Fest

# Activities

- Helmet Checks
- Bike Checks
- Bike Rodeo
- BikeRide(s)
- Blender Bike Smoothies
- Bike Decorating

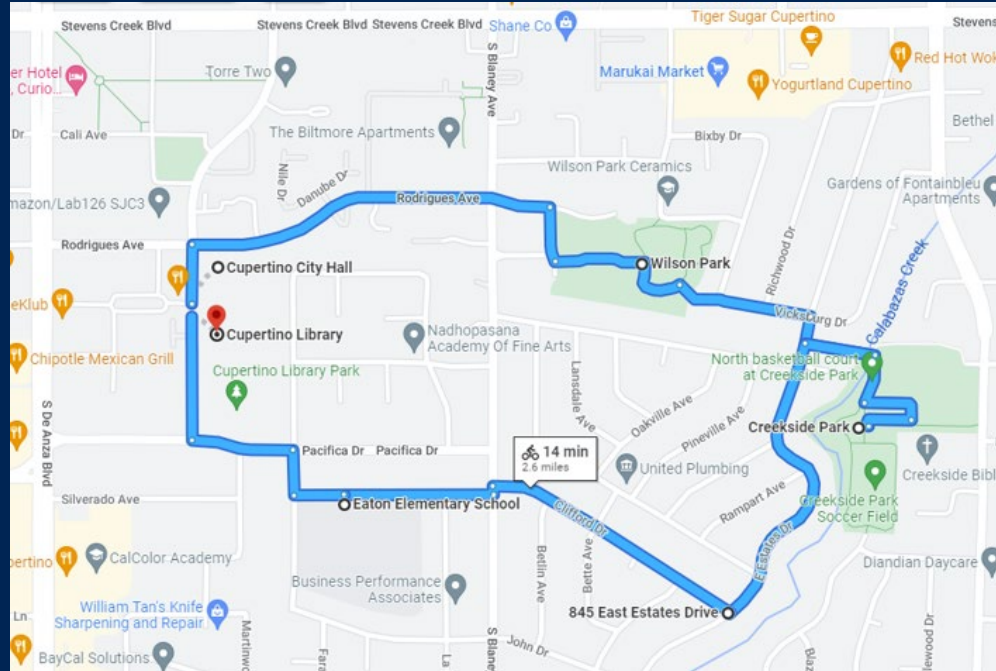
## More Activities

- Contests
- Demos (tentative)
- Poet Laureate
- Youth Environmental Power Initiative
- Vendor Booths

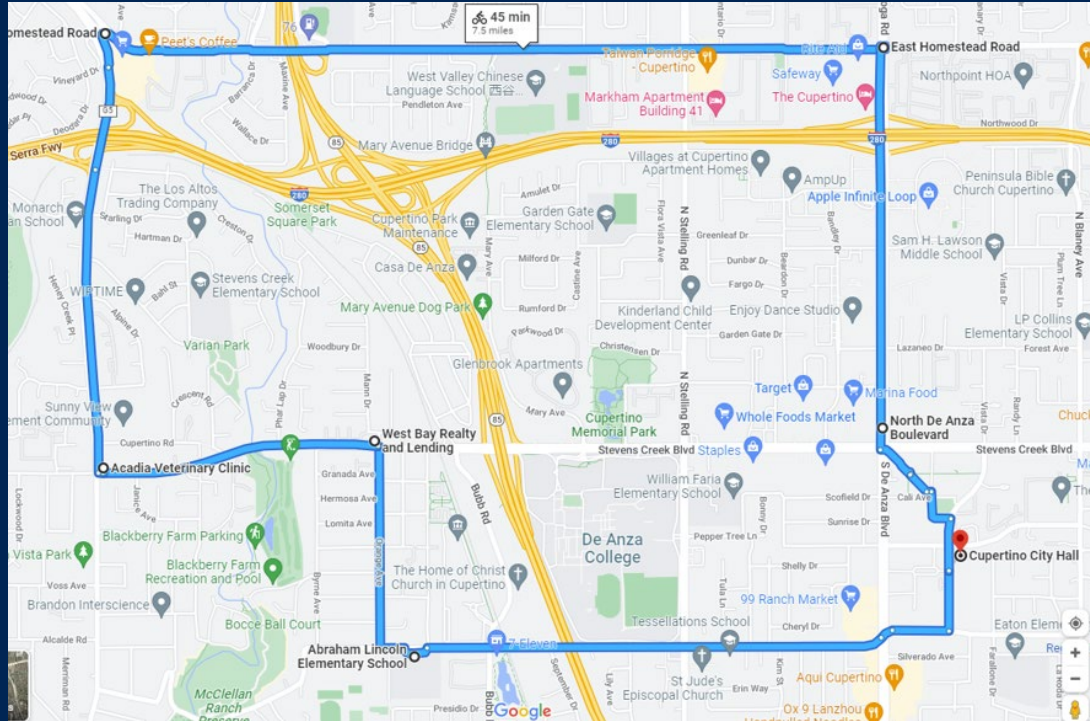
## Two Bike Rides

- Short ride for younger riders
  - ~3 miles, flat
  - Park stops for activities
- Longer ride for adults
  - ~10 miles, some hill
  - Showcase infrastructure projects and/or highlighting Rotary Fall Fest

# Proposed Short Ride Route



# Proposed Long Ride Route





# Feedback

- Number of Rides This Year
- Route Input
- Request for Contest or Activity?

# Assign Roles

- Registration Table Lead
- Bike Blender Lead
- Safety Talker (tentative)
- Ride Chaperones
- Route Creation/Collaboration



# Thank you!!

Cherie Walkowiak

Safe Routes to School Coordinator

[cheriew@cupertino.org](mailto:cheriew@cupertino.org)

[www.cupertino.org/bikefest](http://www.cupertino.org/bikefest)

# Bicycle and Pedestrian Commission I-280 Trail-East Segment

July 20, 2022



**CUPERTINO**

# Overview



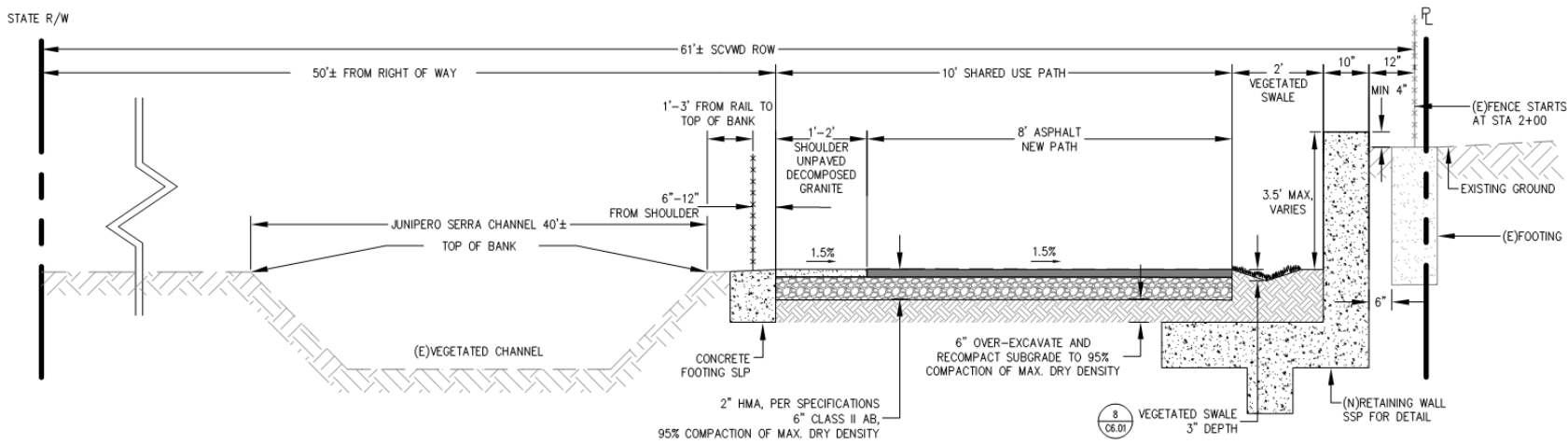
SITE MAP  
NO SCALE

- Background
- Cross-Sections
- Vallco Trailhead
- Promontory Trailhead
- Trailhead Details
- Upcoming

# Background

- **Grant Requirements:** A construction funds memo was submitted to VTA. Cupertino was awarded the total amount requested (1.9M). The agreement has been executed.
- **65% Design:** Under review from City staff and other public agencies
- **Environmental Permitting:**
  - Environmental Review Committee public hearing was on June 16, 2022.
  - IS/MND is under public review until August 1st.
  - Environmental permit applications are in progress.
- **Commission Action:** Staff is providing an update and seeking feedback on design elements

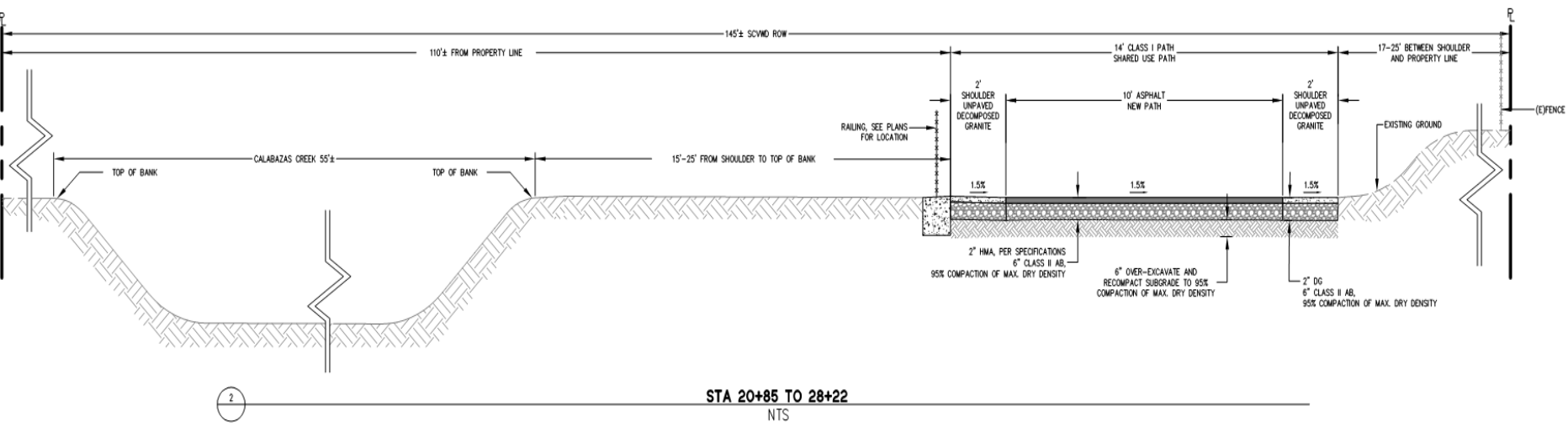
# Cross Section- Junipero Serra Channel



1

STA 1+25 TO 20+85  
NTS

# Cross Section- Calabazas Creek

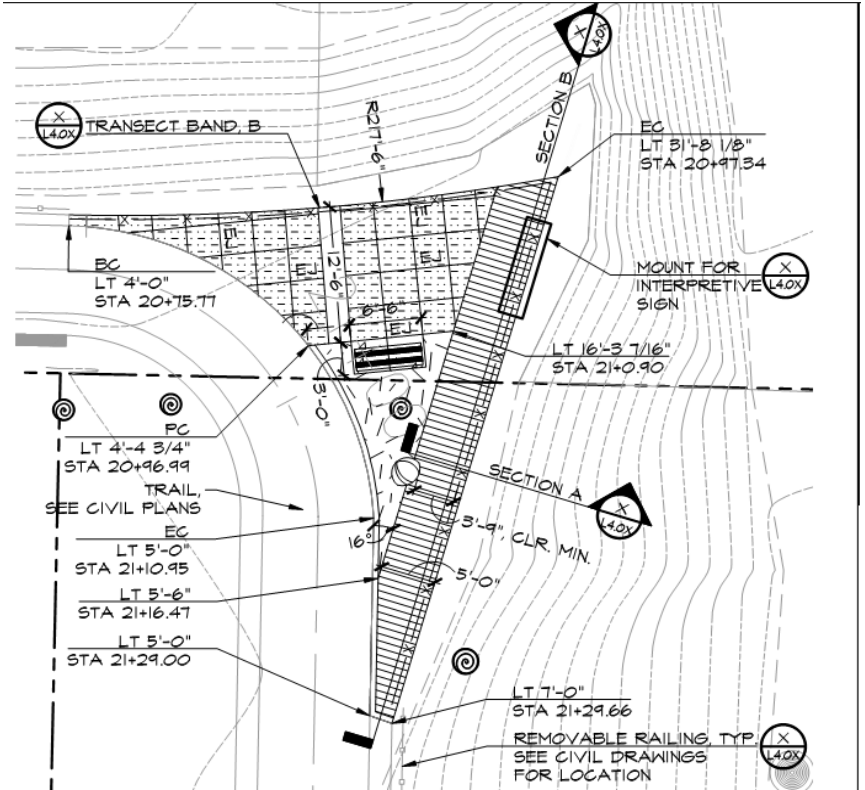
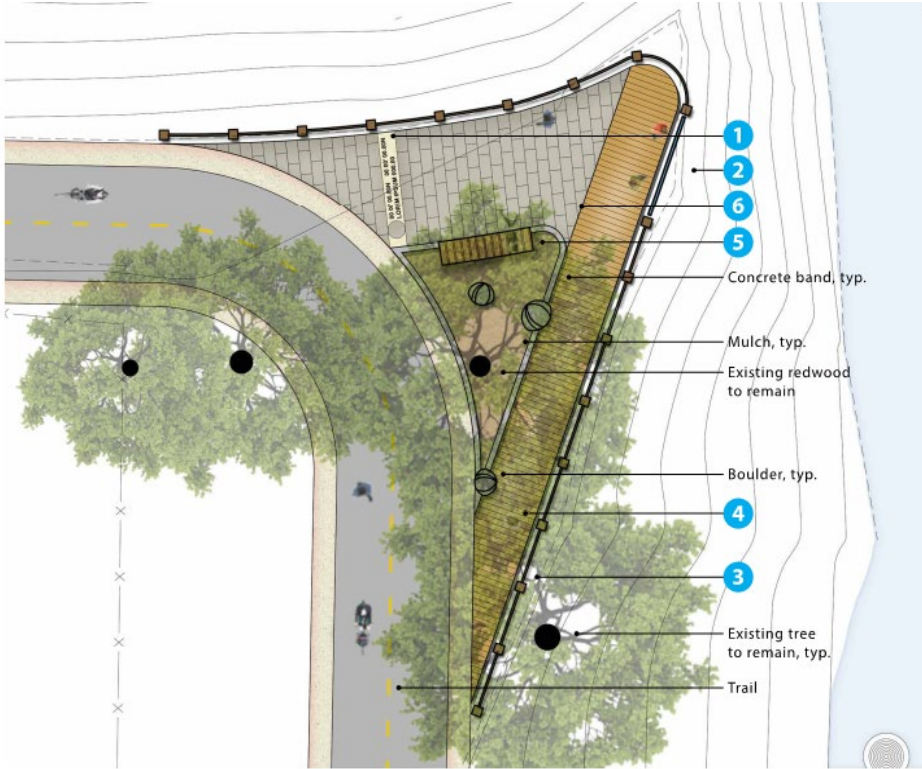




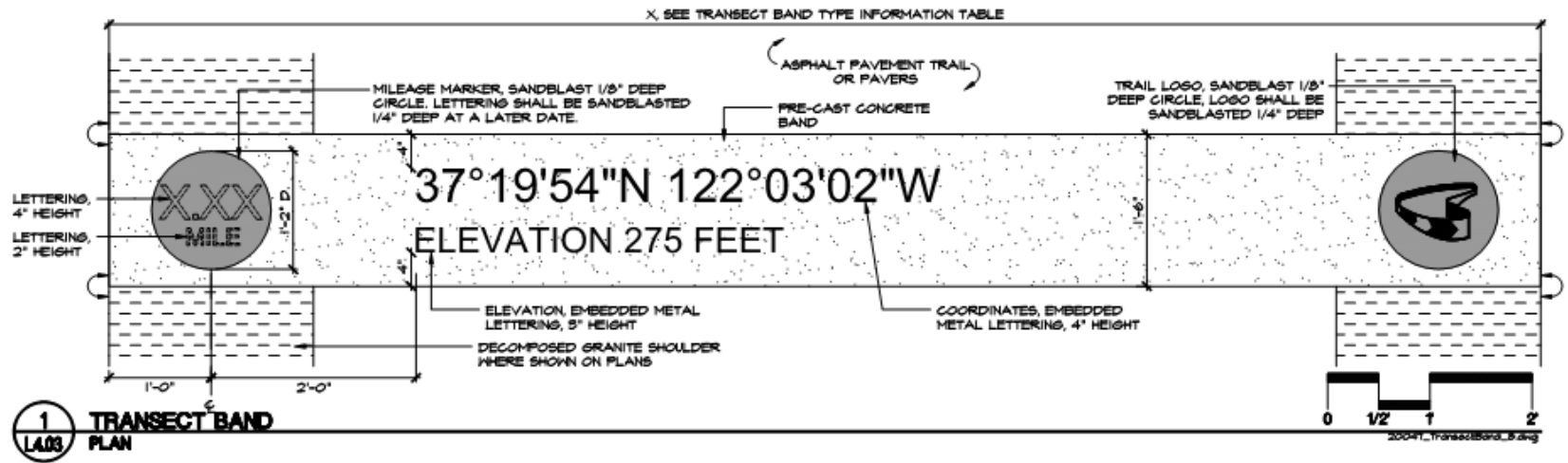
# Vallco Parkway Trailhead



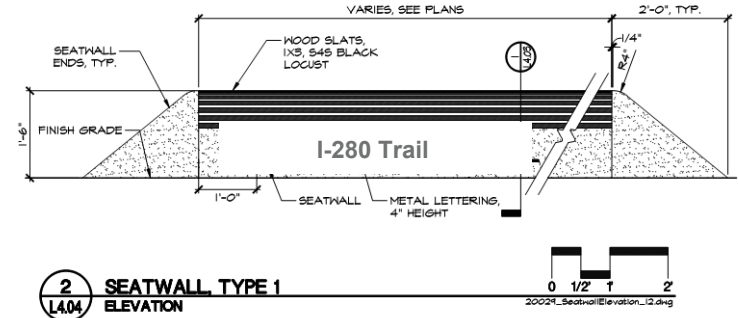
# Promontory Trailhead



# Trailhead Detail-Transsect Band



# Trailhead Detail-Seat Wall



# Upcoming

## **East Design:**

Fall '22 Design team refines design, prepare construction documents, and advertise bid for construction

## **East Construction:**

Early '23 Earliest construction start date

Winter '23 East trail opens

## **Central Design:**

Early '23 Design team refines design

## **Central Construction:**

Fall '24 Earliest Construction Start Date

Fall '25 Central trail opens

**Thank You**



**CUPERTINO**

# Stevens Creek Boulevard Separated Bikeway – Phase 2

Wolfe Rd – Hwy 85

95% Design - DRAFT



# Project Background

- 2016 Bicycle Transportation Plan
  - Tier 1 - Top priority
  - Class IV Protected Bikeway on Stevens Creek Blvd from Foothill Blvd to Tantau Ave
- Phase 1 construction completed in March 2021
  - Tantau Ave to Wolfe Rd
- Phase 2 design began April 2021



# Project Background (cont.)

- Phase 2 continues WB on Stevens Creek Blvd from Wolfe Rd to Highway 85
  - Phase 2A – Wolfe Rd to De Anza Blvd
  - Phase 2B – De Anza Blvd to Highway 85
- *Phase 3 finishes bikeway from Highway 85 to Foothill Blvd*
  - *TBD*

## **Commission action**

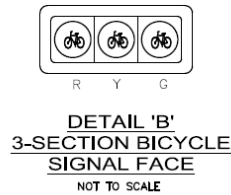
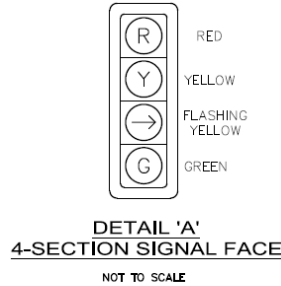
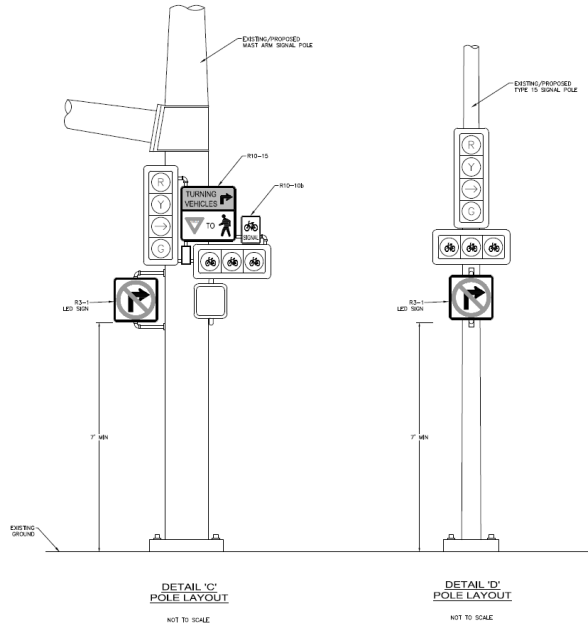
- Receive updates on 95% Design Elements

# Phase 2 Improvements

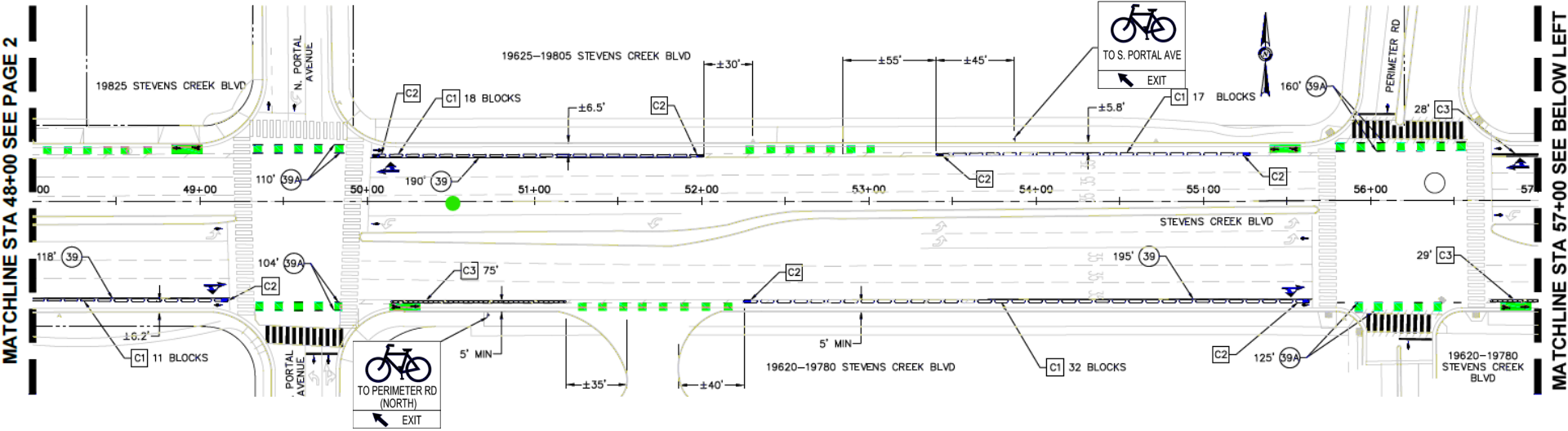


- Pre-cast concrete vertical curbs separating vehicle travel lanes and bike lanes along both sides of street
- In-line floating bus stops
- Traffic signal modifications at five (5) intersections:
  - Wolfe Rd
  - De Anza Blvd
  - Bandley Dr
  - Stelling Rd
  - Mary Ave
- Revised Signage / Striping
- Removal of crosswalk obstructions

# Phase 2 Improvements (cont.)



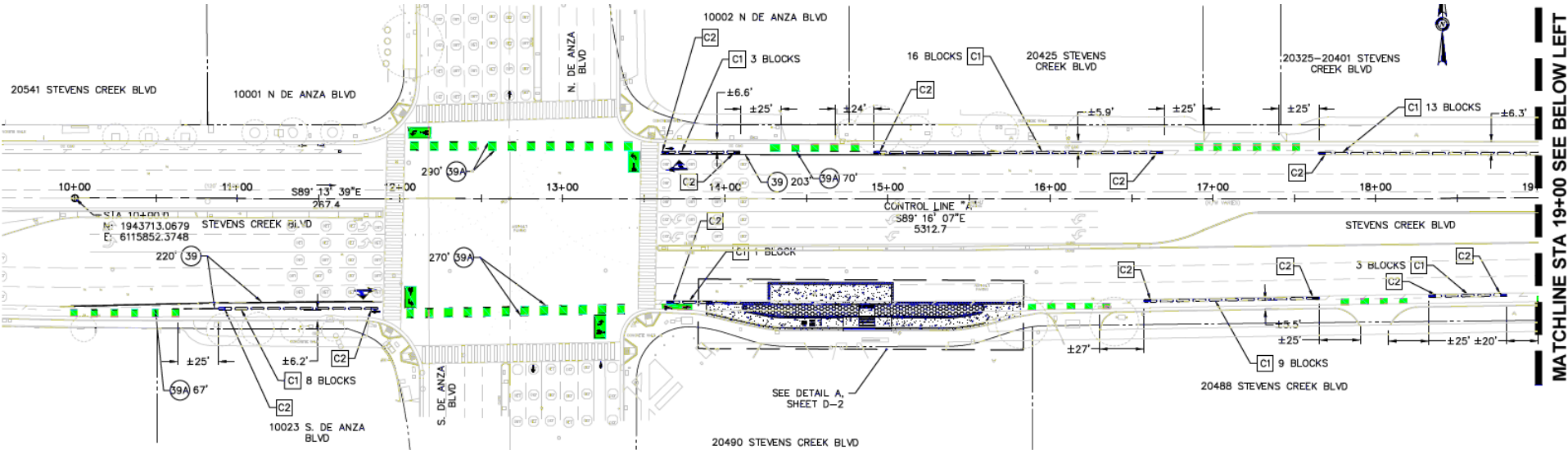
# SCB Class IV Bikeway (Typical Street Layout)



MATCHLINE STA 48+00 SEE PAGE 2

MATCHLINE STA 57+00 SEE BELOW LEFT

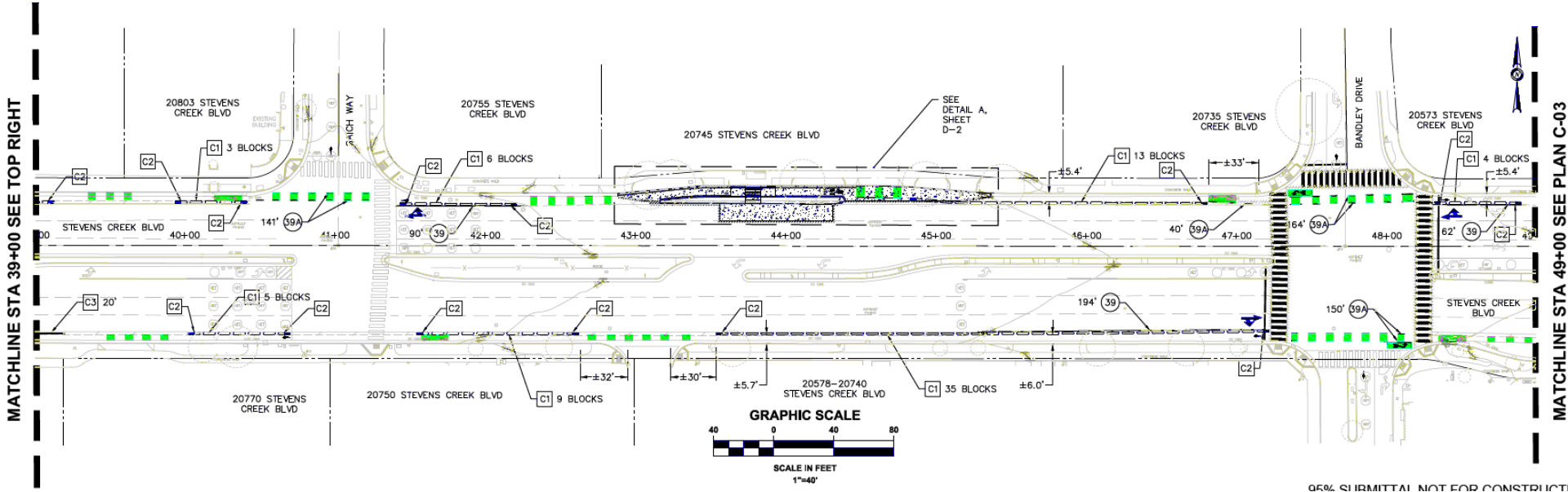
# SCB Class IV Bikeway De Anza Blvd



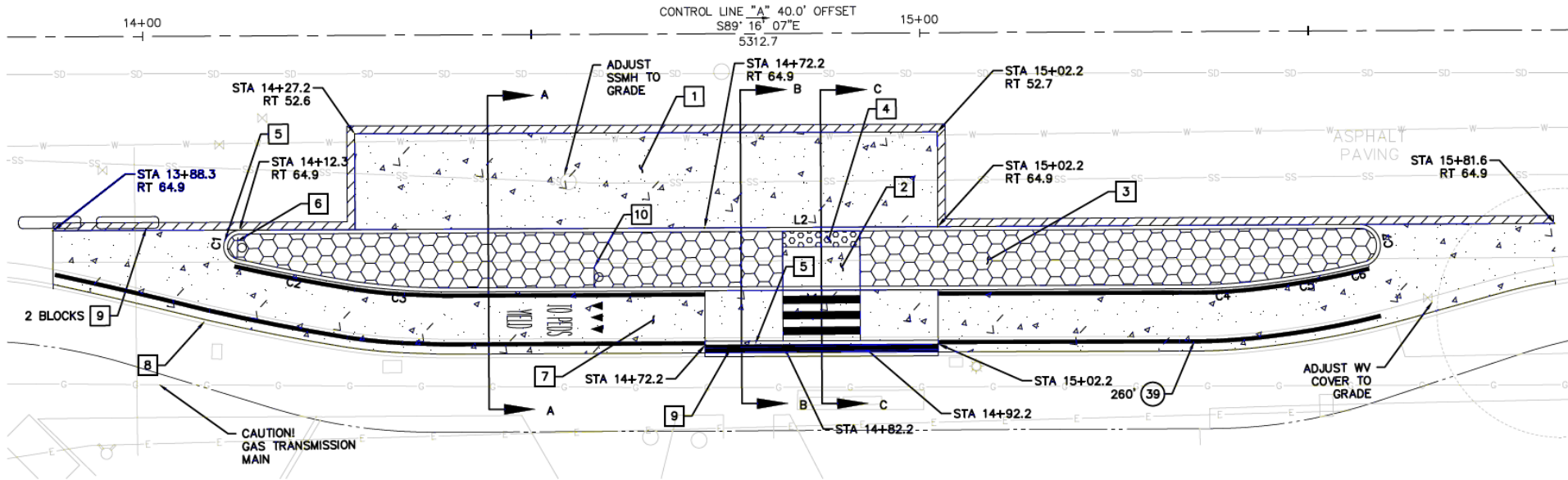
MATCHLINE STA 19+00 SEE BELOW LEFT

# SCB Class IV Bikeway

## Bandley Dr – Saich Way



# SCB Class IV Bikeway In-Line Floating Bus Stop



**(A) IN-LINE BUS STOP/BIKE PATH DETAIL**

1" = 10'